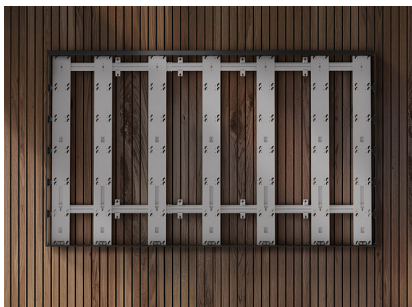
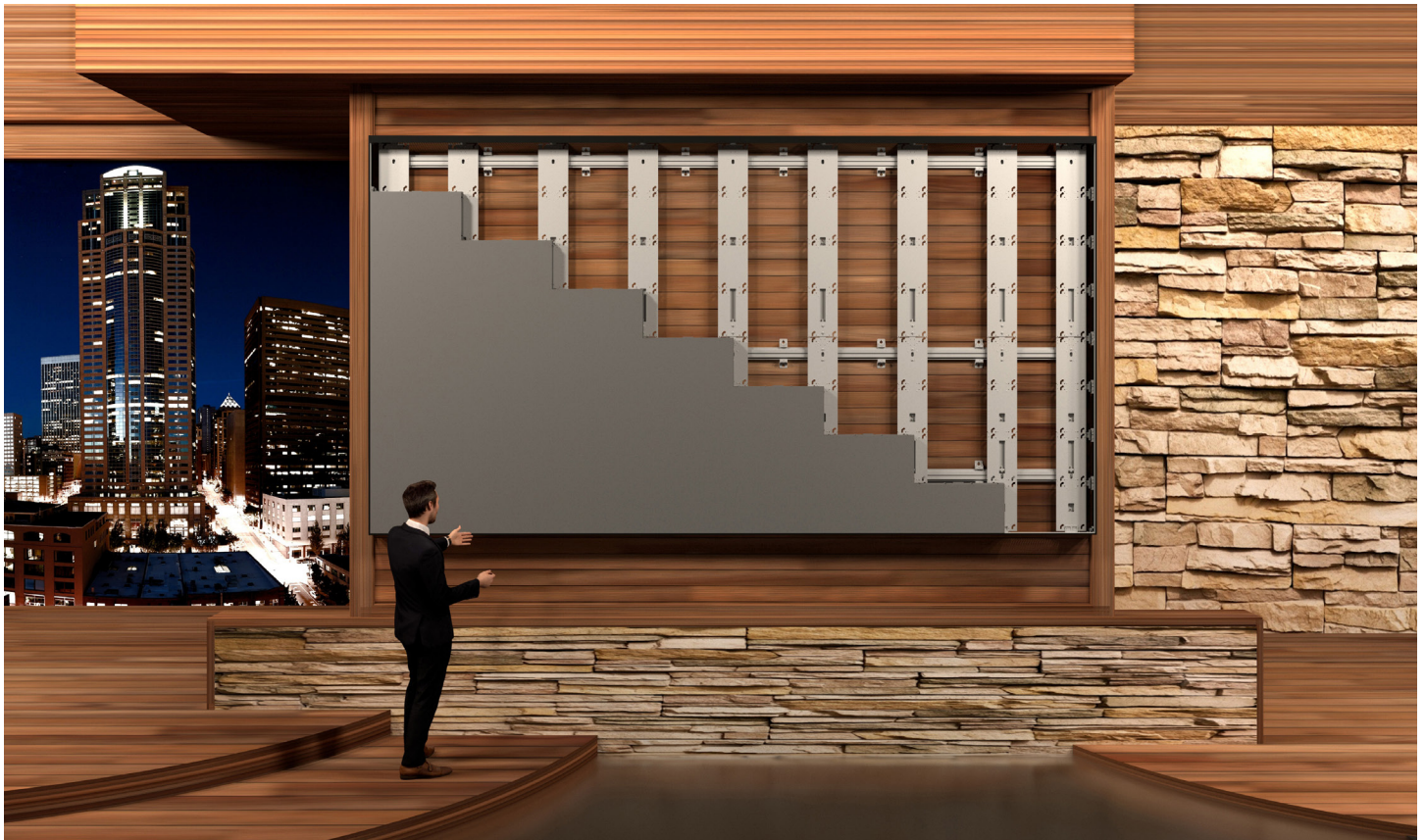


FOUNDATION[®]

ORIGIN MOUNTS

*The bedrock of hassle-free LED video wall installations:
Foundation Origin Mount for LG dvLED Video Walls*



Build Your LED Video Wall on Draper[®] Foundation[®] Origin Mounts

Foundation Origin Mount for LG LSCB and LG LSBB Series offers an economical and configurable wall mount that incorporates features specifically designed to benefit installers. Built-in precision simplifies installation challenges that arise to provide a speedy install.

Save time, gain precision

The alignment fixture tools (included) ensure critical components are positioned perfectly for a flawless installation of LED panels and help eliminate the need for realignment. Keyhole attachments and high precision Y and Z axis adjustments provide quick and precise LED video wall installation even on non-flat wall surfaces.

**FOCUSED ON
INNOVATIVE
SOLUTIONS**

- Modular design allows for any array size; no cutting or trimming on site.
- Standard array sizes range from 4x4 to 12x12, and 15x5.
- Available with textured black powder coated trim or without trim
- **Seismic rating:** Draper is able to provide seismic rated mounting solutions when specified in advance.



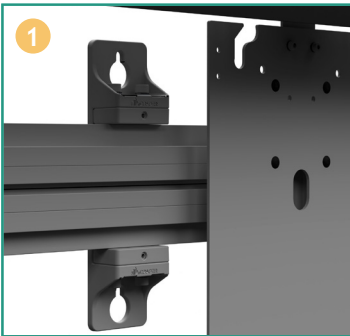
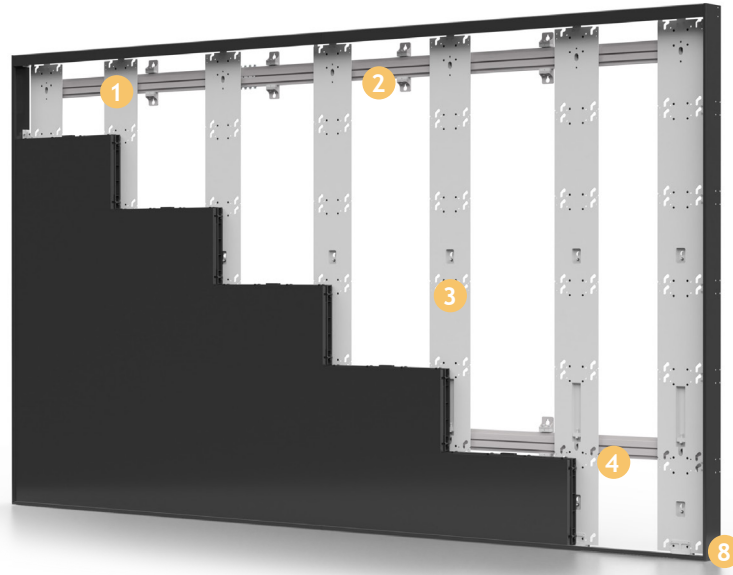
www.draperinc.com/contactus/avinquiry.aspx

Please contact your sales team if seismic rating is required for your project.

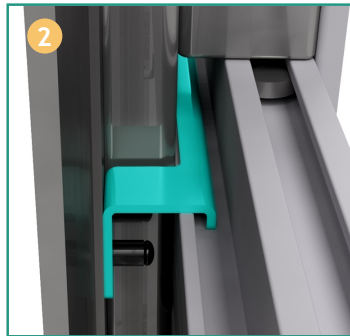
FOUNDATION[®]

ORIGIN MOUNTS

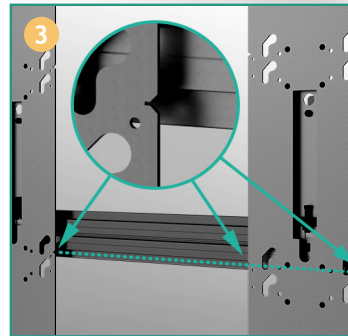
Engineered to provide increased precision and time savings when installing LED video walls.



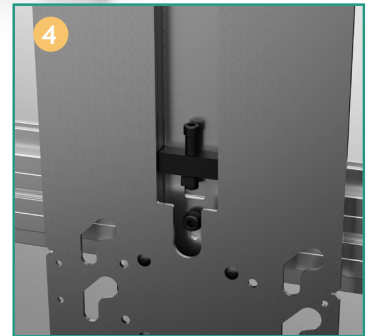
Keyhole attachments on wall brackets provide the ability to mount an entire horizontal rail at once.



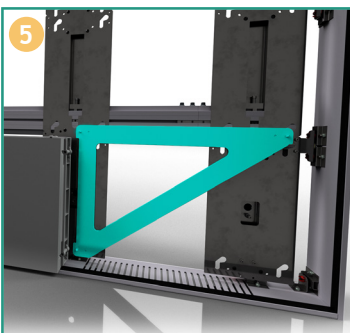
Vertical rail hanger clips allow installers to easily mount vertical rails.



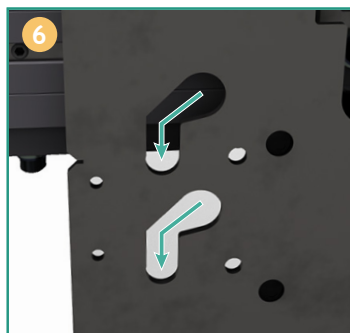
Laser level notches on the sides of each upright act as "string lines" for easy leveling.



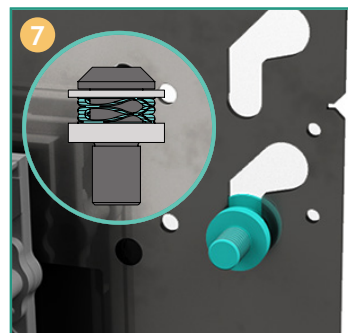
Vertical rail adjusters quickly align and level the bottom row of cabinets.



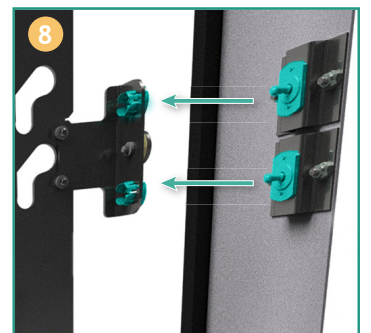
Install fixtures ensure that vertical uprights are positioned and spaced perfectly. Realignment is not necessary when LED panels are installed.



LED panel mounting slots minimize the amount of contact between LED modules during installation.



Spring loaded mounting studs push cabinets into the final Z-axis position.



Magnetic trim is attached using alignment pins and held in place with powerful rare-earth magnets, making installation or removal quick and easy.

