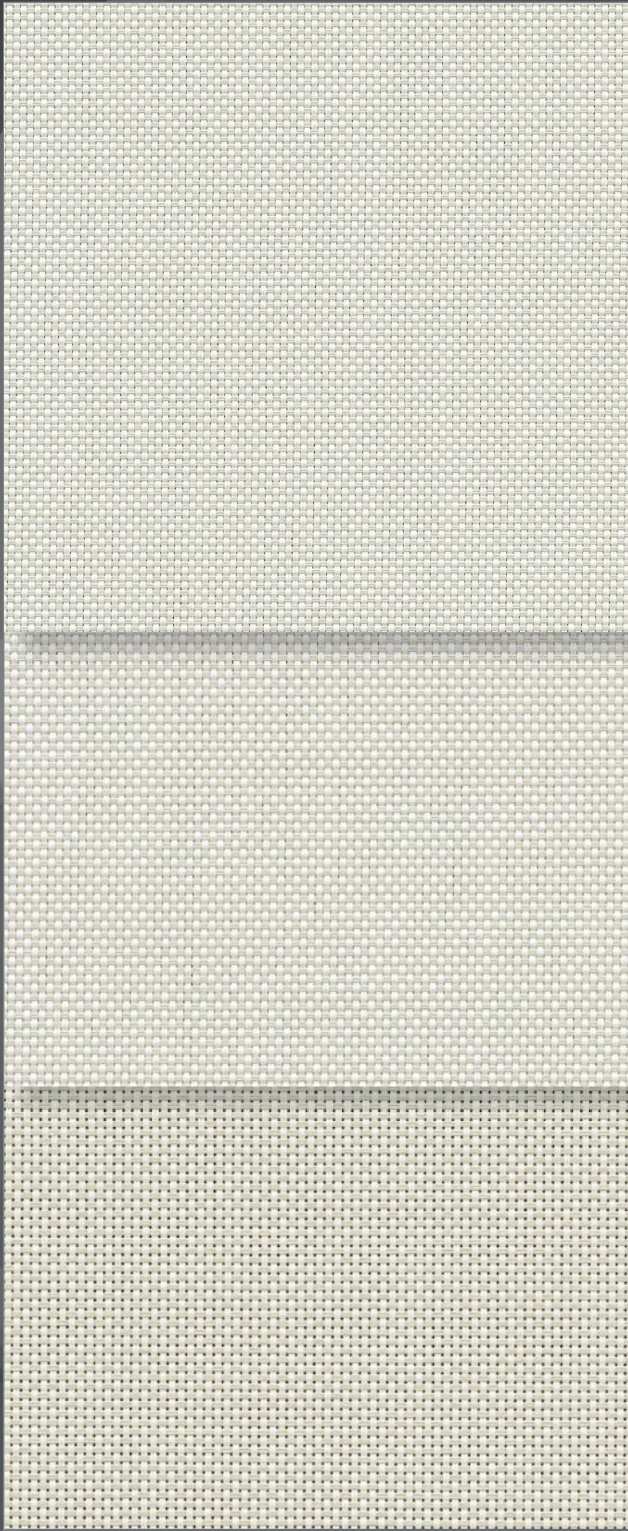


SheerWeave® BASIC

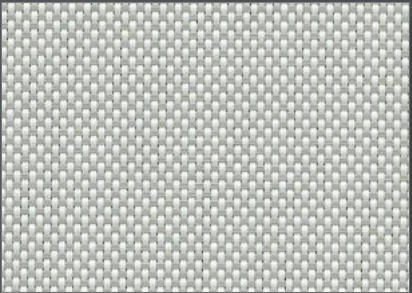
1%, 3%, & 5% Openness



1%
P04 White/Bone



3% P02 White



3% P05 White/Platinum

3%
P04 White/Bone



3% V22 Charcoal/Grey

5%
P04 White/Bone



3% V21 Charcoal

The above openness styles are also available in the colors at right.

Digital sample of actual colors may vary slightly.



SheerWeave® BASIC 1%, 3%, & 5% Openness

SheerWeave BASIC is the latest in innovative sun control fabric development. With all the benefits, certifications, and technical specifications you have come to expect from SheerWeave, but uniquely designed for the demanding and competitive commercial market, SheerWeave BASIC is an ideal choice for your spec-driven projects. A more robust fiberglass core yarn gives SheerWeave BASIC the added durability high traffic areas and public spaces require. Suitable for all types of interior window shade applications, SheerWeave BASIC is an economical alternative to traditional solar screen fabrics, and is also suitable for exterior roller shades.

SHEERWEAVE STYLE BASIC

STANDARD WIDTH	1% / 3% / 5%: 126" (320 cm)	FABRIC THICKNESS	1%: 0.026 in (0.66 mm) 3%: 0.025 in (0.64 mm) 5%: 0.022 in (0.56 mm)
ROLL LENGTH	1% / 3% / 5%: 30 Linear Yards (27.4 lm)	OPENNESS FACTOR	1%: Approximately 1% 3%: Approximately 3% 5%: Approximately 5%
COMPOSITION	1% / 3% / 5%: 38% Fiberglass, 62% Vinyl on Fiberglass	UV BLOCKAGE	1%: Approximately 99% 3%: Approximately 97% 5%: Approximately 95%
MESH WEIGHT	1%: 17.2 oz/yd ² (583 g/m ²) 3%: 16.4 oz/yd ² (556 g/m ²) 5%: 14.1 oz/yd ² (478 g/m ²)	ACOUSTICAL VALUE	1%: NRC 0.55 / SAA 0.53 3%: NRC 0.60 / SAA 0.60 5%: NRC 0.10 / SAA 0.08
		ACOUSTICAL PERFORMANCE	NRC (Noise Reduction Coefficient) and SAA (Sound Absorption Average) tested in accordance with ASTM C423-09a.

SPECIFICATIONS

FIRE CLASSIFICATION	California U.S. Title 19 (small scale), NFPA 701 TM#1 (small scale), NFPA 101 (Class A Rating), IBC Section 803.1.1 (Class A Rating), BS 5867 Part 2 Type B Performance, CAN/ULC-S 109 (large and small scale), NFPA 701 TM#2 (large scale), CAN/CGSB2-4.162-M80.
BACTERIA AND FUNGAL RESISTANCE	ASTM E 2180, ASTM G21, ASTM G22, AATCC30 Part 3, ASTM D 3273, GREENGUARD Mold and Bacteria Standard ASTM 6329; includes Microban antimicrobial additives.
ENVIRONMENTAL CERTIFICATION	Certified to GREENGUARD and GREENGUARD Gold standards for low chemical emissions into indoor air during product usage.
SAFE USE	RoHS Compliant, US Consumer Product Safety Commission Section 101, ANSI/WCMA A 100.1-2007 for lead content and REACH Compliant.
STANDARD USES	Roller shades and panel tracks.
UV PROTECTION	SheerWeave sun control fabrics are an effective way to reduce harmful UV rays. Phifer Incorporated is a proud member of the Skin Cancer Foundation's Corporate Council.
WARRANTY	10-year interior, 5-year exterior.

TECHNICAL DATA

		SOLAR OPTICAL PROPERTIES												SHGC/G VALUE g-tot (glass & blind)						
		TS%			RS%			AS%			TV%			Single 1/4 CL			Insulating 1HA			
OPENNESS	NUMBER	1%	3%	5%	1%	3%	5%	1%	3%	5%	1%	3%	5%	1%	3%	5%	1%	3%	5%	
COLOR																				
White	P02	15	15	19	71	64	68	14	21	13	15	16	17	0.26	0.29	0.29	0.21	0.22	0.22	
White / Bone	P04	12	12	16	64	58	60	24	30	24	10	11	14	0.29	0.32	0.32	0.22	0.23	0.23	
White / Platinum	P05	9	8	11	55	50	53	36	42	36	8	8	11	0.34	0.36	0.36	0.24	0.25	0.25	
Charcoal	V21	1	1	6	4	4	4	95	95	90	1	2	6	0.60	0.60	0.61	0.37	0.37	0.37	
Charcoal / Grey	V22	2	1	7	9	8	9	89	91	84	2	2	7	0.57	0.57	0.58	0.36	0.36	0.36	



PRODUCT CERTIFIED FOR LOW CHEMICAL EMISSIONS
UL.COM/GG
UL 2818



Microban® antimicrobial protection inhibits the growth of stain-causing bacteria, mold and mildew on the shade.



*TS - Solar Transmittance, RS - Solar Reflectance, AS - Solar Absorbance, TV - Visual Transmittance *SHGC = Solar Heat Gain Coefficient *1/4 CL = 1/4" Clear Glass, 1 HA = 1" Heat Absorbing Glass *Fabrics Installed Internally, Zero-Degree Profile Angle *Solar Heat Gain Coefficient (SHGC) shown calculated according to Office of Building Technology, State and Community Programs, Energy Efficiency and Renewable Energy, U.S. Department of Energy's definition of SHGC. SHGC represents the percentage of solar heat gain that is transmitted to the interior through the glass and shading system. If you are using glass whose performance is listed in terms of SC, you may convert to SHGC by multiplying the SC by 0.87.



411 S. Pearl Street | Spiceland, IN 47385
765.987.7999 | 800.238.7999

draperinc.com

For additional information, questions, or to request fabric samples, please contact your Draper sales representative or scan to visit request.draperinc.com



© SheerWeave is a registered trademark of PHIFER INCORPORATED.
© MICROBAN is a registered trademark of Microban Products Company.
TM UL, the UL logos and the UL mark are trademarks of UL LLC.
© PHIFER INCORPORATED 3028204 0224