

SheerWeave® Style SW7500

Room Darkening Fabric



7500 R13
Ice



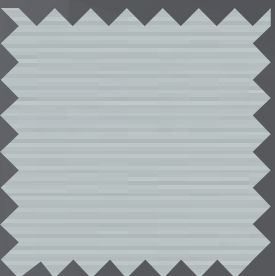
7500 R39
Cloud



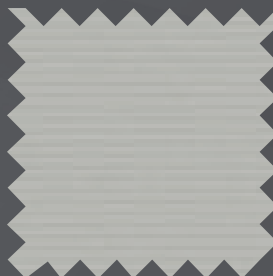
7500 R40
Porcelain



7500 R41
Limestone



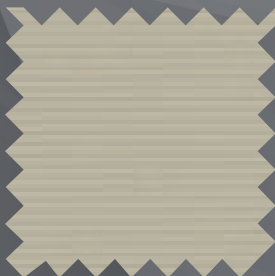
7500 R97
Mist



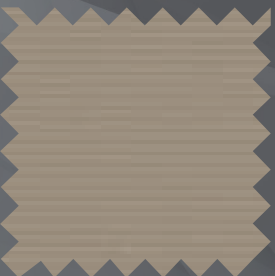
7500 R42
Nimbus



7500 R43
Tundra



7500 R17
Dune



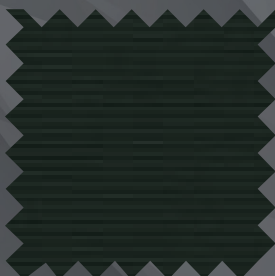
7500 R19
Stone



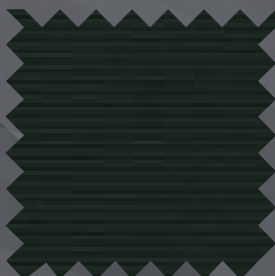
7500 R20
Odyssey



7500 R21
Orient



7500 R22
Midnight



7500 R99
Midnight x2



7500 S97
Orient x2

Digital sample of actual colors may vary slightly.



SheerWeave® Style SW7500 Room Darkening Fabric

This attractive opaque fabric maintains high quality at an economical price. Style 7500 is presented in a classic range of neutral colors with a unique PVC-free composition that is ideal for commercial applications. SheerWeave Style 7500 is an excellent option when total room darkening is needed.

SHEERWEAVE STYLE 7500

STANDARD WIDTH	118" (300cm)	FABRIC THICKNESS	0.016 in (0.40 mm)
ROLL LENGTH	30 Linear Yards (27.4 lm)	OPENNESS FACTOR	Room Darkening/Opaque
COMPOSITION	100% Polyester with Acrylic Coating	ACOUSTICAL VALUE	NRC 0.00 / SAA 0.03
MESH WEIGHT	12.14 oz/yd ² (412 g/m ²)	ACOUSTICAL PERFORMANCE	NRC (Noise Reduction Coefficient) and SAA (Sound Absorption Average) tested in accordance with ASTM C423-09a.

SPECIFICATIONS

FIRE CLASSIFICATION	NFPA 701 TM#1 (small scale), NFPA 101 (Class A Rating), California U.S. Title 19 (small scale), BS 5867 Part 2 Type B Performance, CAN/ULC-S 109 (large and small scale), CAN/CGSB2-4.162-M80, IBC Section 803.1.1 (Class A Rating). Fire classifications are subject to change. Please visit phifer.com for the most current information.
BACTERIA AND FUNGAL RESISTANCE	ASTM E 2180 and ASTM G21
ENVIRONMENTAL CERTIFICATION	Certified to GREENGUARD and GREENGUARD Gold standards for low chemical emissions into indoor air during product usage.
SAFE USE	RoHS Compliant, US Consumer Product Safety Commission Section 101 and ANSI/WCMA A 100.1-2007 for lead content. REACH Compliant.
STANDARD USES	Roller shades & panel tracks.
UV PROTECTION	SheerWeave sun control fabrics are an effective way to reduce harmful UV rays. Phifer Incorporated is a proud member of the Skin Cancer Foundation's Corporate Council.
WARRANTY	5-year interior.
CLEANING INSTRUCTIONS	Fabric should be regularly dusted/vacuumed as appropriate. If commercial spot cleaners are used, they must first be tested and allowed to dry on an inconspicuous area to ensure compatibility.

STYLE 7500

CODE / COLOR	COLOR	SOLAR OPTICAL PROPERTIES				SHGC/G VALUE	
						g-tot (glass & blind) Single	Insulating
Room-side	Street-side	TS%	RS%	AS%	TV%	1/4 CL	1 HA
R13 Ice	Off-white	0	68	32	0	0.24	0.20
R39 Cloud	Off-white	0	68	32	0	0.24	0.20
R40 Porcelain	Off-white	0	68	32	0	0.24	0.20
R41 Limestone	Off-white	0	68	32	0	0.24	0.20
R97 Mist	Off-white	0	68	32	0	0.24	0.20
R42 Nimbus	Off-white	0	68	32	0	0.24	0.20
R43 Tundra	Off-white	0	68	32	0	0.24	0.20
R17 Dune	Off-white	0	68	32	0	0.24	0.20
R19 Stone	Off-white	0	68	32	0	0.24	0.20
R20 Odyssey	Off-white	0	68	32	0	0.24	0.20
R21 Orient	Off-white	0	68	32	0	0.24	0.20
R22 Midnight	Off-white	0	68	32	0	0.24	0.20
R99 Midnight x2	Midnight	4	9	87	0	0.57	0.36
S97 Orient x2	Orient	4	13	83	0	0.56	0.35



PRODUCT CERTIFIED FOR LOW CHEMICAL EMISSIONS
UL.COM/GG
UL 2818



*TS - Solar Transmittance, RS - Solar Reflectance, AS - Solar Absorptance, TV - Visual Transmittance *SHGC = Solar Heat Gain Coefficient *1/4 CL = 1/4" Clear Glass, 1 HA = 1" Heat Absorbing Glass *Fabrics Installed Internally, Zero-Degree Profile Angle *Solar Heat Gain Coefficient (SHGC) shown calculated according to Office of Building Technology, State and Community Programs, Energy Efficiency and Renewable Energy, U.S. Department of Energy's definition of SHGC. SHGC represents the percentage of solar heat gain that is transmitted to the interior through the glass and shading system. If you are using glass whose performance is listed in terms of SC, you may convert to SHGC by multiplying the SC by 0.87.



411 S. Pearl Street | Spiceland, IN 47385
765.987.7999 | 800.238.7999

draperinc.com

For additional information, questions, or to request fabric samples, please contact your Draper sales representative or scan to visit request.draperinc.com



PHIFER
INCORPORATED

® SheerWeave is a registered trademark of PHIFER INCORPORATED.
® MICROBAN is a registered trademark of Microban Products Company.
TM UL, the UL logos and the UL mark are trademarks of UL LLC.
© PHIFER INCORPORATED 3028204 0225