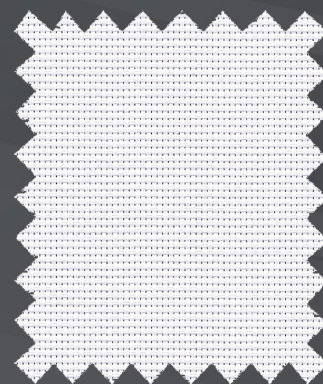


SheerWeave® Style SW7100

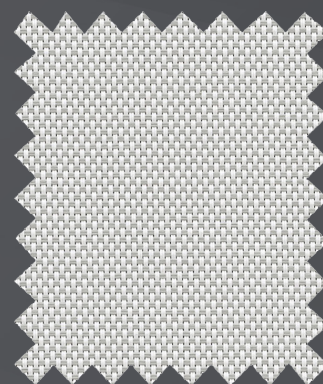
Room Darkening Fabric



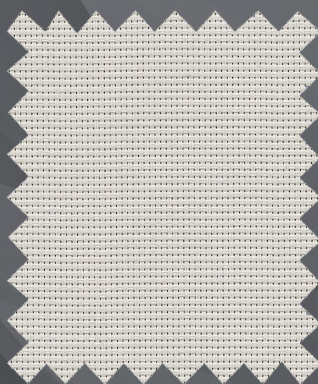
P13 Oyster / Beige



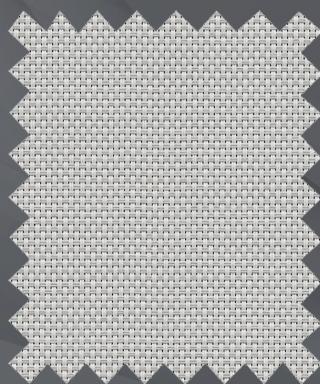
P12 Oyster



P14 Oyster / Pearl Grey



Q20 Beige



Q21 Beige / Pearl Grey



V21 Charcoal

Digital sample of actual colors may vary slightly.



SheerWeave® Style SW7100 Room Darkening Fabric

Style 7100 is a durable laminated room darkening fabric that combines the woven texture of Style 2390 as the face fabric with a durable vinyl backing to achieve light blockage. Style 7100 coordinates easily with other SheerWeave fabrics when multi-purpose shades are needed. All Style 7100 colors have a white backing.

SHEERWEAVE STYLE SW7100

STANDARD WIDTH	63" and 96" (160 cm and 243.8 cm)	FABRIC THICKNESS	0.023 in (0.58 mm)
ROLL LENGTH	30 Linear Yards (27.4 lm)	OPENNESS FACTOR	Opaque
COMPOSITION	37% Fiberglass, 63% Vinyl on Fiberglass Laminated with a two-ply 100% PVC blackout film	ACOUSTICAL VALUE	NRC 0.05 / SAA 0.03
MESH WEIGHT	19.4 oz/yd ² (658 g/m ²)	ACOUSTICAL PERFORMANCE	NRC (Noise Reduction Coefficient) and SAA (Sound Absorption Average) tested in accordance with ASTM C423-09a.

SPECIFICATIONS

FIRE CLASSIFICATION	California U.S. Title 19 (small scale), NFPA 701 TM#1 (small scale), NFPA 701 TM#2 (large scale), NFPA 101 (Class A Rating), California Technical Bulletin 117, IBC Section 803.1.1 (Class A Rating), BS 5867 Part 2 Type B Performance, CAN/ULC-S 109 (large and small scale). Fire classifications are subject to change. Please visit phifer.com for the most current information.
BACTERIA AND FUNGAL RESISTANCE	ASTM E 2180, ASTM G21, AATCC30 Part 3, ASTM D 3273, GREENGUARD Mold and Bacteria Standard ASTM 6329; Style 2000 face includes Microban antimicrobial additives.
ENVIRONMENTAL CERTIFICATION	Certified to GREENGUARD and GREENGUARD Gold standards for low chemical emissions into indoor air during product usage.
SAFE USE	RoHS Compliant, US Consumer Product Safety Commission Section 101, ANSI/WCMA A 100.1-2007 for lead content and REACH Compliant.
STANDARD USES	Roller shades and panel tracks.
UV PROTECTION	SheerWeave sun control fabrics are an effective way to reduce harmful UV rays. Phifer Incorporated is a proud member of the Skin Cancer Foundation's Corporate Council.
WARRANTY	10-year interior.

TECHNICAL DATA

		SOLAR OPTICAL PROPERTIES		SHGC/G VALUE g-tot (glass & blind)	
		RS%	AS%	Single 1/4 CL	Insulating 1HA
COLOR	NUMBER				
Oyster	P12	71	29	0.23	0.19
Oyster / Beige	P13	71	29	0.23	0.19
Oyster / Pearl Grey	P14	71	29	0.23	0.19
Beige	Q20	71	29	0.23	0.19
Beige / Pearl Grey	Q21	71	29	0.23	0.19
Charcoal	V21	71	29	0.23	0.19



PRODUCT CERTIFIED FOR LOW CHEMICAL EMISSIONS
UL COM/CG
UL 2818



*TS - Solar Transmittance, RS - Solar Reflectance, AS - Solar Absorptance, TV - Visual Transmittance *SHGC = Solar Heat Gain Coefficient *1/4 CL = 1/4" Clear Glass, 1 HA = 1" Heat Absorbing Glass *Fabrics Installed Internally, Zero-Degree Profile Angle *Solar Heat Gain Coefficient (SHGC) shown calculated according to Office of Building Technology, State and Community Programs, Energy Efficiency and Renewable Energy, U.S. Department of Energy's definition of SHGC. SHGC represents the percentage of solar heat gain that is transmitted to the interior through the glass and shading system. If you are using glass whose performance is listed in terms of SC, you may convert to SHGC by multiplying the SC by 0.87.



411 S. Pearl Street | Spiceland, IN 47385
765.987.7999 | 800.238.7999

draperinc.com

For additional information, questions, or to request fabric samples, please contact your Draper sales representative or scan to visit request.draperinc.com



© SheerWeave is a registered trademark of PHIFER INCORPORATED.
© MICROBAN is a registered trademark of Microban Products Company.
TM UL, the UL logos and the UL mark are trademarks of UL LLC.
© PHIFER INCORPORATED 0225