

SheerWeave® Style SW2701 / 2703 / 2705 / 2710

1%, 3%, 5%, & 10%



Style SW2701

(1% open)

P12 Oyster



Style SW2703

(3% open)

P12 Oyster



SW2701 P13
Oyster/Beige

SW2701 P14
Oyster/Pearl Gray

SW2701 P28
Oyster/Charcoal

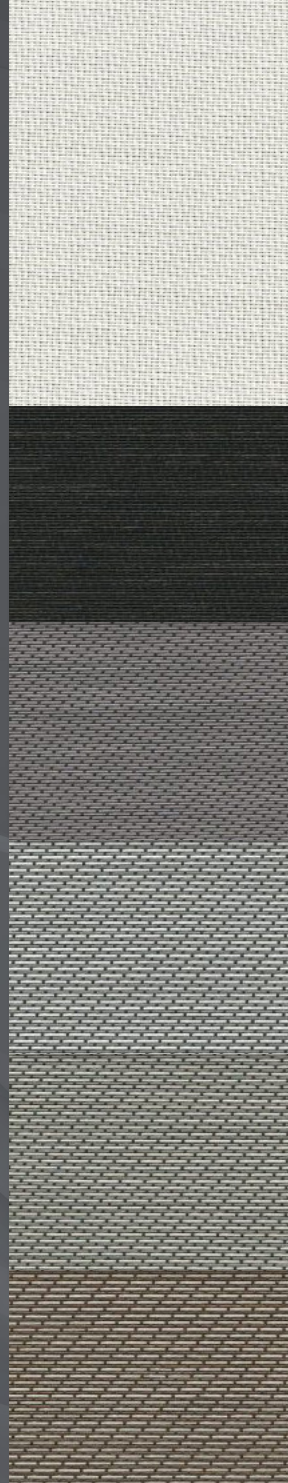
SW2701 P91
Oyster/Pewter

SW2701 P92
Oyster/Chestnut

Style SW2705

(5% open)

P12 Oyster



SW2705 V21
Charcoal

SW2705 V22
Charcoal/Gray

SW2705 V64
Charcoal/Slate

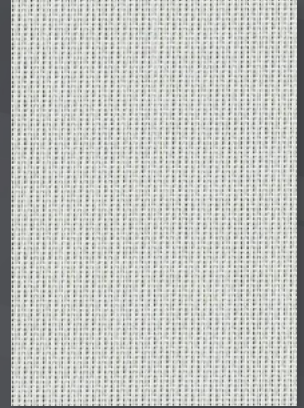
SW2705 V65
Charcoal/Taupe

SW2705 V66
Charcoal/Brown

Style SW2710

(10% open)

P12 Oyster



These fabrics have a Roomside and Streetside - lift each sample for the Streetside view.
Colors may appear different based on openness factor.

Digital sample of actual colors may vary slightly.



SheerWeave® Style SW2701 / 2703 / 2705 / 2710

Styles 2701, 2703, 2705, and 2710 are woven from a unique twill pattern that displaces the individual yarns to create a two-sided fabric for maximum performance in heat reduction, glare reduction and improved visibility. These styles can also be used in exterior shading systems.

SHEERWEAVE STYLE SW2701 / 2703 / 2705 / 2710

STANDARD WIDTH	2701, 2703 and 2705: 63", 98" and 126" (160 cm, 248.9 cm and 320 cm) 2710: 63" and 98" (160 cm and 248.9 cm)	FABRIC THICKNESS	2701: 0.027 in (0.66 mm) 2703: 0.028 in (0.71 mm)	2705: 0.025 in (0.64 mm) 2710: 0.023 in (0.58 mm)
ROLL LENGTH	30 Linear Yards (27.4 lm)	OPENNESS FACTOR	2701: Approximately 1% 2703: Approximately 3%	2705: Approximately 5% 2710: Approximately 10%
COMPOSITION	2701 and 2703: 36% Fiberglass, 64% Vinyl on Fiberglass 2705 and 2710: 34% Fiberglass, 66% Vinyl on Fiberglass	UV BLOCKAGE	2701: Approximately 99% 2703: Approximately 97%	2705: Approximately 95% 2710: Approximately 90%
MESH WEIGHT	2701: 14.6 oz/yd ² (495 g/m ²) 2705: 11.8 oz/yd ² (379 g/m ²) 2703: 14.0 oz/yd ² (475 g/m ²) 2710: 10.4 oz/yd ² (353 g/m ²)	ACOUSTICAL VALUE	2701: NRC 0.15 / SAA 0.15 2703: NRC 0.10 / SAA 0.09	2705: NRC 0.05 / SAA 0.06 2710: NRC 0.05 / SAA 0.05
		ACOUSTICAL PERFORMANCE	NRC (Noise Reduction Coefficient) and SAA (Sound Absorption Average) tested in accordance with ASTM C423-09a.	

SPECIFICATIONS

FIRE CLASSIFICATION	NFPA 701 TM#1 (small scale), NFPA 701 TM#2 (large scale), NFPA 101 (Class A Rating), California U.S. Title 19 (small scale), BS 5867 Part 2 Type B Performance, CAN/ULC-S 109 (large and small scale), CAN/CGSB2-4.162-M80, IBC Section 803.1.1 (Class A Rating). Fire classifications are subject to change. Please visit phifer.com for the most current information.
BACTERIA AND FUNGAL RESISTANCE	ASTM E 2180, ASTM G21, ASTM G22, AATCC30 Part 3, ASTM D 3273, GREENGUARD Mold and Bacteria Standard ASTM 6329; includes Microban antimicrobial additives.
ENVIRONMENTAL CERTIFICATION	Certified to GREENGUARD and GREENGUARD Gold standards for low chemical emissions into indoor air during product usage.
SAFE USE	RoHS Compliant, US Consumer Product Safety Commission Section 101, ANSI/WCMA A 100.1-2007 for lead content and REACH Compliant.
STANDARD USES	Roller shades and panel tracks.
UV PROTECTION	SheerWeave sun control fabrics are an effective way to reduce harmful UV rays. Phifer Incorporated is a proud member of the Skin Cancer Foundation's Corporate Council.
WARRANTY	10-year interior, 5-year exterior.

TECHNICAL DATA

SOLAR OPTICAL PROPERTIES (Roomside/Streetside)														SHGC/G VALUE G-TOT (GLASS & BLIND) (Roomside/Streetside)											
Code	Color	TS				RS				AS				TV				SINGLE 1/4 CL				INSULATING 1 HA			
		1%	3%	5%	10%	1%	3%	5%	10%	1%	3%	5%	10%	1%	3%	5%	10%	1%	3%	5%	10%	1%	3%	5%	10%
P12	Oyster	19/19	22/21	25/26	31/30	69/70	66/67	63/63	59/59	12/11	12/12	12/11	10/11	19/18	21/20	24/25	30/29	0.32/0.32	0.34/0.34	0.37/0.38	0.41/0.41	0.25/0.24	0.26/0.25	0.27/0.27	0.29/0.29
P13	Oyster/Beige	15/15	21/20	22/21	30/30	55/62	53/60	54/60	51/56	30/23	26/20	24/19	19/14	13/12	19/18	20/19	29/28	0.40/0.36	0.43/0.38	0.43/0.38	0.47/0.43	0.29/0.26	0.30/0.28	0.30/0.28	0.31/0.30
P14	Oyster/Pearl Gray	11/10	15/14	18/17	27/25	38/54	38/54	39/54	41/51	51/36	47/32	43/29	32/24	9/9	13/12	17/16	25/23	0.50/0.40	0.51/0.41	0.52/0.42	0.45/0.39	0.33/0.28	0.34/0.29	0.34/0.29	0.29/0.27
P28	Oyster/Charcoal	6/5	9/7	12/11	19/17	11/42	12/42	14/43	21/45	83/53	79/51	74/46	60/38	6/5	9/7	12/11	18/17	0.66/0.46	0.66/0.47	0.65/0.47	0.63/0.47	0.41/0.32	0.41/0.32	0.41/0.32	0.39/0.32
P91	Oyster/Pewter	6/6	10/9	15/13	22/21	22/48	22/47	24/47	28/47	72/46	68/44	61/40	50/32	5/5	10/9	14/13	21/20	0.59/0.43	0.60/0.44	0.60/0.45	0.59/0.47	0.38/0.30	0.38/0.31	0.38/0.31	0.37/0.32
P92	Oyster/Chestnut	7/6	12/11	11/10	22/21	16/45	19/45	19/46	25/45	77/49	69/44	70/44	53/34	5/5	11/9	10/9	20/19	0.63/0.44	0.62/0.46	0.62/0.45	0.61/0.48	0.39/0.31	0.39/0.31	0.39/0.31	0.38/0.32
V21	Charcoal	3/3	5/5	7/7	15/15	4/4	4/4	4/4	4/3	93/93	91/91	89/89	81/82	3/3	5/5	7/7	15/15	0.69/0.69	0.70/0.70	0.70/0.70	0.72/0.72	0.43/0.43	0.43/0.43	0.43/0.43	0.44/0.44
V22	Charcoal/Gray	3/3	5/5	8/8	15/15	14/6	13/6	6/12	10/5	83/91	82/89	86/80	75/80	3/3	5/5	8/8	14/14	0.63/0.68	0.64/0.68	0.69/0.65	0.68/0.71	0.40/0.42	0.40/0.42	0.43/0.41	0.42/0.43
V64	Charcoal/Slate	4/4	7/7	9/9	15/15	30/10	27/10	25/9	16/7	66/86	66/83	66/82	69/78	4/4	7/7	8/8	15/15	0.53/0.66	0.56/0.67	0.58/0.68	0.65/0.70	0.35/0.41	0.36/0.41	0.37/0.42	0.40/0.43
V65	Charcoal/Taupe	4/4	6/6	9/9	15/15	25/9	24/8	21/8	17/7	71/87	70/86	70/83	68/78	3/3	6/6	8/8	14/14	0.56/0.67	0.58/0.67	0.60/0.68	0.64/0.70	0.36/0.41	0.37/0.42	0.38/0.42	0.40/0.43
V66	Charcoal/Brown	4/4	6/6	9/9	14/14	17/7	17/7	16/7	12/6	79/89	77/87	75/84	74/80	4/4	6/6	8/8	14/14	0.62/0.68	0.62/0.68	0.64/0.69	0.67/0.71	0.39/0.42	0.39/0.42	0.40/0.42	0.41/0.43



*TS - Solar Transmittance, RS - Solar Reflectance, AS - Solar Absorption, TV - Visual Transmittance *SHGC = Solar Heat Gain Coefficient *1/4 CL = 1/4" Clear Glass, 1 HA = 1" Heat Absorbing Glass *Fabrics Installed Internally, Zero-Degree Profile Angle *Solar Heat Gain Coefficient (SHGC) shown calculated according to Office of Building Technology, State and Community Programs, Energy Efficiency and Renewable Energy, U.S. Department of Energy's definition of SHGC. SHGC represents the percentage of solar heat gain that is transmitted to the interior through the glass and shading system. If you are using glass whose performance is listed in terms of SC, you may convert to SHGC by multiplying the SC by 0.87.



411 S. Pearl Street | Spiceland, IN 47385
765.987.7999 | 800.238.7999

draperinc.com

For additional information, questions, or to request fabric samples, please contact your Draper sales representative or scan to visit request.draperinc.com



© SheerWeave is a registered trademark of PHIFER INCORPORATED.
© MICROBAN is a registered trademark of Microban Products Company.
TM UL, the UL logos and the UL mark are trademarks of UL LLC.
© PHIFER INCORPORATED 0324