

# SheerWeave® Style PW4901 / 4903

## 1% & 3% Openness

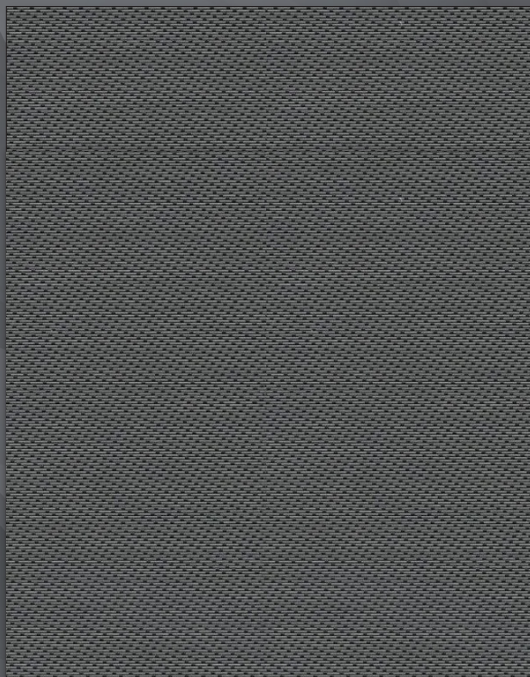


The unique twill weave creates two fabrics in one: distinct yet complimentary colors are exposed on the face and back.



1% Style PW4901

V28 Slate



3% Style PW4903

V28 Slate



**Reversible:**  
Room side is facing up.  
Flip to see street side.

P26 Chalk / Wheat

Q23 Whitesands

Q25 Birch

Q22 Flaxen

Q26 Cobblestone

V03 Pewter / Chalk

Q07 Kettal Grey

V28 Slate

P25 Chalk / Black

Q16 Tobacco

P06 Chalk

Q27 Soft Grey

V10 Ebony

Fabrics sampled on the waterfall are 3%. All colors are available in 1% and 3% openness.



# SheerWeave® Style PW4901 / 4903 1% & 3%

Form follows function in this unique combination of color and weave. Using thin and light weight vinyl-coated polyester yarns, Styles 4901 and 4903 are as versatile as they are beautiful. Styles 4901 and 4903 can also be used in exterior shading systems.

## SHEERWEAVE STYLE PW4901 / 4903

STANDARD WIDTH	63" and 98" (160 cm and 248.9 cm)	FABRIC THICKNESS	<b>4901 1%:</b> 0.028 in (0.71 mm)	<b>4903 3%:</b> 0.027 in (0.69 mm)
ROLL LENGTH	30 Linear Yards (27.4 lm)	OPENNESS FACTOR	<b>4901 1%:</b> Approximately 1%	<b>4903 3%:</b> Approximately 3%
COMPOSITION	17% Polyester / 83% Vinyl on Polyester	UV BLOCKAGE	<b>4901 1%:</b> Approximately 99%	<b>4903 3%:</b> Approximately 97%
MESH WEIGHT	<b>4901 1%:</b> 15.85 oz/yd <sup>2</sup> (573 g/m <sup>2</sup> )	ACOUSTICAL VALUE	<b>4901 1%:</b> NRC 0.60 / SAA 0.59	
	<b>4903 3%:</b> 14.9 oz/yd <sup>2</sup> (505.20 g/m <sup>2</sup> )		<b>4903 3%:</b> NRC 0.25 / SAA 0.25	
		ACOUSTICAL PERFORMANCE	NRC (Noise Reduction Coefficient) and SAA (Sound Absorption Average) tested in accordance with ASTM C423-09a.	

## SPECIFICATIONS

FIRE CLASSIFICATION	California U.S. Title 19 (small scale), NFPA 701 TM#1 (small scale), NFPA 101 (Class A Rating), IBC Section 803.1.1 (Class A Rating), BS 5867 Part 2 Type B Performance, NFPA 701 TM#2 (large scale), CAN/ ULC-S 109 (large and small scale), CAN/CGSB2-4. 162-M80. Fire classifications are subject to change. Please visit phifer.com for the most current information.
BACTERIA AND FUNGAL RESISTANCE	ASTM E 2180, ASTM G21, ASTM G22, AATCC30 Part 3, ASTM D 3273, GREENGUARD Mold and Bacteria Standard ASTM 6329; includes Microban antimicrobial additives.
ENVIRONMENTAL CERTIFICATION	Certified to GREENGUARD and GREENGUARD Gold standards for low chemical emissions into indoor air during product usage.
SAFE USE	RoHS compliant, US Consumer Product Safety Commission Section 101, ANSI/WCMA A 100.1-2007 for lead content and REACH compliant.
STANDARD USES	Roller shades and panel tracks.
UV PROTECTION	SheerWeave sun control fabrics are an effective way to reduce harmful UV rays. Phifer Incorporated is a proud member of the Skin Cancer Foundation's Corporate Council.
WARRANTY	10-year interior, 5-year exterior.

## TECHNICAL DATA

		SOLAR OPTICAL PROPERTIES								SHGC/G VALUE g-tot (glass & blind)			
		TS%		RS%		AS%		TV%		Single 1/4 CL		Insulating 1HA	
OPENNESS		1%	3%	1%	3%	1%	3%	1%	3%	1%		3%	
COLOR	NUMBER	Rm/St*	Rm/St*	Rm/St*	Rm/St*	Rm/St*	Rm/St*	Rm/St*	Rm/St*	Rm/St*	Rm/St*	Rm/St*	Rm/St*
Chalk	P06	9/9	11/11	83/83	81/81	8/8	8/8	7/7	10/10	0.18/0.18	0.17/0.17	0.19/0.19	0.17/0.17
Chalk / Black	P25	1/1	3/3	22/54	25/56	77/45	72/41	1/1	3/3	0.50/0.33	0.32/0.24	0.49/0.32	0.32/0.23
Chalk / Wheat	P26	6/6	9/9	65/75	65/73	29/19	26/18	6/6	9/9	0.28/0.22	0.22/0.19	0.28/0.23	0.22/0.19
Kettal / Grey	Q07	3/3	4/4	48/37	47/37	49/60	49/59	3/3	5/5	0.37/0.43	0.26/0.29	0.37/0.43	0.26/0.29
Tobacco	Q16	2/2	3/3	8/6	8/6	90/92	89/91	2/2	4/4	0.58/0.59	0.36/0.37	0.58/0.59	0.37/0.37
Flaxen	Q22	3/3	6/6	42/57	43/57	55/40	51/37	3/3	7/7	0.40/0.31	0.27/0.23	0.40/0.32	0.27/0.23
Whitesands	Q23	7/7	9/9	65/67	63/67	28/26	28/24	6/6	8/8	0.28/0.27	0.22/0.21	0.30/0.27	0.23/0.21
Birch	Q25	5/5	7/7	57/64	56/63	38/31	37/30	4/4	7/7	0.32/0.28	0.23/0.22	0.25/0.29	0.24/0.22
Cobblestone	Q26	3/3	4/4	36/55	38/56	61/42	58/40	4/4	4/4	0.43/0.33	0.29/0.24	0.43/0.32	0.29/0.23
Soft Grey	Q27	5/5	8/8	58/58	57/57	37/37	35/35	4/4	8/8	0.31/0.31	0.23/0.23	0.32/0.32	0.23/0.23
Pewter / Chalk	V03	3/3	4/4	56/30	53/29	41/67	43/67	4/4	5/5	0.32/0.46	0.23/0.30	0.34/0.47	0.24/0.30
Ebony	V10	1/1	3/3	5/5	5/5	94/94	92/92	1/1	5/5	0.59/0.59	0.36/0.36	0.60/0.60	0.37/0.37
Slate	V28	2/2	3/3	11/8	12/8	87/90	85/89	3/3	4/4	0.57/0.58	0.36/0.36	0.55/0.58	0.35/0.37

\*Rm/St = Room side / Street side



PRODUCT CERTIFIED FOR LOW CHEMICAL EMISSIONS  
UL.COM/GG  
UL 2818



\*TS - Solar Transmittance, RS - Solar Reflectance, AS - Solar Absorptance, TV - Visual Transmittance \*SHGC = Solar Heat Gain Coefficient \*1/4 CL = 1/4" Clear Glass, 1 HA = 1" Heat Absorbing Glass \*Fabrics Installed Internally, Zero-Degree Profile Angle \*Solar Heat Gain Coefficient (SHGC) shown calculated according to Office of Building Technology, State and Community Programs, Energy Efficiency and Renewable Energy, U.S. Department of Energy's definition of SHGC. SHGC represents the percentage of solar heat gain that is transmitted to the interior through the glass and shading system. If you are using glass whose performance is listed in terms of SC, you may convert to SHGC by multiplying the SC by 0.87.



411 S. Pearl Street | Spiceland, IN 47385  
765.987.7999 | 800.238.7999

draperinc.com

For additional information, questions, or to request fabric samples, please contact your Draper sales representative or scan to visit [request.draperinc.com](http://request.draperinc.com)



© SheerWeave is a registered trademark of PHIFER INCORPORATED.  
© MICROBAN is a registered trademark of Microban Products Company.  
TM UL, the UL logos and the UL mark are trademarks of UL LLC.  
© PHIFER INCORPORATED 0324