

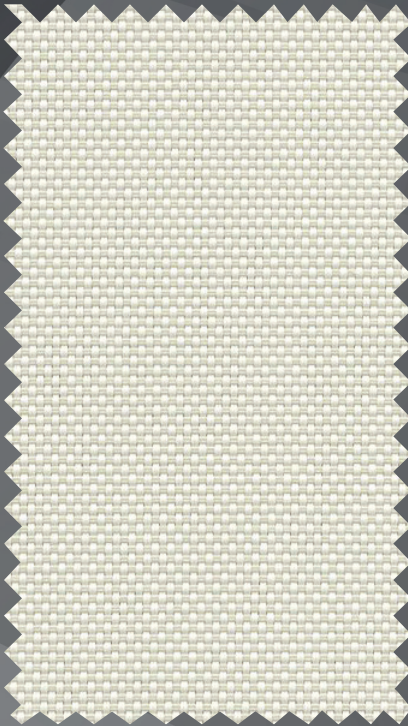
SheerWeave® Infinity® 2

1%, 3%, & 5%

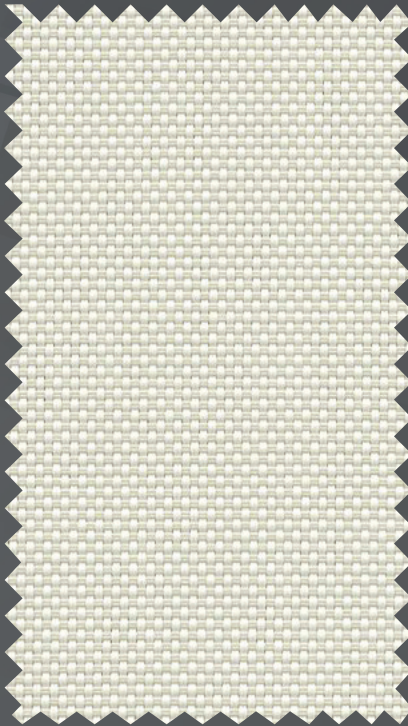
I N F I N I T Y 2



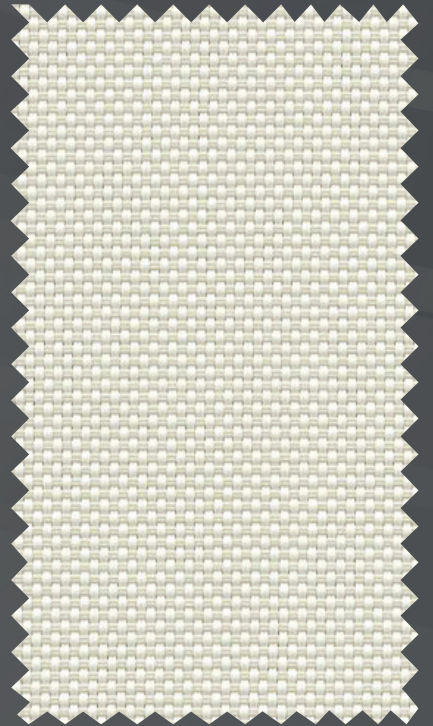
PG2 Almond (1% open)



PG2 Almond (3% open)



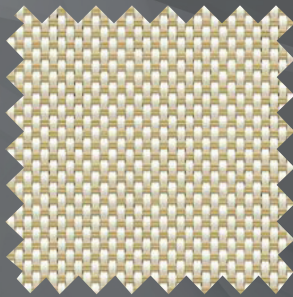
PG2 Almond (5% open)



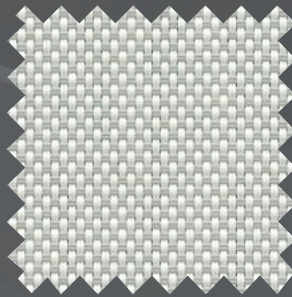
The above openness options are also available in the colors shown below.



1% Open PG1 Cotton



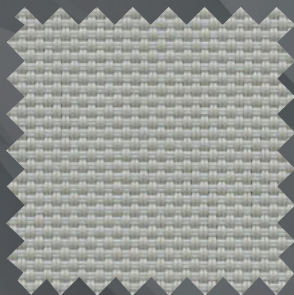
1% Open PG3 Wheat



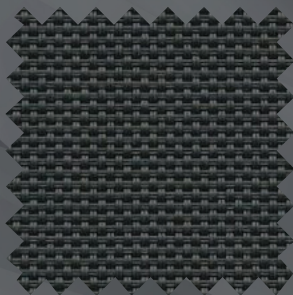
1% Open PG4 Stone



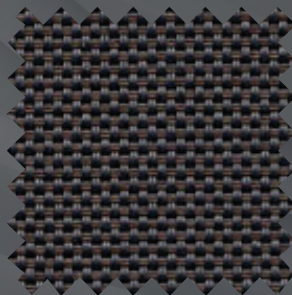
1% Open QG1 Barley



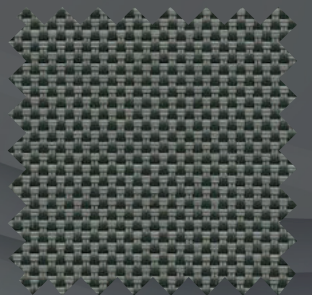
1% Open VG1 Nickel



1% Open VG2 Midnight



1% Open VG3 Bark



1% Open VG4 Slate

Digital sample of actual colors may vary slightly.



SheerWeave® Infinity[®]₂ 1%, 3%, & 5%

SheerWeave Infinity₂ sustainable sun control fabrics are eco-friendly full basketweaves designed to meet the most stringent environmental design standards. With 100% recycled content, 100% recyclable, and a PVC-free composition, Infinity₂ fabrics offer the same solar heat and glare control properties as traditional SheerWeave fabrics for conserving energy, harnessing natural light and maintaining interior comfort levels.

SHEERWEAVE STYLE Infinity₂

STANDARD WIDTH	63" and 98" (160 cm and 248.9 cm)	FABRIC THICKNESS	1%: 0.032 in (0.813 mm) 3%: 0.031 in (0.787 mm)	5%: 0.030 in (0.762 mm)
ROLL LENGTH	30 Linear Yards (27.4 lm)	OPENNESS FACTOR	1%: Approximately 1% 3%: Approximately 3%	5%: Approximately 5%
COMPOSITION	100% TPO (Thermoplastic Olefin), 20% TPO Fiber Yarn / 80% TPO Coating on TPO Yarn	UV BLOCKAGE	1%: Approximately 99% 3%: Approximately 97%	5%: Approximately 95%
MESH WEIGHT	1%: 13.9 oz/yd ² (471 g/m ²)	ACOUSTICAL VALUE	1%: NRC 0.20 / SAA 0.23	5%: NRC 0.10 / SAA 0.11
	3%: 13.69 oz/yd ² (464.17 g/m ²)		3%: NRC 0.20 / SAA 0.19	
		ACOUSTICAL PERFORMANCE	NRC (Noise Reduction Coefficient) and SAA (Sound Absorption Average) tested in accordance with ASTM C423-09a.	

SPECIFICATIONS

FIRE CLASSIFICATION	1%: NFPA 701 TM#1 (small scale), NFPA 101 (Class A Rating), CAN/ULC-S 109 (large and small scale), IBC Section 803.1.1 (Class A Rating) 3%: NFPA 701 TM#1 (small scale), NFPA 101 (Class A Rating), CAN/ULC-S 109 (large scale), IBC Section 803.1.1 (Class A Rating), BS 5867 Part 2 Type B Performance. 5%: NFPA 701 TM#1 (small scale), NFPA 101 (Class A Rating), CAN/ULC-S 109 (large and small scale), IBC Section 803.1.1 (Class A Rating), BS 5867 Part 2 Type B Performance, CAN/CGSB 2-4.162-M80.
BACTERIA AND FUNGAL RESISTANCE	ASTM E 2180, ASTM G21.
ENVIRONMENTAL CERTIFICATION	Certified to GREENGUARD and GREENGUARD Gold standards for low chemical emissions into indoor air during product usage.
SAFE USE	RoHS Compliant, US Consumer Product Safety Commission Section 101, ANSI/WCMA A 100.1-2007 for lead content and REACH Compliant.
STANDARD USES	Roller shades and panel tracks.
UV PROTECTION	SheerWeave sun control fabrics are an effective way to reduce harmful UV rays. Phifer Incorporated is a proud member of the Skin Cancer Foundation's Corporate Council.
WARRANTY	5-year interior.

TECHNICAL DATA

		SOLAR OPTICAL PROPERTIES												SHGC/G VALUE g-tot (glass & blind)					
		TS%			RS%			AS%			TV%			Single 1/4 CL			Insulating 1HA		
OPENNESS %	NUMBER	1%	3%	5%	1%	3%	5%	1%	3%	5%	1%	3%	5%	1%	3%	5%	1%	3%	5%
Cotton	PG1	20	20	23	68	70	68	12	10	9	18	19	22	0.29	0.28	0.30	0.22	0.21	0.22
Almond	PG2	15	17	20	61	61	60	24	22	20	12	15	18	0.31	0.32	0.33	0.23	0.23	0.23
Wheat	PG3	12	12	14	54	52	51	34	36	35	10	9	12	0.35	0.37	0.37	0.25	0.25	0.26
Stone	PG4	13	12	15	55	52	52	32	36	33	11	11	14	0.35	0.37	0.37	0.24	0.25	0.25
Barley	QG1	18	16	19	52	53	51	30	31	30	15	14	17	0.37	0.37	0.38	0.26	0.25	0.26
Nickel	VG1	8	9	10	37	36	34	55	55	56	7	8	11	0.42	0.44	0.45	0.30	0.30	0.30
Midnight	VG2	1	3	5	6	6	6	93	91	89	2	5	8	0.59	0.59	0.60	0.36	0.37	0.37
Bark	VG3	3	3	4	7	7	7	90	90	89	5	4	6	0.58	0.58	0.59	0.37	0.37	0.37
Slate	VG4	2	3	5	9	10	9	89	87	86	4	5	7	0.57	0.57	0.58	0.36	0.36	0.36



PRODUCT CERTIFIED FOR LOW CHEMICAL EMISSIONS
UL.COM/GG
UL 2818



*TS - Solar Transmittance, RS - Solar Reflectance, AS - Solar Absorptance, TV - Visual Transmittance *SHGC = Solar Heat Gain Coefficient *1/4 CL = 1/4" Clear Glass, 1 HA = 1" Heat Absorbing Glass *Fabrics Installed Internally, Zero-Degree Profile Angle *Solar Heat Gain Coefficient (SHGC) shown calculated according to Office of Building Technology, State and Community Programs, Energy Efficiency and Renewable Energy, U.S. Department of Energy's definition of SHGC. SHGC represents the percentage of solar heat gain that is transmitted to the interior through the glass and shading system. If you are using glass whose performance is listed in terms of SC, you may convert to SHGC by multiplying the SC by 0.87.



411 S. Pearl Street | Spiceland, IN 47385
765.987.7999 | 800.238.7999

draperinc.com

For additional information, questions, or to request fabric samples, please contact your Draper sales representative or scan to visit request.draperinc.com



INCORPORATED

© SheerWeave is a registered trademark of PHIFER INCORPORATED.
© MICROBAN is a registered trademark of Microban Products Company.
TM UL, the UL logos and the UL mark are trademarks of UL LLC.
© PHIFER INCORPORATED 3028500 0224