



JM Technical Textiles

DRAPER®

0%

Apollo Blackout

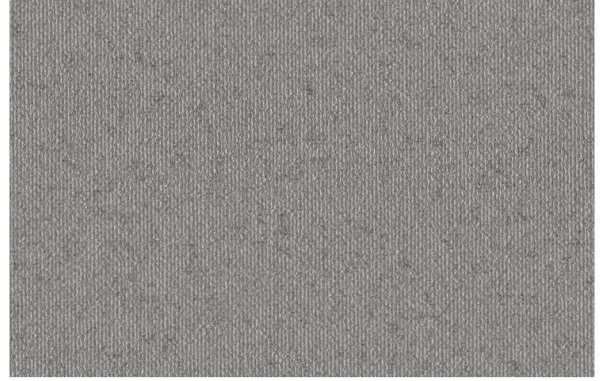
# Apollo Blackout 0%

40798 310 cm | 122"



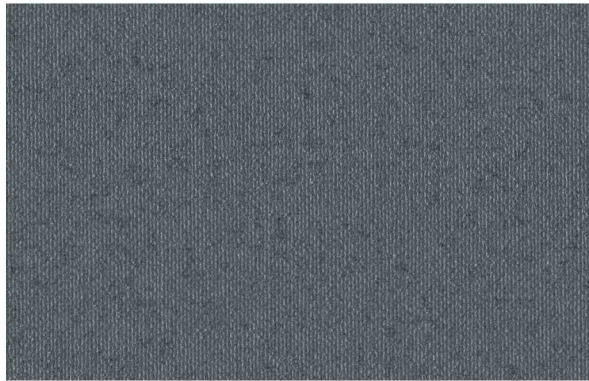
10355

Midnight Black



10331

Stone



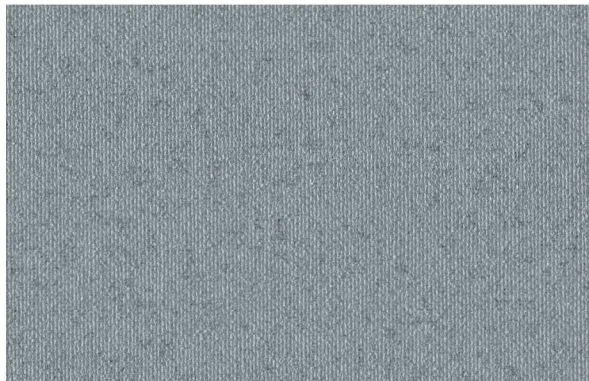
6625

New York Grey



4899

Perfect Greige



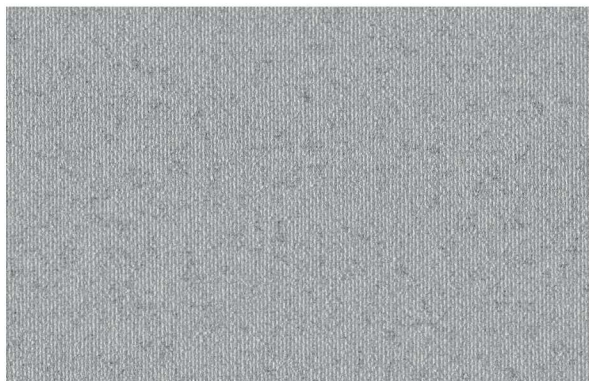
5770

French Grey



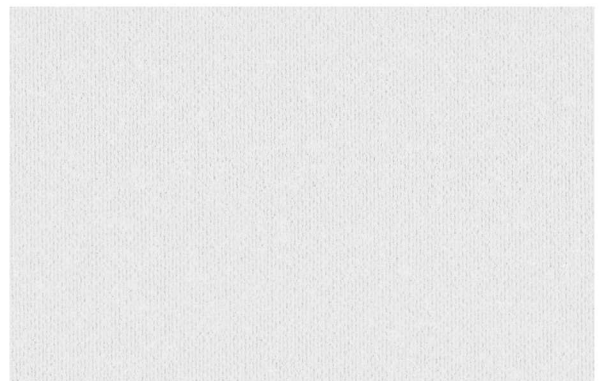
6117

Cream



5108

Grey Haze



4898

Snow

# Apollo Blackout 0%



railroadable



extra wide fabric width 310 cm / 122"



PVC-free



high reflection in all colors



halogen- and antimony-free finish



flame retardant

color	optical factors										thermal factors					
	fabric						classification				fabric				fabric + glazing	
	visible light (%)					R <sub>a</sub>	glare control	night privacy	visual contact	daylight utilisation	solar radiation (%)				glazing D g=0,32 U <sub>g</sub> =1,1	
T <sub>v</sub>	R <sub>v</sub>	A <sub>v</sub>	T <sub>v,n-n</sub>	T <sub>v,n-dif</sub>	T <sub>s</sub>						R <sub>s</sub>	A <sub>s</sub>	T <sub>UV</sub>	g <sub>tot</sub>	class	
4898	0	80	20	0,0	0,0	69	4	4	0	0	0	68	32	0	0,14	3
4899	0	80	20	0,0	0,0	73	4	4	0	0	0	70	30	0	0,14	3
5108	0	81	19	0,0	0,0	83	4	4	0	0	0	69	31	0	0,14	3
5770	0	80	20	0,0	0,0	60	4	4	0	0	0	68	32	0	0,14	3
6117	0	79	21	0,0	0,0	71	4	4	0	0	0	68	32	0	0,14	3
6625	0	79	21	0,0	0,0	68	4	4	0	0	0	67	33	0	0,15	2
10331	0	79	21	0,0	0,0	65	4	4	0	0	0	67	33	0	0,15	2
10355	0	87	13	0,0	0,0	73	4	4	0	0	0	77	23	0	0,15	2

Data is measured according to EN 410:2011 and EN 14500:2021. Calculations of g<sub>tot</sub> are defined according to the detailed method EN ISO 52022-3:2017 using solar control double glazing type D (g=0,32; U<sub>g</sub>=1,1). Other glazing types can be calculated on request.

Classifications: 0 (very little effect), 1 (little effect), 2 (moderate effect), 3 (good effect) and 4 (very good effect) refer to EN 14501:2025.

# Apollo Blackout 0%

<b>Article</b>	<b>40798</b>	
<b>Width</b>		310 cm / 122"
<b>Base material</b>	100 % polyester	
<b>Weight approx.</b>	EN 12127	430 g/m <sup>2</sup> / 12,7 oz/yd <sup>2</sup>
<b>Thickness approx.</b>	EN ISO 5084	0,55 mm / 0,022"
<b>Openness factor OF</b>	EN 14500	0 %
<b>Flame retardancy</b>	NFPA 701 / California U.S. Title 19	
<b>Sound absorption</b>	EN ISO 10534-2 ASTM C423	NRC = 0,35
<b>Light fastness (window side)</b>	EN ISO 105-B02	7
<b>Tensile properties: Determination of max. force Elongation at max. force</b>	EN ISO 13934-1	warp: > 80 daN - weft: > 130 daN warp: approx. 17 % - weft: approx. 24 %
<b>Suitable for moist atmosphere</b>	yes	
<b>Manufacturing guidance</b>	to cut with cold knife, to stick together with welding agent	
<b>Roll length approx.</b>	25 m / 27 yd	
<b>Care instruction</b>	spongeable	

The information provided in this document do not exempt processors from carrying out own tests and trials as further handling and processing may show significant effects on our products. Application, utilization and processing of products are beyond our control and are therefore the sole responsibility of the processors.

All specifications are based on current knowledge and experience. They are based on average values and may deviate within the standard tolerance limits. Subject to technical modifications.

## Product certificates and guarantees



**REACH**  
compliant

## Sustainable building certificates

All fabrics certified according to SCS Advantage™ Gold can contribute to credits in sustainable building certifications, such as DGNB, BREEAM and LEED.



 made in Germany

