

NEW!

Satiné™

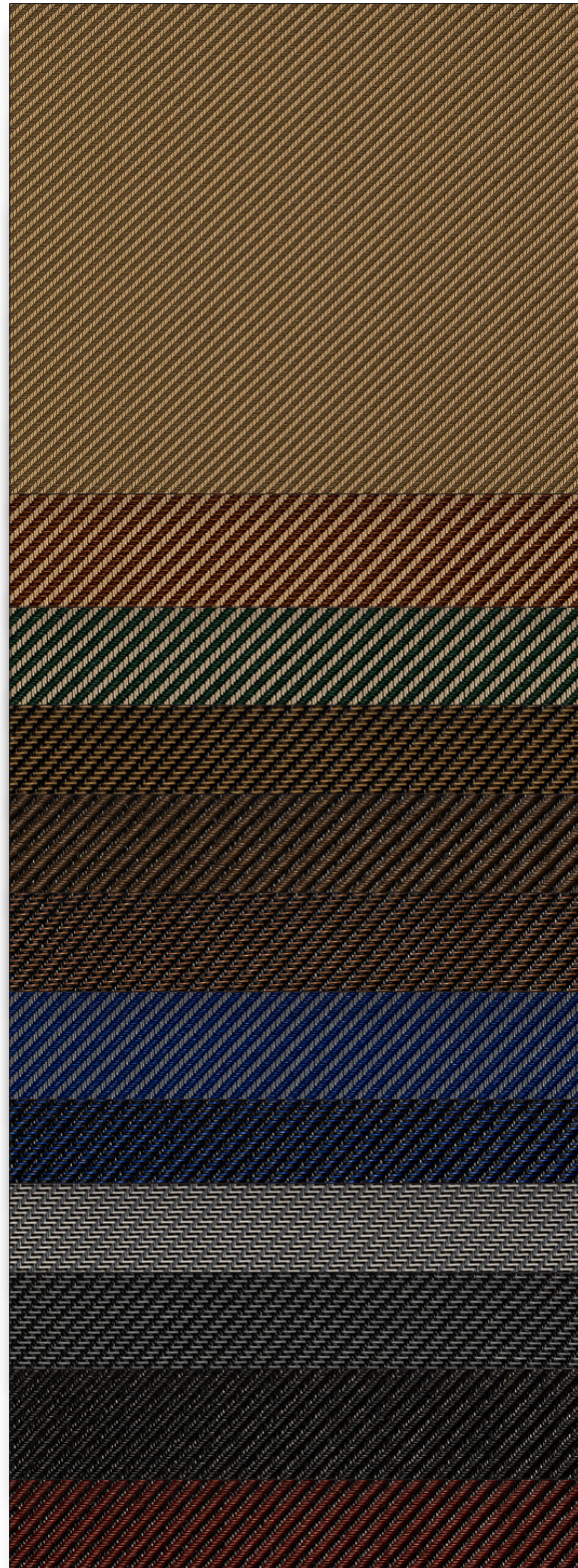
Outdoor Solar Screen | 1% 5% openess



1% 30M394 | Charcoal/Charcoal-Navy



5% 30M394 | Charcoal/Charcoal-Navy



910988
Sable/Wood

10M986
Sable/
Garnet-Auburn

910993
Sable/Forest

30M687
Charcoal/
Cocoa-Fawn

930961
Charcoal/Cocoa

30M386
Charcoal/
Charcoal-Auburn

901994
Grey/Navy

30M394
Charcoal/
Charcoal-Navy

01M230
Grey/Fog-Charcoal

30M301
Charcoal/
Charcoal-Grey

930930
Charcoal/Charcoal

930992
Charcoal/Garnet

Fabrics sampled on waterfall are 5% openess.

Specifications

Item Number	1% 005701 5% 005705
Openness Factor	1% & 5%
Composition	42% Fiberglass 58% Vinyl
UV Blockage	Approximately 95% - 99%
Standard Packaging	Rolls of 30 ly (27 lm)
Width	122" (310 cm)
Weight	1% 17.8 oz/yd ² (605 g/m ²) ± 5% 5% 15.4 oz/yd ² (522 g/m ²) ± 5%
Thickness	1% 0.033 in (0.83 mm) ± 5% 5% 0.032 in (0.81 mm) ± 5%

Classifications

Fire Classifications	NFPA 701-19 TM#1, California U.S. Title 19, CAN/ULC-S109-14 Small & Large Flame Test
Bacterial & Fungal Resistance Environment	ASTM E2180, ASTM G21
Acoustical Performance	RoHS - Lead Free, GREENGUARD Gold 1% NRC: 0.15, SAA: 0.16 5% NRC: 0.05, SAA: 0.06

Satiné™

ITEM	COLOR	SIDE*	thermal Total Solar						optical			
			Rs %		As %		Ts %		Rv %		Tv %	
			1	5	1	5	1	5	1	5	1	5
910988	Sable/Wood	1	28	28	68	63	4	9	27	27	2	7
		2	25	25	71	66	4	9	23	24	3	8
10M986	Sable/ Garnet-Auburn	1	25	25	73	67	2	8	24	24	2	7
		2	20	21	78	71	2	8	19	20	2	7
910993	Sable/Forest	1	24	24	73	68	3	8	22	23	2	7
		2	18	20	79	72	3	8	16	18	2	7
30M687	Charcoal/ Cocoa-Fawn	1	8	8	91	87	1	5	8	7	1	5
		2	9	9	90	86	1	5	9	8	1	4
930961	Charcoal/Cocoa	1	6	5	93	90	1	5	6	5	1	5
		2	6	5	93	91	1	4	6	5	1	4
30M386	Charcoal/ Charcoal-Auburn	1	6	5	93	90	1	5	6	5	1	5
		2	6	6	93	89	1	5	6	6	1	5
901994	Grey/Navy	1	21	21	74	70	5	9	13	14	2	6
		2	21	20	74	71	5	9	12	12	2	6
30M394	Charcoal/ Charcoal-Navy	1	7	6	92	89	1	5	5	5	1	4
		2	7	7	92	88	1	5	5	5	1	4
01M230	Grey/ Fog-Charcoal	1	23	22	74	69	3	9	21	21	2	7
		2	23	22	74	69	3	9	21	21	2	7
30M301	Charcoal/ Charcoal-Grey	1	7	6	91	87	2	7	7	6	2	6
		2	8	7	90	86	2	7	7	7	2	6
930930	Charcoal/Charcoal	1	4	4	95	91	1	5	4	4	1	5
		2	4	4	95	91	1	5	4	4	1	5
930992	Charcoal/Garnet	1	6	5	93	91	1	4	6	5	1	4
		2	6	5	93	91	1	4	6	5	1	4

*Side 1: Dominant diagonal line moves up and to the left. Side 2: Dominant diagonal line moves up to the right.

10 Year Exterior/Interior

Remove dust with a soft duster, cloth, sponge or low-suction vacuum. For minor stains clean with a mild dish detergent and lukewarm water using a soft brush, cloth or sponge. For tougher stains and disinfecting instructions visit MermetUSA.com.

Mermet Corporation
5970 N. Main Street | Cowpens, SC 29330
Ph 1.866.902.9647 | info@MermetUSA.com

MermetUSA.com



Scan here for complete fabric resources.