

These Draper room-darkening window shade fabrics are constructed of tough woven fiberglass coated on both sides with durable, sun-resistant, flexible vinyl. They are flame, fade, and mildew resistant, washable and tear proof. Designed for the toughest service, without that “institutional look.”

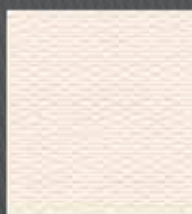
## SunBloc Series SB9000 (Triopak II / Opaque)



White  
SB9010



Ivory  
SB9020



Palomino  
SB9025



Grey  
SB9040



Oyster  
SB9070



Black  
SB9050



Champagne  
SB9060



Dark Grey  
SB9080

## SunBloc Series SB9100 (Duopak / Duplex) White on the outside.



Grey  
SB9110



Sage  
SB9125



Wheat  
SB9130



Dark Grey  
SB9140



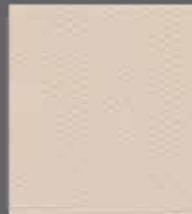
Ivory  
SB9102



Putty  
SB9150



Mineral Dust  
SB9145



Linge  
SB9185



Denim  
SB9135



Black  
SB9170

# DRAPER SUNBLOC SB9000/SB9100 SPECIFICATIONS

## OPAQUE VINYL FIBERGLASS FABRICS



SunBloc fabric on a Manual FlexShade®

- Draper's opaque vinyl fiberglass fabrics are real energy savers —reducing heat loss in winter, heat build-up in summer. In cold weather, window shades can reduce heat loss through glass by as much as 25%. When it's hot outside, shades can cut heat gain by 50%.\*



### SUNBLOC SERIES SB9000 (TRIOPAK II / OPAQUE)

The toughest shade fabric ever developed, SB9000 is available in eight neutral colors. It is an excellent insulating material, reducing heat transfer both winter and summer. Constructed of tough materials: close-woven fiberglass coated on both sides with durable, sun-resistant, flexible vinyl. Flame, fade and mildew resistant, washable, and tear proof.

Specification: Close woven fiberglass base textile with sun-resistant vinyl film securely bonded to each side. Opaque, fire retardant, washable and stain resistant. Tensile strength 190 lbs. warp x 180 lbs. fill.

Other colors available: Tan.

### SUNBLOC SERIES SB9100 (DUOPAK / DUPLEX)

White on the outside, ten decorator colors on the inside. Close-woven fiberglass is sandwiched between two layers of tough, flexible vinyl. Flame, fade and mildew-proof, SB9100 is designed for the toughest service, without the "institutional look."

Specification: Close woven fiberglass base textile with sun-resistant vinyl film securely bonded to each side. Opaque, fire retardant, washable and stain resistant. Tensile strength 190 lbs. warp x 180 lbs. fill.

Other colors available: Chocolate, Forest Green, Burgundy, and Navy.

### TECHNICAL DATA SB9000

- Composition: 25% fiberglass; 75% PVC coating
- Opacity: 100%
- Shading Coefficient (1/4" glass): .25
- Maximum width without seam: 72"
- Fabric Thickness: .015"
- Weight/sq. yard: 12 oz.
- Fire retardant rating: NFPA 701  
Small Scale and California Title 19
- Bacterial, Mold and Mildew: ASTM G21  
and ASTM 1428 Certified
- Environmental Benefits: GreenGuard  
and GreenGuard Gold Certified, Lead Free  
Certified; REACH & RoHS Compliant

### TECHNICAL DATA SB9100

- Composition: 25% fiberglass; 75% PVC coating
- Opacity: 100%
- Shading Coefficient (1/4" glass): .25
- Maximum width without seam: 72"
- Fabric Thickness: .013"
- Weight/sq. yard: 12 oz.
- Fire retardant rating: NFPA 701  
Small Scale and California Title 19
- Bacterial, Mold and Mildew: ASTM G21  
and ASTM 1428 Certified
- Environmental Benefits: GreenGuard  
and GreenGuard Gold Certified, Lead Free  
Certified; REACH & RoHS Compliant

\*"Window Shades and Energy Conservation," Illinois Institute of Technology