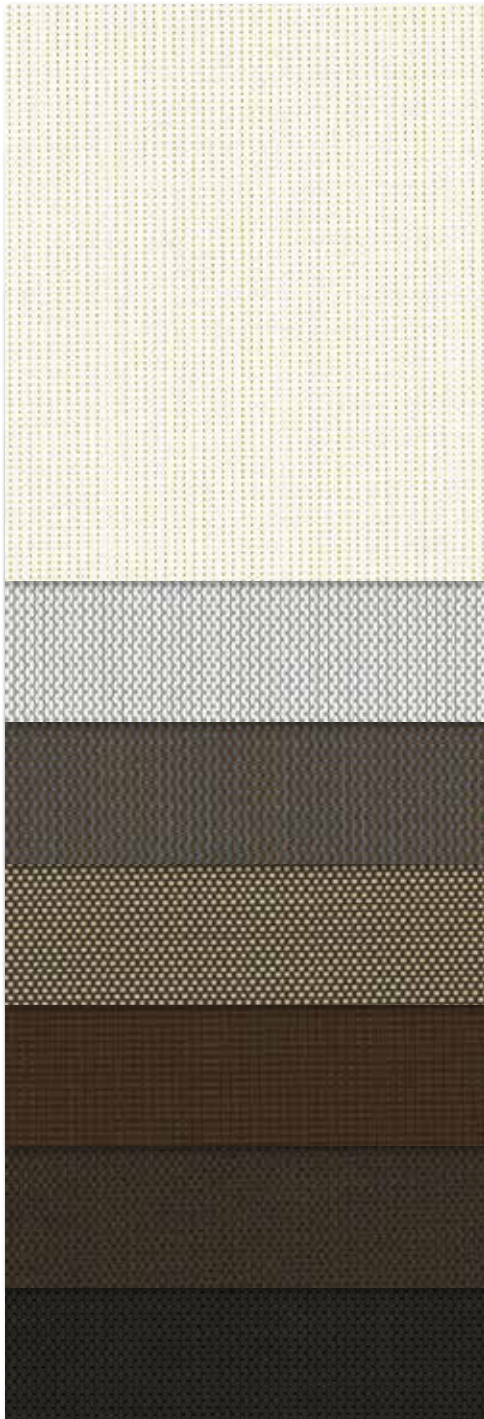




# Vienne™

5% & 10% Openness



5% Openness  
▼

902902  
White/White

902907  
White/Pearl

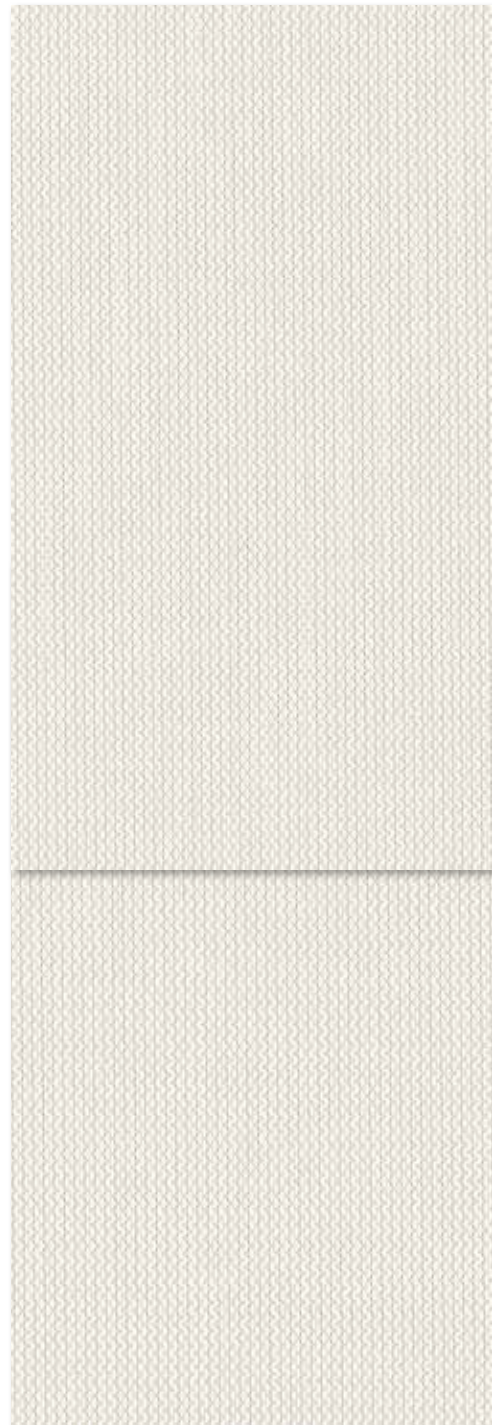
961901  
Cocoa/Grey

961923  
Cocoa/Straw

961961  
Cocoa/Cocoa

930961  
Charcoal/Cocoa

930930  
Charcoal/  
Charcoal



902920  
White/Linen  
5% Openness

902920  
White/Linen  
10% Openness

### Specifications 5% 10%

Item Number	001805	001810
Product Category	Conventional	
Openness Factor	5%	10%
Composition % Fiberglass / % Vinyl	42% / 58%	
UV Blockage (approx.)	95%	90%
Fabric Style	Plain Weave	

### Dimensions

Standard Packaging		Rolls 30 ly (27 lm)
Width	5%, 10%	98" (250 cm), 122" (310 cm)*
Weight	5%	11.83 oz / yd <sup>2</sup> (401 g / m <sup>2</sup> ) ± 5%
	10%	10.91 oz / yd <sup>2</sup> (370 g / m <sup>2</sup> ) ± 5%
Thickness	5%	0.018" (0.46 mm) ± 5%
	10%	0.019" (0.47 mm) ± 5%

### Fenestration

#### Fabric Properties

#### Fabric & Glass

COLOR	NUMBER	OPENNESS	Thermal				Optical		Commercial		Residential	
			Total Solar			Rv%	Tv%	SHGC % Improvement		SHGC		
			Rs%	As%	Ts%					Interior	Exterior	Interior
White/Linen	902920	5%	65	17	18	69	15	50	79	0.33	0.16	
		10%	63	15	22	67	20	47	74	0.36	0.19	
White/White	902902	5%	73	8	19	78	17	55	76	0.29	0.16	
		10%	69	8	23	74	21	53	74	0.32	0.19	
White/Pearl	902907	5%	55	33	12	59	10	42	84	0.38	0.12	
		10%	54	26	20	57	18	39	76	0.41	0.17	
Cocoa/Grey	961901	5%	12	82	6	12	6	16	84	0.61	0.11	
		10%	11	78	11	11	11	13	82	0.64	0.13	
Cocoa/Straw	961923	5%	21	73	6	23	6	21	84	0.56	0.10	
		10%	19	71	10	20	9	18	84	0.59	0.12	
Cocoa/Cocoa	961961	5%	8	86	6	8	6	13	84	0.63	0.11	
		10%	7	82	11	7	11	11	82	0.66	0.13	
Charcoal/Cocoa	930961	5%	6	87	7	6	7	16	79	0.58	0.14	
		10%	5	80	15	5	15	11	82	0.67	0.16	
Charcoal/Charcoal	930930	5%	5	89	6	5	7	13	82	0.64	0.11	
		10%	4	84	12	4	12	8	79	0.67	0.14	

\*122" (310 cm) available in select colors-Charcoal/Charcoal (930930) & Charcoal/Cocoa (930961). Roll length of this width is 30 ly (27 lm).

### Cleaning

Remove dust with vacuum cleaner or compressed air. Do not scrub. Do not use solvents or any abrasive substance which might damage the coating of the fabric. Clean with a sponge or a soft brush dipped in soapy water using mild detergent. Rinse with clean water. Leave the blind down until completely dry. You can also very gently rub the fabric with a clean white pencil eraser to remove small stains.

The fabric performance tests were conducted in accordance with ASTM E891 & ASTM E903-96: Total Solar Transmittance (Ts), Total Solar Reflectance (Rs), Total Solar Absorptance (As), Visible Reflectance (Rv), and Visible Transmission (Tv). Glass performance tests for Solar Heat Gain Coefficient (SHGC) were conducted using the Lawrence Berkeley National Laboratory Window 7.3 NFRC certified software. SHGC % improvement for commercial applications is based on a standard commercial glass makeup of Double Glazing 6 mm / ½" air / 6 mm with low E on surface #2. SHGC for residential applications is based on a default residential glass makeup of 3 mm clear glass / ½" air / 3 mm clear glass. Results for SHGC were obtained using the center of glass. For up-to-date test results, performance specifications and larger samples, contact the Mermet Technical Department at: [www.mermetusa.com](http://www.mermetusa.com).

### Classifications

Fire		NFPA 701-10 TM#1, California U.S. Title 19, CAN/ULC-S109-03 Small & Large Flame Test
Bacterial & Fungal Resistance		ASTM E2180, ASTM G21
Environmental Benefits		RoHS - Lead Free
Acoustical Performance	5% 10%	NRC: 0.10, SAA: 0.13 NRC: 0.05, SAA: 0.07



VIENNE 5%



VIENNE 10%



**MERMET**

Sun Control Textiles™

For additional information, questions, or to request fabric samples, please contact Mermet's Technical Fabric Specialist at [info@mermetusa.com](mailto:info@mermetusa.com) or call toll free at 866.902.9647. [www.mermetusa.com](http://www.mermetusa.com)

**DRAPER®**

411 S. Pearl St. | Spiceland, IN 47385  
765.987.7999 | 800.238.7999  
[draperinc.com](http://draperinc.com)