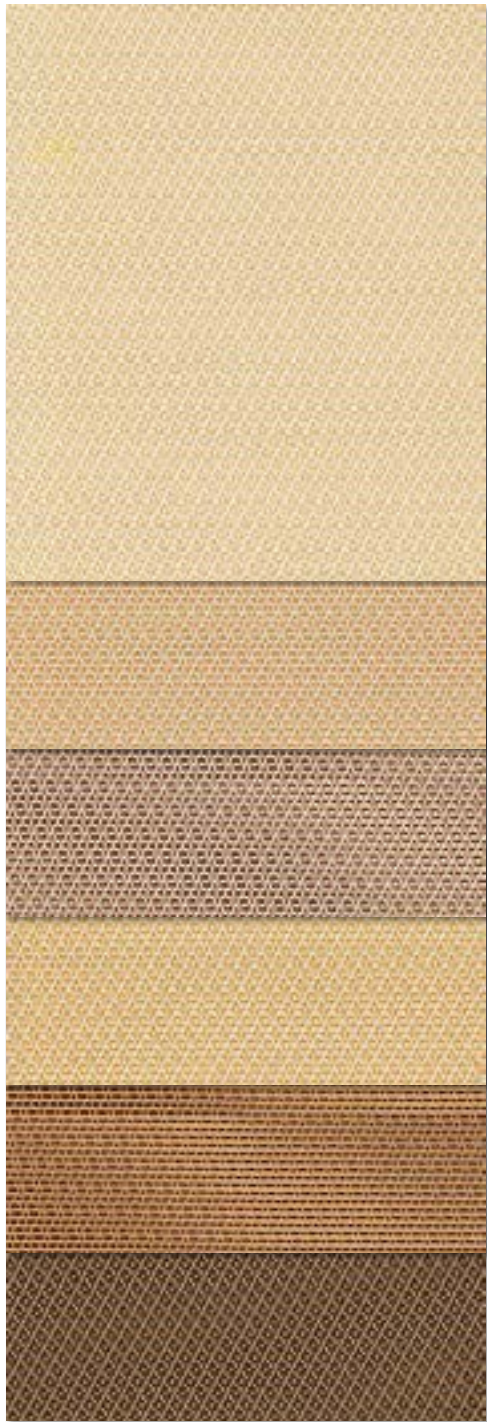


T Screen

3% Openness



002020
White/Linen

00M151
White/
Sable-Straw

00M164
White/
Sable-Cocoa

00M163
White/
Sable-Mustard

00M153
Sable/
Straw-Cocoa

010030
Sable/Charcoal



002002
White/White

002007
White/Pearl

00M116
White/
Charcoal-Grey

000M85
Charcoal/
Linen-Pearl

030001
Charcoal/Grey

030030
Charcoal/
Charcoal

T Screen

3% Openness

Specifications

Item Number	009803
Product Category	Decorative
Openness Factor	3%
% Fiberglass / % Vinyl	36% Fiberglass / 64% Vinyl
UV Blockage / approx.	97%
Fabric Style	Offset Twill

Dimensions

Standard Packaging	Rolls 30 ly (27 lm)
Width	98" (250 cm)
Weight	11.6 oz / yd ² (395 g / m ²) ± 5%
Thickness	0.025" (0.64 mm) ± 5%

Fenestration

Fabric Properties

Fabric & Glass

COLOR	NUMBER	SIDE*	Thermal Total Solar		Optical			Commercial SHGC % Improvement		Residential SHGC	
			Rs%	As%	Ts%	RV%	Tv%	Interior	Exterior	Interior	Exterior
White/Linen	002020	Street side / Room side	66/61	17/22	17/17	70/64	13/14	53/47	79/79	0.32/0.35	0.15/0.15
White/Sable-Straw	00M151	Street side / Room side	64/56	21/28	15/16	67/57	12/13	50/42	82/79	0.33/0.38	0.13/0.15
White/Sable-Cocoa	00M164	Street side / Room side	59/44	30/44	11/12	63/45	9/9	47/34	84/82	0.35/0.44	0.11/0.13
White/Sable-Mustard	00M163	Street side / Room side	64/56	21/28	15/16	67/57	12/13	50/42	82/79	0.33/0.38	0.13/0.15
Sable/Straw-Cocoa	00M153	Street side / Room side	34/31	57/59	9/10	32/30	6/7	26/26	84/84	0.49/0.51	0.11/0.12
Sable/Charcoal	010030	Street side / Room side	25/15	68/77	7/8	25/16	6/6	24/18	84/82	0.53/0.58	0.11/0.12
White/White	002002	Street side / Room side	70/70	12/12	18/18	75/75	15/15	55/55	79/79	0.30/0.30	0.15/0.15
White/Pearl	002007	Street side / Room side	60/49	28/38	12/13	65/52	10/11	47/39	84/79	0.34/0.41	0.12/0.14
White/Charcoal-Grey	00M116	Street side / Room side	54/36	37/54	9/10	58/38	7/8	45/32	87/82	0.37/0.48	0.10/0.12
Charcoal/Linen-Pearl	000M85	Street side / Room side	8/18	88/77	4/5	9/20	4/4	16/21	84/84	0.61/0.56	0.11/0.10
Charcoal/Grey	030001	Street side / Room side	6/11	90/84	4/5	6/10	4/4	13/16	84/84	0.62/0.60	0.11/0.11
Charcoal/Charcoal	030030	Street side / Room side	4/4	93/93	3/3	4/4	3/3	13/13	84/84	0.63/0.63	0.10/0.10

*Street side: identified by the dominant diagonal line moving down toward the right; Room side: identified by the dominant diagonal line moving up toward the right.

Cleaning

Remove dust with vacuum cleaner or compressed air. Do not scrub. Do not use solvents or any abrasive substance which might damage the coating of the fabric. Clean with a sponge or a soft brush dipped in soapy water using mild detergent. Rinse with clean water. Leave the blind down until completely dry. You can also very gently rub the fabric with a clean white pencil eraser to remove small stains.

Classifications

Fire	NFPA 701-10 TM#1, California U.S. Title 19
Bacterial & Fungal Resistance	ASTM E2180, ASTM G21
Environmental Benefits	RoHS - Lead Free
Acoustical Performance	NRC: 0.15, SAA: 0.15

The fabric performance tests were conducted in accordance with ASTM E891 & ASTM E903-96: Solar Transmittance (Ts), Solar Reflectance (Rs), Solar Absorptance (As), Visible Reflectance (Rv), and Visible Transmission (Tv). Glass performance tests for Solar Heat Gain Coefficient (SHGC) were conducted using the Lawrence Berkeley National Laboratory Window 7.3 NFRC certified software. SHGC % improvement for commercial applications is based on a standard commercial glass makeup of Double Glazing 6 mm / 1/2" air / 6 mm with low E on surface #2. SHGC for residential applications is based on a default residential glass makeup of 3 mm clear glass / 1/2" air / 3 mm glass. Results for SHGC were obtained using the center of glass. Acoustical performance was tested in accordance with ASTM C423-09a: NRC is Noise Reduction Coefficient, SAA is Sound Absorption Average. For up-to-date test results, performance specifications and larger samples, contact the Mermet Technical Department at: www.mermetusa.com.



For additional information, questions, or to request fabric samples, please contact Mermet's Technical Fabric Specialist at info@mermetusa.com or call toll free at 866.902.9647. www.mermetusa.com



411 S. Pearl St. | Spiceland, IN 47385
765.987.7999 | 800.238.7999
draperinc.com