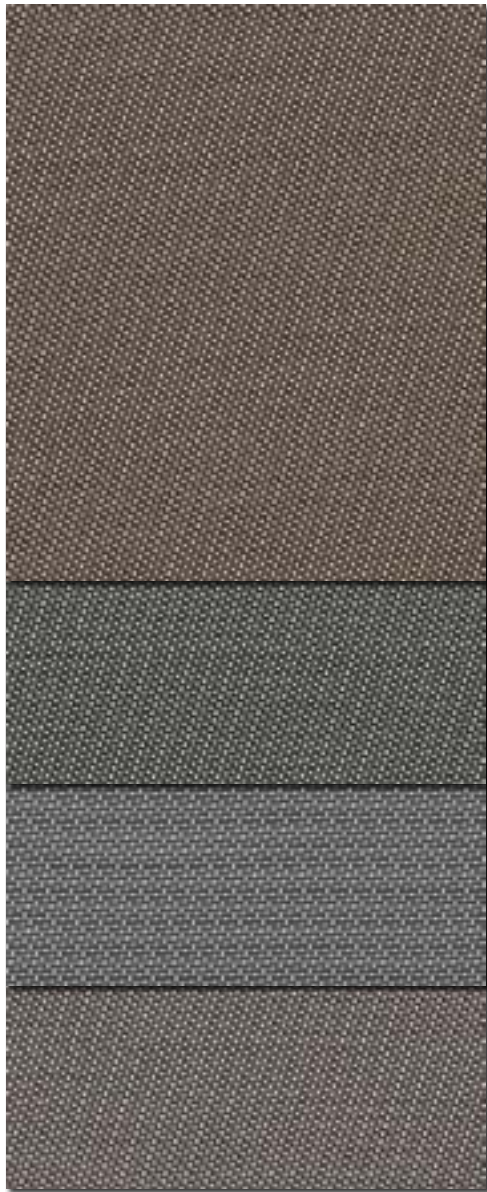




# T Screen | WITH **KOOLBLACK** TECHNOLOGY

1%, 3%, & 5% Openness



1% Openness  
▼

002032  
White/Cocoa

002035  
White/Charcoal

00K131  
White/  
Charcoal-Grey

00K302  
White/  
Charcoal-Cocoa



002131  
White/Grey  
1% Openness

002131  
White/Grey  
3% Openness

002131  
White/Grey  
5% Openness

## Maximum performance, Maximum value

- Improved near-infrared reflection for enhanced reduction in heat gain.
- Reflects up to 69% of all solar radiation.
- High reflectivity reduces temperature and cooling costs.

- Provides the clean, crisp views of dark fabrics.
- Blocks up to 93% of all visible light for visual comfort.
- Maximum glare control for effective daylighting and comfortable spaces.

White fabric side to exterior, dark fabric side to interior.

Digital sample of actual colors may vary slightly.



### Specifications 1% 3% 5%

Item Number	009701	009703	009705
Product Category	High Performance		
Openness Factor	1%	3%	5%
% Fiberglass / % Vinyl	36% / 64%	36% / 64%	36% / 64%
UV Blockage / approx.	99%	97%	95%
Fabric Style	Satin		

### Dimensions

Standard Packaging		Rolls 30 ly (27 lm)
Width	1%, 3%, 5%	98" (250 cm), 122" (310 cm)
Weight	1%	13.54 oz / yd <sup>2</sup> (459 g / m <sup>2</sup> ) ± 5%
	3%	13.27 oz / yd <sup>2</sup> (450 g / m <sup>2</sup> ) ± 5%
	5%	12.48 oz / yd <sup>2</sup> (423 g / m <sup>2</sup> ) ± 5%
Thickness	1%	0.024" (0.61 mm) ± 5%
	3%	0.029" (0.74 mm) ± 5%
	5%	0.027" (0.69 mm) ± 5%

### Fenestration

#### Fabric Properties

#### Fabric & Glass

COLOR	NUMBER	SIDE	OPENNESS	Thermal Total Solar						Optical		Commercial SHGC % Improvement		Residential SHGC	
				Rs IR %	Rs%	As%	Ts%	RV%	Tv%	Interior	Exterior	Interior	Exterior		
White/Grey	002131	Street side / Room side	1%	72/70	69/52	18/36	13/12	69/38	7/6	55/34	84/82	0.28/0.39	0.11/0.13		
			3%	70/69	68/53	18/34	14/13	68/39	9/7	53/34	84/82	0.29/0.39	0.12/0.14		
			5%	67/67	63/49	20/35	17/16	60/35	11/10	47/32	82/79	0.33/0.42	0.15/0.16		
White/Cocoa	002032	Street side / Room side	1%	71/69	68/46	19/41	13/13	67/26	7/6	53/26	87/82	0.30/0.45	0.11/0.14		
			3%	67/65	62/44	23/40	15/16	60/27	8/9	45/24	84/79	0.35/0.47	0.13/0.16		
			5%	64/63	57/41	26/41	17/18	53/22	10/10	39/21	82/79	0.39/0.50	0.14/0.17		
White/Charcoal	002035	Street side / Room side	1%	69/67	65/43	24/46	11/11	63/24	4/4	50/26	87/84	0.31/0.46	0.10/0.13		
			3%	66/65	62/43	23/41	15/16	60/25	8/9	45/24	84/79	0.35/0.47	0.13/0.16		
			5%	64/62	57/39	26/43	17/18	52/19	9/10	39/18	82/79	0.39/0.51	0.14/0.17		
White/Charcoal-Grey	00K131	Street side / Room side	1%	72/70	69/48	20/41	11/11	68/30	4/4	55/29	87/84	0.28/0.41	0.10/0.13		
			3%	69/67	66/48	20/38	14/14	66/32	7/7	53/32	84/82	0.30/0.42	0.12/0.15		
			5%	66/65	61/45	22/38	17/17	58/27	10/10	45/26	82/76	0.34/0.45	0.15/0.17		
White/Charcoal-Cocoa	00K302	Street side / Room side	1%	69/67	65/44	22/44	13/12	64/25	7/6	50/26	84/82	0.32/0.45	0.11/0.14		
			3%	67/65	62/44	23/40	15/16	60/26	8/9	45/24	84/79	0.35/0.47	0.13/0.16		
			5%	64/62	57/40	26/43	17/17	53/20	9/10	39/21	82/79	0.39/0.50	0.14/0.16		

Street side: identified by the white side; Room side: identified by the color side.

### Cleaning

Remove dust with vacuum cleaner or compressed air. Do not scrub. Do not use solvents or any abrasive substance which might damage the coating of the fabric. Clean with a sponge or a soft brush dipped in soapy water using mild detergent. Rinse with clean water. Leave the blind down until completely dry. You can also very gently rub the fabric with a clean white pencil eraser to remove small stains.

The fabric performance tests were conducted in accordance with ASTM E891 & ASTM E903-96: Total Solar Transmittance (Ts), Total Solar Reflectance (Rs), Solar Reflectance in Infrared (Rs IR), Total Solar Absorptance (As), Visible Reflectance (RV), and Visible Transmission (Tv). Glass performance tests for Solar Heat Gain Coefficient (SHGC) were conducted using the Lawrence Berkeley National Laboratory Window 7.3 NFRC certified software. SHGC % improvement for commercial applications is based on a standard commercial glass makeup of Double Glazing 6 mm / 1/2" air / 6 mm with low E on surface #2. SHGC for residential applications is based on a default residential glass makeup of 3mm clear glass / 1/2" air / 3mm clear glass. Results for SHGC were obtained using the center of glass. For up-to-date test results, performance specifications and larger samples, contact the Mermet Technical Department at: [www.mermetusa.com](http://www.mermetusa.com).

### Classifications

Fire	NFPA 701-10 TM#1, California U.S. Title 19 CAN/ULC-S109-03 Small & Large Flame Test
Bacterial & Fungal Resistance	ASTM E2180, ASTM G21
Environmental Benefits	RoHS - Lead Free
Acoustical Performance	1% NRC: 0.10, SAA: 0.11 3% NRC: 0.05, SAA: 0.08 5% NRC: 0.10, SAA: 0.07

