



1% & 5% Openness



000002
White

000010
Sand

000020
Linen

000055
Mushroom

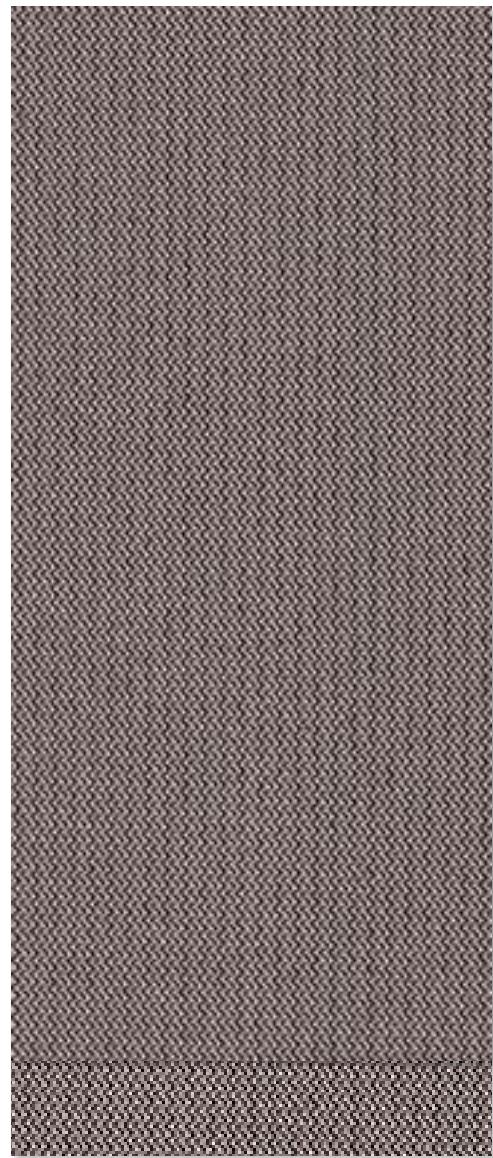
000071
Suede

000015
Dusk

000022
Stone

A00030
Onyx

These colors shown in 1% openness



1%

5%

000001 Pewter

Recyclable Designer Shade Fabric

- 100% Recyclable—Zero Waste Production
- PVC-Free
- Cradle to Cradle Certified™ Bronze
- Contains up to 89% Repreve® fibers, made from 100% recycled post-industrial and consumer waste

- Solar control: reduces glare, reflects light, provides clean view through
- Made in the USA

Digital sample of actual colors may vary slightly.



Specifications 1% 5%

Item number	002501	002505
Product category	Sustainable	
Openness factor	1%	5%
%Polyester / %Recycled content	100 / 89	100 / 89
UV Blockage / approx.	99%	95%
Fabric style	Warp Knit	

Dimensions

Standard Packaging	Rolls 50 ly (46 lm)	
Width	1% & 5%	118" (300 cm)
Weight	1%	5.87 oz / yd ² (199 g / m ²) ± 5%
	5%	5.01 oz / yd ² (170 g / m ²) ± 5%
Thickness	1%	0.019" (0.49 mm) ± 5%
	5%	0.017" (0.44 mm) ± 5%

Fenestration

		Fabric Properties								Fabric & Glass						
		Thermal Total Solar						Optical				Commercial		Residential		
		Rs%		As%		Ts%		Rv%		Tv%		SHGC% Improvement		SHGC		
OPENNESS		1%	5%	1%	5%	1%	5%	1%	5%	1%	5%	1%	5%	1%	5%	
COLOR	NUMBER															
Pewter	000001	43	37	38	37	19	26	25	23	8	14	24	21	0.46	0.52	
White	000002	66	56	6	6	28	38	68	58	27	37	50	39	0.33	0.42	
Sand	000010	61	54	13	11	26	35	60	54	23	33	45	37	0.36	0.43	
Linen	000020	58	52	17	16	25	32	55	50	20	28	42	34	0.38	0.44	
Mushroom	000055	46	42	34	31	20	27	32	31	10	18	29	24	0.45	0.49	
Suede	000071	39	35	42	40	19	25	20	18	7	13	21	18	0.48	0.53	
Dusk	000015	36	31	50	47	14	22	11	10	2	8	18	16	0.50	0.56	
Stone	000022	52	49	24	24	24	27	44	43	17	20	34	32	0.42	0.45	
Onyx	A00030	34	31	49	47	17	22	11	10	5	9	18	16	0.51	0.56	

Cleaning

Regular light dusting with a feather duster is suggested. A hand-held vacuum with low suction may also be used. When vacuuming, avoid pulling or stretching the fabric. Rigorous vacuuming is not recommended since this could distort the fabric. Alternatively, dirt and debris can be blown away using compressed air or hand-held air dryer on the cool setting.

The fabric performance tests were conducted in accordance with ASTM E891 & ASTM E903-96: Total Solar Transmittance (Ts), Total Solar Reflectance (Rs), Total Solar Absorptance (As), Visible Reflectance (Rv), and Visible Transmission (Tv). Glass performance tests for Solar Heat Gain Coefficient (SHGC) were conducted using the Lawrence Berkeley National Laboratory Window 7.3 NFRC certified software. SHGC % improvement for commercial applications is based on a standard commercial glass makeup of Double Glazing 6 mm / 1/2" air / 6 mm with low E on surface #2. SHGC for residential applications is based on a default residential glass makeup of 3 mm clear glass / 1/2" air / 3 mm clear glass. Results for SHGC were obtained using the center of glass. Acoustical performance was tested in accordance with ASTM C423-09a: NRC is Noise Reduction Coefficient, SAA is Sound Absorption Average. For up-to-date test results, performance specifications and larger samples, contact the Mermet Technical Department at: www.mermetusa.com.

Classifications

Fire	NFPA 701-10 TM#1, California U.S. Title 19 CAN/ULC-S109-03 Small & Large Flame Test.
Bacterial & Fungal Resistance	ASTM G21.
Environmental Benefits	RoHS – Lead Free.
Accoustical Performance	1% NRC: 0.20, SAA: 0.22 5% NRC: 0.15, SAA: 0.14

