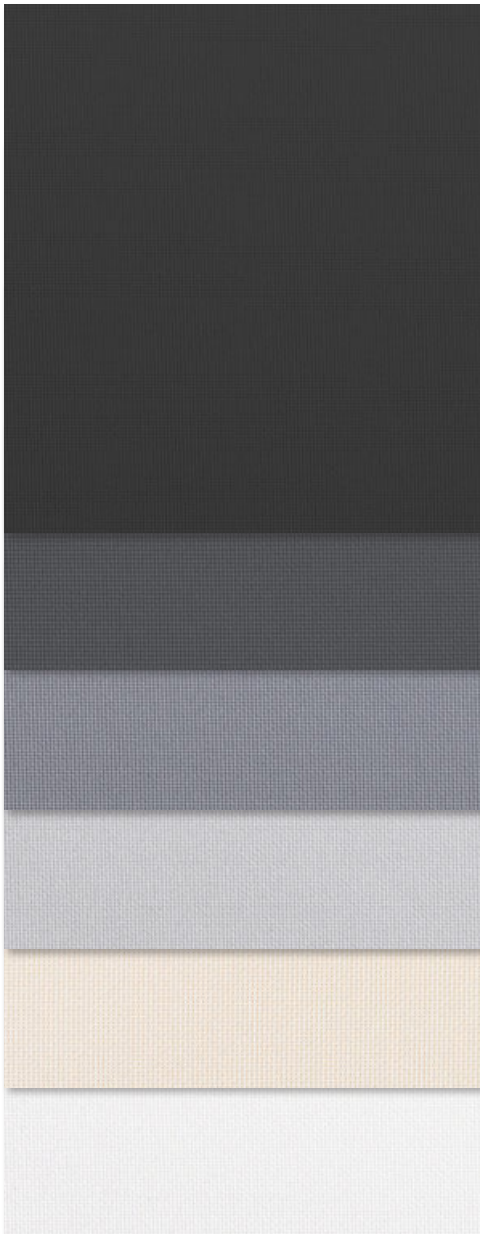




5% Openness



000440
Charcoal

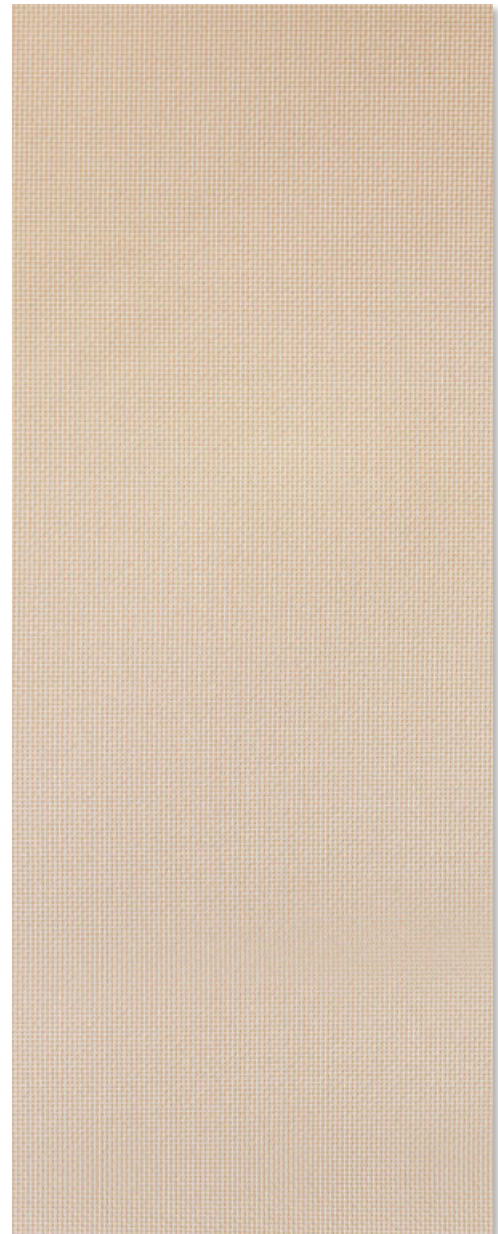
000441
Dark Grey

000349
Light Grey

000348
Pearl

000319
Linen

00B119
White



000410
Sable

Minimal Ingredients. Maximum Performance.

- PVC-Free / Halogen-Free
- Lightweight, 100% fiberglass construction
- Inherently fire resistant
- Red List compliant with HPD available

Digital sample of actual colors may vary slightly.



Specifications 5%

| | |
|-----------------------|-----------------|
| Item number | 011300 |
| Product category | Sustainable |
| Openness factor | 5% |
| Composition | 100% Fiberglass |
| UV Blockage / approx. | 95% |
| Fabric style | Mock Leno Weave |

Dimensions

| | |
|--------------------|--|
| Standard Packaging | Rolls 55 ly (50 lm) |
| Width | 94.5" (240 cm) |
| Weight | 5.10 oz / yd ² (174 g / m ²) ± 5% |
| Thickness | 0.010" (0.24 mm) ± 5% |

Fenestration

Fabric Properties

Fabric & Glass

| COLOR | NUMBER | Thermal Total Solar | | | Optical | | Commercial | Residential |
|------------|--------|---------------------|-----|-----|---------|-----|--------------------|-------------|
| | | Rs% | As% | Ts% | Rv% | Tv% | SHGC % Improvement | SHGC |
| Sable | 000410 | 49 | 24 | 27 | 48 | 24 | 37 | 0.42 |
| Charcoal | 000440 | 6 | 90 | 4 | 6 | 4 | 16 | 0.58 |
| Dark Grey | 000441 | 13 | 79 | 8 | 11 | 6 | 18 | 0.55 |
| Light Grey | 000349 | 35 | 47 | 18 | 31 | 14 | 29 | 0.48 |
| Pearl | 000348 | 55 | 15 | 30 | 54 | 27 | 42 | 0.40 |
| Linen | 000319 | 58 | 11 | 31 | 60 | 30 | 45 | 0.38 |
| White | 00B119 | 61 | 4 | 35 | 65 | 34 | 45 | 0.37 |

Care and Handling

Regular light dusting with a feather duster is suggested. A hand-held vacuum with low suction may also be used. When vacuuming, avoid pulling or stretching the fabric. Rigorous vacuuming is not recommended since this could distort the fabric. Alternatively, dirt and debris can be blown away using compressed air or hand-held air dryer on the cool setting. Alternatively, a dry chemical sponge may also be used for spot cleaning.

Classifications

| | |
|-------------------------------|--|
| Fire | NFPA 701-10 TM#1, California U.S. Title 19, CAN/ULC-S109 Small & Large Scale |
| Bacterial & Fungal Resistance | ASTM E2180, ASTM G21 |
| Environmental Benefits | RoHS - Lead Free GREENGUARD Gold |
| Acoustical | NRC: 0.10, SAA: 0.11 |

The fabric performance tests were conducted in accordance with ASTM E891 & ASTM E903-96: Total Solar Transmittance (Ts), Total Solar Reflectance (Rs), Total Solar Absorbance (As), Visible Reflectance (Rv), and Visible Transmission (Tv). Glass performance tests for Solar Heat Gain Coefficient (SHGC) were conducted using the Lawrence Berkeley National Laboratory Window 7.3 NFRC certified software. SHGC % improvement for commercial applications is based on a standard commercial glass makeup of Double Glazing 6 mm / 1/2" air / 6 mm with low E on surface #2. SHGC for residential applications is based on a default residential glass makeup of 3mm clear glass / 1/2" air / 3mm clear glass. Results for SHGC were obtained using the center of glass. Acoustical performance was tested in accordance with ASTM C423-09a: NRC is Noise Reduction Coefficient, SAA is Sound Absorption Average. For up-to-date test results, performance specifications and larger samples, contact the Mermet Technical Department at: www.mermetusa.com. The Complex Glazing Report is available to fully evaluate glazing and window shade performance.



For additional information, questions, or to request fabric samples, please contact your Draper sales representative or visit <https://request.draperinc.com>



411 S. Pearl St. | Spiceland, IN 47385
765.987.7999 | 800.238.7999
draperinc.com