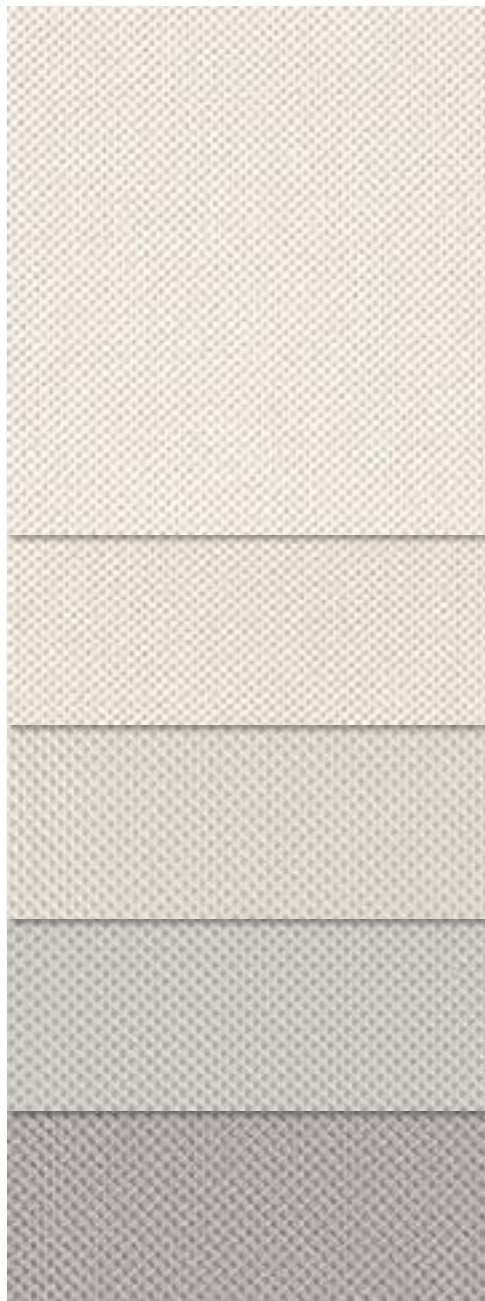




3% Openness



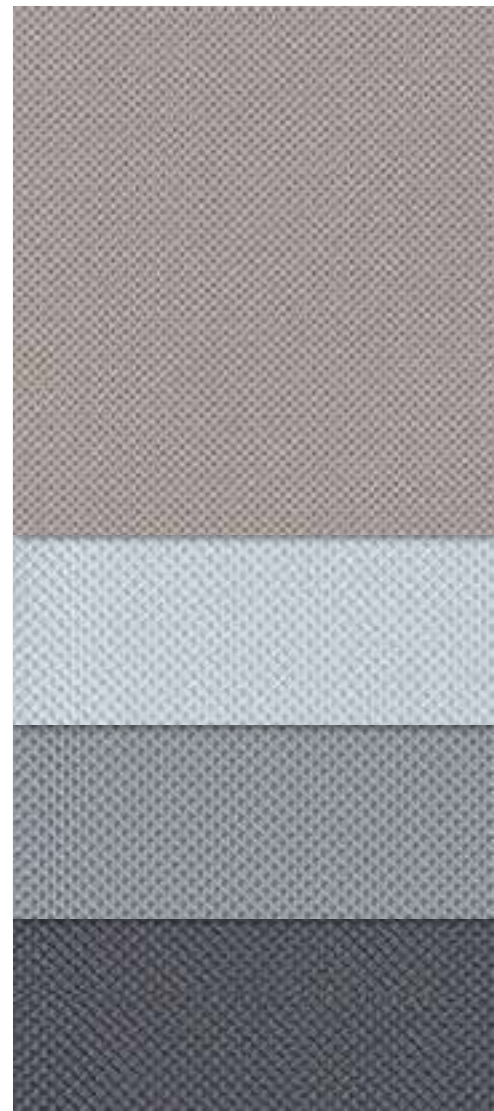
00QS39
Cloud

00QS23
Light

00QS38
Natural

00QS35
Haze

00QS22
Shale



00QS21
Shadow

00QS37
Wind

00QS19
Rain

00QS26
Storm

Zero Waste Designer Shade Fabric

- 100% Recyclable—Zero Waste Product
- PVC-Free
- Cradle to Cradle Certified™ Bronze
- Contains up to 78% Repreve® fibers, made from 100% recycled post-industrial and consumer plastic waste

- Diamond knit pattern for beautiful views
- Made in the USA
- Red List compliant with HPD available

Digital sample of actual colors may vary slightly.



Sun Control Textiles™

Specifications

Item number	003503
Product category	Sustainable
Openness factor	3%
%Polyester / %Recycled content	100 / 78
UV Blockage / approx.	97%
Fabric style	Warp Knit

Dimensions

Standard Packaging	Rolls 50 ly (46 lm)
Width	118" (300 cm)
Weight	8.85 oz / yd ² (300 g / m ²) ± 5%
Thickness	0.029" (0.74 mm) ± 5%

Fenestration

Fabric Properties

Fabric & Glass

COLOR	NUMBER	Thermal Total Solar			Optical		Commercial	Residential
		Rs%	As%	Ts%	Rv%	Tv%	SHGC % Improvement	SHGC
Cloud	00QS39	69	8	23	71	23	53	0.30
Light	00QS23	66	11	23	68	23	50	0.32
Natural	00QS38	63	14	23	63	22	47	0.34
Haze	00QS35	61	17	22	58	19	45	0.35
Shale	00QS22	54	25	21	46	16	37	0.39
Shadow	00QS21	47	32	21	35	14	32	0.43
Wind	00QS37	62	17	21	61	19	47	0.34
Rain	00QS19	51	31	18	38	11	34	0.41
Storm	00QS26	41	45	14	19	5	24	0.46

Cleaning

Regular light dusting with a feather duster is suggested. A hand-held vacuum with low suction may also be used. When vacuuming, avoid pulling or stretching the fabric. Rigorous vacuuming is not recommended since this could distort the fabric. Alternatively, dirt and debris can be blown away using compressed air or hand-held air dryer on the cool setting.

Classifications

Fire	NFPA 701-10 TM#1, California U.S. Title 19 CAN/ULC-S109-03 Small & Large Flame Test.
Bacterial & Fungal Resistance	ASTM E2180, ASTM G21.
Environmental Benefits	RoHS - Lead Free, GREENGUARD Gold, Cradle to Cradle Certified™ - Bronze.
Acoustical	NRC: 0.20, SAA: 0.21

The fabric performance tests were conducted in accordance with ASTM E891 & ASTM E903-96: Total Solar Transmittance (Ts), Total Solar Reflectance (Rs), Total Solar Absorptance (As), Visible Reflectance (Rv), and Visible Transmission (Tv). Glass performance tests for Solar Heat Gain Coefficient (SHGC) were conducted using the Lawrence Berkeley National Laboratory Window NFRC certified software. SHGC % improvement for commercial applications is based on a standard commercial glass makeup of Double Glazing 6 mm / ½ air / 6 mm with low E on surface #2. SHGC for residential applications is based on a default residential glass makeup of 3 mm clear glass / ½ air / 3 mm clear glass. Results for SHGC were obtained using the center of glass. Acoustical performance was tested in accordance with ASTM C423-09a: NRC is Noise Reduction Coefficient, SAA is Sound Absorption Average. For up-to-date test results, performance specifications and larger samples, contact the Mermet Technical Department at: www.mermetusa.com.

