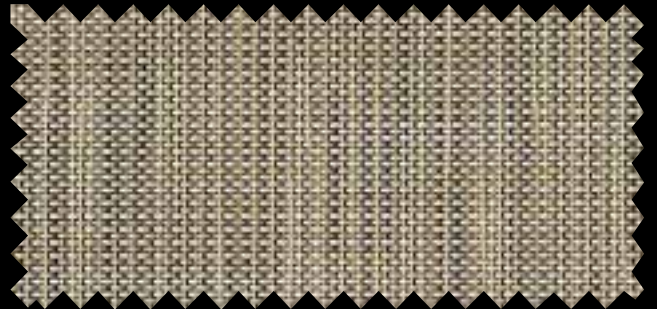
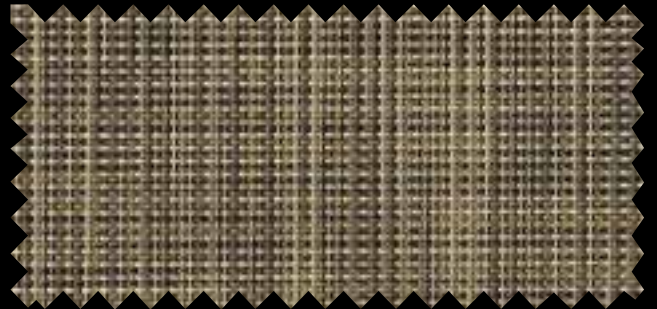




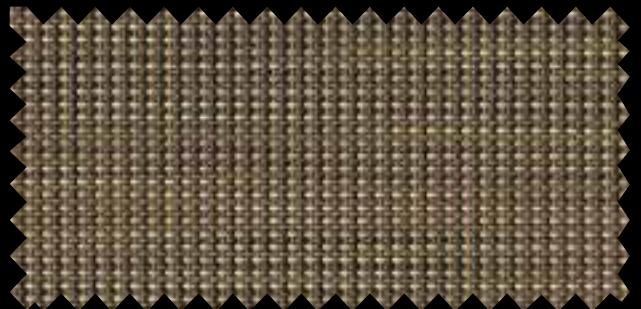
Coconut



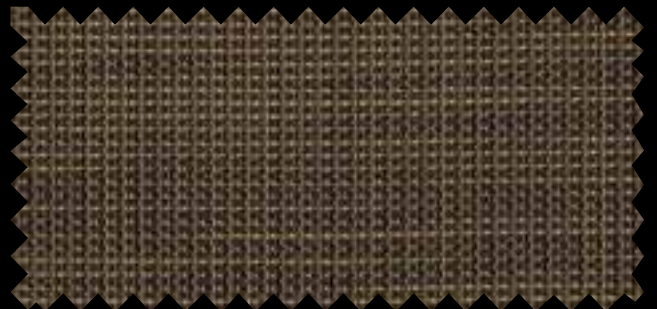
Coral



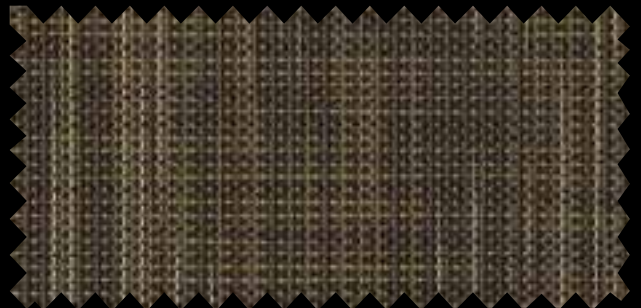
Rattan



Toast



Toffee



Walnut



Wheat

SunTex® 90 Design Fabric

Durability and Design for DIY

SunTex 90 Design combines a rich, design-oriented look with the same weave and performance characteristics of traditional SunTex 90 fabric. Providing both sun protection and daytime privacy, SunTex 90 Design offers stylish options to meet exterior sun control needs at a practical price point.

Exterior Shading and Energy Saving

SunTex exterior shading fabric is pet resistant, mildew and fade resistant, and needs only an occasional cleaning with mild soap and water. It is perfect for any exterior application. What you may not know about SunTex 90 Design is that it can help with energy savings by reducing the heating effect of the sun's rays.

SunTex® 90 Design Fabric

| | | | |
|-------------------|--|------------------|-------------------|
| STANDARD WIDTH | 96" (243.8 cm) | FABRIC THICKNESS | 0.039" (0.991 mm) |
| ROLL LENGTH | 100' (30.48 m) | OPENNESS FACTOR | Approximately 10% |
| COMPOSITION | 31% Polyester, 69% Vinyl on Polyester | UV BLOCKAGE | Approximately 90% |
| MESH WEIGHT | 17.2 oz/yd ² (583.18 g/m ²) | | |
| BREAKING STRENGTH | 480 Warp, 340 Fill (lb) | | |
| STIFFNESS | 400 Warp, 310 Fill (mg) | | |

SPECIFICATIONS

| | |
|--------------------------------|--|
| FIRE CLASSIFICATION | California Technical Bulletin 117, NFPA 101 (Class A Rating), IBC Section 803.1 (Class A Rating), CAN/ULC S-109 (large scale), CFR 49V 571.302 (FMVSS 302) and ASTM E-662. |
| BACTERIA AND FUNGAL RESISTANCE | ASTM E 2180, ASTM G21, ASTM G22; includes Microban antimicrobial additives. |
| ENVIRONMENTAL CERTIFICATION | Certified to GREENGUARD and GREENGUARD Gold standards for low chemical emissions into indoor air during product usage. |
| LEAD FREE | RoHS/Directive 2002/95/EC, US Consumer Product Safety Commission Section 101, ANSI/WCMA A 100.1-2007 for lead content and REACH (EC 1907/2006) compliant. |
| STANDARD USES | Exterior shades. |
| WARRANTY | 10-year exterior. |

TECHNICAL DATA

| COLOR | SOLAR OPTICAL PROPERTIES* | | | | SHGC/G VALUE g-tot (glass & blind)* | | | | | |
|---------|---------------------------|-------|-------|-------|-------------------------------------|-----------|-----------|----------------|-----------|-----------|
| | TS% | RS% | AS% | TV% | Single | | | Insulating 1HA | | |
| | | | | | 1/8 CL | 1/4 CL | 1/4 HA | 1/2 CL | 1 CL | 1 HA |
| Coconut | 18/8 | 44/60 | 38/32 | 23/23 | 0.20/0.08 | 0.20/0.08 | 0.18/0.08 | 0.17/0.05 | 0.16/0.05 | 0.15/0.05 |
| Coral | 16/5 | 37/48 | 47/47 | 22/22 | 0.19/0.08 | 0.19/0.08 | 0.17/0.08 | 0.16/0.05 | 0.16/0.05 | 0.14/0.05 |
| Rattan | 14/3 | 22/31 | 64/66 | 21/21 | 0.19/0.09 | 0.19/0.09 | 0.17/0.09 | 0.16/0.06 | 0.16/0.06 | 0.14/0.06 |
| Toast | 13/2 | 19/26 | 68/72 | 21/21 | 0.18/0.09 | 0.18/0.09 | 0.17/0.09 | 0.16/0.06 | 0.15/0.06 | 0.13/0.06 |
| Toffee | 12/2 | 11/18 | 77/80 | 20/20 | 0.18/0.10 | 0.18/0.10 | 0.17/0.10 | 0.15/0.06 | 0.15/0.06 | 0.13/0.06 |
| Walnut | 13/2 | 11/19 | 76/79 | 20/20 | 0.19/0.09 | 0.19/0.09 | 0.18/0.09 | 0.16/0.06 | 0.16/0.06 | 0.14/0.06 |
| Wheat | 14/4 | 27/40 | 59/56 | 21/21 | 0.18/0.08 | 0.18/0.08 | 0.17/0.08 | 0.16/0.05 | 0.15/0.05 | 0.13/0.05 |

* Properties and Values are represented 30/75, 30 Degree Profile Angle / 75 Degree Profile Angle, Fabrics Installed Externally.



PRODUCT CERTIFIED FOR
LOW CHEMICAL EMISSIONS
UL.COM/GG
UL 2818



MIF Seal of Approval



411 S. Pearl St. | Spiceland, IN 47385
765.987.7999 | 800.238.7999
draperinc.com

*TS - Solar Transmittance, RS - Solar Reflectance, AS - Solar Absorptance, TV - Visual Transmittance *SHGC = Solar Heat Gain Coefficient *1/4 CL = 1/4" Clear Glass, 1 HA = 1" Heat Absorbing Glass *Fabrics Installed Internally, Zero-Degree Profile Angle *Solar Heat Gain Coefficient (SHGC) shown calculated according to Office of Building Technology, State and Community Programs, Energy Efficiency and Renewable Energy, U.S. Department of Energy's definition of SHGC. SHGC represents the percentage of solar heat gain that is transmitted to the interior through the glass and shading system. If you are using glass whose performance is listed in terms of SC, you may convert to SHGC by multiplying the SC by 0.87.



© SheerWeave is a registered trademark of PHIFER INCORPORATED.
© MICROBAN is a registered trademark of Microban Products Company.
TM UL, the UL logos and the UL mark are trademarks of UL LLC.
© PHIFER INCORPORATED V18