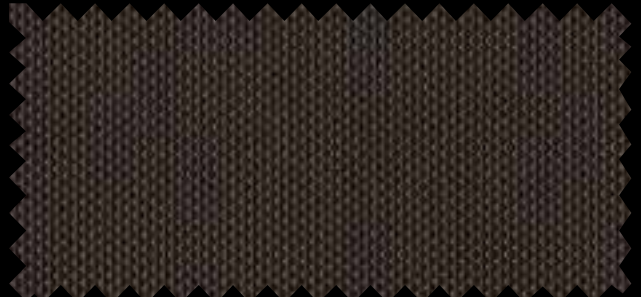
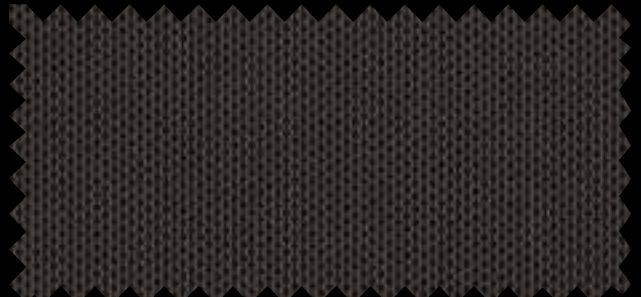


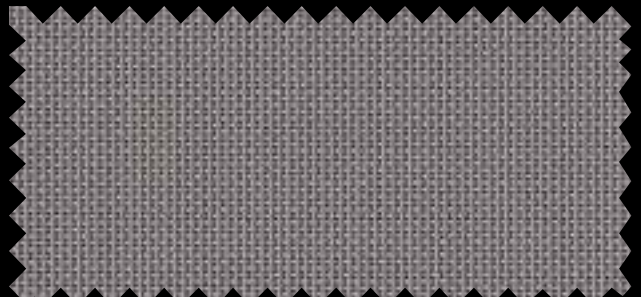
Beige



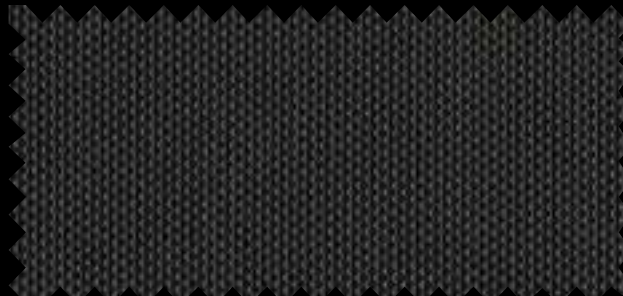
Brown



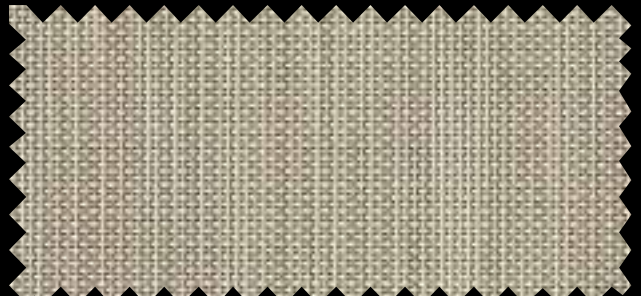
Dark Bronze



Grey



Black



Stucco

SunTex® 80/90 Fabric

Exterior Solar Screens and Sun Shades

SunTex is a unique woven mesh that can block 80-90% of the sun's hot rays before they enter your window. Perfect for outdoor blinds, exterior solar screens and sun shading applications, SunTex 80/90 fabrics can be used for your window screens, door screens, patio, motorized shade, patio shades, or canopy.

Exterior Shading and Energy Saving

SunTex exterior shading fabric is made of strong vinyl-coated polyester and is pet resistant. SunTex is mildew and fade resistant and needs only an occasional cleaning with mild soap and water. What you may not know about SunTex 80/90 is that it can help with energy savings by reducing the heating effect of the sun's rays.

SunTex® 80/90 Fabric

STANDARD WIDTH	80: 36" to 96" (91.4 cm to 243.8 cm) 90: 36" to 96" (91.4 cm to 243.8 cm); 120" (304.8 cm) in all colors except Grey	FABRIC THICKNESS	80: 0.040" (1.016 mm) 90: 0.039" (0.991 mm)
ROLL LENGTH	80 and 90: 100' (30.48 m)	OPENNESS FACTOR	80: Approximately 25% 90: Approximately 10%
COMPOSITION	80 and 90: 31% Polyester, 69% Vinyl on Polyester	UV BLOCKAGE	80: Approximately 75% 90: Approximately 90%
MESH WEIGHT	80: 13.5 oz/yd2 (457.73 g/m2) 90: 17.2 oz/yd2 (583.18 g/m2)		
BREAKING STRENGTH	80: 400 Warp, 380 Fill (lb) 90: 480 Warp, 340 Fill (lb)		
STIFFNESS	80: 500 Warp, 300 Fill (mg) 90: 400 Warp, 310 Fill (mg)		

SPECIFICATIONS

FIRE CLASSIFICATION	80: California Technical Bulletin 117, NFPA 101 (Class B Rating), IBC Section 803.1.1 (Class B Rating), CAN/ULC-S 109-03 (large scale) and CFR 49V 571.302 (FMVSS 302). 90: NFPA 101 (Class A Rating), IBC Section 803.1.1 (Class A Rating), CFR 49V 571.302 (FMVSS 302), California Technical Bulletin 117, CAN/ULC S-109 (large scale) and ASTM E-662.
BACTERIA AND FUNGAL RESISTANCE	ASTM E 2180, ASTM G21, ASTM G22; includes Microban antimicrobial additives.
ENVIRONMENTAL CERTIFICATION	Certified to GREENGUARD and GREENGUARD Gold standards for low chemical emissions into indoor air during product usage.
LEAD FREE	RoHS/Directive 2002/95/EC, US Consumer Product Safety Commission Section 101, ANSI/WCMA A 100.1-2007 for lead content and REACH (EC 1907/2006) compliant.
STANDARD USES	Exterior shades.
WARRANTY	10-year exterior.



TECHNICAL DATA

COLOR	SOLAR OPTICAL PROPERTIES*				SHGC/G VALUE g-tot (glass & blind)*						
	TS%	RS%	AS%	TV%	Single			Insulating 1HA			
					1/8 CL	1/4 CL	1/4 HA	1/2 CL	1 CL	1 HA	
COLOR 80											
Beige	31/15	30/36	39/49	39/39	0.32/0.14	0.31/0.14	0.30/0.14	0.28/0.09	0.27/0.09	0.23/0.10	
Black	26/8	4/6	70/86	37/37	0.30/0.13	0.30/0.13	0.28/0.13	0.26/0.09	0.25/0.09	0.22/0.09	
Brown	26/8	4/7	70/85	37/37	0.30/0.13	0.30/0.13	0.28/0.13	0.26/0.09	0.25/0.09	0.22/0.09	
Grey	26/12	23/27	51/61	36/36	0.29/0.13	0.28/0.13	0.26/0.13	0.24/0.09	0.23/0.09	0.21/0.09	
Stucco	30/18	38/42	32/40	36/36	0.30/0.15	0.30/0.15	0.28/0.15	0.26/0.09	0.25/0.09	0.22/0.10	
Dark Bronze	26/8	5/10	69/82	38/38	0.30/0.13	0.30/0.13	0.28/0.13	0.26/0.09	0.25/0.09	0.22/0.09	
COLOR 90											
Beige	16/7	36/37	48/56	20/20	0.19/0.10	0.19/0.10	0.18/0.10	0.16/0.06	0.16/0.06	0.14/0.07	
Black	12/2	4/6	84/92	19/19	0.19/0.10	0.19/0.10	0.18/0.10	0.16/0.07	0.15/0.07	0.14/0.07	
Brown	12/2	5/7	83/91	18/18	0.19/0.10	0.19/0.10	0.18/0.10	0.16/0.07	0.15/0.07	0.14/0.07	
Grey	13/5	27/27	60/68	18/18	0.17/0.10	0.17/0.10	0.16/0.10	0.15/0.06	0.14/0.06	0.13/0.07	
Stucco	17/10	44/42	39/48	20/20	0.19/0.10	0.19/0.10	0.17/0.10	0.16/0.07	0.16/0.07	0.14/0.07	
Dark Bronze	12/2	5/8	83/90	18/18	0.19/0.10	0.19/0.10	0.18/0.10	0.16/0.07	0.15/0.07	0.14/0.07	

* Properties and Values are represented 30/75, 30 Degree Profile Angle / 75 Degree Profile Angle, Fabrics Installed Externally.

*TS - Solar Transmittance, RS - Solar Reflectance, AS - Solar Absorptance, TV - Visual Transmittance *SHGC = Solar Heat Gain Coefficient *1/4 CL = 1/4" Clear Glass, 1 HA = 1" Heat Absorbing Glass *Fabrics Installed Internally, Zero-Degree Profile Angle *Solar Heat Gain Coefficient (SHGC) shown calculated according to Office of Building Technology, State and Community Programs, Energy Efficiency and Renewable Energy, U.S. Department of Energy's definition of SHGC. SHGC represents the percentage of solar heat gain that is transmitted to the interior through the glass and shading system. If you are using glass whose performance is listed in terms of SC, you may convert to SHGC by multiplying the SC by 0.87.



© SheerWeave is a registered trademark of PHIFER INCORPORATED.
 © MICROBAN is a registered trademark of Microban Products Company.
 TM UL, the UL logos and the UL mark are trademarks of UL LLC.
 © PHIFER INCORPORATED V18



411 S. Pearl St. | Spiceland, IN 47385
 765.987.7999 | 800.238.7999
 draperinc.com