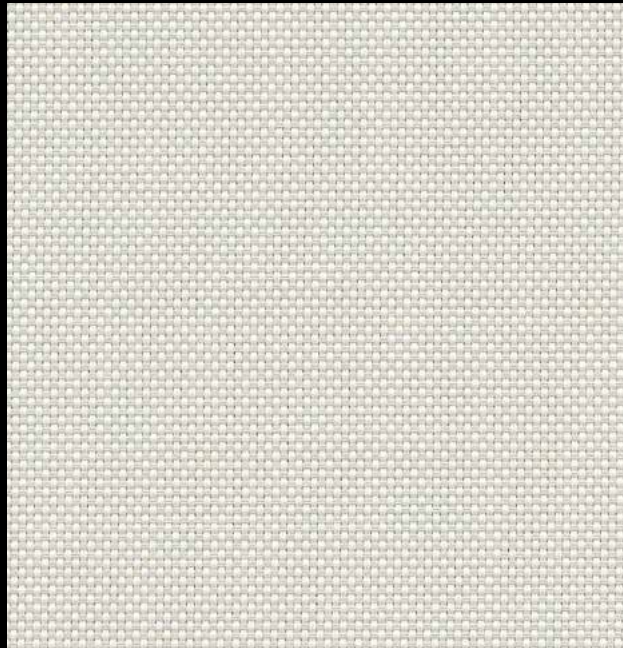


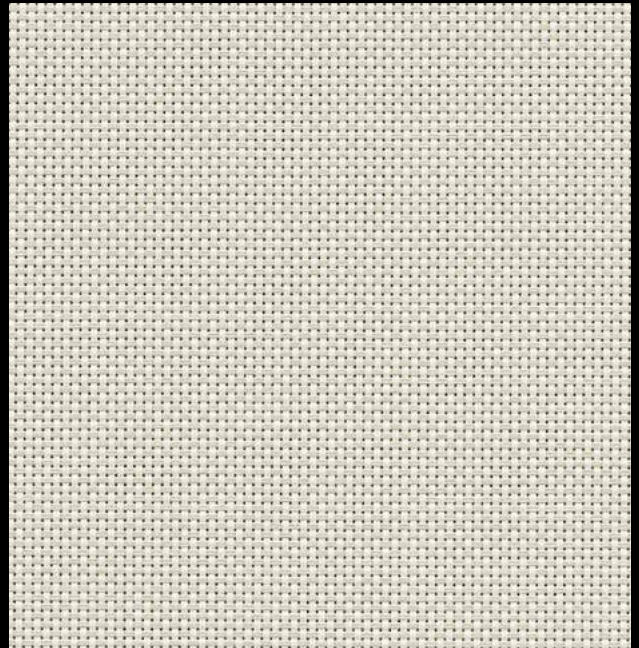
BASIC 3% / 5%

Basic 3%
(3% open)



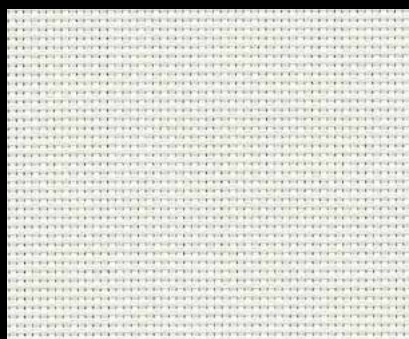
P04 White / Bone

Basic 5%
(5% open)

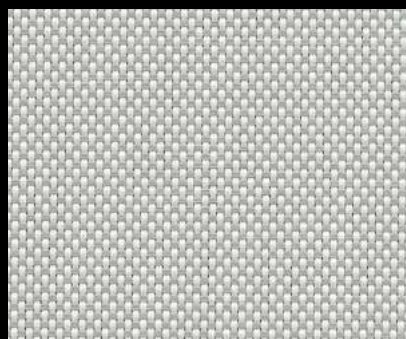


P04 White / Bone

All colors shown available in 3% and 5% openness.



BASIC 3% P02 White



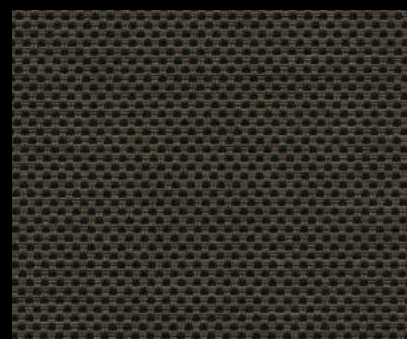
BASIC 3% P05 White / Platinum



BASIC 3% V22 Charcoal / Gray



BASIC 3% V21 Charcoal



BASIC 3% V24 Charcoal / Chestnut

Sheerweave® Style Basic 3% / 5%

SheerWeave BASIC is the latest in innovative sun control fabric development. With all the benefits, certifications, and technical specifications you have come to expect from SheerWeave, but uniquely designed for the demanding and competitive commercial market, SheerWeave BASIC is an ideal choice for your spec-driven projects. A more robust fiberglass core yarn gives SheerWeave BASIC the added durability high traffic areas and public spaces require. Suitable for all types of interior window shade applications, SheerWeave BASIC is an economical alternative to traditional solar screen fabrics. SheerWeave BASIC fabrics are also suitable for exterior roller shades.

SHEERWEAVE STYLE Basic 3% / 5%

STANDARD WIDTH	Basic 3% / 5%: 98" (248.9 cm)	FABRIC THICKNESS	Basic 3%: 0.025 in (0.64 mm)	Basic 5%: 0.022 in (0.56 mm)
ROLL LENGTH	Basic 3% / 5%: 30 Linear Yards (27.4 lm)	OPENNESS FACTOR	Basic 3%: Approximately 3%	Basic 5%: Approximately 5%
COMPOSITION	Basic 3% / 5%: 38% Fiberglass, 62% Vinyl on Fiberglass	UV BLOCKAGE	Basic 3%: Approximately 97%	Basic 5%: Approximately 95%
MESH WEIGHT	Basic 3%: 16.4 oz/yd ² (556 g/m ²) Basic 5%: 14.1 oz/yd ² (478 g/m ²)	ACOUSTICAL VALUE	Basic 3%: NRC 0.60 / SAA 0.60	Basic 5%: NRC 0.10 / SAA 0.08
		ACOUSTICAL PERFORMANCE	NRC (Noise Reduction Coefficient) and SAA (Sound Absorption Average) tested in accordance with ASTM C423-09a.	

SPECIFICATIONS

FIRE CLASSIFICATION	California U.S. Title 19 (small scale), NFPA 701 TM#1 (small scale), NFPA 101 (Class A Rating), IBC Section 803.1.1 (Class A Rating), BS 5867 Part 2 Type B Performance, CAN/ULC-S 109 (large and small scale), NFPA 701 TM#2 (large scale), CAN/CGSB2-4.162-M80.
BACTERIA AND FUNGAL RESISTANCE	ASTM E 2180, ASTM G21, ASTM G22, AATCC30 Part 3, ASTM D 3273, GREENGUARD Mold and Bacteria Standard ASTM 6329; includes Microban antimicrobial additives.
ENVIRONMENTAL CERTIFICATION	Certified to GREENGUARD and GREENGUARD Gold standards for low chemical emissions into indoor air during product usage.
SAFE USE	RoHS/Directive 2002/95/EC, US Consumer Product Safety Commission Section 101, ANSI/WCMA A 100.1-2007 for lead content and REACH (EC 1907/2006) compliant.
STANDARD USES	Roller shades, Roman shades, and panel tracks.
WARRANTY	10-year interior, 5-year exterior.

TECHNICAL DATA

		SOLAR OPTICAL PROPERTIES								SHGC/G VALUE g-tot (glass & blind)			
		TS%		RS%		AS%		TV%		Single 1/4 CL		Insulating 1HA	
	OPENNESS	3%	5%	3%	5%	3%	5%	3%	5%	3%	5%	3%	5%
COLOR	NUMBER												
White	P02	15	19	64	68	21	13	16	17	0.29	0.29	0.22	0.22
White / Bone	P04	12	16	58	60	30	24	11	14	0.32	0.32	0.23	0.23
White / Platinum	P05	8	11	50	53	42	36	8	11	0.36	0.36	0.25	0.25
Charcoal	V21	1	6	4	4	95	90	2	6	0.60	0.61	0.37	0.37
Charcoal / Gray	V22	1	7	8	9	91	84	2	7	0.57	0.58	0.36	0.36
Charcoal / Chestnut	V24	1	7	5	6	94	87	1	8	0.58	0.60	0.37	0.37



411 S. Pearl St. | Spiceland, IN 47385
765.987.7999 | 800.238.7999
draperinc.com

*TS - Solar Transmittance, RS - Solar Reflectance, AS - Solar Absorptance, TV - Visual Transmittance *SHGC = Solar Heat Gain Coefficient *1/4 CL = 1/4" Clear Glass, 1 HA = 1" Heat Absorbing Glass *Fabrics Installed Internally, Zero-Degree Profile Angle *Solar Heat Gain Coefficient (SHGC) shown calculated according to Office of Building Technology, State and Community Programs, Energy Efficiency and Renewable Energy, U.S. Department of Energy's definition of SHGC. SHGC represents the percentage of solar heat gain that is transmitted to the interior through the glass and shading system. If you are using glass whose performance is listed in terms of SC, you may convert to SHGC by multiplying the SC by 0.87.



© SheerWeave is a registered trademark of PHIFER INCORPORATED.
© MICROBAN is a registered trademark of Microban Products Company.
TM UL, the UL logos and the UL mark are trademarks of UL LLC.
© PHIFER INCORPORATED V18 3028204