

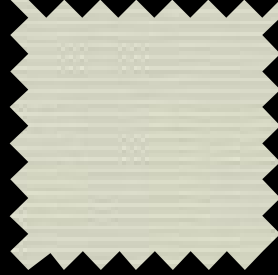
STYLE SW7500 BLACKOUT FABRIC



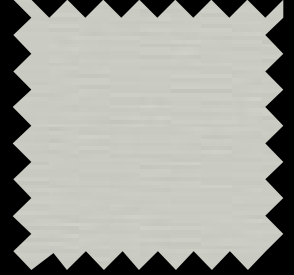
7500 R13  
Ice



7500 R39  
Cloud



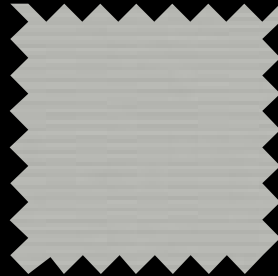
7500 R40  
Porcelain



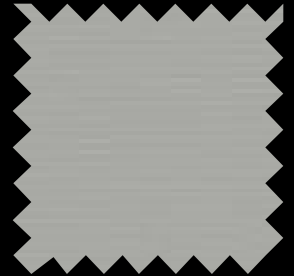
7500 R41  
Limestone



7500 R97  
Mist



7500 R42  
Nimbus



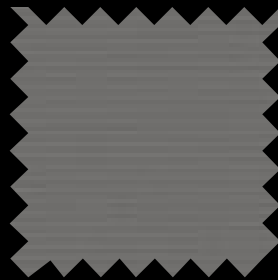
7500 R43  
Tundra



7500 R17  
Dune



7500 R19  
Stone



7500 R20  
Odyssey



7500 R21  
Orient



7500 R22  
Midnight



7500 R99  
Midnight x2



7500 S97  
Orient x2

# Sheerweave® Style SW7500 Blackout Fabric

This attractive blackout fabric maintains high quality at an economical price. Style 7500 is presented in a classic range of neutral colors with a unique PVC-free composition and is ideal for commercial applications. SheerWeave Style 7500 is an excellent option when total light blockage is needed and all Style 7500 colors have an off-white backing.

## SHEERWEAVE STYLE 7500 Blackout

STANDARD WIDTH	118" (300cm)	FABRIC THICKNESS	0.016 in (0.40 mm)
ROLL LENGTH	30 Linear Yards (27.4 lm)	OPENNESS FACTOR	Opaque
COMPOSITION	100% Polyester with Acrylic Coating	ACOUSTICAL VALUE	NRC 0.00 / SAA 0.03
MESH WEIGHT	12.14 oz/yd <sup>2</sup> (412 g/m <sup>2</sup> )	ACOUSTICAL PERFORMANCE	NRC (Noise Reduction Coefficient) and SAA (Sound Absorption Average) tested in accordance with ASTM C423-09a.

## SPECIFICATIONS

FIRE CLASSIFICATION	California U.S. Title 19 (small scale), NFPA 101 (Class A Rating), NFPA 701 TM#1 (small scale), BS 5867 Part 2 Type B Performance, CAN/ULC-S 109 (large and small scale), IBC Section 803.1.1 (Class A Rating), CAN/CGSB 2-4.162-M80.
BACTERIA AND FUNGAL RESISTANCE	ASTM E 2180 and ASTM G21
ENVIRONMENTAL CERTIFICATION	Certified to GREENGUARD and GREENGUARD Gold standards for low chemical emissions into indoor air during product usage.
SAFE USE	RoHS/Directive 2002/95/EC, US Consumer Product Safety Commission Section 101 and ANSI/WCMA A 100.1-2007 for lead content.
STANDARD USES	Roller shades & panel tracks.
UV PROTECTION	Seal of Approval by the Melanoma International Foundation (MIF) for effectiveness in preventing sun damage to the skin or eyes.
WARRANTY	5-year interior.

## STYLE 7500 BLACKOUT

CODE / COLOR	COLOR	SOLAR OPTICAL PROPERTIES				SHGC/G VALUE g-tot (glass & blind)	
		TS%	RS%	AS%	TV%	Single	Insulating
<b>Room-side</b>	<b>Street-side</b>					1/4 CL	1 HA
R13 Ice	Off-white	0	68	32	0	0.24	0.20
R39 Cloud	Off-white	0	68	32	0	0.24	0.20
R40 Porcelain	Off-white	0	68	32	0	0.24	0.20
R41 Limestone	Off-white	0	68	32	0	0.24	0.20
R97 Mist	Off-white	0	68	32	0	0.24	0.20
R42 Nimbus	Off-white	0	68	32	0	0.24	0.20
R43 Tundra	Off-white	0	68	32	0	0.24	0.20
R17 Dune	Off-white	0	68	32	0	0.24	0.20
R19 Stone	Off-white	0	68	32	0	0.24	0.20
R20 Odyssey	Off-white	0	68	32	0	0.24	0.20
R21 Orient	Off-white	0	68	32	0	0.24	0.20
R22 Midnight	Off-white	0	68	32	0	0.24	0.20
R99 Midnight x2	Midnight	0	68	32	0	0.24	0.20
S97 Orient x2	Orient	0	68	32	0	0.24	0.20



PRODUCT CERTIFIED FOR  
LOW CHEMICAL EMISSIONS  
UL.COM/IGG  
UL 2818



MIF Seal of  
Approval



411 S. Pearl St. | Spiceland, IN 47385  
765.987.7999 | 800.238.7999  
draperinc.com



© SheerWeave is a registered trademark of PHIFER INCORPORATED.  
© MICROBAN is a registered trademark of Microban Products Company.  
TM UL, the UL logos and the UL mark are trademarks of UL LLC.  
© PHIFER INCORPORATED V18 3033833

\*TS - Solar Transmittance, RS - Solar Reflectance, AS - Solar Absorptance, TV - Visual Transmittance \*SHGC = Solar Heat Gain Coefficient \*1/4 CL = 1/4" Clear Glass, 1 HA = 1" Heat Absorbing Glass \*Fabrics Installed Internally, Zero-Degree Profile Angle \*Solar Heat Gain Coefficient (SHGC) shown calculated according to Office of Building Technology, State and Community Programs, Energy Efficiency and Renewable Energy, U.S. Department of Energy's definition of SHGC. SHGC represents the percentage of solar heat gain that is transmitted to the interior through the glass and shading system. If you are using glass whose performance is listed in terms of SC, you may convert to SHGC by multiplying the SC by 0.87.