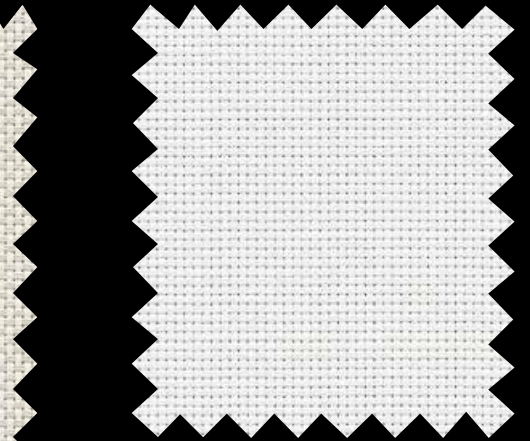
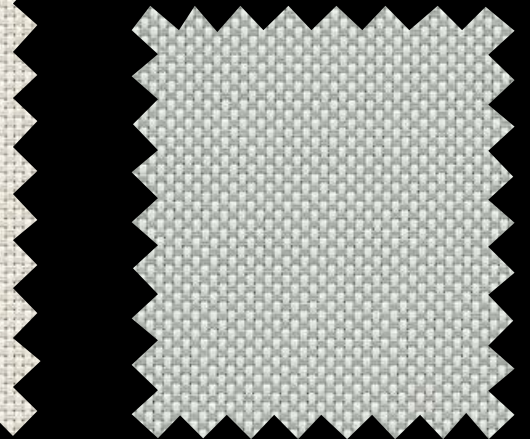




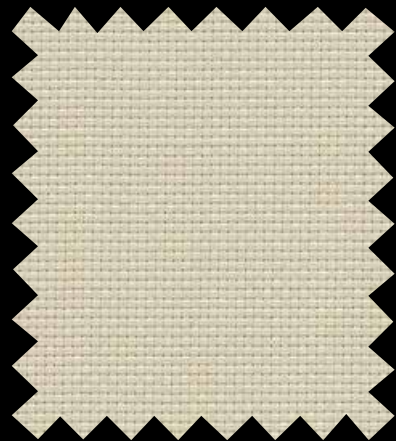
SW7100 P04 White / Bone



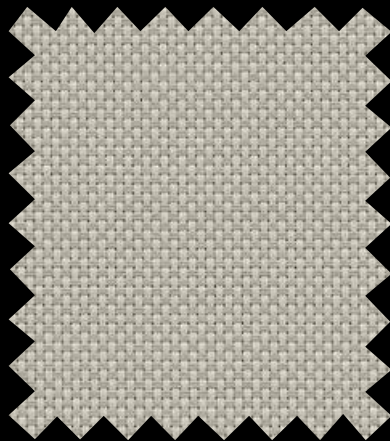
SW7100 P02 White



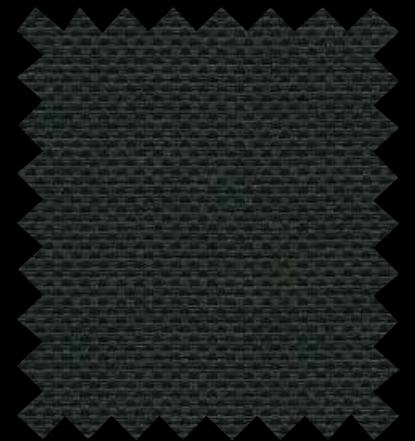
SW7100 P05 White / Platinum



SW7100 Q05 Bone



SW7100 Q06 Bone / Platinum



SW7100 V21 Charcoal

Sheerweave® Style SW7100 Blackout Fabric

Style 7100 is a durable laminated blackout fabric that combines the woven texture of our Style 2000 as the face fabric with a durable vinyl backing to achieve total light blockage. Style 7100 coordinates easily with other SheerWeave fabrics when multi-purpose shades are needed. All Style 7100 colors have a white backing.

SHEERWEAVE STYLE SW7100 Blackout

STANDARD WIDTH	63" and 96" (160 cm and 243.8 cm).	FABRIC THICKNESS	0.025 in (0.64 mm).
ROLL LENGTH	30 Linear Yards (27.4 lm).	OPENNESS FACTOR	Opaque
COMPOSITION	Vinyl-Coated Fiberglass Fabric Laminated with a Two-Ply 100% PVC Blackout Film	ACOUSTICAL VALUE	NRC 0.05 / SAA 0.03
MESH WEIGHT	21.6 oz/yd ² (732 g/m ²)	ACOUSTICAL PERFORMANCE	NRC (Noise Reduction Coefficient) and SAA (Sound Absorption Average) tested in accordance with ASTM C423-09a.

SPECIFICATIONS

FIRE CLASSIFICATION	NFPA 701 TM#1 (small scale), NFPA 701 TM#2 (large scale), BS 5867 Part 2 Type B Performance, CAN/ULC-S 109 (large and small scale), NFPA 101 (Class B Rating), IBC Section 803.1.1 (Class B Rating).
BACTERIA AND FUNGAL RESISTANCE	ASTM E 2180, ASTM G21, AATCC30 Part 3, ASTM D 3273, ASTM G22, GREENGUARD Mold and Bacteria Standard ASTM 6329; Style 2000 face includes Microban antimicrobial additives.
ENVIRONMENTAL CERTIFICATION	Certified to GREENGUARD and GREENGUARD Gold standards for low chemical emissions into indoor air during product usage.
LEAD FREE	RoHS/Directive 2002/95/EC, US Consumer Product Safety Commission Section 101, ANSI/WCMA A 100.1-2007 for lead content and REACH (EC 1907/2006) compliant.
STANDARD USES	Roller shades and panel tracks.
WARRANTY	10-year interior.

TECHNICAL DATA

COLOR	NUMBER	SOLAR OPTICAL PROPERTIES		SHGC/G VALUE g-tot (glass & blind)	
		RS%	AS%	Single 1/4 CL	Insulating 1HA
White	P02	71	29	0.23	0.19
White / Bone	P04	71	29	0.23	0.19
White / Platinum	P05	71	29	0.23	0.19
Bone	Q05	71	29	0.23	0.19
Bone / Platinum	Q06	71	29	0.23	0.19
Charcoal	V21	71	29	0.23	0.19



PRODUCT CERTIFIED FOR LOW CHEMICAL EMISSIONS
UL.COM/GG
UL 2818



PROTECTION THAT LIVES ON
MICROBAN



MIF Seal of Approval



411 S. Pearl St. | Spiceland, IN 47385
765.987.7999 | 800.238.7999
draperinc.com

*TS - Solar Transmittance, RS - Solar Reflectance, AS - Solar Absorptance, TV - Visual Transmittance *SHGC = Solar Heat Gain Coefficient *1/4 CL = 1/4" Clear Glass, 1 HA = 1" Heat Absorbing Glass *Fabrics Installed Internally, Zero-Degree Profile Angle *Solar Heat Gain Coefficient (SHGC) shown calculated according to Office of Building Technology, State and Community Programs, Energy Efficiency and Renewable Energy, U.S. Department of Energy's definition of SHGC. SHGC represents the percentage of solar heat gain that is transmitted to the interior through the glass and shading system. If you are using glass whose performance is listed in terms of SC, you may convert to SHGC by multiplying the SC by 0.87.

PHIFER
INCORPORATED

® SheerWeave is a registered trademark of PHIFER INCORPORATED.
® MICROBAN is a registered trademark of Microban Products Company.
TM UL, the UL logos and the UL mark are trademarks of UL LLC.
© PHIFER INCORPORATED V18 3027100