

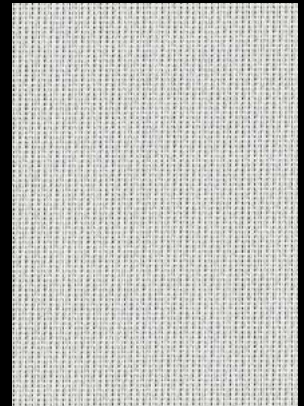
STYLE SW2701 / 2703 / 2705 / 2710

Style SW2701 (1% open)
P12 Oyster

Style SW2703 (3% open)
P12 Oyster

Style SW2705 (5% open)
P12 Oyster

Style SW2710 (10% open)
P12 Oyster



SW2701 P13
Oyster/Beige

SW2701 P14
Oyster/Pearl Gray

SW2701 P28
Oyster/Charcoal

SW2701 P91
Oyster/Pewter

SW2701 P92
Oyster/Chestnut

SW2705 V21
Charcoal

SW2705 V22
Charcoal/Gray

SW2705 V64
Charcoal/Slate

SW2705 V65
Charcoal/Taupe

SW2705 V66
Charcoal/Brown

These fabrics have Face and Back sides - lift each sample for the Back view

Colors may appear different based on openness factor.

* Oyster / Pearl Gray not available in 10%

Sheerweave® Style SW2701 / 2703 / 2705 / 2710

Styles 2701, 2703, 2705 and 2710 are woven from a unique twill pattern that displaces the individual yarns to create a two-sided fabric for maximum performance in heat reduction, glare reduction and improved visibility. Style 2701/2703/2705/2710 can also be used in exterior roller shades.

SHEERWEAVE STYLE SW2701 / 2703 / 2705 / 2710

STANDARD WIDTH	2701, 2703 and 2705: 63", 98" and 126" (160 cm, 248.9 cm and 320 cm). 2710: 63" and 98" (160 cm and 248.9 cm).	FABRIC THICKNESS	2701: 0.027 in (0.66 mm) 2703: 0.028 in (0.71 mm)	2705: 0.025 in (0.64 mm) 2710: 0.023 in (0.58 mm)	
ROLL LENGTH	30 Linear Yards (27.4 lm).	OPENNESS FACTOR	2701: Approximately 1% 2703: Approximately 3%	2705: Approximately 5% 2710: Approximately 10%	
COMPOSITION	2701 and 2703: 36% Fiberglass, 64% Vinyl on Fiberglass. 2705 and 2710: 34% Fiberglass, 66% Vinyl on Fiberglass.	UV BLOCKAGE	2701: Approximately 99% 2703: Approximately 97%	2705: Approximately 95% 2710: Approximately 90%	
MESH WEIGHT	2701: 14.6 oz/yd ² (495 g/m ²) 2703: 14.0 oz/yd ² (475 g/m ²)	2705: 11.8 oz/yd ² (379 g/m ²) 2710: 10.4 oz/yd ² (353 g/m ²)	ACOUSTICAL VALUE	2701: NRC 0.15 / SAA 0.15 2703: NRC 0.10 / SAA 0.09	2705: NRC 0.05 / SAA 0.06 2710: NRC 0.05 / SAA 0.05
			ACOUSTICAL PERFORMANCE	NRC (Noise Reduction Coefficient) and SAA (Sound Absorption Average) tested in accordance with ASTM C423-09a.	

SPECIFICATIONS

FIRE CLASSIFICATION	Styles 2701/2705/2710: California U.S. Title 19 (small scale), NFPA 701 TM#1 (small scale), NFPA 101 (Class A Rating), IBC Section 803.1.1 (Class A Rating), BS 5867 Part 2 Type B Performance, NFPA 701 TM#2 (large scale), CAN/ULC-S 109 (large and small scale), CAN/CGSB2-4. 162-M80. Style 2703: California U.S. Title 19 (small scale), NFPA 701 TM#1 (small scale), NFPA 101 (Class A Rating), IBC Section 803.1.1 (Class A Rating), BS 5867 Part 2 Type B Performance, NFPA 701 TM#2 (large scale), CAN/ULC-S 109 (large and small scale), CAN/CGSB2-4. 162-M80, CAN/ULC S-102.
BACTERIA AND FUNGAL RESISTANCE	ASTM E 2180, ASTM G21, ASTM G22, AATCC30 Part 3, ASTM D 3273, GREENGUARD Mold and Bacteria Standard ASTM 6329; includes Microban antimicrobial additives.
ENVIRONMENTAL CERTIFICATION	Certified to GREENGUARD and GREENGUARD Gold standards for low chemical emissions into indoor air during product usage.
SAFE USE	RoHS/Directive 2002/95/EC, US Consumer Product Safety Commission Section 101, ANSI/WCMA A 100.1-2007 for lead content and REACH (EC 1907/2006) compliant.
STANDARD USES	Roller shades, Roman shades and panel tracks.
WARRANTY	10-year interior, 5-year exterior.

TECHNICAL DATA

		SOLAR OPTICAL PROPERTIES																SHGC/G VALUE g-tot (glass & blind)							
		TS%				RS%				AS%				TV%				Single 1/4 CL				Insulating 1HA			
OPENNESS %		1%	3%	5%	10%	1%	3%	5%	10%	1%	3%	5%	10%	1%	3%	5%	10%	1%	3%	5%	10%	1%	3%	5%	10%
COLOR	NUMBER	Rm/St*				Rm/St				Rm/St				Rm/St				Rm/St				Rm/St			
Oyster	P12	21/21	22/22	22/22	34/34	64/64	62/62	62/62	54/54	15/15	16/16	16/16	12/12	17/17	19/19	20/20	32/32	0.31/0.31	0.32/0.32	0.32/0.32	0.39/0.39	0.23/0.23	0.23/0.23	0.23/0.23	0.27/0.27
Oyster / Beige	P13	15/16	15/18	23/23	29/29	57/56	58/33	54/48	51/47	28/28	27/49	23/29	20/24	12/13	13/16	21/21	28/28	0.33/0.40	0.33/0.55	0.37/0.47	0.40/0.49	0.23/0.28	0.25/0.35	0.26/0.31	0.27/0.32
Oyster / Pearl Gray	P14	8/8	9/11	19/17	27/25	54/33	53/49	51/34	41/51	38/59	38/40	30/49	33/24	4/6	9/10	21/16	25/23	0.34/0.53	0.35/0.43	0.38/0.54	0.45/0.39	0.24/0.35	0.25/0.30	0.26/0.35	0.29/0.27
Oyster / Charcoal	P28	5/4	7/6	12/11	21/20	39/10	40/10	40/11	37/17	56/86	53/84	48/78	42/63	6/4	8/6	14/12	24/21	0.41/0.66	0.42/0.66	0.43/0.67	0.46/0.65	0.28/0.41	0.28/0.41	0.29/0.41	0.30/0.40
Oyster / Pewter	P91	6/5	8/8	11/13	24/21	43/19	44/19	46/22	43/25	51/76	48/73	43/65	33/54	6/5	9/8	12/14	25/23	0.39/0.61	0.40/0.61	0.39/0.61	0.44/0.61	0.26/0.38	0.27/0.39	0.27/0.38	0.29/0.38
Oyster / Chestnut	P92	6/5	7/8	12/12	25/22	41/13	42/14	43/20	41/20	53/82	51/78	45/68	34/58	6/5	8/8	13/12	26/23	0.40/0.64	0.41/0.64	0.41/0.62	0.45/0.64	0.28/0.40	0.28/0.40	0.28/0.39	0.30/0.40
Charcoal	V21	3/3	5/5	7/7	15/15	4/4	4/4	4/4	4/3	93/93	91/91	89/89	81/81	3/3	5/5	7/7	15/15	0.69/0.69	0.70/0.70	0.70/0.70	0.72/0.72	0.43/0.43	0.43/0.43	0.43/0.43	0.44/0.44
Charcoal / Gray	V22	3/3	5/5	8/8	15/15	14/6	13/6	6/12	10/5	83/91	82/89	86/80	76/80	3/3	5/5	8/8	14/14	0.63/0.68	0.64/0.68	0.69/0.65	0.68/0.71	0.40/0.42	0.40/0.42	0.43/0.41	0.42/0.43
Charcoal / Slate	V64	4/4	7/7	9/9	15/15	30/10	27/10	25/9	16/7	66/86	65/83	66/83	69/78	4/4	7/7	8/8	15/15	0.53/0.66	0.56/0.67	0.58/0.68	0.65/0.70	0.35/0.41	0.36/0.41	0.37/0.42	0.40/0.43
Charcoal / Taupe	V65	4/4	6/6	9/9	15/15	25/9	24/8	21/8	17/7	71/88	70/86	70/84	69/78	3/3	6/6	8/8	14/14	0.56/0.67	0.58/0.67	0.60/0.68	0.64/0.70	0.36/0.41	0.37/0.42	0.38/0.42	0.40/0.43
Charcoal / Brown	V66	4/4	6/6	9/9	14/14	17/7	17/7	16/7	12/6	78/89	77/87	75/85	74/80	4/4	6/6	8/8	14/14	0.62/0.68	0.62/0.68	0.64/0.69	0.67/0.71	0.39/0.42	0.39/0.42	0.40/0.42	0.41/0.43

* Rm/St = Room side / Street side.



*TS - Solar Transmittance, RS - Solar Reflectance, AS - Solar Absorptance, TV - Visual Transmittance *SHGC = Solar Heat Gain Coefficient *1/4 CL = 1/4" Clear Glass, 1 HA = 1" Heat Absorbing Glass *Fabrics Installed Internally, Zero-Degree Profile Angle *Solar Heat Gain Coefficient (SHGC) shown calculated according to Office of Building Technology, State and Community Programs, Energy Efficiency and Renewable Energy, U.S. Department of Energy's definition of SHGC. SHGC represents the percentage of solar heat gain that is transmitted to the interior through the glass and shading system. If you are using glass whose performance is listed in terms of SC, you may convert to SHGC by multiplying the SC by 0.87.



© SheerWeave is a registered trademark of PHIFER INCORPORATED.
© MICROBAN is a registered trademark of Microban Products Company.
TM UL, the UL logos and the UL mark are trademarks of UL LLC.
© PHIFER INCORPORATED V18 3025202