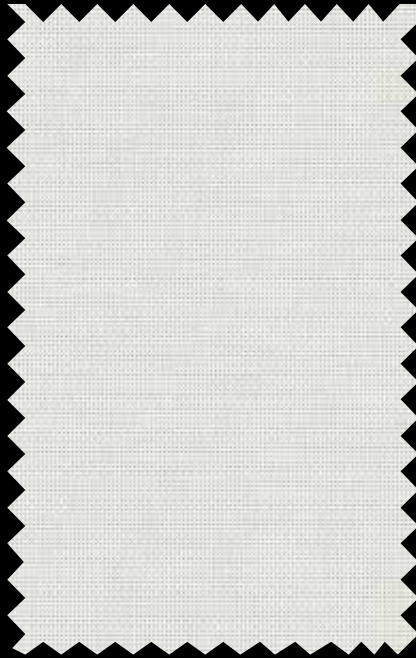


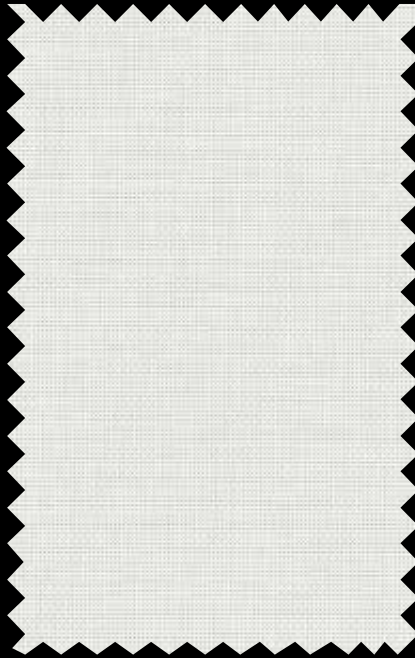
PERFORMANCE+ 2390 / 2410 / 2500  
METALLIZED FABRIC

**Style PP2390+** (5% open)



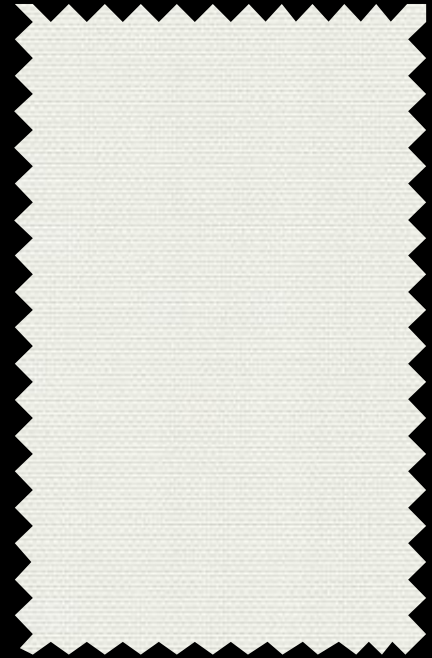
P12 Oyster

**Style PP2410+** (3% open)



P12 Oyster  
Lift to see Oyster face of fabric.

**Style PP2500+** (1% open)

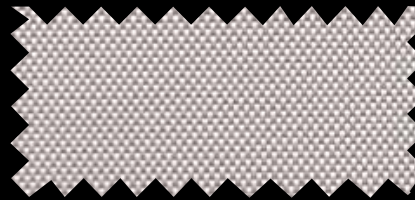


P12 Oyster

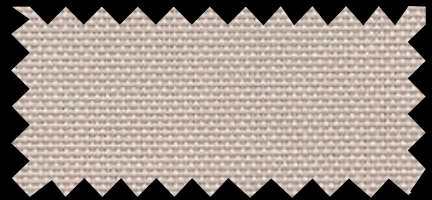
**The above styles are also available in the colors shown below.**



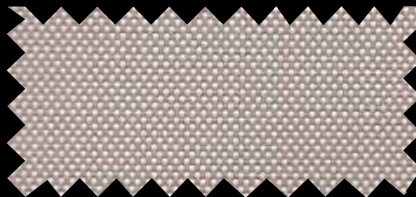
PP2500 P13 Oyster / Beige



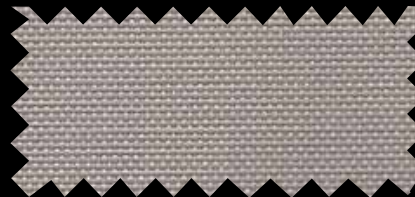
PP2500 P14 Oyster / Pearl Gray



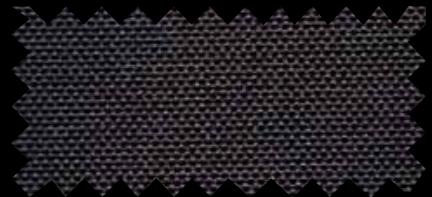
PP2500 Q20 Beige



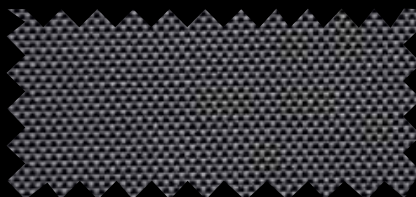
PP2500 Q21 Beige / Pearl Gray



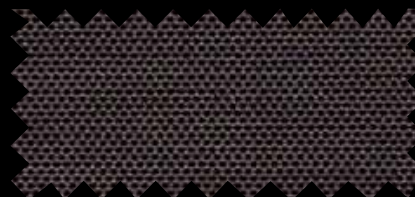
PP2500 V20 Pearl Gray



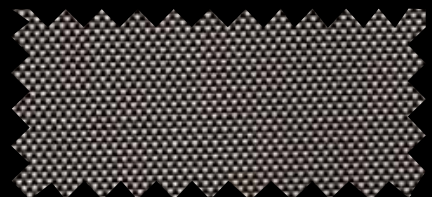
PP2500 V21 Charcoal



PP2500 V22 Charcoal / Gray



PP2500 V24 Charcoal / Chestnut



PP2500 V32 Charcoal / Alpaca

# Sheerweave® Style Performance+ 2390 / 2410 / 2500

SheerWeave Performance+ takes the performance of traditional SheerWeave Styles 2500, 2410 and 2390 fabrics “plus” the highly reflective properties of metallization and combines them to achieve the ultimate in sun control protection. By applying a thin metallized coating to the outward side of Performance+ fabrics, dark colors can achieve significant solar heat reduction comparable to what only light colors can achieve in other fabrics. The Performance+ metallized surface also improves glare reduction and outward visibility in light colors. Offered in multiple openness factors and a non-directional weave, Performance+ maximizes the best performance features of sun control in one fabric.

## SHEERWEAVE STYLE Performance+ 2390 / 2410 / 2500

STANDARD WIDTH	63" and 96" (160 cm and 243.8 cm)	FABRIC THICKNESS	<b>2500 1%:</b> 0.024 in (0.61 mm) <b>2410 3%:</b> 0.019 in (0.48 mm)	<b>2390 5%:</b> 0.018 in (0.46 mm)
ROLL LENGTH	30 Linear Yards (27.4 lm)	OPENNESS FACTOR	<b>2500 1%:</b> Approximately 1% <b>2410 3%:</b> Approximately 3%	<b>2390 5%:</b> Approximately 5%
COMPOSITION	<b>2500 1%:</b> 36% Fiberglass, 62% Vinyl on Fiberglass, 2% Aluminum Coating <b>2410 3%:</b> 34% Fiberglass, 64% Vinyl on Fiberglass, 2% Aluminum Coating <b>2390 5%:</b> 34% Fiberglass, 64% Vinyl on Fiberglass, 2% Aluminum Coating	UV BLOCKAGE	<b>2500 1%:</b> Approximately 99% <b>2410 3%:</b> Approximately 97%	<b>2390 5%:</b> Approximately 95%
MESH WEIGHT	<b>2500 1%:</b> 16.39 oz/yd2 (555.72 g/m2) <b>2410 3%:</b> 14.1 oz/yd2 (478 g/m2)	ACOUSTICAL VALUE	<b>2500 1%:</b> NRC 0.50/SAA 0.49 <b>2410 3%:</b> NRC 0.25/SAA 0.23	<b>2390 5%:</b> NRC 0.15/SAA 0.14
		ACOUSTICAL PERFORMANCE	NRC (Noise Reduction Coefficient) and SAA (Sound Absorption Average) tested in accordance with ASTM C423-09a.	

## SPECIFICATIONS

FIRE CLASSIFICATION	California U.S. Title 19 (small scale), NFPA 101 (Class A Rating), BS 5867 Part 2 Type B Performance, CAN/ULC-S 109 (large and small scale), CAN/CGSB2-4.162-M80, NFPA 701 TM#1 (small scale), IBC Section 803.1.1 (Class A Rating), NFPA 701 TM#2 (large scale).
BACTERIA AND FUNGAL RESISTANCE	ASTM E 2180, ASTM G21, ASTM G22, AATCC30 Part 3, ASTM D 3273, GREENGUARD Mold and Bacteria Standard ASTM 6329; includes Microban antimicrobial additives.
ENVIRONMENTAL CERTIFICATION	Certified to GREENGUARD and GREENGUARD Gold standards for low chemical emissions into indoor air during product usage.
SAFE USE	RoHS/Directive 2002/95/EC, US Consumer Product Safety Commission Section 101 and ANSI/WCMA A 100.1-2007 for lead content and REACH (EC 1907/2006) compliant.
STANDARD USES	Roller shades, Roman shades and panel tracks.
WARRANTY	5-year interior.

## TECHNICAL DATA

		SOLAR HEAT CONTROL															HIGH PERFORMANCE GLASS/6MM SINGLE BRONZE GLASS (HPG/SBG)														
		Solar Trans			Solar Ref Out			Light Trans			Light Ref			UV Trans			Color Rend Index			Light Trans			g-value/SHGC			SC			U value in W/m2k		
OPENNESS %		1%	3%	5%	1%	3%	5%	1%	3%	5%	1%	3%	5%	1%	3%	5%	1%	3%	5%	1%	3%	5%	1%	3%	5%	1%	3%	5%			
COLOR	NUMBER	HPG/SBG															HPG/SBG			HPG/SBG			HPG/SBG								
Oyster	P12	3	5	8	74	73	71	3	5	8	73	72	70	2	3	7	98	99	99	2/1	3/2	6/4	15/19	15/19	15/20	18/22	17/22	18/23	0.8/2.5	0.8/2.4	0.8/2.5
Oyster / Beige	P13	3	5	8	74	73	72	3	5	8	73	72	71	2	4	6	95	99	99	2/1	4/2	6/4	16/20	15/19	15/19	18/23	17/22	17/22	0.8/2.5	0.8/2.4	0.8/2.4
Oyster / Pearl Gray	P14	3	4	7	74	73	71	3	4	7	73	72	70	2	4	6	98	99	100	2/1	3/2	5/3	16/20	15/19	15/20	19/23	17/22	18/23	0.8/2.4	0.8/2.4	0.8/2.5
Beige	Q20	3	5	8	74	73	72	3	5	8	73	72	71	2	4	7	95	98	98	2/1	4/2	6/4	16/20	15/19	15/20	19/23	17/22	18/23	0.8/2.5	0.8/2.5	0.8/2.5
Beige / Pearl Gray	Q21	3	5	7	73	72	71	2	5	7	72	71	70	2	4	6	96	99	99	2/1	4/3	5/4	16/20	14/20	15/20	18/22	17/23	18/23	0.8/2.5	0.8/2.5	0.8/2.6
Pearl Gray	V20	2	4	7	75	75	74	2	4	7	74	74	73	2	4	6	98	99	99	2/1	3/2	5/3	15/19	14/18	15/19	18/22	16/21	17/22	0.8/2.4	0.8/2.4	0.8/2.4
Charcoal	V21	2	4	8	72	71	71	2	4	8	71	70	70	2	4	7	99	100	100	1/1	3/2	6/4	17/21	15/19	16/20	19/24	18/22	18/23	0.8/2.5	0.8/2.4	0.8/2.5
Charcoal Gray	V22	2	4	8	73	72	71	2	4	8	72	71	70	2	4	7	100	100	100	1/1	3/2	6/4	16/20	15/19	16/20	18/21	17/22	18/23	0.8/2.5	0.8/2.4	0.8/2.4
Charcoal Chestnut	V24	2	4	8	73	72	71	2	4	8	72	71	70	2	4	7	100	100	100	1/1	3/2	6/4	16/20	15/19	16/20	19/23	17/22	18/23	0.8/2.5	0.8/2.4	0.8/2.5
Charcoal Alpaca	V32	2	4	8	75	75	74	2	4	8	74	74	73	2	4	7	98	99	100	2/1	3/2	6/4	15/19	15/19	15/20	18/22	17/22	17/23	0.8/2.4	0.8/2.5	0.8/2.5

PRODUCT CERTIFIED FOR LOW CHEMICAL EMISSIONS  
UL.COM/GG  
UL 2818

5 YEAR Interior Warranty

Proudly Made in the USA

Halogen Free Flame Retardant

Safe Use

PROTECTION THAT LIVES ON

TactLess Technology

Energy Saving

APPROVED BY MELANOMA INTERNATIONAL FOUNDATION

MIF Seal of Approval

Noise Reduction

**Performance+**  
●●●●●●●●

**DRAPER®**

411 S. Pearl St. | Spiceland, IN 47385  
765.987.7999 | 800.238.7999  
draperinc.com

Solar Trans - Solar Transmittance, Solar Ref Out - Solar Reflection Out, Light Trans - Light Transmittance, Light Ref - Light Reflection, UV Trans - Ultra Violet Light Transmittance, Color Rend Index - Color Rendering Index, g-Value/SHGC = Solar Heat Gain Coefficient \*1/4 CL = 1/4" Clear Glass, 1 HA = 1" Heat Absorbing Glass \*Fabrics Installed Internally, Zero-Degree Profile Angle \*Solar Heat Gain Coefficient (SHGC) shown calculated according to Office of Building Technology, State and Community Programs, Energy Efficiency and Renewable Energy, U.S. Department of Energy's definition of SHGC. SHGC represents the percentage of solar heat gain that is transmitted to the interior through the glass and shading system. If you are using glass whose performance is listed in terms of SC, you may convert to SHGC by multiplying the SC by 0.87. SC - Shading coefficient, U-Value in W/m2k - Watts per Meter Squared.

**PHIFER**  
INCORPORATED

® SheerWeave is a registered trademark of PHIFER INCORPORATED.  
® MICROBAN is a registered trademark of Microban Products Company.  
TM UL, the UL logos and the UL mark are trademarks of UL LLC.  
© PHIFER INCORPORATED V18 3035065