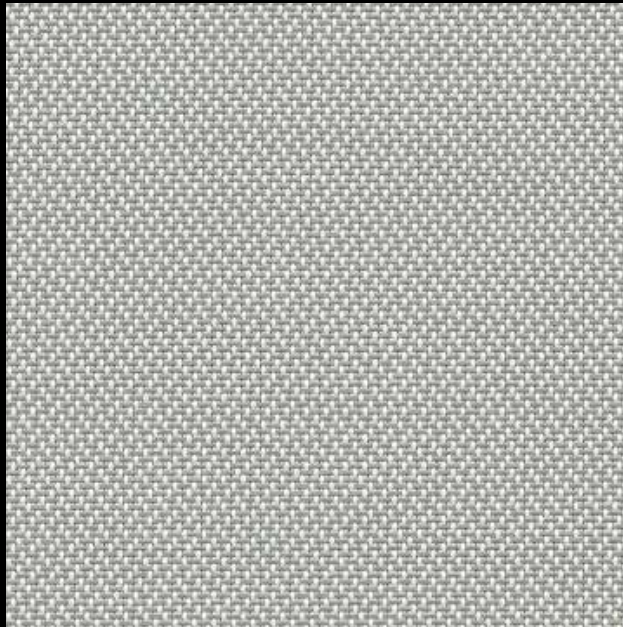


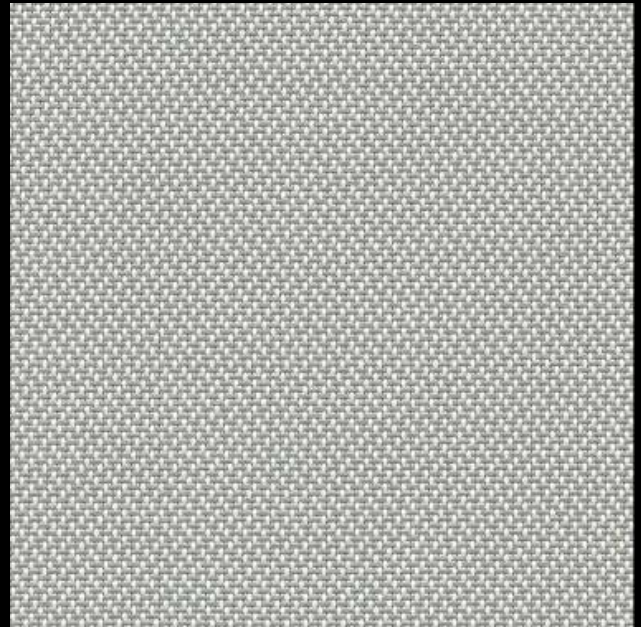
STYLE PW4550 / PW4650

Style PW4550
(5% open)



PW4550 P10 Granite

Style PW4650
(3% open)



PW4650 P10 Granite

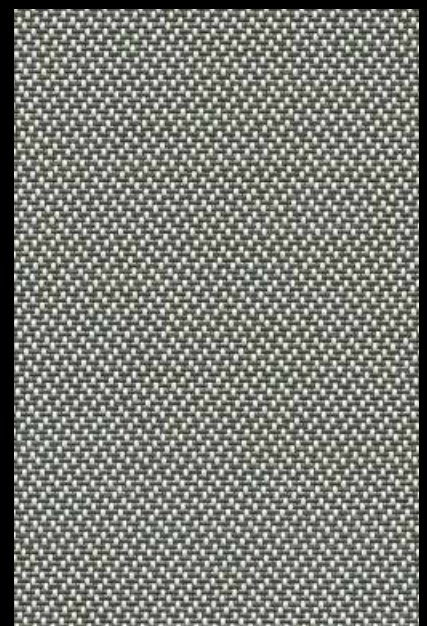
The above styles are also available in the colors shown below.



P65 Linen



V45 Coal



V47 Chestnut

Sheerweave® Style PW4550 / 4650

Woven from thin and light weight vinyl-coated polyester yarns into a unique twill weave, Styles 4550 and 4650 offer a distinct two-sided appearance that maximizes both outward visibility and solar heat reduction. Style 4550/4650 can also be used in exterior roller shades.

SHEERWEAVE STYLE PW4550 / 4650

STANDARD WIDTH	63" and 98" (160 cm and 248.9 cm)	FABRIC THICKNESS	PW4550 5%: 0.025 in (0.64 mm) PW4650 3%: 0.026 in (0.66 mm)
ROLL LENGTH	30 Linear Yards (27.4 lm)	OPENNESS FACTOR	PW4550 5%: Approximately 5% PW4650 3%: Approximately 3%
COMPOSITION	17% Polyester / 83% Vinyl on Polyester	UV BLOCKAGE	PW4550 5%: Approximately 95% PW4650 3%: Approximately 97%
MESH WEIGHT	PW4550 5%: 13.0 oz/yd ² (440.78 g/m ²) PW4650 3%: 13.3 oz/yd ² (450.96 g/m ²)	ACOUSTICAL VALUE	PW4550 5%: NRC 0.10 / SAA 0.11 PW4650 3%: NRC 0.15 / SAA 0.18
		ACOUSTICAL PERFORMANCE	NRC (Noise Reduction Coefficient) and SAA (Sound Absorption Average) tested in accordance with ASTM C423-09a.

SPECIFICATIONS

FIRE CLASSIFICATION	California U.S. Title 19 (small scale), NFPA 701 TM#1 (small scale), NFPA 101 (Class A Rating), IBC Section 803.1.1 (Class A Rating), BS 5867 Part 2 Type B Performance, NFPA 701 TM#2 (large scale), CAN/ULC-S 109 (large and small scale).
BACTERIA AND FUNGAL RESISTANCE	ASTM E 2180, ASTM G21, ASTM G22, AATCC30 Part 3, ASTM D 3273, GREENGUARD Mold and Bacteria Standard ASTM 6329; includes Microban antimicrobial additives.
ENVIRONMENTAL CERTIFICATION	Certified to GREENGUARD and GREENGUARD Gold standards for low chemical emissions into indoor air during product usage.
LEAD FREE	RoHS/Directive 2002/95/EC, US Consumer Product Safety Commission Section 101, ANSI/WCMA A 100.1-2007 for lead content and REACH (EC 1907/2006) compliant.
STANDARD USES	Roller shades, Roman shades and panel tracks.
WARRANTY	10-year interior, 5-year exterior

TECHNICAL DATA

CODE / COLOR	OPENNESS	SOLAR OPTICAL PROPERTIES								SHGC/G VALUE g-tot (glass & blind)			
		TS%		RS%		AS%		TV%		Single 1/4CL	Insulating 1HA	Single 1/4CL	Insulating 1HA
		5%	3%	5%	3%	5%	3%	5%	3%	5%	5%	3%	3%
Granite	P10	7	6	56	55	37	39	8	8	0.33	0.24	0.33	0.24
Linen	P65	9	7	59	58	32	35	10	8	0.32	0.23	0.31	0.23
Coal	V45	8	5	48	47	44	48	9	7	0.37	0.26	0.37	0.26
Chestnut	V47	9	7	48	48	43	45	11	8	0.37	0.26	0.37	0.26



PRODUCT CERTIFIED FOR
LOW CHEMICAL EMISSIONS
UL.COM/GG
UL 2818



MIF Seal of
Approval



411 S. Pearl St. | Spiceland, IN 47385
765.987.7999 | 800.238.7999
draperinc.com

*TS - Solar Transmittance, RS - Solar Reflectance, AS - Solar Absorptance, TV - Visual Transmittance *SHGC = Solar Heat Gain Coefficient *1/4 CL = 1/4" Clear Glass, 1 HA = 1" Heat Absorbing Glass *Fabrics Installed Internally, Zero-Degree Profile Angle *Solar Heat Gain Coefficient (SHGC) shown calculated according to Office of Building Technology, State and Community Programs, Energy Efficiency and Renewable Energy, U.S. Department of Energy's definition of SHGC. SHGC represents the percentage of solar heat gain that is transmitted to the interior through the glass and shading system. If you are using glass whose performance is listed in terms of SC, you may convert to SHGC by multiplying the SC by 0.87.



© SheerWeave is a registered trademark of PHIFER INCORPORATED.
© MICROBAN is a registered trademark of Microban Products Company.
TM UL, the UL logos and the UL mark are trademarks of UL LLC.
© PHIFER INCORPORATED V18 3027099