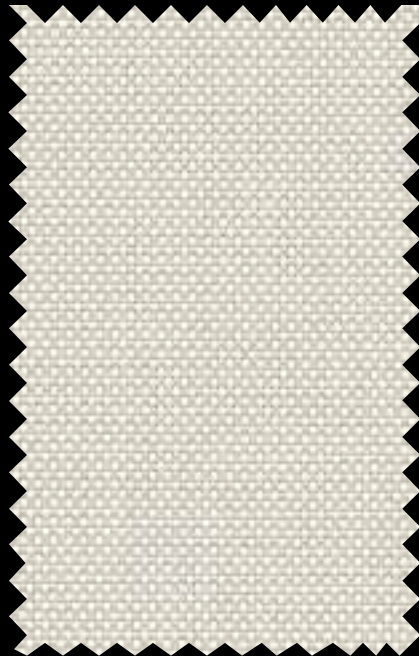




STYLE PW4400 / 3500 / 4100

Style PW4400
(3% open)



PW4460 U59 Linen (Alabaster)

Style PW3500(4000)
(5% open)



PW3560 U59 Linen (Alabaster)

Style PW4100
(10% open)

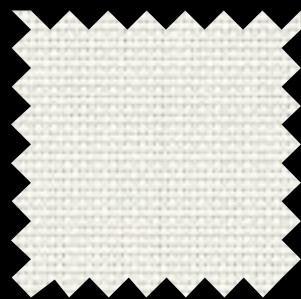


PW4160 U59 Linen (Alabaster)

**A Greener
Shading Solution**



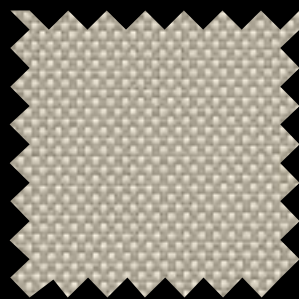
The above styles are also available
in the colors shown below.



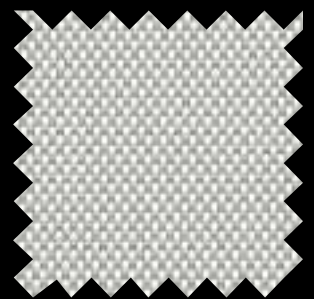
U58 Snowy White (Chalk)
PW4410



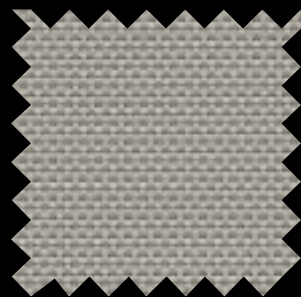
U60 Bone (Pebblestone)
PW4420



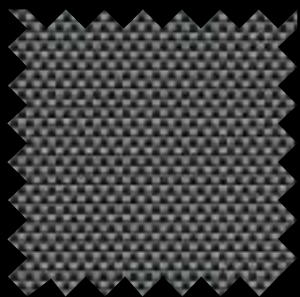
U61 Greystone
PW4425



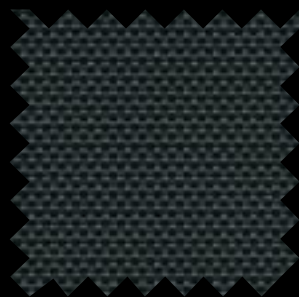
U62 Granite
PW4445



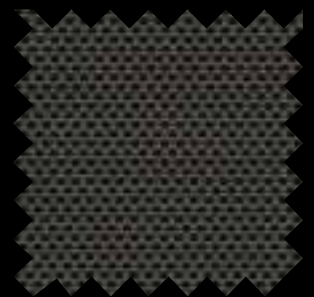
U63 Soft Grey (Pewter)
PW4410



U64 Ash
PW4455



U65 Ebony
PW4470



U66 Tobacco
PW4480

Digital sample of actual colors may vary slightly.

Sheerweave® Style PW4400 / 3500(4000) / 4100

As the only sun control fabrics in the market to use DOW's unique ECOLIBRIUM bio-based plasticizer, Styles 3500(4000), 4100 and 4400 combine the durability of vinyl-coated polyester with the latest in green PVC technology. ECOLIBRIUM is a renewable alternative to traditional plasticizers that lowers greenhouse gas emissions as much as 40% vs existing PVC compounds. Style 3500(4000)/4100/4400 with DOW ECOLIBRIUM is phthalate-free, lead-free and RoHS compliant. These fabrics maintain all of the established benefits of traditional vinyl such as durability, cleanability and fabric longevity. Style 3500(4000)/4100/4400 may also be used in exterior shading systems.

SHEERWEAVE STYLE PW4400 / 3500(4000) / 4100

STANDARD WIDTH	3500(4000) / 4400: 63", 84", 98" and 126" (160 cm, 213.4 cm, 248.9 cm and 320 cm) 4100: 63", 84" and 98" (160 cm, 213.4 cm and 248.9 cm)	FABRIC THICKNESS	4400 3%: 0.034 in (0.86 mm) 3500(4000) 5%: 0.032 in (0.81 mm)	4100 10%: 0.032 in (0.81 mm)
ROLL LENGTH	30 Linear Yards (27.4 lm)	OPENNESS FACTOR	4400 3%: Approximately 3% 3500(4000) 5%: Approximately 5%	4100 10%: Approximately 10%
COMPOSITION	25% Polyester, 75% Vinyl on Polyester (Over 50% of compound components are derived from crop-based feed stocks and minerals. Over 2/3 of total compound is derived from non fossil fuel based materials.)	UV BLOCKAGE	4400 3%: Approximately 97% 3500(4000) 5%: Approximately 95%	4100 10%: Approximately 90%
MESH WEIGHT	4400 3%: 19.9 oz/yd ² (675 g/m ²) 3500(4000) 5%: 18.0 oz/yd ² (610 g/m ²)	ACOUSTICAL VALUE	4400 3%: NRC 0.20 / SAA 0.19 3500(4000) 5%: NRC 0.10 / SAA 0.11	4100 10%: NRC 0.05 / SAA 0.05
		ACOUSTICAL PERFORMANCE	NRC (Noise Reduction Coefficient) and SAA (Sound Absorption Average) tested in accordance with ASTM C423-09a.	

SPECIFICATIONS

FIRE CLASSIFICATION	California U.S. Title 19 (small scale), NFPA 701 TM#1 (small scale), NFPA 101 (Class A Rating), IBC Section 803.1.1 (Class A Rating), BS 5867 Part 2 Type B Performance, NFPA 701 TM#2 (large scale), CAN/ULC-S 109 (large and small scale), CAN/CGSB2-4.162-M80.
BACTERIA AND FUNGAL RESISTANCE	ASTM E 2180, ASTM G21, ASTM G22, AATCC30 Part 3, ASTM D 3273, GREENGUARD Mold and Bacteria Standard ASTM 6329; includes Microban antimicrobial additives.
ENVIRONMENTAL CERTIFICATION	Certified to GREENGUARD and GREENGUARD Gold standards for low chemical emissions into indoor air during product usage.
LEAD FREE	RoHS/Directive 2002/95/EC, US Consumer Product Safety Commission Section 101, ANSI/WCMA A 100.1-2007 for lead content and REACH (EC 1907/2006) compliant.
STANDARD USES	Roller shades, Roman shades and panel tracks.
WARRANTY	10-year interior, 5-year exterior.

TECHNICAL DATA

		SOLAR OPTICAL PROPERTIES												SHGC/G VALUE g-tot (glass & blind)					
		TS%			RS%			AS%			TV%			Single 1/4 CL		Insulating 1HA			
OPENNESS %		3%	5%	10%	3%	5%	10%	3%	5%	10%	3%	5%	10%	3%	5%	10%			
COLOR	NUMBER																		
Snowy White (Chalk)	U58	12	16	18	70	68	66	18	16	16	7	12	15	0.26	0.28	0.30	0.13	0.22	0.22
Linen (Alabaster)	U59	10	15	19	62	57	56	28	28	25	6	13	16	0.30	0.34	0.36	0.15	0.24	0.25
Bone (Pebblestone)	U60	9	14	16	51	49	48	40	37	36	6	12	15	0.37	0.38	0.39	0.24	0.26	0.27
Greystone	U61	6	10	14	39	34	35	55	56	51	5	9	14	0.42	0.45	0.46	0.28	0.21	0.30
Granite	U62	6	11	15	48	41	42	46	48	43	5	10	14	0.37	0.42	0.43	0.17	0.20	0.20
Soft Grey (Pewter)	U63	3	8	12	26	27	26	71	65	62	2	9	14	0.49	0.49	0.50	0.22	0.31	0.32
Ash	U64	3	7	10	10	11	10	87	82	80	4	8	11	0.57	0.57	0.58	0.36	0.26	0.27
Ebony	U65	3	6	10	3	5	4	94	89	86	3	8	11	0.61	0.60	0.62	0.37	0.37	0.37
Tobacco	U66	3	7	10	5	5	5	92	88	85	3	8	11	0.60	0.61	0.61	0.37	0.27	0.28



PRODUCT CERTIFIED FOR LOW CHEMICAL EMISSIONS
UL.COM/GG
UL 2818



MIF Seal of Approval



411 S. Pearl St. | Spiceland, IN 47385
765.987.7999 | 800.238.7999
draperinc.com



*TS - Solar Transmittance, RS - Solar Reflectance, AS - Solar Absorptance, TV - Visual Transmittance *SHGC = Solar Heat Gain Coefficient *1/4 CL = 1/4" Clear Glass, 1 HA = 1" Heat Absorbing Glass *Fabrics Installed Internally, Zero-Degree Profile Angle *Solar Heat Gain Coefficient (SHGC) shown calculated according to Office of Building Technology, State and Community Programs, Energy Efficiency and Renewable Energy, U.S. Department of Energy's definition of SHGC. SHGC represents the percentage of solar heat gain that is transmitted to the interior through the glass and shading system. If you are using glass whose performance is listed in terms of SC, you may convert to SHGC by multiplying the SC by 0.87.

© SheerWeave is a registered trademark of PHIFER INCORPORATED.
© MICROBAN is a registered trademark of Microban Products Company.
TM UL, the UL logos and the UL mark are trademarks of UL LLC.
© PHIFER INCORPORATED V18 3027401