

Interior Sun Control Fabrics

Phifer
SheerWeave
BRAND FABRIC
STYLE SW3000

(14% open)



Q02 Custard Cream



Q01 Mushroom Sand



P01 Pearl White



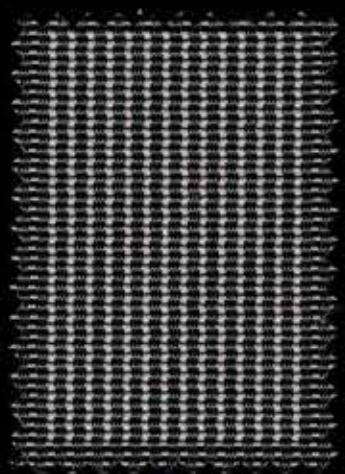
V01 Pale Grey



Q19 Honey Sage



Q17 Sand Dollar



Q18 Espresso



V02 Ninja Grey



Q04 Chocolate

SheerWeave® Style SW3000

Specifications

■ Style SW3000 is made with an open weave that lets in natural light while filtering out the sun's heat. Style SW3000 can also be used in exterior roller shades.

Fire Classification: NFPA 701-2004 TM# 1 (small scale), NFPA 101 (Class A Rating), IBC Section 903.1 (Class A Rating) and NFPA 701 TM#2 Large Scale

Bacteria and Fungal Resistance: ASTM E 2180, ASTM G21, AATCC30 Part 3, ASTM D 3273, GREENGUARD Mold and Bacteria Standard ASTM 6329; includes Microban antimicrobial additives

Environmental Certification: Certified to GREENGUARD and GREENGUARD Gold standards for low chemical emissions into indoor air during product usage

Lead Free: RoHS / Directive 2002/95/EC, US Consumer Product Safety Commission Section 101, ANSI/WCMA A100.1-2007 for lead content and REACH (EC 1907/2006) compliant

Standard Uses: Roll-up shades, Roman shades, panel tracks, sheers and screens

Warranty: 10-year interior; 5-year exterior

TrackLess®: TrackLess Technology minimizes the fiberglass yarns inherent tendencies to track when being rolled up in a shade. With TrackLess Technology these same fabrics now track less, roll up straighter and reduce shade fabrication time.



PRODUCT CERTIFIED FOR
LOW CHEMICAL EMISSIONS
UL.COM/IGG
UL 2818



Microban® antimicrobial protection inhibits the growth of stain-causing bacteria, mold and mildew on the shade.



Standard Widths: 72" and 96" (182.9cm and 243.8cm)

Standard Roll Length: 30 Linear yards (27.4m)

Composition: 35% Fiberglass, 65% Vinyl on Fiberglass.
31% Polyester, 69% Vinyl on Polyester.

Mesh Weight: 13.46 oz/yd² (456 g/m²)

Fabric Thickness: .028 in (0.71mm)

Openness Factor: Approximately 14%

UV Blockage: Approximately 86%

Solar Heat Control Properties of Phifer SheerWeave Style SW3000 Fabrics Installed Internally, Zero-Degree Profile Angle

Style No.	Color	* Solar Optical Properties				Shading Coefficient w/					
		TS	RS	AS	TV	Single			Insulating		
						1/8CL	1/4CL	1/4HA	1/2CL	1CL	1HA
SW3005	Mushroom Sand	22	45	33	21	0.50	0.48	0.40	0.46	0.44	0.32
SW3010	Pearl White	24	62	14	21	0.38	0.38	0.34	0.35	0.35	0.27
SW3015	Custard Cream	23	53	24	22	0.44	0.43	0.37	0.41	0.40	0.30
SW3020	Sand Dollar	17	46	37	15	0.48	0.47	0.39	0.45	0.43	0.31
SW3025	Honey Sage	16	31	53	16	0.58	0.56	0.44	0.54	0.51	0.36
SW3030	Pale Grey	19	40	41	19	0.53	0.51	0.41	0.49	0.46	0.33
SW3045	Ninja Grey	12	8	80	14	0.73	0.69	0.51	0.68	0.62	0.42
SW3060	Espresso	15	9	76	16	0.73	0.69	0.51	0.67	0.62	0.42
SW3070	Chocolate	13	4	83	15	0.76	0.72	0.52	0.70	0.64	0.44

* Performance evaluations conducted by Matrix, Inc., Mesa, Arizona.

TS = Solar Transmittance 1/8 CL = 1/8" Clear Glass
RS = Solar Reflectance 1/4 CL = 1/4" Clear Glass
AS = Solar Absorption 1/4HA = 1/4" Heat Absorbing Glass
TV = Visual Transmittance 1/2 CL = 1/2" Insulating Clear Glass
1 CL = 1" Insulating Clear Glass
1HA = 1" Insulating Heat Absorbing Glass

The solar optical properties are used to calculate the shading coefficient. The shading coefficient represents the percentage of solar heat gain that is transmitted to the interior through the glass and shading system. Darker colors provide maximum glare reduction and visibility. For complete technical information, current test results, performance specifications and larger samples, contact our Sun Control Marketing Department.



411 S. Pearl St. Spiceland, IN 47385
Ph: 765-987-7999 Fax: 765-987-7142
www.draperinc.com

© SheerWeave is a registered trademark of PHIFER INCORPORATED.
™ TrackLess is a trademark of PHIFER INCORPORATED.
™ UL, the UL logos and the UL mark are trademarks of UL LLC.
© MICROBAN is a registered trademark of Microban Products Company.
© PHIFER INCORPORATED V.14 3028203