

**NEW!**  
Now with  
**TrackLess**  
TECHNOLOGY

# Interior Sun Control Fabrics

Phifer  
**SheerWeave**

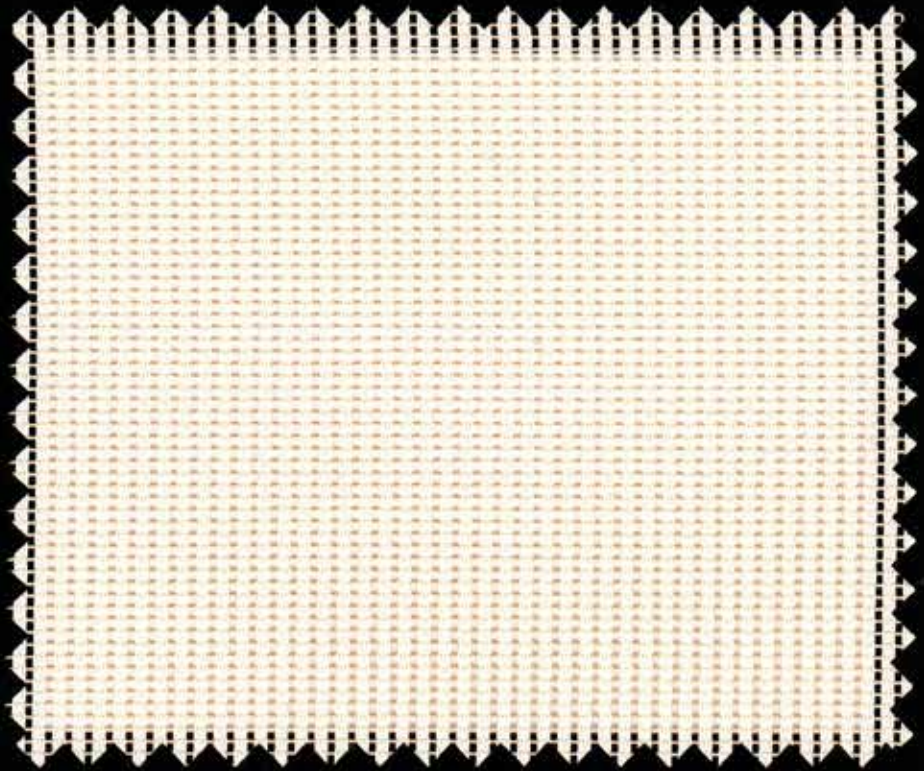
BRAND FABRIC

STYLE SW1000 - SUNSCREEN

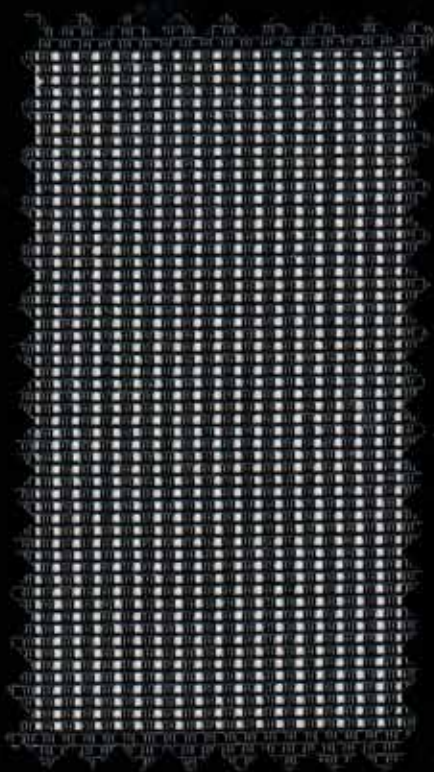
(25% open)



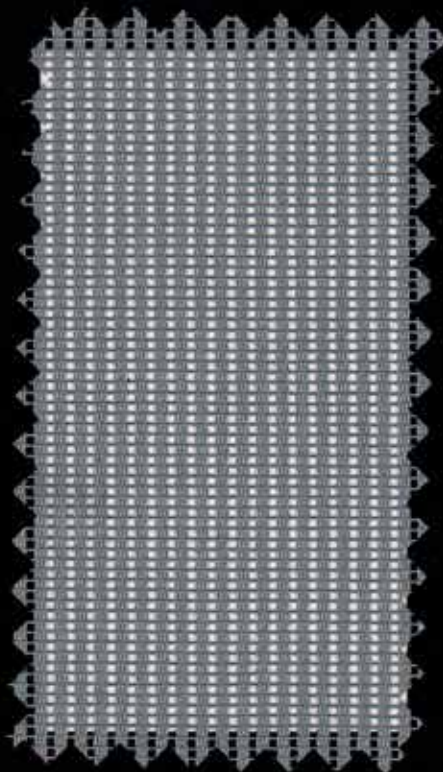
SW1005 White



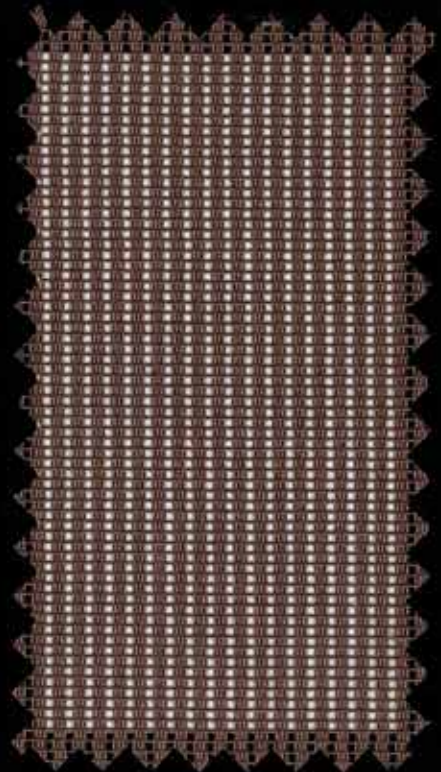
SW1010 Antique White



SW1060 Charcoal



SW1020 Silver Gray



SW1030 Bronze

# SheerWeave® Style SW1000 - SunScreen®

## Specifications

■ This ribbed-weave fiberglass fabric offers substantial shading while allowing excellent outward visibility and improved daytime privacy. Style SW1000 - SunScreen can also be used in exterior roller shades.

**Fire Classification:** California U.S. Title 19 (small scale), NFPA 701-2004 TM#1 (small scale), NFPA 101 (Class A Rating), UBC (Class I), BS 5867 2008 Part 2 Type B Performance and NFPA 701 TM#2 Large Scale

**Bacteria and Fungal Resistance:** ASTM E 2180, ASTM G22, AATCC30 Part 3, ASTM G21, ASTM D 3273, GREENGUARD Mold and Bacteria Standard ASTM 6329; includes Microban antimicrobial additives

**Environmental Certification:** GREENGUARD Certified and GREENGUARD for Children and Schools Certified

**Lead Free:** RoHS / Directive 2002/95/EC, US Consumer Product Safety Commission Section 101, ANSI/WCMA A100.1-2007 for lead content and REACH (EC 1907/2006) compliant

**Standard Uses:** Roll-up shades, Roman shades, folding shades, pleated shades, vertical blinds, panel tracks, sheers and screens

**Warranty:** 10-year interior; 5-year exterior

**TrackLess®:** TrackLess Technology minimizes the fiberglass yarns inherent tendencies to track when being rolled up in a shade. With TrackLess Technology these same fabrics now track less, roll up straighter and reduce shade fabrication time.

**Composition:** 35% Fiberglass, 65% Vinyl on Fiberglass

**Openness Factor:** Approximately 25%

**UV Blockage:** Approximately 75%

### WHITE • ANTIQUE WHITE

**Standard Widths:** 36", 48", 72", and 84" (91.4cm, 121.9cm, 182.9cm and 213.4cm)

**Standard Roll Length:** 30 Linear yards (27.4M)

**Mesh Weight:** 8.8 oz/yd<sup>2</sup> (298 g/m<sup>2</sup>)

**Fabric Thickness:** .020 in. (0.51mm)

### CHARCOAL • SILVER GRAY • BRONZE

**Standard Widths:** 36", 48", 60", 72", and 84" (91.4cm, 121.9cm, 152.4cm, 182.9cm and 213.4cm)

**Standard Roll Length:** 100' (30.48M)

**Mesh Weight:** 8.5 oz/yd<sup>2</sup> (288 g/m<sup>2</sup>)

**Fabric Thickness:** .019 in. (0.48mm)



## Solar Heat Control Properties of Phifer SheerWeave Style SW1000 - SunScreen Fabrics Installed Internally, Zero-Degree Profile Angle

Style No.	Color	* Solar Optical Properties				Shading Coefficient w/		
		TS	RS	AS	TV	1/8CL	1/4CL	1/4 HA
SW1005	White	36	50	14	31	0.50	0.48	0.40
SW1010	Antique White	37	47	16	32	0.52	0.51	0.41
SW1020	Silver Gray	22	16	62	24	0.70	0.66	0.49
SW1030	Bronze	26	14	60	27	0.72	0.68	0.51
SW1060	Charcoal	25	6	69	29	0.77	0.73	0.53

\* Performance evaluations conducted by Matrix, Inc., Mesa, Arizona.

TS = Solar Transmittance      1/8 CL = 1/8" Clear Glass  
 RS = Solar Reflectance      1/4 CL = 1/4" Clear Glass  
 AS = Solar Absorbance      1/4HA = 1/4" Heat Absorbing Glass  
 TV = Visual Transmittance

The solar optical properties are used to calculate the shading coefficient. The shading coefficient represents the percentage of solar heat gain that is transmitted to the interior through the glass and shading system. Darker colors provide maximum glare reduction and visibility. For complete technical information, current test results, performance specifications and larger samples, contact our Sun Control Marketing Department.



411 S. Pearl St. Spiceland, IN 47385  
 Ph: 765-987-7999 Fax: 765-987-7142  
[www.draperinc.com](http://www.draperinc.com)

© SheerWeave and SunScreen are registered trademarks of PHIFER INCORPORATED.  
 © GREENGUARD is a registered trademark of GREENGUARD Environmental Institute.  
 © MICROBAN is a registered trademark of Microban Products Company.  
 © PHIFER INCORPORATED V10 3027283