

# Individual Group Control (IGC) 4N1 Motor Controller

Item #: 1811416

## OVERVIEW:

The Individual Group Control (IGC) 4n1 Motor Controller provides individual and group control for up to four Somfy® Wired Technology (WT) motors with up to three intermediate positions per motor. Through the use of the DecoFlex Dry Contact Keypad (#1811402, required), users can access 3 preset positions as well as Up, Down and Stop. Keypads can also be used to set custom intermediate positions. Multiple IGC 4n1 Motor Controllers can be daisy-chained together for simplified synchronized control from a single keypad. The IGC 4n1 Motor Controller can not set upper and lower motor limits, but senses the current to identify them.



## TECHNICAL SPECIFICATIONS:

- Line Voltage Input: 115V AC +/- 10%; 50 – 60Hz
- Low Voltage Output to Switches: 12V DC 185 mA maximum consumption
- Output to Motor: 115V AC (5A per motor) ¼ HP
- Fuses: 5x5A (1 for each motor, 1 for the board)
- Dimensions: H 12" x W 10" x D 4"
- Materials: Steel
- Mounting: On wall
- Shipping Weight: 10 Lbs.

## FEATURES SUMMARY:

- Control up to four WT motors individually or in groups.
- Provides default intermediate positions of 25%, 50%, and 75% openness which can also be customized for each motor.
- Individual control and Master control using DecoFlex Dry Contact Keypads.
- Four Keypad ports and two Master ports.
- CSA/UL certified.
- Plenum rated.

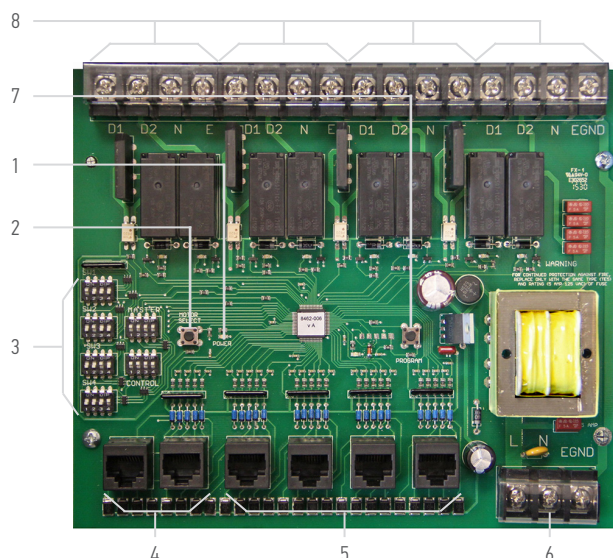
## ACCESSORIES:

- DecoFlex Dry Contact Keypad (1811402), required
- IGC RTS Receiver (1810481)

## COMPATIBLE WITH:

- AC wired motors: 400 series, 500 series and 600 series.

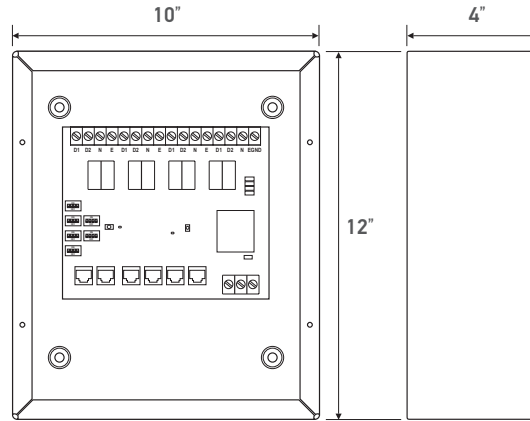
## CONNECTIONS AND INDICATORS:



| ELEMENT                      | FUNCTION   |
|------------------------------|--|
| 1 Power LED                  | Indicates power is on                              |
| 2 Motor Selector Button      | Sets Keypad group                                  |
| 3 Dip Switches               | Motor selection                                    |
| 4 Master Ports               | Connect Master Keypads and Daisy Chain Controllers |
| 5 Individual Motor Key Ports | Connect Keypads for each group                     |
| 6 To 110V AC                 | Connect to power                                   |
| 7 Program Button             | Set intermediate positions                         |
| 8 To Motors                  | Connect to motors                                  |



## DIMENSIONS:



## BEST WIRING PRACTICES

The diagram shown below is meant for illustrative purposes to show the connections from product to product. This device can be used in other configurations than shown below.

