

Techmatic Window Shade

SUBMITTAL TECHNICAL INFO

Please check all appropriate selections and attach room schedule with verified dimensions.

Fabric Series: _____

Color Name / Number: _____

Openness Factor: _____

Please see Draper's [Fabric Options page](#) for fabric colors and specifications.

Select Bead Chain Type

- Steel Chain
 - Stainless Steel (standard)
 - Black Steel
 - White Steel
- Polyester Chain
 - Black
 - Bronze
 - White
 - Ivory
 - Grey

Select Cord Tension Device

- 'P'-Clip Cord Tension Device (standard)
- WCMA Compliant Spring Loaded Cord Tension Device (see Child Safety Information, below)

Select Operator Color

- Black
- White

Select Operator Location

- Right (standard)
- Left

Select Hem Bar Style

- Kiln-Dried Hard Maple Slat in Heat Sealed Hem (standard)
- Aluminum

Select Hardware

- Universal Brackets
- Endcaps only
- Endcaps with Fascia

Headbox

- Ceiling / Wall (Surface Headbox)
- Pocket Style
- Type "D" Pocket with Tile Lip (White only; not compatible with 3" roller)
- Custom Headbox

Wall Clip

- With Ceiling Tile Lip
- Without Ceiling Tile Lip

Closure Panel for Type "D" Pocket or Wall Clip

- 1 1/2" (recommended)
- 3"
- 5" (For Wall Clip and Custom Headbox Only)

"L", "U" or "H" Channels for Light Gap Reduction

- Aluminum 'L' Angle
- Vinyl 'L' Angle
- Aluminum 'U' Channel
- Channel Liners
- Aluminum 'H' Channel

Select Hardware Finish (does not apply to Type "D" or Pocket Headbox)

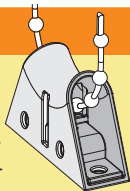
- Clear Anodized (standard)
- Black
- Ivory
- White
- Bronze
- Custom (contact Draper)

Child Safety Information

ANSI/WCMA A100.1-2018 standard (developed by the Window Coverings Manufacturer's Association and the Consumer Product Safety Commission) was established on December 15, 2018, to eliminate strangulation hazards for small children from hanging cords and chain loops.

When dealer specifies that custom shades comply with ANSI/WCMA A100.1-2018, Draper provides a pre-installed Spring-Loaded Chain Tension Device (shown at right) for clutch-operated units. When properly installed, tension device prevents creation of a hazardous loop by maintaining tension on bead chain. If not installed properly, shade is partially inoperable.

For more information, please see Draper's ANSI/WCMA A100.1-2018 compliance page: www.draperinc.com/windowshades/wcmacompliance.aspx



Specifications

EQUIPMENT

BEAD CHAIN CLUTCH OPERATOR: 10 lb. High carbon steel and molded fiberglass-reinforced polyester. Black or white in color. Bi-directional for mounting at right (standard) or left end of roller. Control loop, of any length, is a plastic or stainless steel bead chain. Stainless steel, standard. Polyester chain in ivory, grey, black, white or brown. Never needs adjusting. Patent Pending.

HEM BAR: Kiln-Dried Hard Maple or Aluminum Slat in Heat Sealed Hem.

COMPONENTS

ROLLERS: Size 1 1/4" dia. x .030 wall. Extruded aluminum. Roller assembly easily removable.

UNIVERSAL MOUNTING BRACKETS: Plated steel, with adequate projection to clear all window fixtures. Size small only: 1 5/8". Brackets do not require additional adapters. White or black to match clutch color.

ENDCAPS: Optionally available for use with fascia. 1018 steel stamping. 3 1/4" w x 3 3/4" with fascia. Complete with roller mounting bracket. Installs to face, ceiling, or jamb.

ENDCAP COVERS: Plastic covers snap onto endcaps. Available in ivory, bronze, black or white to match fascia.

FASCIA: Optional "L" shaped cover of 6063-T5 extruded aluminum, .060 wall. Assembly snaps onto endcaps without exposed fasteners. Clear anodized finish (standard) or ivory, bronze, black or white powder coat. 3 3/8" w x 3 7/8".

SURFACE HEADBOX: Consists of fascia, "L" shaped back/top cover. Endcaps slide into extrusion without exposed fasteners.

POCKET HEADBOX: Optional, for pocket installation, includes a "U" shaped back/top/front cover with removable bottom closure panel. **SIZE:** 3 7/8" x 3 15/16" (87x100mm).

TYPE "D" POCKET: Type "D" Shade Pocket, extruded aluminum, for perimeter installation. Accepts FlexShades installed with ceiling brackets. Finished in white paint. 5" x 5 3/8" x .125" (127x136x3mm) with 7/8" (22mm) tile support lip & removable bottom closure.

"L" ANGLE: 3/4" x 1" x 12'3" (1.9x2.5x373cm); 1" x 2 3/4" x 16' (2.5x7x488cm) or cut to length.

"U" CHANNEL: 1" x 2 1/2" x 16' (2.5x7x488cm) or cut to length.

"H" CHANNEL: 1" x 5" x 16' (2.5x12.7x488cm) or cut to length.

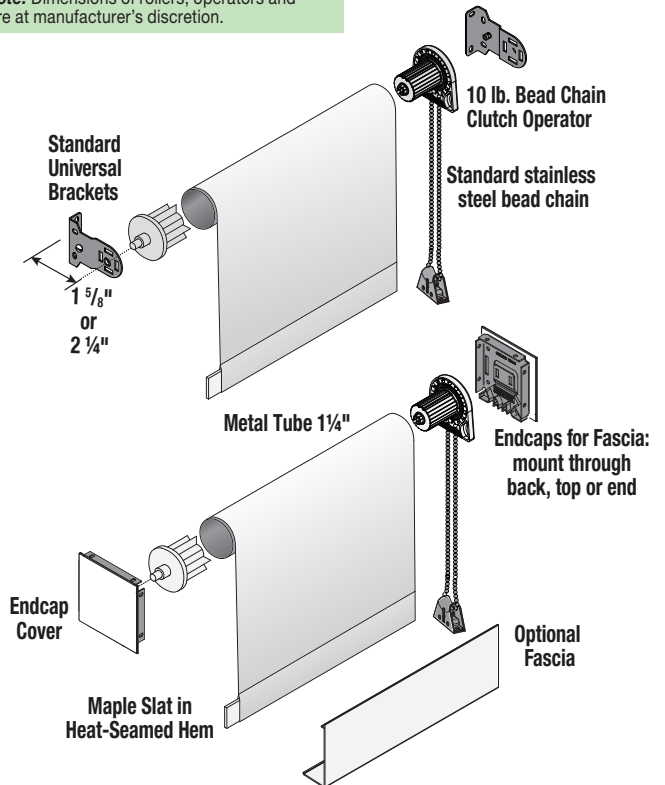
VINYL "L" ANGLE: 1 1/2" x 3/4" x 8' (3.81x1.9x243.84cm) stock length only. Installed using adhesive.

DIMENSIONS: Shades to fit windows with maximum protection from light streaks. Finished length of shades no less than 6" greater than window height. Maximum with approx. 72".

PATENT INFORMATION: available at www.draperinc.com/legal/patents

DOWNLOADABLE 3-PART SPECIFICATIONS: available at www.draperinc.com.

Please Note: Dimensions of rollers, operators and hardware at manufacturer's discretion.



PROJECT: _____

ARCHITECT: _____

CONTRACTOR: _____

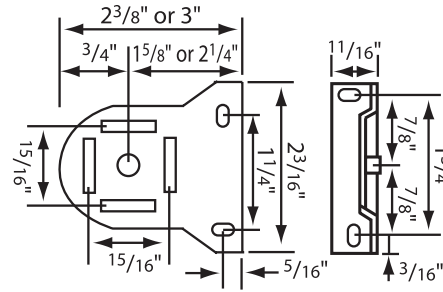
SUPPLIER: _____

DATE: _____ REVISED: _____

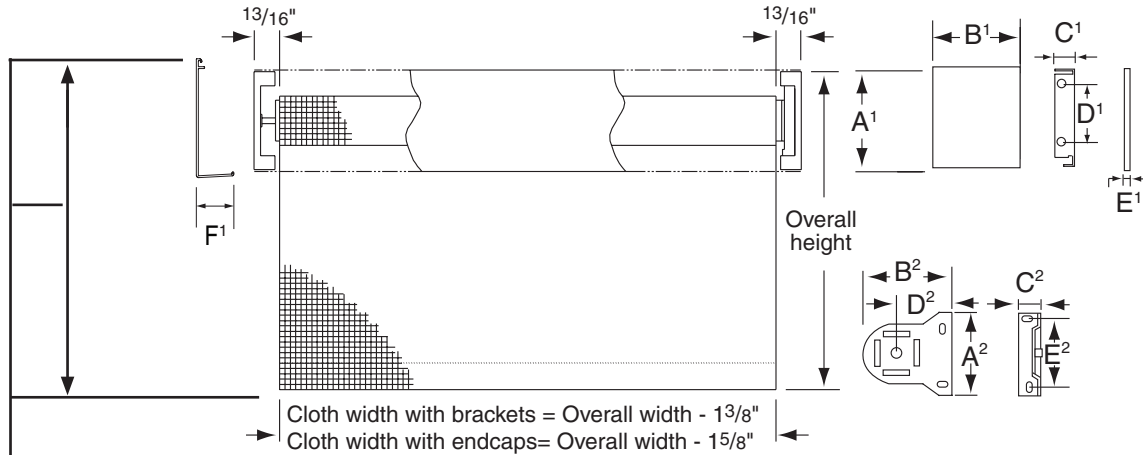


Techmatic Window Shade

Universal Inside/Outside, Right/Left Ceiling/Wall Mounting Bracket Dimensions



Techmatic Dimensions



Above dimensions based upon 20 lb. clutch and $1\frac{1}{2}$ " diameter roller.
* Brackets are supplied with #10 and #20 clutch.

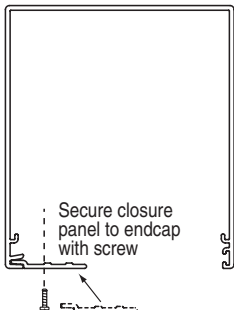
When measuring shade height, remember to include endcaps and fascia or headbox.

	Headbox with Endcaps	Fascia with Endcaps	Brackets*
A ¹	$3\frac{15}{16}"$	$3\frac{7}{8}"$	A ² $2\frac{3}{16}"$
B ¹	$3\frac{7}{16}"$	$3\frac{3}{8}"$	B ² $2\frac{3}{8}"$
C ¹	$\frac{5}{8}"$	$\frac{5}{8}"$	C ² $1\frac{1}{16}"$
D ¹	2"	2"	D ² $1\frac{5}{8}"$
E ¹	$\frac{1}{16}"$	$\frac{1}{16}"$	E ² $1\frac{3}{4}"$
F ¹	$1\frac{3}{16}"$	$1\frac{3}{16}"$	F ² N/A

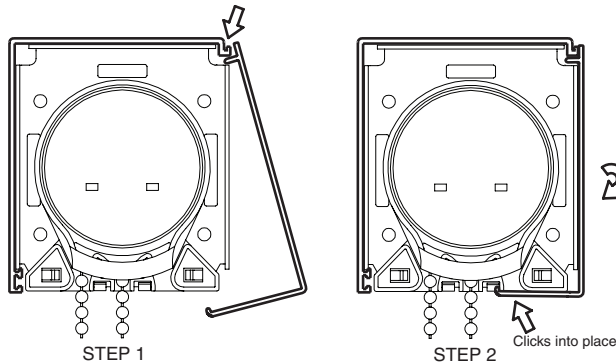
(Fascia Overall Width includes plastic endcap covers)
(If endcap covers are to be excluded, notify Draper at time of quote or order.)

Headbox Styles

Pocket Headbox



Surface Headbox



Pocket D Headbox

