

# Bottom-Up FlexShade® – Motorized

Motorized bottom-up window shade

**FLEXBOTMUP MO**

Please check all appropriate selections and attach room schedule with verified dimensions.

Fabric Series: \_\_\_\_\_

Color Name / Number: \_\_\_\_\_

Openness Factor: \_\_\_\_\_

Please see [Shade Fabric Reference Guide](#) on the [Draper® website](#) for fabric colors and specifications.

**Select Hardware**

**Top Roller**

- Endcaps Only
- Endcaps and Fascia
- Headbox
  - Ceiling/Wall
  - Pocket Style

**Bottom Roller**

- Endcaps Only
- Fascia and Endcaps
- Headbox
  - Ceiling/Wall
  - Pocket Style  
*(without Closure Panel)*

**Select Hardware Finish**

- Clear Anodized *(standard)*
- Black     Ivory
- White     Bronze

**Select Fabric Orientation\***

- Regular Roll *(from back of roller)*
- Reverse Roll *(from front of roller)\**

**Please Note:** Bottom-up FlexShade® is not recommended for inclined installation due to a tendency to sag in the fabric panel.

\* Reverse Roll is accomplished by installing the Bottom-Up FlexShade® backwards in the window. However, Draper needs to know if you are planning to install in this configuration so we can ensure the proper side of the fabric is facing the window.

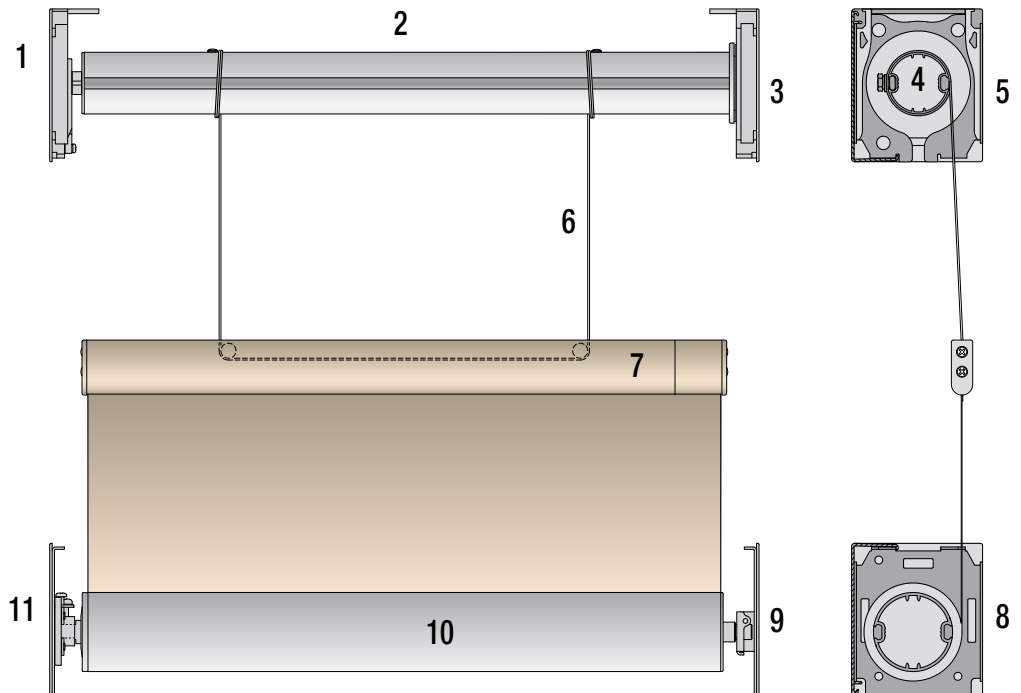
**Select Shade Operating System**

- Standard AC Motors
  - Sonesse® Motor *(standard)*
  - Sonesse® Ultra Motor
- RTS AC Motors
  - Sonesse® RTS Motor
  - Sonesse® Ultra RTS Motor
- 485 AC Motors
  - Sonesse® RS485 Motor
  - Sonesse® Ultra RS485 Motor
- IntelliFlex® I/O 120V I/O Motor
  - 6 NM AC Motor

Sonesse® is a registered trademark of Somfy.

Overview - **Components**

- 1 Idler-end endcap
- 2 Take-up roller
- 3 Operator end endcap
- 4 Motor
- 5 Headbox
- 6 Draw cable
- 7 Hem bar
- 8 Bottom headbox
- 9 Pin end endcap
- 10 Fabric roller
- 11 Spear end endcap



PROJECT: \_\_\_\_\_

ARCHITECT: \_\_\_\_\_

CONTRACTOR: \_\_\_\_\_

SUPPLIER: \_\_\_\_\_

DATE: \_\_\_\_\_ REVISED: \_\_\_\_\_



## Specifications

### HARDWARE

**ROLLERS:** Extruded aluminum or steel. Roller assembly easily removable.

**ROLLER IDLER ASSEMBLY:** Type 6 / 6 injected molded nylon and a zinc-plated cold rolled steel pin. Sliding pin for easy installation and removal of the roller.

**ENDCAPS:** 1028 steel stamping. 2 sizes: 3 ¼" x 3 ¾" (83 x 95 mm) and 4 ½" x 4 ½" (114 x 114 mm). Complete with adapter roller bracket. Installs to wall, ceiling, or jamb. Accepts fascia or headbox.

**ENDCAP COVERS:** Plastic covers snap onto endcaps. Available in ivory, bronze, black, or white to match fascia.

**FABRIC RETAINER:** ¼" (6 mm) OD .17" (4 mm) ID linear low-density polyethylene tubing, inside heat seamed hem.

**HEM BAR:** Machine extruded aluminum, finished to match fascia. Clear anodized (standard), black, white, ivory, or bronze powder coat finish available. Includes built-in pulley assemblies for lifting cables.

**LIFTING CABLE:** 0.046" (1 mm) OD 7x19 strand low-stretch high fatigue nylon-coated cable.

**FASCIA:** "L" or radius cover of extruded aluminum, .060 (2 mm) wall. Assembly snaps onto endcaps without exposed fasteners. Clear anodized (standard), black, white, ivory, or bronze powder coat finish available. Continuous fascia available with coupled units.

**HEADBOX:** Standard consists of fascia, L-shaped back/top cover. Assembly snaps onto endcaps. Optional, for pocket installation, includes a U-shaped back/top/front cover with removable bottom closure panel. Small size: 3¾" x 3¾" (98 x 100 mm). Large size: 4¾" x 4¾" (119 x 119 mm). Some exposed fasteners required.

### Standard AC Motors

#### EQUIPMENT

**SONESSE® 506 (C047.250):** Drive unit inside roller, 4-wire, instantly reversible, lifetime lubricated. Right-hand motor location standard. Left-hand available. Adjustable limit switches, thermal overload protector, and electric brake. Operates on 110-120V AC 1 PH 60 Hz current. Draws 1.2 Amps. Sound levels ≤ 45 dBA.

**SONESSE® 510 (C047.251):** Drive unit inside roller, 4-wire, instantly reversible, lifetime lubricated. Right-hand motor location standard. Left-hand available. Adjustable limit switches, thermal overload protector, and electric brake. Operates on 110-120V AC 1 PH 60 Hz current. Draws 1.67 Amps. Sound levels ≤ 47 dBA.

**SONESSE® ULTRA 506 (C047.244):** Drive unit inside roller, 4-wire, instantly reversible, lifetime lubricated. Right-hand motor location standard. Left-hand available. Adjustable limit switches, thermal overload protector and electric brake. Operates on 110-120V AC 1 PH 60 Hz current. Draws 0.95 Amps. Sound levels ≤ 38 dBA.

### RTS AC MOTORS

#### EQUIPMENT

**SONESSE® RTS 506 (C047.248):** Drive unit inside roller, 3-wire, instantly reversible, lifetime lubricated. Right-hand motor standard. Left-hand available. Built-in radio receiver. Limit switches adjustable by wall switch or remote control. Thermal overload protector and electric brake. Operates on 110-120VAC 1 PH 60 Hz current. Draws 1.2 Amps. Sound levels 44 ≤ dBA.

**SONESSE® RTS 510 (C047.249):** Drive unit inside roller, 3-wire, instantly reversible, lifetime lubricated. Right-hand motor standard. Left-hand available. Built-in radio receiver. Limit switches adjustable by wall switch or remote control. Thermal overload protector and electric brake. Operates on 110-120VAC 1 PH 60 Hz current. Draws 1.66 Amps. Sound levels 47 ≤ dBA.

**SONESSE® ULTRA RTS 506 (C047.245):** Drive unit inside roller, 3-wire, instantly reversible, lifetime lubricated. Right-hand motor standard. Left-hand available. Built-in radio receiver. Limit switches adjustable by wall switch or remote control. Thermal overload protector and electric brake. Operates on 110-120V AC 1 PH 60 Hz current. Draws 0.95 Amps. Sound levels ≤ 38 dBA.

### 485 AC Motors

#### EQUIPMENT

**SONESSE® RS485 506 (C047.246):** Drive unit inside roller, 3-wire, instantly reversible, lifetime lubricated. Right-hand motor location standard. Left-hand available. Built-in encoder and low-voltage controller with data cable. Limits adjustable using limit setting tool or motor configuration software. Thermal overload protector and electric brake. Operates on 110-120V AC 1 PH 60 Hz current. Draws 1.2 Amps.

**SONESSE® RS485 510 (C047.247):** Drive unit inside roller, 3-wire, instantly reversible, lifetime lubricated. Right-hand motor location standard. Left-hand available. Built-in encoder and low-voltage controller with data cable. Limits adjustable using limit setting tool or motor configuration software. Thermal overload protector and electric brake. Operates on 110-120V AC 1 PH 60 Hz current. Draws 1.67 Amps.

**SONESSE® ULTRA RS485 506 (C047.244):** Drive unit inside roller, 3-wire, instantly reversible, lifetime lubricated. Right-hand motor location standard. Left-hand available. Adjustable limit switches, thermal overload protector and electric brake. Operates on 110-120V AC 1 PH 60 Hz current. Draws 0.95 Amps. Sound levels ≤ 38dB.

### IntelliFlex I/O Motors

#### EQUIPMENT

**INTELLIFLEX I/O 6NM MOTOR (C047.300):** Drive unit inside roller, 3-wire, instantly reversible, lifetime lubricated. Right-hand or left-hand operation selectable during programming. Adjustable electronic limit switches, thermal overload protector, and electric brake. Operates on 110-120V AC 1 PH 60 Hz current. Draws 1.0 Amps. Sound levels ≤ 42 dB.

**MOTOR LIMIT TOOL (C202.030):** Used to program the limits, operating direction, and preset stops for individual or networks of Draper intelligent motors.

**NETWORK DEVICE CONNECTOR (C156.267):** Used to connect IntelliFlex I/O devices into a network. Distributes both power and communication between devices.

**WIRED WALL SWITCH (SINGLE ZONE C112.161; DUAL ZONE C112.162):** Intelligent low-voltage control device providing IntelliFlex I/O-wall user interface. Communicates directly with intelligent motors. Uses priority-based command structure which allows multiple switches to have different levels of authority.

**WIRELESS REMOTE (C156.270):** Display allows up to 32 channels. Touch control to position shades. Can be used as a simple commissioning tool.

**WIRELESS NETWORK GATEWAY (C156.268):** Required to use the wireless remote in a wired network.

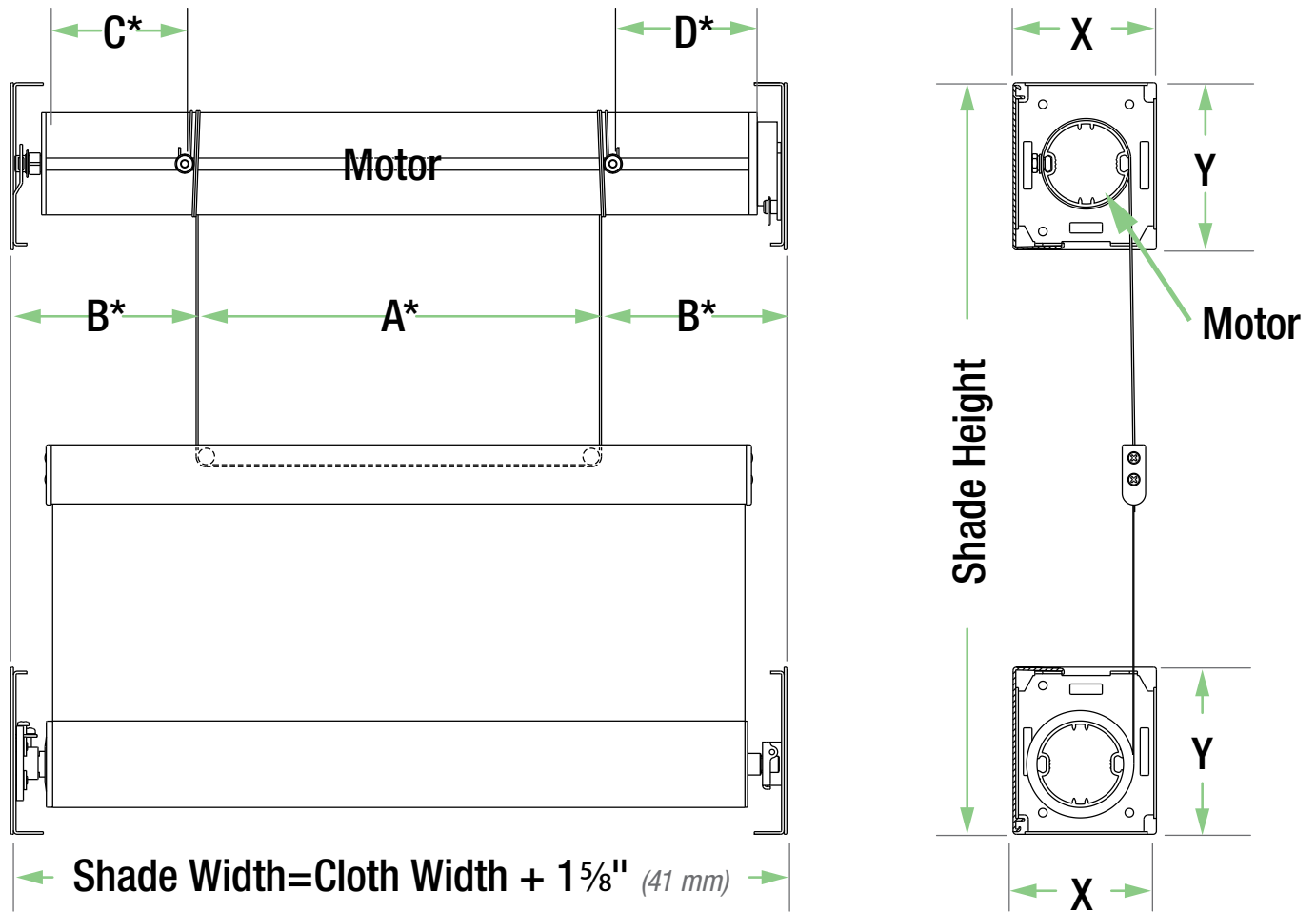
**AV GATEWAY (C156.269):** Used to integrate with 3rd party control systems. Supports RS-232 and RS-485. Contact closure inputs. Low-voltage trigger. IR receiver input. LCD display allows for commissioning of serial groups.

**MOTOR LIMIT TOOL (C156.273):** Used to provide programming of operational direction, upper and lower travel limits, and preset stops for individual or groups of Draper intelligent motors within a network.

**CONTACT CLOSURE INTERFACE (C156.273):** Used to connect simple switches or other contact closure devices into the network. Up to 6 contacts. Push buttons for commissioning.

**Please Note:** Dimensions of rollers, operators, and hardware at manufacturer's discretion.

## Dimensions—Motorized



\*These dimensions are different for each shade and are provided by Draper with your order.

Dimension "A" is a vertical cable spacing.

Dimension "B" is the distance from the vertical cable spacing to the vertical edge of the shade.

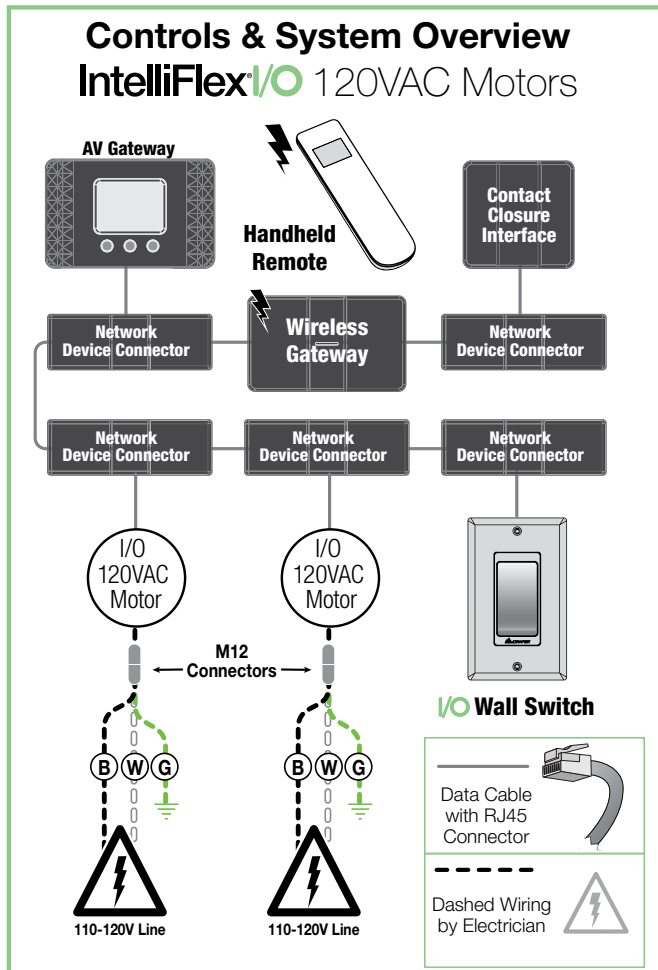
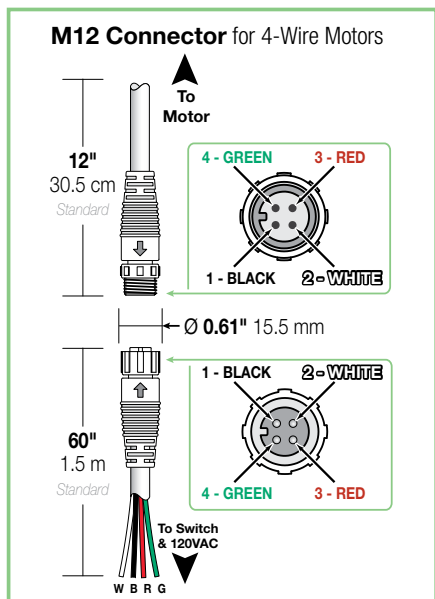
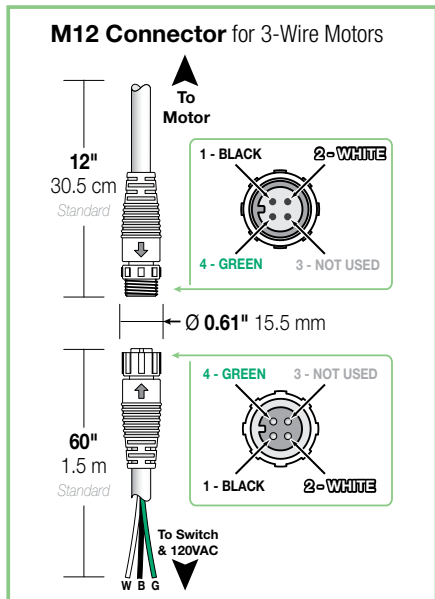
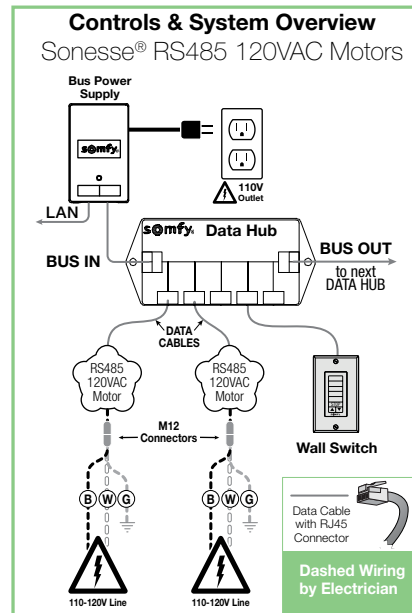
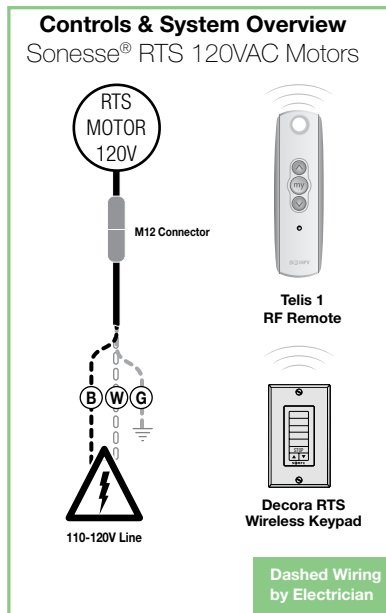
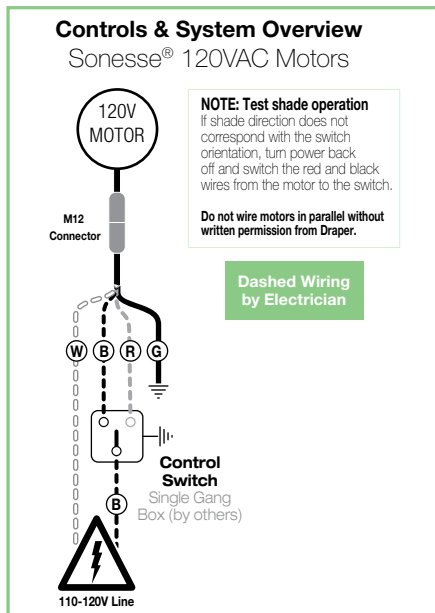
Dimension "C" is the distance from the Idler-End of the tube to the center of the cable attachment stud.

Dimension "D" is the distance from the Operator-End of the tube the center of the cable attachment stud.

| Dimension | Large Hardware   | Small Hardware   |
|-----------|------------------|------------------|
| X***      | 4 1/16" (119 mm) | 3 7/16" (87 mm)  |
| Y***      | 4 1/16" (119 mm) | 3 5/16" (100 mm) |

\*\*\*These dimensions are for the endcap covers. Endcap, fascia, or headbox dimensions fall within this dimension.

## Wiring Diagrams



**Caution:** Do not wire motorized units in parallel without written consent from Draper®.

**Please Note:** A Draper Motor Test Cable (Part# 503109) and M12 Pigtail (Part# C107.089.60) are recommended for temporary power for testing and limit setting. Other motor cables available upon request:

- 5' (1.5 m) cable with female M12 Connector
- 3' (0.91 m) cable with female M12 Connector
- 6' (1.83 m) cable with female M12 Connector
- 10' (3 m) cable with female M12 Connector
- 24' (7.32 m) cable with female M12 Connector

