

# Bottom-Up Flexshade® – Motorized Dual Roller

Motorized bottom-up shade with pulleys

## SUBMITTAL

### TECHNICAL INFO

#### FLEXBOTMUP MO

Please check all appropriate selections and attach room schedule with verified dimensions.

Fabric Series: \_\_\_\_\_

Color Name / Number: \_\_\_\_\_

Openness Factor: \_\_\_\_\_

Please see [Shade Fabric Reference Guide](#) on the [Draper® website](#) for fabric colors and specifications.

#### Select Hardware

##### Top Roller

- Endcaps Only
- Endcaps and Fascia
- Headbox
  - Ceiling/Wall
  - Pocket Style

##### Bottom Roller

- Endcaps Only
- Fascia and Endcaps
- Headbox
  - Ceiling/Wall
  - Pocket Style  
*(without closure panel)*

#### Select Hardware Finish

- Clear Anodized *(standard)*
- Black     Ivory
- White     Bronze

#### Select Fabric Orientation\*

- Regular Roll *(from back of roller)*
- Reverse Roll *(from front of roller)\**

**Please Note:** Bottom-up FlexShade® is not recommended for inclined installation.

\*Reverse Roll is accomplished by installing the Bottom-Up FlexShade® backwards in the window. Please communicate any plans to install in this configuration to ensure correct fabric orientation.

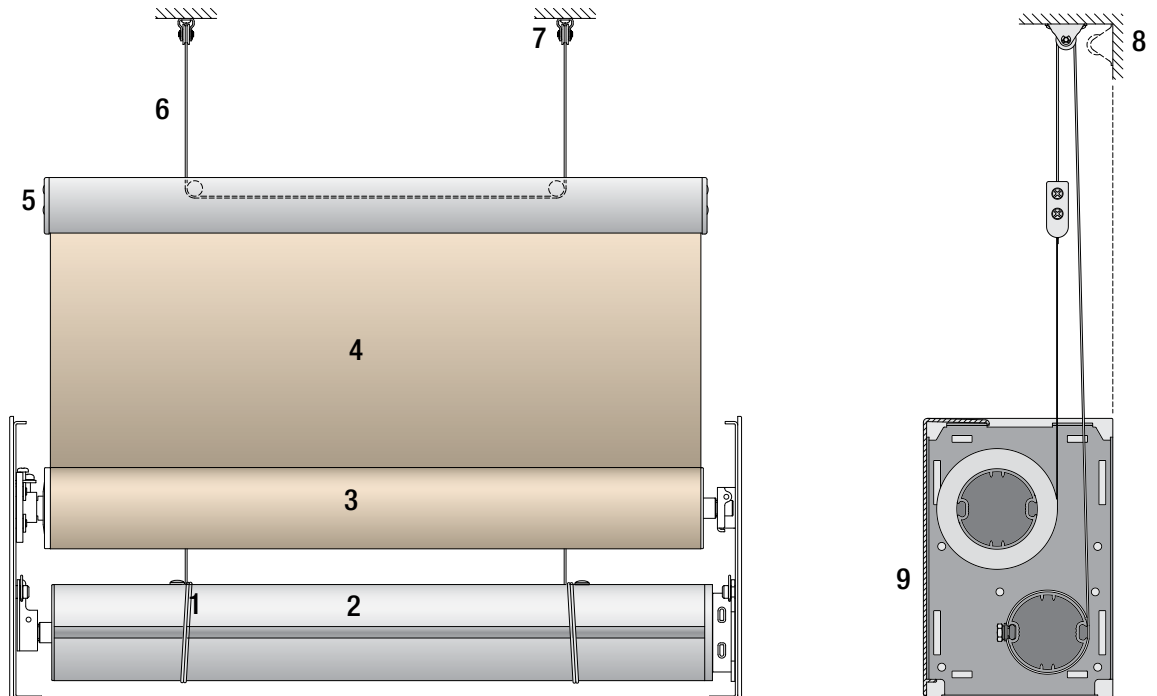
#### Select Shade Operating System

- Standard AC Motors
  - Sonesse® Motor *(standard)*
  - Sonesse® Ultra Motor
- RTS AC Motors
  - Sonesse® RTS Motor
  - Sonesse® Ultra RTS Motor
- 485 AC Motors
  - Sonesse® RS485 Motor
  - Sonesse® Ultra RS485 Motor
- IntelliFlex® I/O 120V I/O Motor
  - 6 NM AC Motor

Sonesse® is a registered trademark of Somfy.

#### Overview - Components

- 1 Cable attachment
- 2 Front *(cable)* roller
- 3 Rear *(fabric)* roller
- 4 Fabric panel
- 5 Hem bar
- 6 Draw cable
- 7 Pulley
- 8 Alternate pulley attachment location
- 9 Dual roller headbox



Draper, Inc. | 411 S. Pearl St. Spiceland, IN 47385  
draperinc.com | 765.987.7999 | 800.238.7999

© 2023 All Rights Reserved | FORM: BU\_FSMO-Dual\_Sub19

PROJECT: \_\_\_\_\_

ARCHITECT: \_\_\_\_\_

CONTRACTOR: \_\_\_\_\_

SUPPLIER: \_\_\_\_\_

DATE: \_\_\_\_\_ REVISED: \_\_\_\_\_

## Specifications

### HARDWARE

**ENDCAPS:** 1028 steel stamping. Complete with adapter roller bracket. Installs to wall or ceiling. Accepts fascia.

**ROLLERS:** Extruded aluminum or steel. Roller assembly easily removable.

**ROLLER IDLER ASSEMBLY:** Type 6 / 6 injection molded nylon and a spring-loaded or sliding pin for easy installation and removal of the roller.

**FASCIA:** L-shaped cover of extruded aluminum, .060 (2 mm) wall. Assembly snaps onto endcaps without exposed fasteners. Clear anodized (*standard*), black, white, ivory, or bronze powder coat finish available.

**FABRIC RETAINER:** ¼" (6 mm) OD, .17" (4 mm) ID linear low-density polyethylene tubing, inside heat seamed hem.

**HEM BAR:** Machine extruded aluminum, finished to match fascia. Clear anodized (*standard*), black, white, ivory, or bronze powder coat finish available. Includes built-in pulley assemblies for lifting cables.

**LIFTING CABLE:** 0.046" (1 mm) OD, 7x19 strand low-stretch high fatigue nylon-coated cable.

**SHADE FABRICS:** Please see Draper's Shade Fabric Reference Sheet for specifications.

### Standard AC Motors

#### EQUIPMENT

**SONESSE® 506 (C047.250):** Drive unit inside roller, 4-wire, instantly reversible, lifetime lubricated. Right-hand motor location standard. Left-hand available. Adjustable limit switches, thermal overload protector, and electric brake. Operates on 110-120V AC 1 PH 60 Hz current. Draws 1.2 Amps. Sound level ≤ 45 dBA.

**SONESSE® 510 (C047.251):** Drive unit inside roller, 4-wire, instantly reversible, lifetime lubricated. Right-hand motor location standard. Left-hand available. Adjustable limit switches, thermal overload protector, and electric brake. Operates on 110-120V AC 1 PH 60 Hz current. Draws 1.67 Amps. Sound levels ≤ 47 dBA.

**SONESSE® ULTRA 506 (C047.244):** Drive unit inside roller, 4-wire, instantly reversible, lifetime lubricated. Right-hand motor location standard. Left-hand available. Adjustable limit switches, thermal overload protector, and electric brake. Operates on 110-120V AC 1 PH 60 Hz current. Draws 0.95 Amps. Sound levels ≤ 38 dBA.

### RTS AC MOTORS

#### EQUIPMENT

**SONESSE® RTS 506 (C047.248):** Drive unit inside roller, 3-wire, instantly reversible, lifetime lubricated. Right-hand motor standard. Left-hand available. Built-in radio receiver. Limit switches adjustable by wall switch or remote control. Thermal overload protector and electric brake. Operates on 110-120VAC 1 PH 60 Hz current. Draws 1.2 Amps. Sound levels ≤ 44 dBA.

**SONESSE® RTS 510 (C047.249):** Drive unit inside roller, 3-wire, instantly reversible, lifetime lubricated. Right-hand motor standard. Left-hand available. Built-in radio receiver. Limit switches adjustable by wall switch or remote control. Thermal overload protector and electric brake. Operates on 110-120VAC 1 PH 60 Hz current. Draws 1.66 Amps. Sound levels ≤ 47 dBA.

**SONESSE® ULTRA RTS 506 (C047.245):** Drive unit inside roller, 3-wire, instantly reversible, lifetime lubricated. Right-hand motor standard. Left-hand available. Built-in radio receiver. Limit switches adjustable by wall switch or remote control. Thermal overload protector and electric brake. Operates on 110-120V AC 1 PH 60 Hz current. Draws 0.95 Amps. Sound levels ≤ 38 dBA.

### 485 AC Motors

#### EQUIPMENT

**SONESSE® RS485 506 (C047.246):** Drive unit inside roller, 3-wire, instantly reversible, lifetime lubricated. Right-hand motor location standard. Left-hand available. Built-in encoder and low-voltage controller with data cable. Limits adjustable using limit setting tool or motor configuration software. Thermal overload protector and electric brake. Operates on 110-120V AC 1 PH 60 Hz current. Draws 1.2 Amp.

**SONESSE® RS485 510 (C047.247):** Drive unit inside roller, 3-wire, instantly reversible, lifetime lubricated. Right-hand motor location standard. Left-hand available. Built-in encoder and low-voltage controller with data cable. Limits adjustable using limit setting tool or motor configuration software. Thermal overload protector and electric brake. Operates on 110-120V AC 1 PH 60 Hz current. Draws 1.67 Amps.

**SONESSE® ULTRA RS485 506 (C047.244):** Drive unit inside roller, 4-wire, instantly reversible, lifetime lubricated. Right-hand motor location standard. Left-hand available. Adjustable limit switches, thermal overload protector, and electric brake. Operates on 110-120V AC 1 PH 60 Hz current. Draws 0.95 Amps. Sound levels ≤ 38dB.

### IntelliFlex® I/O Motors

#### EQUIPMENT

**INTELLIFLEX® I/O 6NM MOTOR (C047.300):** Drive unit inside roller, 3-wire, instantly reversible, lifetime lubricated. Right-hand or left-hand operation selectable during programming. Adjustable electronic limit switches, thermal overload protector, and electric brake. Operates on 110-120V AC 1 PH 60 Hz current. Draws 1.0 Amps. Sound levels ≤ 42 dB.

**MOTOR LIMIT TOOL (C202.030):** Used to program the limits, operating direction, and preset stops for individual or networks of Draper intelligent motors.

**NETWORK DEVICE CONNECTOR (C156.267):** Used to connect IntelliFlex I/O devices into a network. Distributes both power and communication between devices.

**WIRED WALL SWITCH (SINGLE ZONE C112.161; DUAL ZONE C112.162):** Intelligent low-voltage control device providing IntelliFlex I/O-wall user interface. Communicates directly with intelligent motors. Uses priority based command structure which allows multiple switches to have different levels of authority.

**WIRELESS REMOTE (C156.270):** Display allows up to 32 channels. Touch control to position shades. Can be used as a simple commissioning tool.

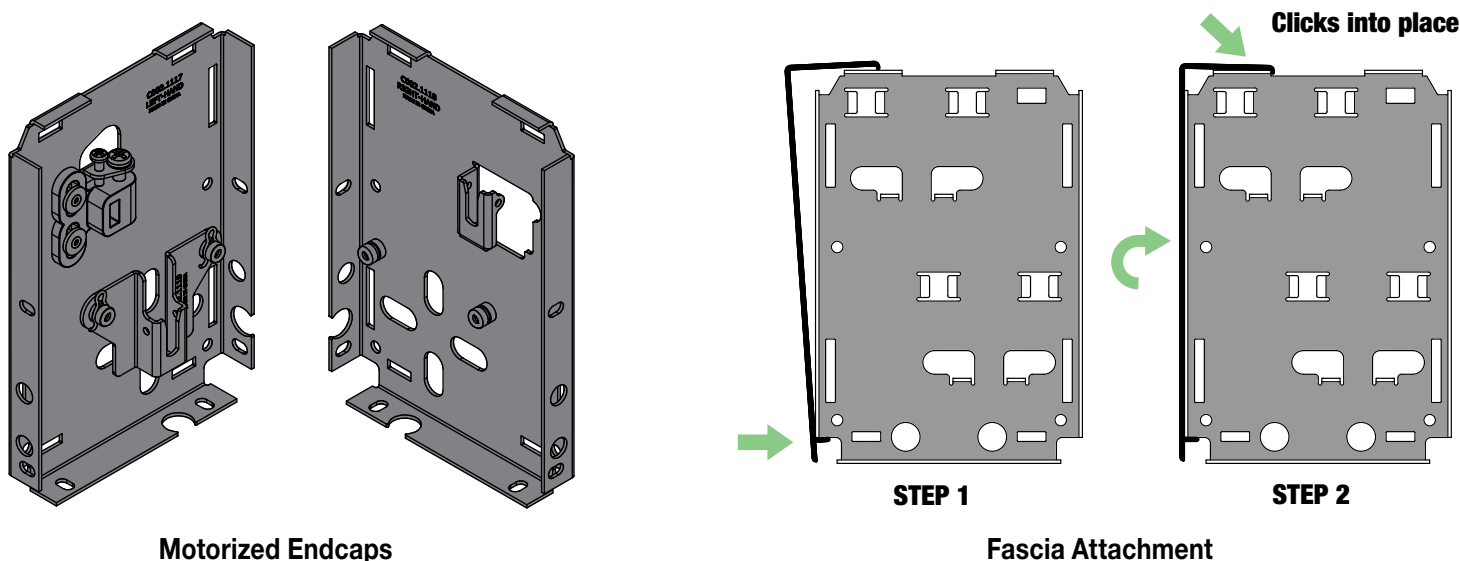
**WIRELESS NETWORK GATEWAY (C156.268):** Required to use the wireless remote in a wired network.

**AV GATEWAY (C156.269):** Used to integrate with third party control systems. Supports RS-232 and RS-485. Contact closure inputs. Low-voltage trigger. IR receiver input. LCD display allows for commissioning of serial groups.

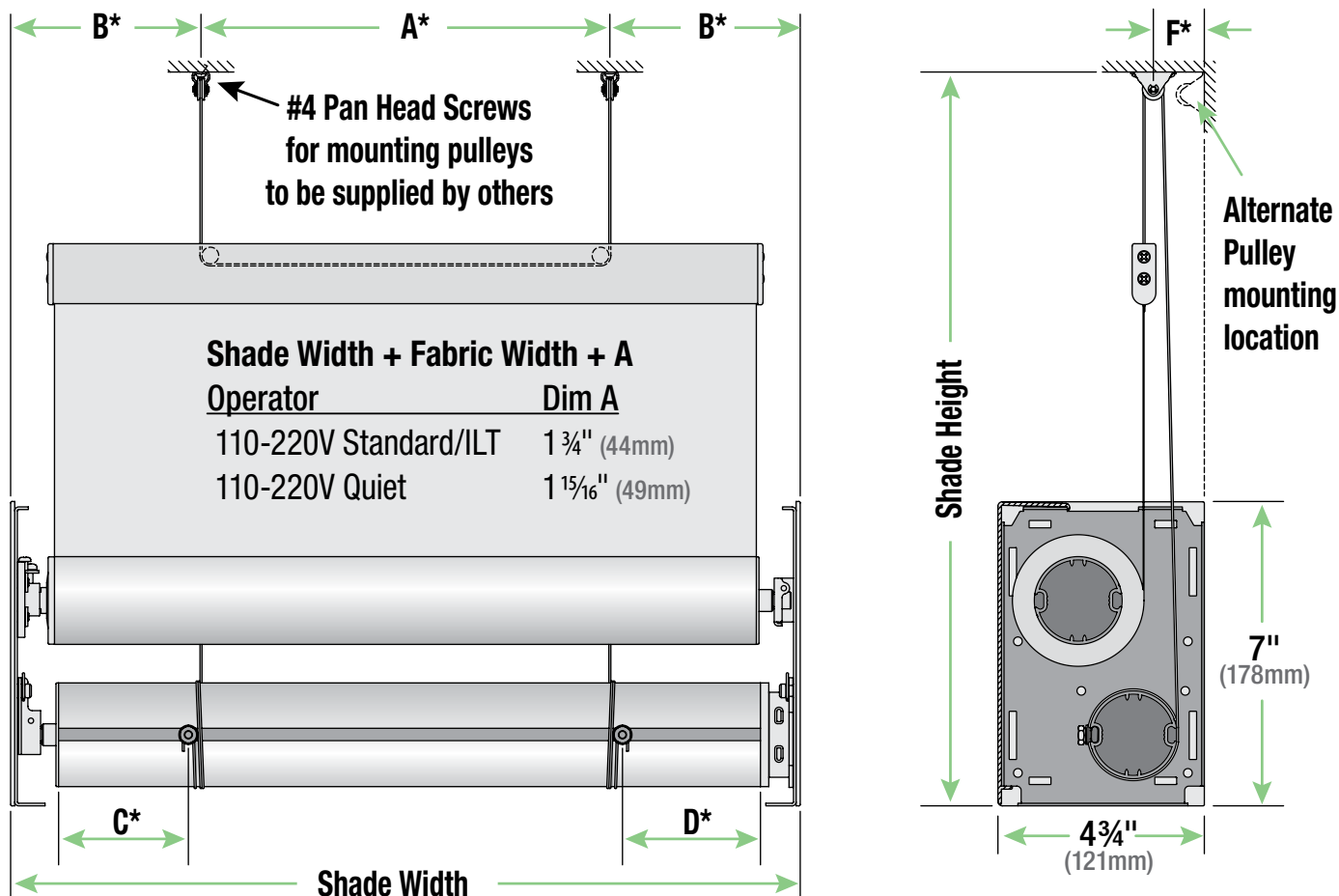
**MOTOR LIMIT TOOL (C156.273):** Used to provide programming of operational direction, upper and lower travel limits, and preset stops for individual or groups of Draper intelligent motors within a network.

**CONTACT CLOSURE INTERFACE (C156.273):** Used to connect simple switches or other contact closure devices into the network. Up to 6 contacts. Push buttons for commissioning.

**Please Note:** Dimensions of rollers, operators, and hardware at manufacturer's discretion.



## Dimensions — Motorized Dual Roller



\*These dimensions are different for each shade and are provided by Draper with your order.

Dimension "A" is a vertical cable spacing.

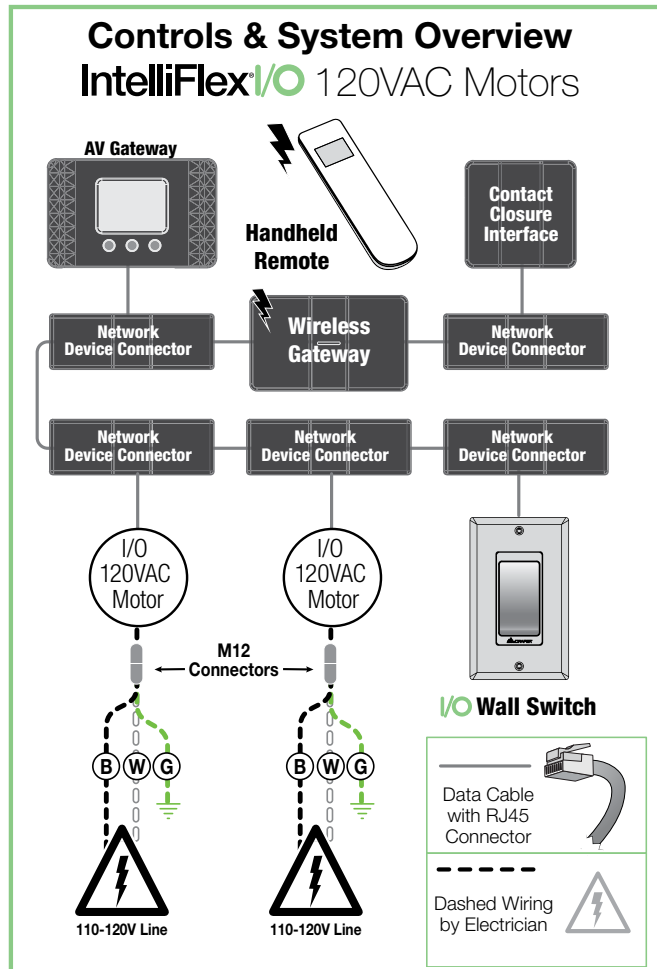
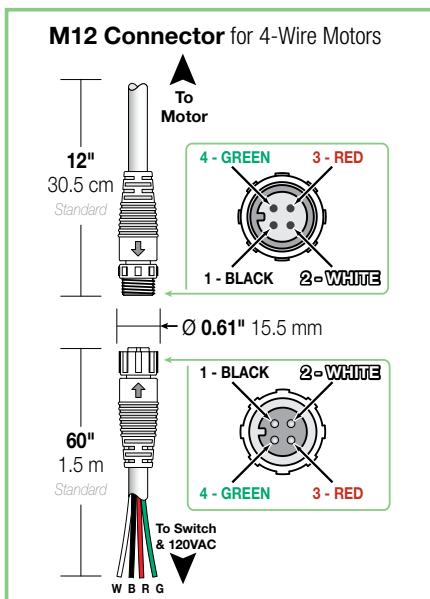
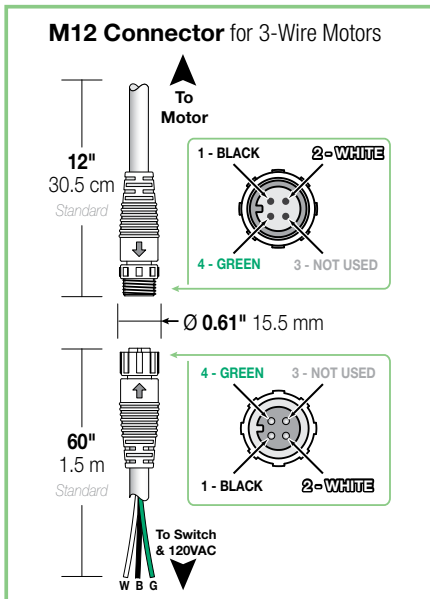
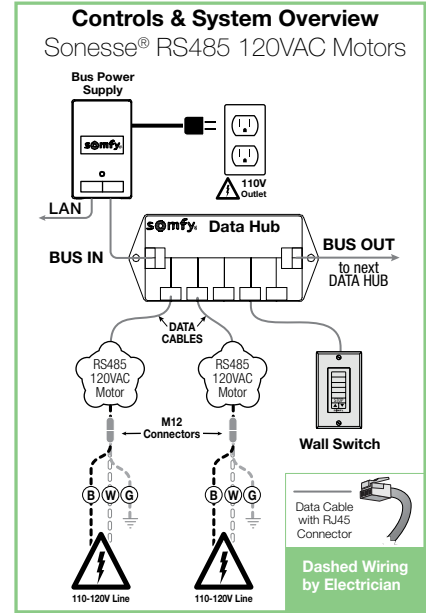
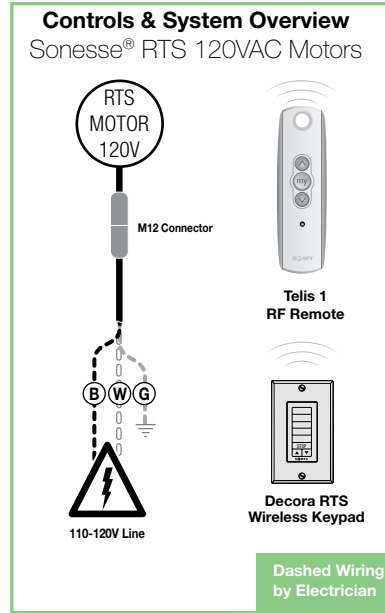
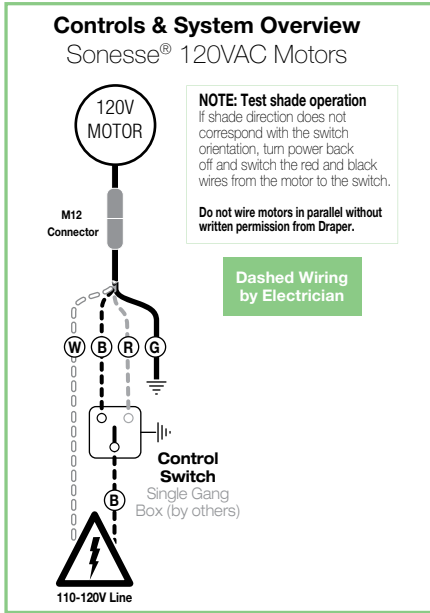
Dimension "B" is the distance from the vertical cable spacing to the vertical edge of the shade.

Dimension "C" is the distance from the Idler-End of the tube to the center of the cable attachment stud.

Dimension "D" is the distance from the Operator-End of the tube the center of the cable attachment stud.

Dimension "F" is the distance from the wall/jamb to the tube the center of the cable pulley.

## Wiring Diagrams



**⚠ Caution:**  
Do not wire motorized units in parallel without written consent from Draper®.

**Please Note:**  
A Draper Motor Test Cable (Part# 503109) and M12 Pigtail (Part# C107.089.60) are recommended for temporary power for testing and limit setting. Other motor cables available upon request:

- 5' (1.5 m) cable with female M12 Connector
- 3' (0.91 m) cable with female M12 Connector
- 6' (1.83 m) cable with female M12 Connector
- 10' (3 m) cable with female M12 Connector
- 24' (7.32 m) cable with female M12 Connector

Sonesse is a registered trademark of Somfy.

