

Angled Coupler for Motorized FlexShade®

How to Measure for Motorized FlexShade with Angled Coupler:

REQUIRED
for all installations.

Wall Angle (90° to 270°)
Measure wall angles using a digital angle finder (Protractor). Please provide **ONLY** Positive angles between 90° and 270°. **EXAMPLES SHOWN AT RIGHT.**

Motor Shade Panel Width
Motor Shade Panel Width is the distance from intersection of two (2) walls to **OUTSIDE OF MOTOR ENDCAP COVER.**

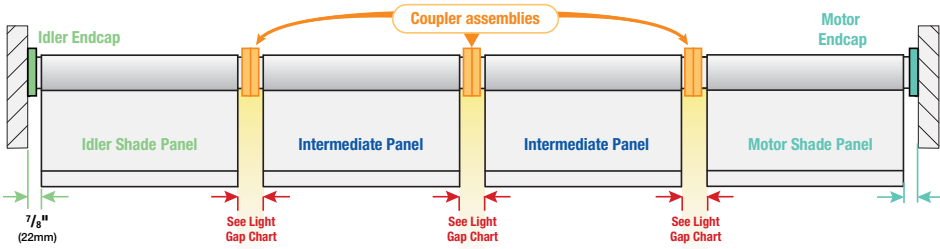
Idler Shade Panel Width
Idler Shade Panel Width is the distance from the intersection of two (2) walls to the **OUTSIDE OF IDLER ENDCAP COVER.**

INSIDE ANGLES: 90° to 179°

OUTSIDE ANGLES: 181° to 270°

OPTIONAL

Intermediate Shade Panel(s) Width(s)
Intermediate Shade Panel Width(s) are measured from intersecting point of two (2) walls to intersecting of two (2) walls; Or
The **CENTER** of a Coupler Bracket to the **CENTER** of another Coupler Bracket. Configurations will vary depending on site conditions.



Light Gap dimension will vary depending on fabric orientation (e.g. - reverse roll). See chart below.

MOTOR TYPE	Roller Diameter			
	2"	50.8mm	3"	76.2mm
Round-Head	1 5/16"	23.8mm	1"	25.4mm
Square-Head	1 1/16"	27mm	1 1/4"	31.8mm
Star-Head	1 3/16"	30.2mm	1 3/8"	35mm
Gaposa	1 1/16"	27mm	1 1/4"	27mm

LIGHT GAP for INSIDE WALL ANGLES: 90° to 179°

Angle°	2" Roller				3" Roller				
	Regular Roll		Reverse Roll		Regular Roll		Reverse Roll		
	Inches	mm	Inches	mm	Inches	mm	Inches	mm	
175°	2.7"	68.6	2.5"	63.5	175°	2.8"	71.1	2.5"	63.5
170°	2.9"	73.7	2.5"	63.5	170°	3"	76.2	2.5"	63.5
165°	3.1"	78.7	2.5"	63.5	165°	3.2"	81.3	2.4"	63.5
160°	3.2"	81.3	2.5"	63.5	160°	3.5"	88.9	2.4"	63.5
155°	3.4"	86.4	2.5"	63.5	155°	3.7"	94.0	2.3"	58.4
150°	3.6"	91.4	2.5"	63.5	150°	3.9"	99.1	2.3"	58.4
145°	3.7"	94.0	2.5"	63.5	145°	4.1"	104.1	2.2"	55.9
140°	3.9"	99.1	2.5"	63.5	140°	4.3"	109.2	2.1"	53.3
135°	4"	101.6	2.4"	61	135°	4.5"	114.3	2.1"	53.3
130°	4.2"	106.7	2.4"	61	130°	4.6"	116.8	2"	50.8
125°	4.3"	109.2	2.4"	61	125°	4.8"	121.9	1.9"	48.3
120°	4.4"	111.8	2.4"	61	120°	5"	127	1.9"	48.3
115°	4.6"	116.8	2.3"	58.4	115°	5.1"	129.5	1.8"	45.7
110°	4.7"	119.4	2.3"	58.4	110°	5.3"	134.6	1.7"	43.2
105°	4.8"	121.9	2.2"	55.9	105°	5.4"	137.2	1.6"	40.6
100°	4.9"	124.5	2.2"	55.9	100°	5.5"	139.7	1.5"	38.1
95°	4.9"	124.5	2.1"	53.3	95°	5.7"	144.8	1.5"	38.1
90°	5"	127	2.1"	53.3	90°	5.8"	147.3	1.4"	35.6

LIGHT GAP for OUTSIDE WALL ANGLES 181° to 270°

Angle°	2" Roller				3" Roller				
	Regular Roll		Reverse Roll		Regular Roll		Reverse Roll		
	Inches	mm	Inches	mm	Inches	mm	Inches	mm	
185	2.5"	63.5	2.7"	68.6	185	2.5"	63.5	2.8"	71.1
190	2.5"	63.5	2.9"	73.7	190	2.5"	63.5	3"	76.2
195	2.5"	63.5	3.1"	78.7	195	2.4"	63.5	3.2"	81.3
200	2.5"	63.5	3.2"	81.3	200	2.4"	63.5	3.5"	88.9
205	2.5"	63.5	3.4"	86.4	205	2.3"	58.4	3.7"	94.0
210	2.5"	63.5	3.6"	91.4	210	2.3"	58.4	3.9"	99.1
215	2.5"	63.5	3.7"	94.0	215	2.2"	55.9	4.1"	104.1
220	2.5"	63.5	3.9"	99.1	220	2.1"	53.3	4.3"	109.2
225	2.4"	61	4"	101.6	225	2.1"	53.3	4.5"	114.3
230	2.4"	61	4.2"	106.7	230	2"	50.8	4.6"	116.8
235	2.4"	61	4.3"	109.2	235	1.9"	48.3	4.8"	121.9
240	2.4"	61	4.4"	111.8	240	1.9"	48.3	5"	127
245	2.3"	58.4	4.6"	116.8	245	1.8"	45.7	5.1"	129.5
250	2.3"	58.4	4.7"	119.4	250	1.7"	43.2	5.3"	134.6
255	2.2"	55.9	4.8"	121.9	255	1.6"	40.6	5.4"	137.2
260	2.2"	55.9	4.9"	124.5	260	1.5"	38.1	5.5"	139.7
265	2.1"	53.3	4.9"	124.5	265	1.5"	38.1	5.7"	144.8
270	2.1"	53.3	5"	127	270	1.4"	35.6	5.8"	147.3



PROJECT: _____

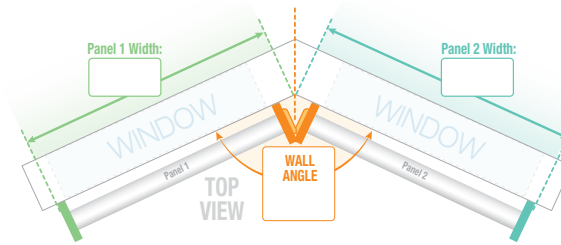
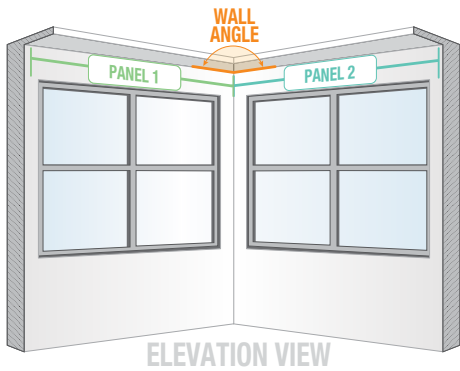
ARCHITECT: _____

CONTRACTOR: _____

SUPPLIER: _____

DATE: _____ REVISED: _____

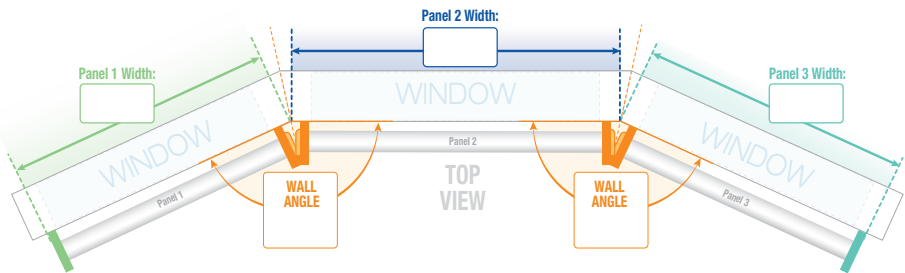
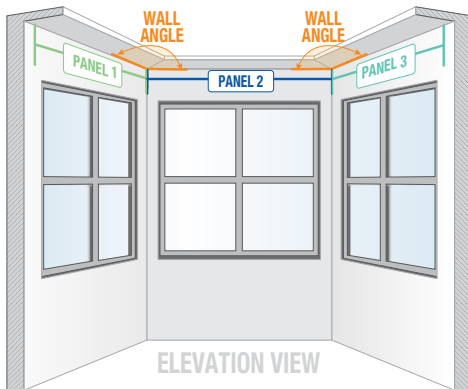
2 Shade Panels with 1 Inside Wall Angle



Provide Panel Widths in Inches

Panel 1 Width:	<input type="text"/>	Wall Angle <input type="text"/>
Panel 2 Width:	<input type="text"/>	

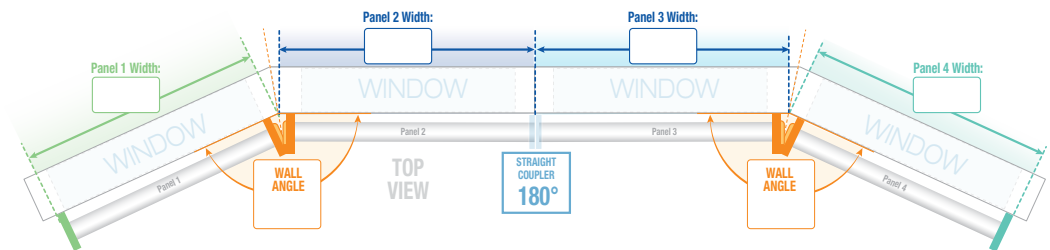
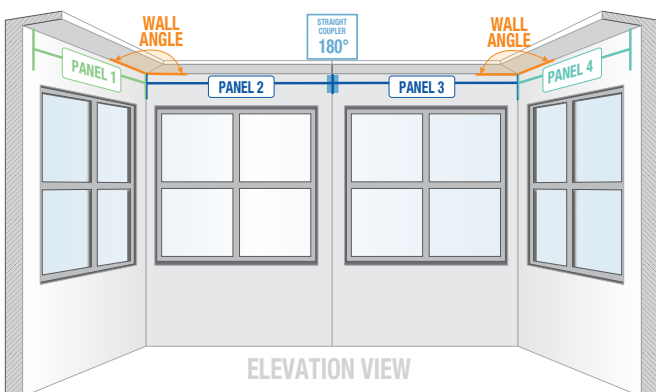
3 Shade Panels with 2 Inside Wall Angles



Provide Panel Widths in Inches

Panel 1 Width:	<input type="text"/>	Wall Angles <input type="text"/>
Panel 2 Width:	<input type="text"/>	
Panel 3 Width:	<input type="text"/>	

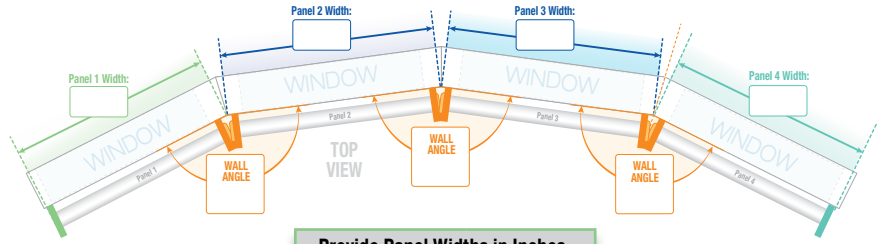
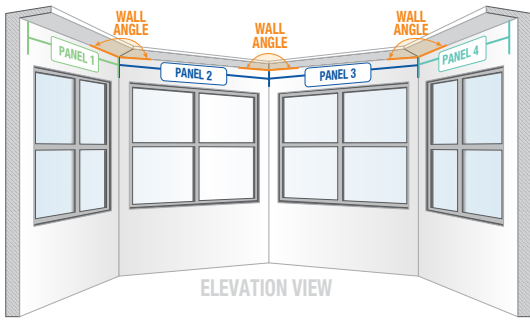
4 Shade Panels with 2 Inside Wall Angles and 1 Straight Coupler



Provide Panel Widths in Inches

Panel 1 Width:	<input type="text"/>	Wall Angles 180°
Panel 2 Width:	<input type="text"/>	
Panel 3 Width:	<input type="text"/>	
Panel 4 Width:	<input type="text"/>	

4 Shade Panels with 3 Inside Wall Angles

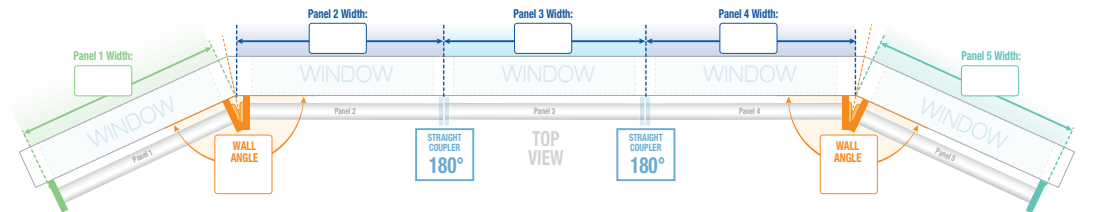
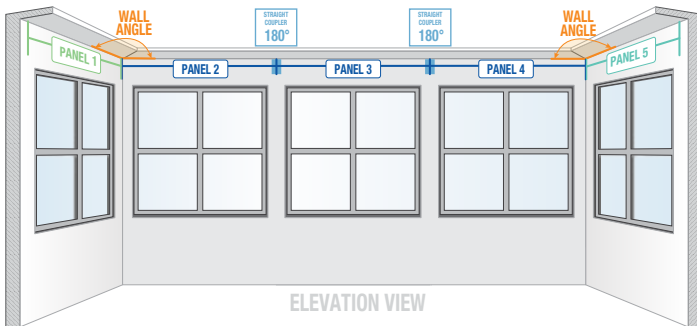


Provide Panel Widths in Inches

Panel 1 Width:	
Panel 2 Width:	
Panel 3 Width:	
Panel 4 Width:	

Wall Angles

5 Shade Panels with 4 Inside Wall Angles and 2 Straight Couplers



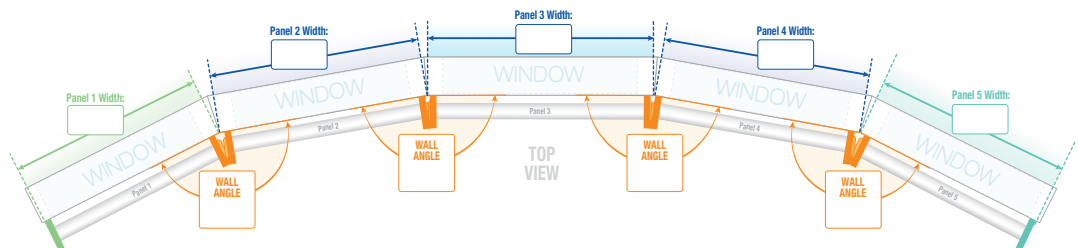
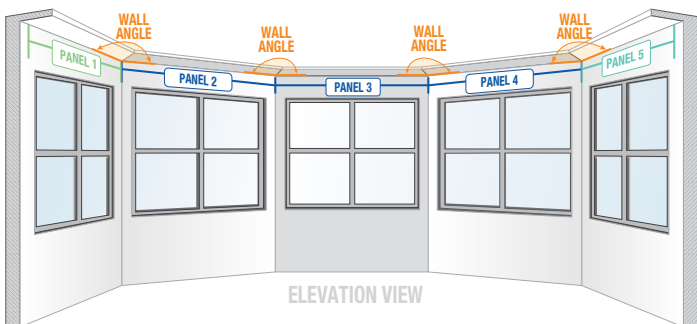
Provide Panel Widths in Inches

Panel 1 Width:	
Panel 2 Width:	
Panel 3 Width:	
Panel 4 Width:	
Panel 5 Width:	

Wall Angles

180°
180°

5 Shade Panels with 4 Inside Wall Angles

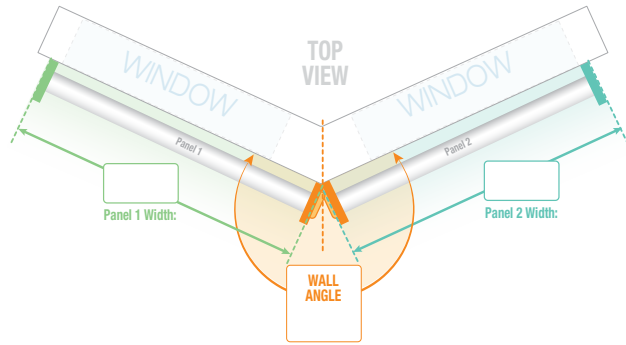
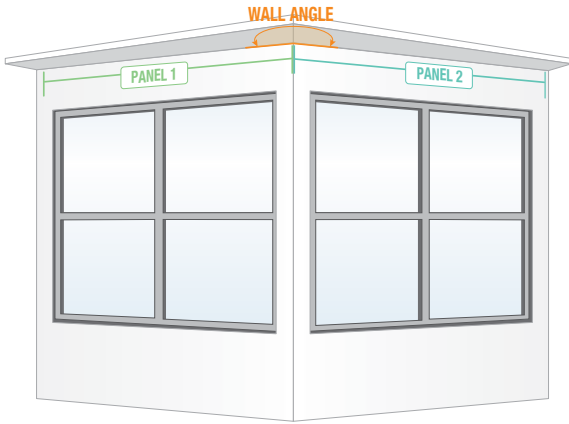


Provide Panel Widths in Inches

Panel 1 Width:	
Panel 2 Width:	
Panel 3 Width:	
Panel 4 Width:	
Panel 5 Width:	

Wall Angles

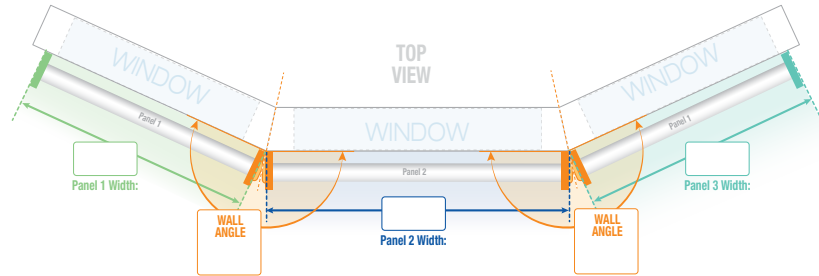
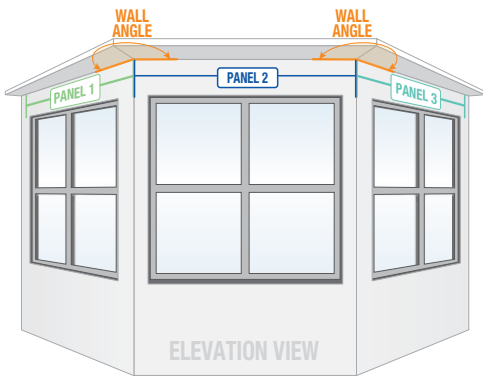
2 Shade Panels
with 1 Outside Wall Angle



Provide Panel Widths in Inches	
Panel 1 Width:	<input type="text"/>
Panel 2 Width:	<input type="text"/>

Wall Angles
<input type="text"/>

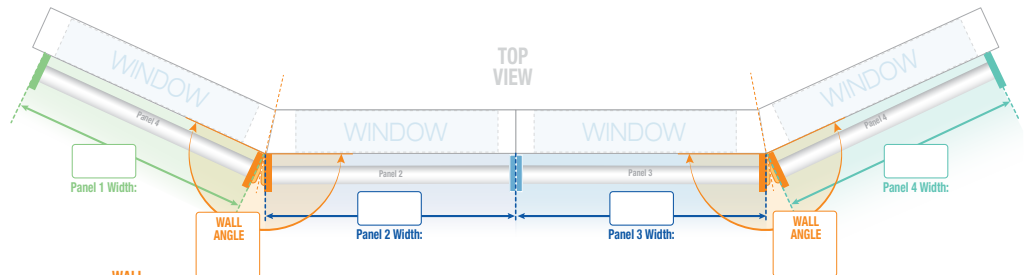
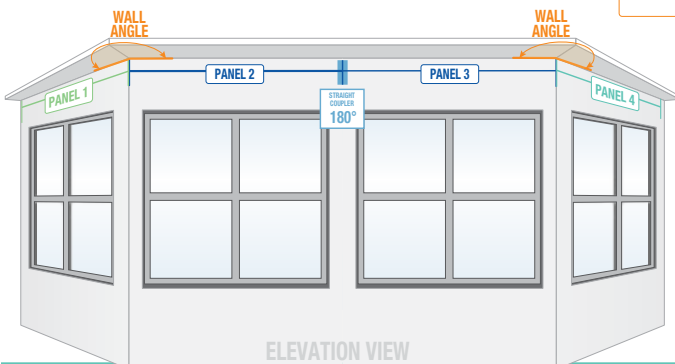
3 Shade Panels
with 2 Outside Wall Angles



Provide Panel Widths in Inches	
Panel 1 Width:	<input type="text"/>
Panel 2 Width:	<input type="text"/>
Panel 3 Width:	<input type="text"/>

Wall Angles
<input type="text"/>
<input type="text"/>

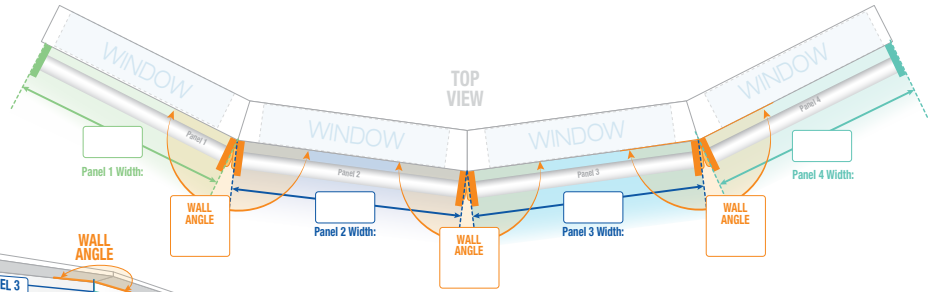
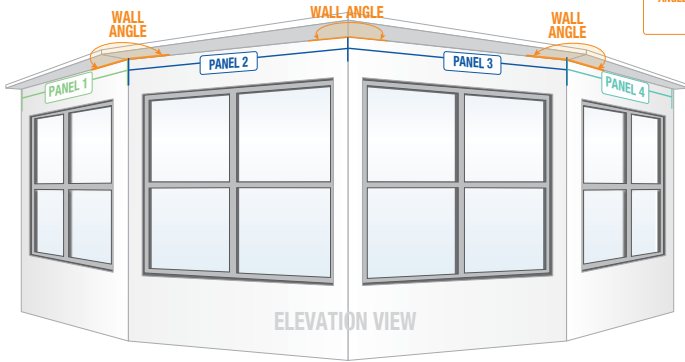
4 Shade Panels
with 2 Outside Wall Angles
and 1 Straight Coupler



Provide Panel Widths in Inches	
Panel 1 Width:	<input type="text"/>
Panel 2 Width:	<input type="text"/>
Panel 3 Width:	<input type="text"/>
Panel 4 Width:	<input type="text"/>

Wall Angles
<input type="text"/>
180°
<input type="text"/>

4 Shade Panels
with 3 Outside Wall Angles



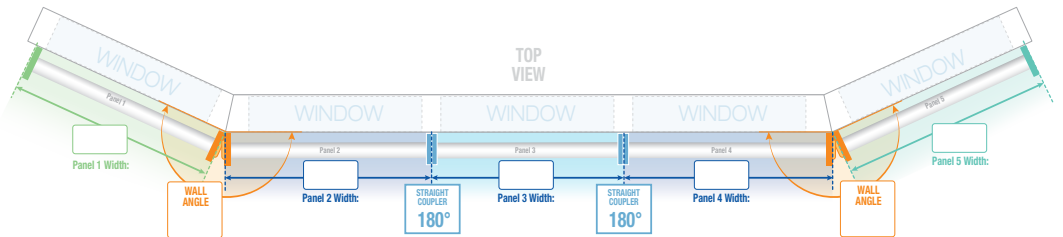
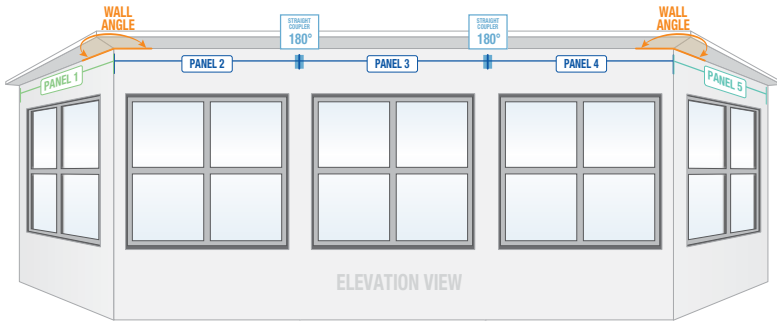
Provide Panel Widths in Inches

Panel 1 Width:	<input type="text"/>
Panel 2 Width:	<input type="text"/>
Panel 3 Width:	<input type="text"/>
Panel 4 Width:	<input type="text"/>

Wall Angles

<input type="text"/>
<input type="text"/>
<input type="text"/>

5 Shade Panels
with 4 Outside Wall Angles
and 2 Straight Couplers



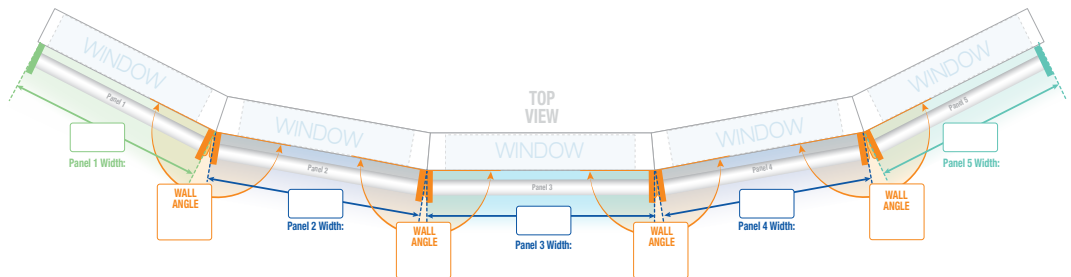
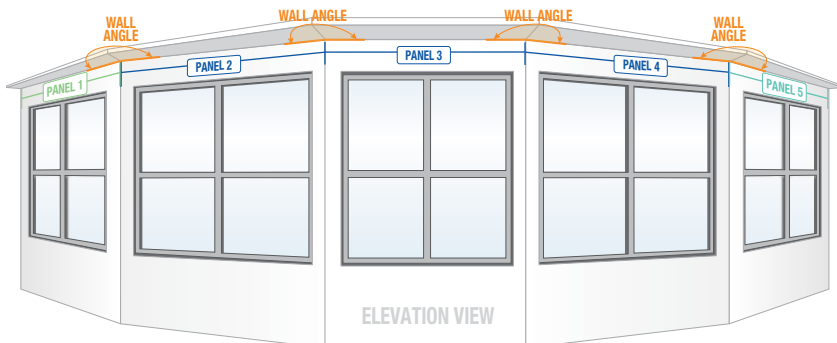
Provide Panel Widths in Inches

Panel 1 Width:	<input type="text"/>
Panel 2 Width:	<input type="text"/>
Panel 3 Width:	<input type="text"/>
Panel 4 Width:	<input type="text"/>
Panel 5 Width:	<input type="text"/>

Wall Angles

<input type="text"/>
180°
180°

5 Shade Panels
with 4 Outside Wall Angles

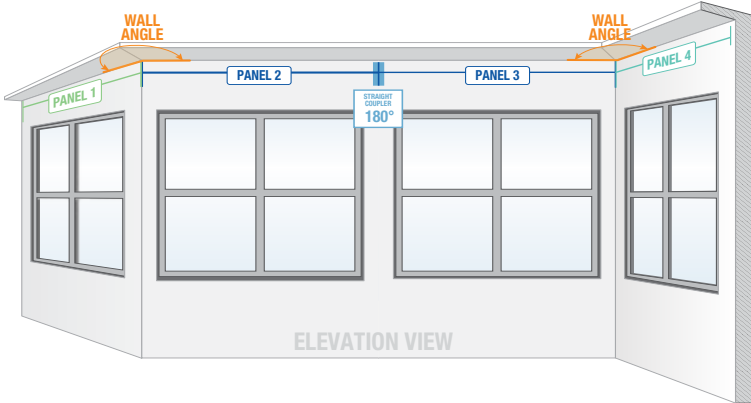


Provide Panel Widths in Inches

Panel 1 Width:	<input type="text"/>
Panel 2 Width:	<input type="text"/>
Panel 3 Width:	<input type="text"/>
Panel 4 Width:	<input type="text"/>
Panel 5 Width:	<input type="text"/>

Wall Angles

<input type="text"/>
<input type="text"/>
<input type="text"/>



- 4 Shade Panels with
- 1 Inside Angle
- 1 Straight Coupler
- 1 Outside Angle

Provide Panel Widths in Inches	
Panel 1 Width:	
Panel 2 Width:	
Panel 3 Width:	
Panel 4 Width:	

Wall Angles
180°

