

Installation/Operating Instructions Spring-Roller Window Shades by Draper

⚠ Caution

- ① Open carton along length, not at end. DO NOT use a knife to open.
- ② Each shade is tagged with the size. If fascia is included, each piece is marked.
- ③ Install all Draper window shades level. Check with carpenter's level.
- ④ Left and right brackets are different; be sure you are installing the proper brackets in the proper opening.
- ⑤ **Please read the following installation guidelines thoroughly and follow them carefully. Failure to do so may cause product to fail or otherwise fail, and invalidates warranty.**

With brackets—

⚠ **Caution: Before mounting shades, verify measurements on the card provided with the shade, and ensure the brackets are installed at the correct width.**

- ⑩ Mount brackets according to type of installation. Use appropriate fasteners (two per bracket) for wall, jamb or ceiling (see Fig. 1). **The installer is responsible for selecting mounting hardware appropriate for site conditions.**

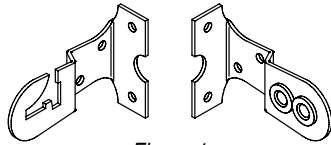


Figure 1

NOTE: Left and right brackets are different; make sure you're installing the proper bracket.

- ⑪ Insert idler end into right bracket (see Fig. 2).

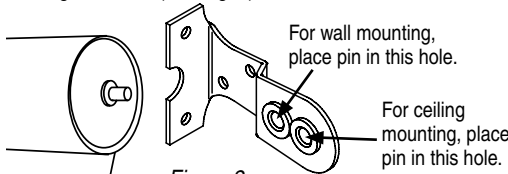


Figure 2

- ⑫ Lower spear on left end of roller into left bracket and rotate into locked position (see Fig. 3). Note: The notch on the spring roller should be positioned down. The spring has been pre-tensioned in the factory.

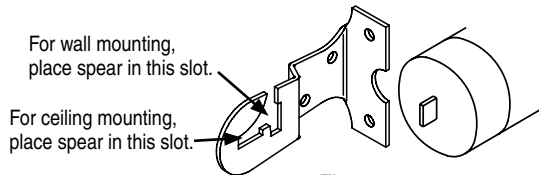


Figure 3

Please Note: If shade fabric is uneven, see "Field Adjustments".

With endcaps—

⚠ **Caution: Before mounting shades, verify measurements on the card provided with the shade, and ensure the brackets are installed at the correct width.**

- ⑬ For installations with fascia, mount endcaps according to type of installation. Use appropriate fasteners for wall, jamb, or ceiling (see Fig. 4). **The installer is responsible for selecting mounting hardware appropriate for site conditions.** Snap end covers onto endcaps.

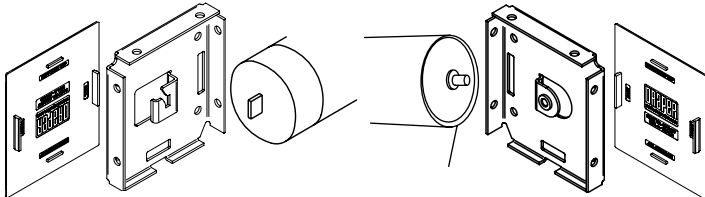


Figure 4

- ⑭ Install shade using steps 2 and 3 from above (see Fig. 4).

- ⑮ Place fascia top lip over top edge of endcaps, then rotate down and snap into place (see Fig. 5). NOTE: Make sure shade fabric does not retract completely behind fascia.

⚠ **Caution: Fascia is not fully seated until it clicks into place on both ends. Once in place, check for secure fit. If not secure, secure with appropriate fastener (not included).**

Please Note: Small hardware shown. Large hardware will look slightly different, but install and operate the same way.

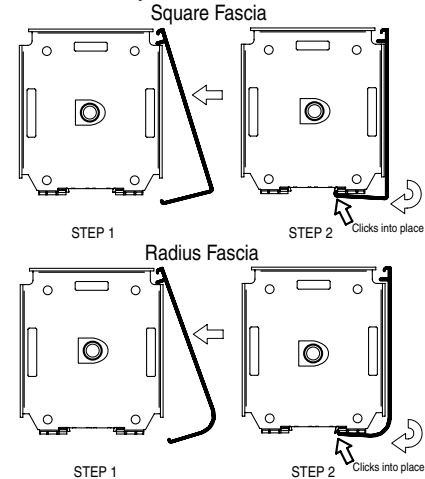


Figure 5

Headbox

⚠ **Caution: Before mounting shades, verify measurements on the card provided with the shade, and ensure the unit is installed at the correct width.**

- ⑯ Snap endcap covers onto endcaps.
- ⑰ Place endcaps into back/top portion of wall/ceiling headbox or into pocket extrusion of pocket headbox. Using pre-drilled holes in endcaps, mark the headbox for drilling.
- ⑱ Drill holes in back or top, depending on whether you will be mounting the headbox to the wall, ceiling or pocket.
- ⑲ Attach endcaps and wall/ceiling headbox back/top or pocket headbox extrusion to wall, ceiling or pocket using mounting hardware appropriate for site conditions.
- ⑳ Install shade (see "With Endcaps" section above).
- ㉑ Attach headbox fascia or pocket closure (see Fig. 6 for pocket closure). **Surface Headbox fascia is not fully seated until it clicks into place on both ends. Once in place, check for secure fit. If not secure, secure with appropriate fastener (not included).**

Surface Headbox (Small Shown)

Please Note: Small hardware shown. Large hardware will look slightly different, but install and operate the same way.

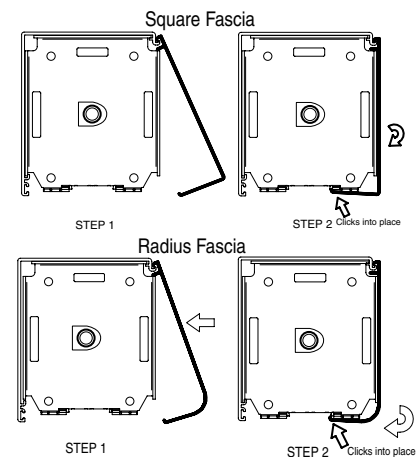


Figure 6 is continued on page 2, where you will find diagrams of the large and small pocket headbox.

Figure 6

DRAPER

411 S. Pearl St., Spiceland, IN 47385 USA ■ 765-987-7999
www.draperinc.com ■ fax 765-987-7142

Copyright © 2015 Draper Inc. Form SpringRollerWindowShades_Inst15 Printed in U.S.A.

If you encounter any difficulties installing or servicing your Spring-Roller FlexShades, call your dealer or Draper, Inc. in Spiceland, Indiana, 765-987-7999, or fax 765-987-7142.

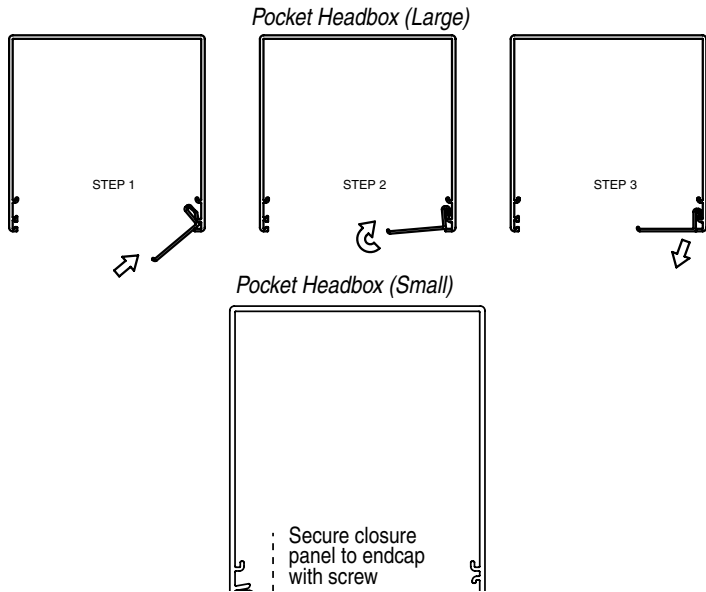


Figure 6 (continued from page 1)

Field Adjustments

Each Draper Solar Control Shade is tested to ensure proper operation. Even with this testing, some field adjustments may be needed for telescoping. If the shade is telescoping, place a piece of high quality gaffer tape about 1" wide on the exposed roller (where the fabric will cover it) on the side that you want the fabric drawn toward. For example: if the fabric is tracking to the left, place the tape on the right side.

Cleaning and Maintenance

Window covering products manufactured by Draper, when properly installed, should require no operational maintenance or lubrication.

Most of Draper's standard fabrics may be cleaned at the window by vacuuming with a soft brush attachment. They may also be cleaned by using a sponge or soft cloth and mild solution of warm soapy water. A dishwashing liquid, such as Ivory liquid, is recommended. A clean dry cloth is recommended for the metal finish.

Exceptions are Flocké and Roc-Rol fabrics, which must be cleaned with a dry art sponge.

Troubleshooting

Roller loose in brackets:

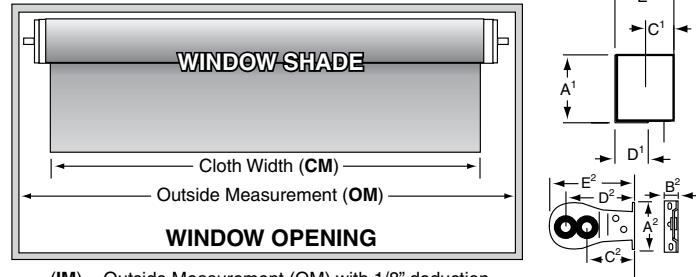
If shade roller is loose in brackets (roller should have about 1/8" end play) and doesn't readily roll up shade, unroll shade and remove from brackets. Re-roll the cloth by hand and replace it in brackets.

Roller too tight:

If shade roller is wound too tight, shade will not fully or freely unroll. Remove rolled up shade from brackets, partially unroll cloth by hand, and replace in brackets.

Spring Tensioning Instructions

- ① Clamp the flat spear on the left end of the roller securely (a pair of vise-grip locking pliers works well) and rotate clockwise 15 turns. Take care not to allow the pliers to slip as tension increases.
- ② Once the desired amount of rotations have been added, stop the rotation of the slotted end in a vertical position. The vertical position must be maintained to lock the mechanism.
- ③ Release a small amount of pressure off the roller and allow it to rotate very slowly (less than 180 degrees of rotation will be necessary). This will allow the spring mechanism to lock into position.



(IM) = Outside Measurement (OM) with 1/8" deduction.

	Headbox with Endcaps*		Brackets**		
	Small	Large	Small	Large	
A ¹	3 ¹⁵ / ₁₆ "	4 ¹¹ / ₁₆ "	A ²	7/ ₈ "	1 ¹⁵ / ₁₆ "
B ¹	N/A	N/A	B ²	5/ ₈ "	1 ³ / ₁₆ "
C ¹	1 ¹¹ / ₁₆ "	1 ⁵ / ₈ "	C ²	1 ¹ / ₄ "	1 ⁵ / ₈ "
D ¹	1 ⁹ / ₁₆ "	1 ¹¹ / ₁₆ "	D ²	1 ⁵ / ₈ "	2 ³ / ₁₆ "
E ¹	3 ⁷ / ₁₆ "	4 ¹¹ / ₁₆ "	E ²	1 ¹⁵ / ₁₆ "	2 ¹¹ / ₁₆ "

*For fascia, subtract 1/16"

**Please Note: When mounting brackets to the wall, use the hole closest to the wall. When mounting brackets to the ceiling, use the hole furthest away from the ceiling.