

Installation/Operating Instructions

FlexShade 2 with Pocket Headbox by Draper

Caution

- ① Read instructions through completely before proceeding.
- ② Follow instructions carefully. Installation contrary to instructions invalidates warranty.
- ③ Pick up shade from **ends only**. Picking headbox up at other points **will damage case and may damage fabric**.
- ④ Entire bottom of shade headbox should be unobstructed to permit access to bottom panel for making electrical connections or servicing.
- ⑤ Shade should be installed level (using a carpenter's level).
- ⑥ Operating switch(es) packed separately in shade carton. Do not discard with packing material.
- ⑦ Shade operates on 110-120V, 60 Hz. current.

NOTE: Shade has been thoroughly inspected and tested at factory and found to be operating properly prior to shipment.

Mounting Shade

Regardless of mounting method used, the following points apply:

- ① Shade should be lifted into position **only by the end mounting brackets**. **Using both mounting holes in mounting brackets makes for a much more stable installation. Never attempt to lift shade along its length.**
- ② Shade should be positively and securely supported so that vibration or even abusive pulling will not weaken installation.
- ③ Installer must insure that fasteners used are of adequate strength and suitable for the mounting surface chosen. **Installer must also insure that wall or ceiling structure are of adequate strength.** Supporting hardware (chains, cables, rods, etc.) must be essentially vertical.
- ④ Entire bottom of pocket must be readily accessible after installation is complete.
- ⑤ Front, back and top of pocket must be straight—not forced to warp or bow. Adjust spreader bars to keep large cases from warping.
- ⑥ Do not use pocket to support adjacent sections of ceiling.
- ⑦ If optional ceiling flange trim kits are attached, use hardware provided.
- ⑧ If pocket is painted, slots on bottom of case should be shielded to protect viewing surface from paint splatters or overspray.

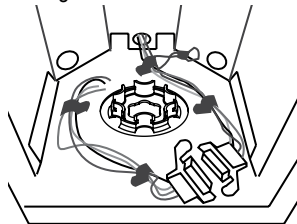
Caution: Shade is shipped with motor wiring mounted to the headbox. Be careful not to pull the wiring loose from the headbox while removing the brackets—if wiring is loose, it could be damaged during shade operation. If wiring does come loose, re-mount as it was.

- ⑨ Do not seal unit in ceiling until electrical connections have been made and shade has been operated successfully.

Electrical Connections

Shade operates on 110-120V, 60 Hz. current.

Shade is shipped with internal wiring complete and control switch(es) fully boxed. Wire connecting shade to switch(es) and switch(es) to power supply should be furnished by installer. Connections should be made in accordance with attached wiring diagram, and wiring should comply with national and local electrical codes. See Fig. 1 for internal view of wiring.



Shade roller removed for clarity

Figure 1

All operating switches should be "off" before power is connected.

Please Note: For low voltage wiring requirements, Draper recommends consulting with a professional low voltage electrical contractor. It is very important that shielded and stranded CAT 5 cable be used to prevent any electrical interference.

Operation

When shade is first operated, **be cautious!** Cycle unit down and up several times to confirm satisfactory operation.

Adjustments

Shade has been factory set and should not normally require further adjustment. However, if you desire to change the "up" and "down" stopping positions, proceed as follows:

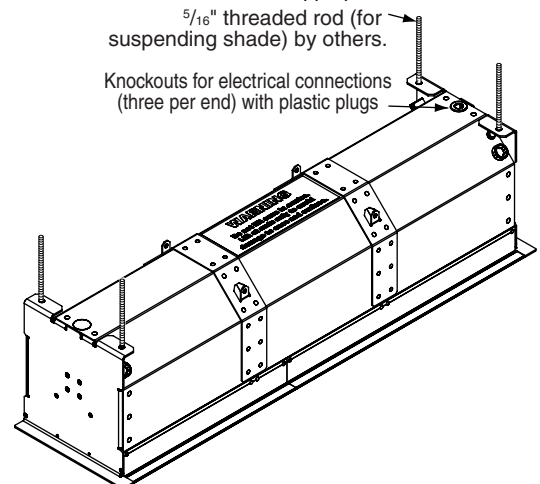
CAUTION: Be sure all switches are in "off" position before adjusting limit switches. Always be prepared to shut shade off manually when new adjustment is being tested. Shade may be severely damaged if allowed to run too far up or too far down.

ADJUSTING "FULLY UP" POSITION—Put a small screw driver in the groove of the yellow button on the motor and press vertically until hearing a "click". Raise the shade by pressing the "up" switch on unit. Press the "stop" switch when the shade is at the desired position. Then press the yellow button on motor until you hear a "click", then release.

ADJUSTING "FULLY DOWN" POSITION—Put a small screw driver in the groove of the white button on the motor and press vertically until hearing a "click". Lower the shade by pressing the "down" switch on unit. Press the "stop" switch when the shade is at the desired position. Then press the white button on motor until you hear a "click", then release.

AT NO TIME SHOULD SHADE BE UNROLLED ENOUGH TO EXPOSE ANY PART OF SHADE ROLLER.

Please Note: The above instructions affect only the limits on the motors. For adjustment procedures using Draper's IntelliFlex Control Systems, please consult the installation information for the appropriate control.



Removing/Replacing Roller

If there is not sufficient access above the ceiling to get to the mounting brackets, you can use the knockouts located in the top of the case just below the mounting bracket holes. To get to these holes, you will need to remove the hole covers. You will also need to remove the shade motor/roller assembly. These steps may require more than one person.

Removing Shade/Motor Assembly

- ① Unplug motor from unit wiring (see Fig. 1).
- ② Remove cotter pin from idler assembly.
- ③ Remove locking screw from motor retainer ring, then expand motor retainer ring around the motor-end bracket (see Fig. 2).
- ④ The idler is spring-loaded. Push motor/roller assembly toward the idler end. Remove motor from motor mount, then remove idler end.
- ⑤ Mount the case using mounting brackets. A long-handled driver will allow you to access the bracket mounting holes through the knockouts.

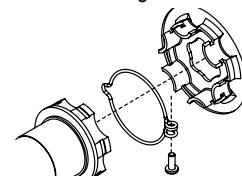


Figure 2

Please note: Maximum torque for tightening screw is 5 lb-inches.

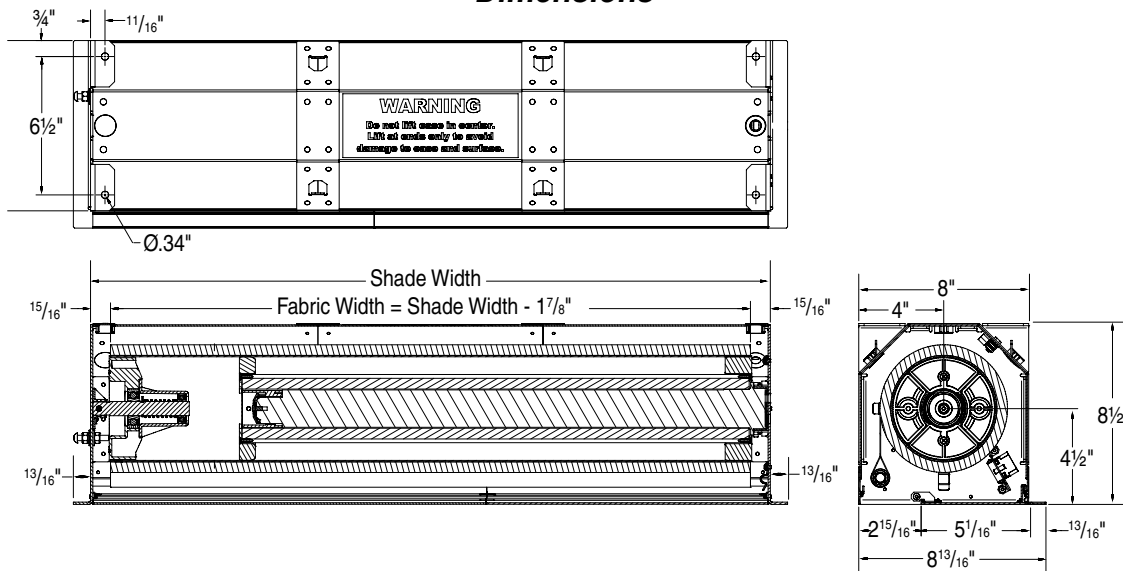
Please see back page for dimensional diagrams of case, wiring diagrams and instructions on replacing the roller/roller/fabric assembly.

If you encounter any difficulties installing or servicing your FlexShade 2 with Pocket Headbox, call your dealer or Draper, Inc., Spiceland, Indiana, (765) 987-7999 or fax (765) 987-7142.

DRAPER

411 S. Pearl St., Spiceland, IN 47385 USA ■ 765-987-7999
www.draperinc.com ■ fax 765-987-7142

Dimensions



Replacing Shade/Motor Assembly

- ① Make sure motor retainer ring is expanded around the motor end bracket (see Fig. 2, page 1).
- ② Place motor/roller assembly in the idler end. Push spring-loaded idler into idler mount (see Fig. 3), then move motor end into motor mounting bracket.

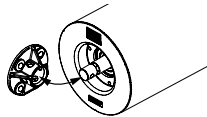


Figure 3

- ③ Ensure that the motor retainer ring is properly installed around the grooves in the motor and the motor end bracket (see Fig. 2, page 1).
- ④ Install the motor retainer ring screw and tighten (see Fig. 2, page 1).
- Please note: Maximum torque for tightening screw is 5 lb-inches.**
- ⑤ Use the provided spanner wrench to rotate the idler until the holes in the idler match up with the vertical holes in the idler mounting bracket as seen when looking straight up into the case (see Fig. 4).

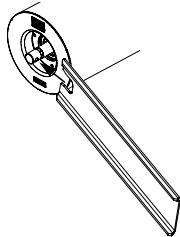


Figure 4

- ⑥ Using a pair of needle-nosed pliers install the cotter pin (see Fig. 5). The pin has a built-in ball detent which will keep the pin from falling back out.

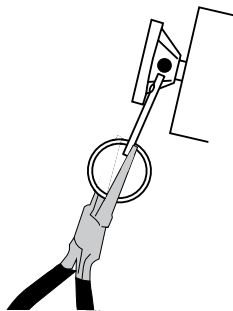
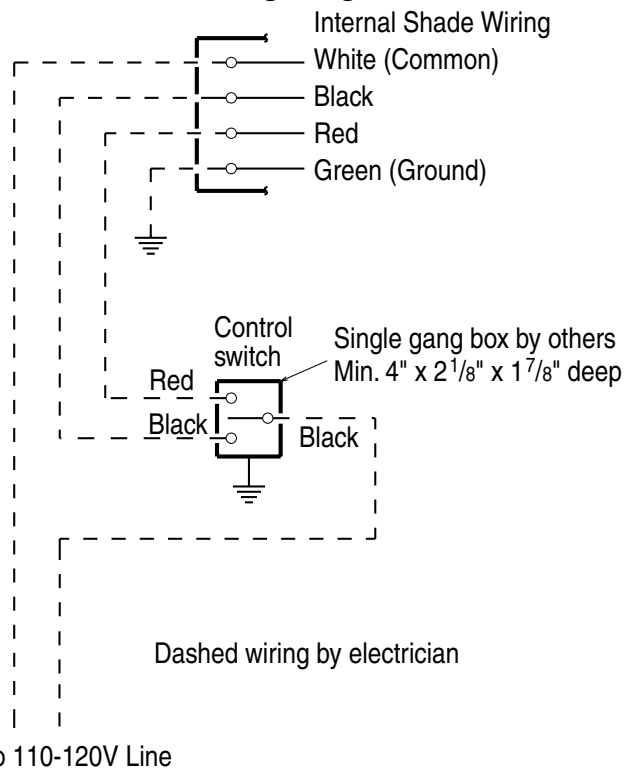


Figure 5

Wiring Diagrams



NOTE: Test shade operation. If shade direction does not correspond with the switch orientation, turn power back off and switch the red and black wires from the motor to the switch.

Cleaning and Maintenance

Idlers on motorized shades may occasionally need lubrication. If lubrication is required, apply a small amount of a lithium based grease direct to the idler pin.

Most of Draper's standard fabrics may be cleaned at the window by vacuuming with a soft brush attachment. They may also be cleaned by using a sponge or soft cloth and mild solution of warm soapy water. A dishwashing liquid, such as Ivory liquid, is recommended. A clean dry cloth is recommended for the metal finish. **Exceptions are Flocké, Roc-Rol and Phifer SW7000 fabrics, which must be cleaned with a dry art sponge.**