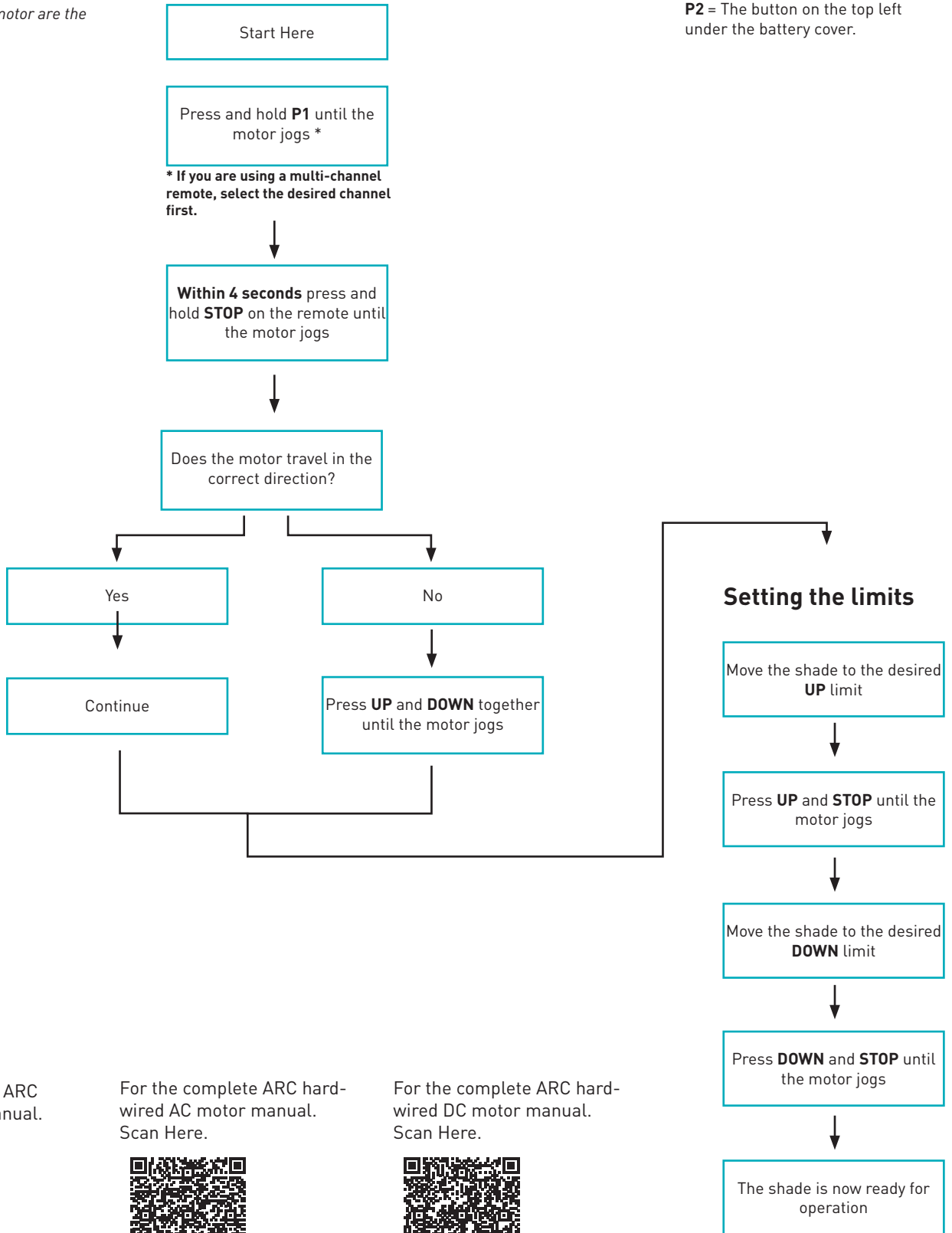


# ARC Motor Programming

Please read these instructions prior to starting

**P1** = The button on the motor head.  
**P2** = The button on the top left under the battery cover.

The instructions for the hard-wired and battery ARC motor are the same.



For the complete ARC battery motor manual. Scan Here.



For the complete ARC hard-wired AC motor manual. Scan Here.



For the complete ARC hard-wired DC motor manual. Scan Here.

