

SCAN QR FOR
ACCESS to ALL



Intelliflex I/O
Component
Instructions

Intelliflex I/O MLT - Motor Limit Tool - C202.060

Section 1 - Overview

CABLE INPUT

Can be connected to a single motor or to a network to program all motors at once



PLEASE NOTE: This instruction sheet covers using the MLT via direct connection to the motor.

For detailed instructions for Network Connection and all other MLT programming procedures, scan the BLUE QR code on the BACK PAGE.

**SETTING
MOTOR LIMITS**

ONLY AVAILABLE FOR

**Intelliflex I/O
Upper Limit
& Lower Limit**

Hold for 2 seconds to set the corresponding limit to current shade position.

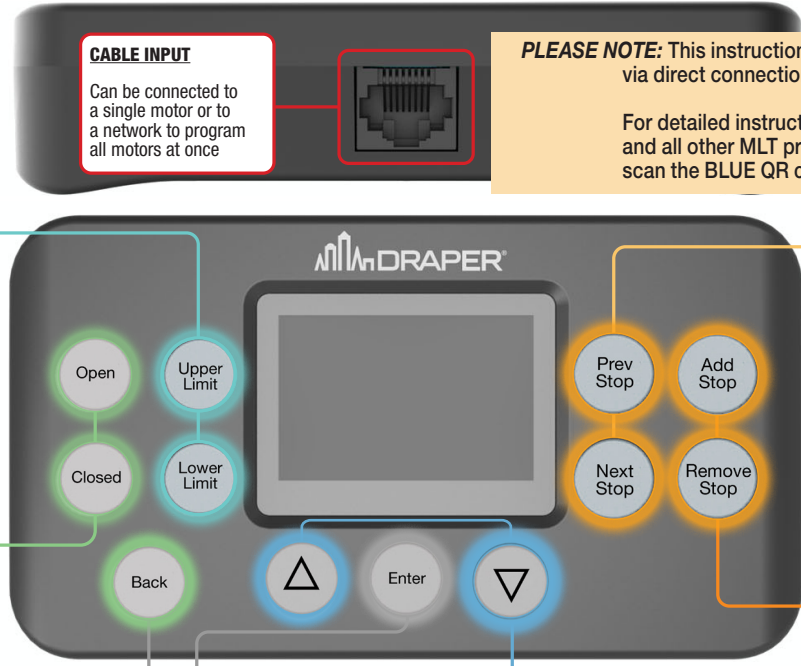
Hold for 5 seconds to clear the corresponding limit.

MOTOR OPERATION

Open & Close

Tap to jog the motor open or closed a small distance.

Hold to move the motor until released.



PRESET STOPS
Prev & Next Stop
Tap to move to the previous/next preset stop.

Hold for 2 seconds to move to the shade limit in that direction.

ADD/REMOVE STOPS
Add Stop
Hold for 2 seconds to set a preset stop at the current location.

Remove Stop
Hold for 2 sec to remove the nearest preset stop.

Hold for 7 seconds to clear all preset stops.

Back
Used to navigate back in a menu or to stop editing a value and cancel the change.

Enter
Used to navigate to the selected menu item, or to begin editing a value and accept the value after editing.

Up & Down
Used to select the previous/next menu item or to edit a value.



Section 2 - **BASIC MLT FUNCTIONS**

Rename: Customize shade name. Name consists of Base (select from list), Number (up to 5 digits), Extension (up to 2 digits).

Normal/Reverse Dir: Shade travel direction.

Presets: Shows current number of Preset Stop. Allows configuration of the # of equally spaced stops.

Set Group: Select Group # (1-64) shade should be assigned to.

Copy/Paste: Copy or Paste settings from motor to motor.

Default position: Shade position (open, close or none) when no overrides are present.

SCAN QR FOR
ACCESS to ALLIntelliflex I/O
Component
InstructionsSection 3 - **Links to IntelliFlex I/O Documentation**

Scan to download
Detailed Motor Limit
Tool Instructions



Scan to download
IntelliFlex I/O Network
Planning Sheet

