

Section 1 - Programming Buttons

Programming requires 4 buttons: **PROGRAM**, **START**, **ADD** and **SKIP**. There are 2 LEDs to indicate status.

Section 2 - Assign Shades to a Switch Zone

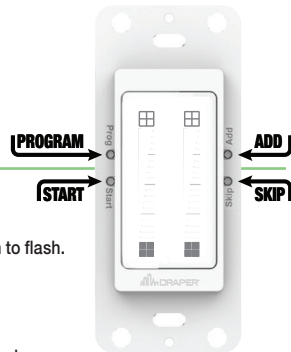
By default, all switch zones will control every shade in the network. To limit the operation to a select group of shades use the following procedure.

1. Enter programming mode by **HOLDING PROGRAM BUTTON FOR 5 SECONDS**. The green LED will begin to flash above the Zone 1 control area.
2. **TAP THE CONTROL AREA FOR ZONE 2** to program that zone. The green LED will flash above the Zone that is being programmed.
3. **HOLD START BUTTON FOR 2 SECONDS** to begin. One shade will begin to identify.
4. **TAP ADD BUTTON** to assign that shade to switch zone, or **SKIP BUTTON** to move on to the next shade.
5. Once all shades for the group have been added, **TAP START BUTTON**. All shades in group will identify. **TAP START BUTTON** again to finish programming group.
6. **HOLD PROGRAM BUTTON FOR 5 SECONDS** to exit programming mode and return to normal switch operation. The green LED will stop flashing.

Section 3 - Setting Shade Limits

Please Note: It is recommended that shade limits be set using the Motor Limit Tool (PN: C202.047), however they can also be set by the wall switch using the following procedure.

1. Enter programming mode by **HOLDING PROGRAM BUTTON FOR 5 SECONDS**. The green LED will begin to flash.
2. **PRESS THE FULLY OPEN ICON** for a shade zone and **HOLD FOR 7 SECONDS**.
The green LED will stop flashing, but the blue LED will remain on. One shade will begin to identify.
3. **TAP SKIP BUTTON** to move on to a different shade, if necessary, until the shade to be set is identifying.
4. Position shade at desired limit position by **TAPPING THE FULLY OPEN** or **FULLY CLOSED** icons to jog shade, or swipe control area to move shade until control area is tapped.
5. To remove any limits that were previously set for the shade, **HOLD THE ADD BUTTON FOR TWO SECONDS**.
6. **HOLD FULLY OPEN ICON FOR 5 SECONDS** to set upper limit to current position, or **FULLY CLOSED ICON FOR 5 SECONDS** to set lower limit.
The shade will jog to indicate that limit has been set.
7. **TAP SKIP BUTTON** to move on to the next shade, or **HOLD PROGRAM BUTTON FOR 5 SECONDS** to exit programming.



Section 4 - Selecting Switch Profiles

To change to one of these profiles:

1. Enter programming mode by **HOLDING PROGRAM BUTTON FOR 5 SECONDS**. The green LED will begin to flash.
2. **HOLD THE ADD BUTTON** the blue LED will blink to indicate the switch profile number (1 Blink = Profile #1, 2 Blinks = Profile #2).
3. While **HOLDING ADD** to change to one of these profiles: Tap anywhere on the control area.

Section 4.1 - Standard Profile

Tap to go to **CLOSEST PRESET**. Tap again while moving to stop.

	Action	Command Response
Profile #1 Standard	Tap Open	Move Fully Open
	Tap Closed	Move Fully Closed
	Tap Middle Area	Move to Closest Preset or Stop if Moving
	Swipe Up	Move to Prev Stop
	Swipe Down	Move to Next Stop

Section 4.2 - No Presets Profile

Tap to go to that **PERCENTAGE**. Tap again while moving to stop.

	Action	Command Response
Profile #2 No Presets	Tap Open	Move Fully Open
	Tap Closed	Move Fully Closed
	Tap Middle Area	Move to Percentage Tapped or Stop if Moving
	Swipe Up	Move Fully Open
	Swipe Down	Move Fully Closed

Section 4.3 - No Stopping Profile

Tap to go to **CLOSEST PRESET**.

	Action	Command Response
Profile #3 No Stopping	Tap Open	Move Fully Open
	Tap Closed	Move Fully Closed
	Tap Middle Area	Move to Closest Preset
	Swipe Up	Move to Prev Stop
	Swipe Down	Move to Next Stop





Section 5 - **Factory Reset**

While the switch is in normal operation mode, **HOLD BOTH THE START AND SKIP BUTTONS FOR 8 SECONDS.**

The blue LED will flash while the buttons are held. When the blue LED stops flashing the factory reset is complete. All zones on the switches will return to master operation.

Section 6 - Switch Operation

To operate the switch while set to Standard Profile:

Action	Command Response
Tap 	Move Fully Open
Tap Control Area	Move to Closest Preset or Stop if Moving
	Move to Previous Stop
	Move to Next Stop
Tap 	Move Fully Closed

