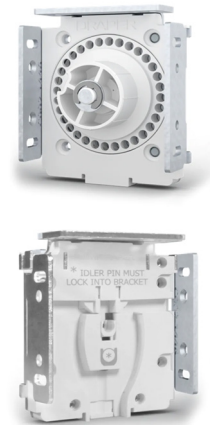


MANUAL Clutch-Operated FlexShade® NEXD

READY FOR INSTALLATION



Residential Installation. Installer: Lakeview Shade & Screen, Richmond, IN.
Product: FlexShade NEXD. Fabric: Mermet Deco 3% in Tumbleweed and Flagstone colors.

- Easy to use and operate, the Clutch-Operated FlexShade® NEXD window shade offers a stylish way to change the look of indoor spaces without the use of automation. NEXD provides light control with a bead chain clutch. A height-adjustable idler bracket is included for fine leveling adjustment after installation. Various surface or recessed mounting options are available for your indoor application. Choose from solar, decorative, or privacy fabrics. With its hassle-free, maintenance-free clutch, and fine leveling adjustments, the Clutch-Operated FlexShade NEXD offers a long-lasting solution for residential, commercial, healthcare, institutional, and educational settings.

FEATURES

- Comes with mounting endcaps (standard). Optional fascia with endcaps, surface mounted headbox, or pocket mounted headbox available. Type D Pocket available as an accessory.
- Clutch available in white (standard) or black. Clutch has a single groove for easy alignment of the roller with the idler endcap.
- Steel mounting endcap with integrated NEXD Clutch.
- Height-adjustable idler endcap for fine leveling adjustments after installation.
- Pre-drilled jamb mounting holes.
- Clutch-operated products can be ANSI/WCMA A100.1 compliant for areas where small children are present.
- Product designed for interior use.

OPTIONS

- Optional dual rollers available upon request.
- Hardware finish choices: clear anodized (standard), black, white, ivory, or charcoal bronze. Custom powder coat colors available.
- Stainless steel bead chain (standard). Polyester chain available in white, black, brown, grey, or ivory at no extra charge. Bead chain clutch operator mounted right- (standard) or left-hand operation.
- Adhesive attachment available upon request in place of spline attachment (standard).

SIZES

- Maximum width for product exceeds 144" (366 cm), depending on fabric selection.
- Available in 3 hardware sizes: slim, small, and large. Where slim and small are available in the same size, small will be the default choice. The slim version offers a fully assembled cassette-style system with a 3 3/8" (86 mm) profile.

FABRIC OPTIONS

draperinc.com/windowshades/fabricoptions.aspx

WARRANTY

draperinc.com/warranty.aspx

SUPPORTING DOCUMENTS

All instructions, technical drawings and other supporting documents are located at: draperinc.com/documents.aspx

For more information on this product visit:
draperinc.com/windowshades/manualshades.aspx