



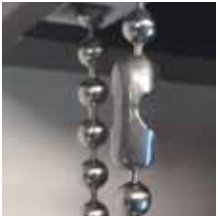
Ball Stops

Upper and lower stopping limits for bead chain clutch shades.



Bead Chain

Operating chain for clutch shades. Stainless steel standard. Optional plastic in five standard colors.



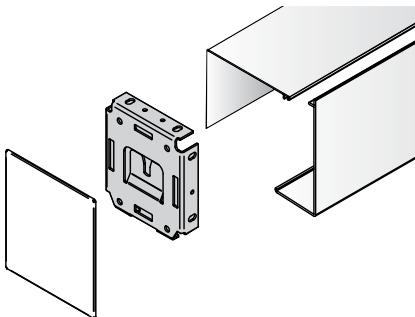
Bead Chain Connector

Metal piece to connect ball chain.



Bracket

Standard mounting point for shade. Use the term "bracket" when providing shade without fascia or headbox.



Ceiling Wall Headbox

Also called a "surface headbox." Consists of decorative front fascia panel and top back cover. Shade is accessible by removing front fascia.



P-clip (standard)



Spring-loaded tensioner

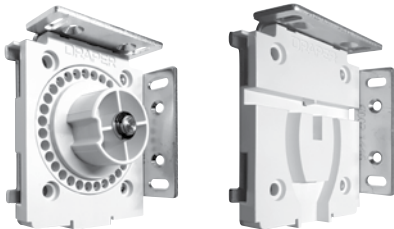
Chain Hold Down

Safety device to keep chain taut. P clip standard. If clutch-operated roller shades are installed in an environment where it's possible that young children will be present, choose upgraded spring loaded tensioner to comply with ANSI/WCMA A100.1, the Standard for Safety of Window Coverings.



Clutch

Bead chain operator for manual roller shades. Sized as needed for shade panel lifting requirement.



Clutch

Idler

Clutch NEXD

Heavy-duty clutch mechanism is integrated into mounting endcap. Endcap is available in three sizes (slim, small, and large) depending on size of shade and desired hardware options



Coupled

Two or more bands of shades operating on a single motor or crank. Also sometimes referred to as "multi-banded" shades.



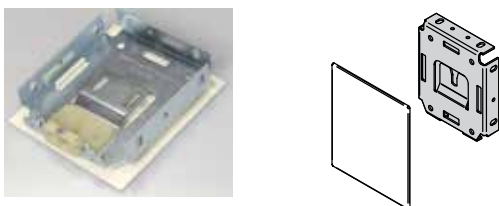
Coupler

Allows one motor or crank to operate multiple shade fabric bands.



Endcap Cover

Decorative cover for endcap. Included in width of shade measurements as standard. If endcap covers are not to be used, notify Draper so width of covers may be taken into account.



Endcap with Fascia or Headbox

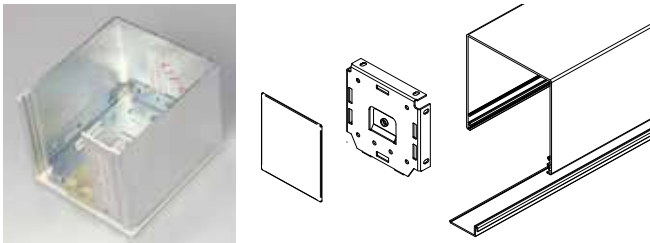
Endcaps provide mounting point for shade, and attachment point for fascia/headbox. No brackets are needed when end caps are used.

GLOSSARY FlexShade® Terms / Definitions



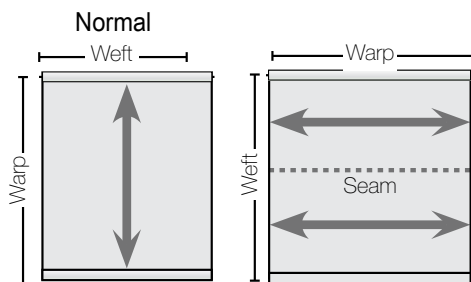
Fascia

Decorative aluminum shade cover.



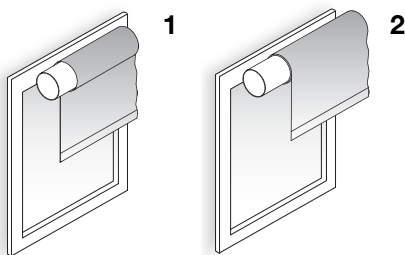
Pocket Style Headbox

Four sided cover intended for recessed installation. Shade is accessible from the bottom.



Railroad/Transverse

Width of window is greater than width of fabric. Pieces of fabric are rotated, seamed horizontally and trimmed to the correct width. In some cases several pieces may be seamed together to cover unusually tall windows. Not all fabrics are suitable for seaming.



Regular Roll

Fabric is rolled off back of roller, next to window.

Reverse Roll

Fabric is rolled off front of roller, away from window.



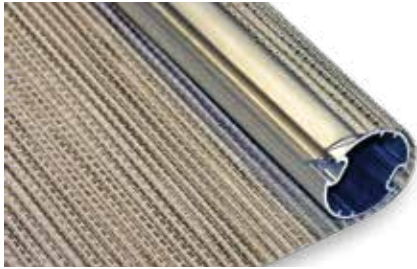
Seams

Two pieces of fabric joined together to make larger piece. All Draper seams are heat sealed. Custom locations available to match mullions.



Slat Bar

Bottom shade weight which is enclosed in a heat sealed hem.



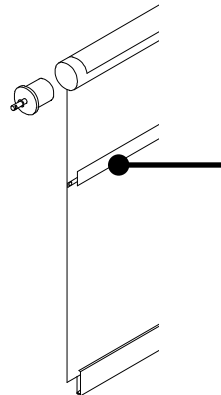
Spline Attachment

A method of attaching shade fabric to a roller that allows shade fabric to be removed without removing roller assembly from mounting hardware. Fabric is welded to a plastic spline then inserted securely into a matching channel in the roller. May affect which shade sizes use small/large fascia or headbox.



Spring Assist

Also known in specifications as Lift Assist Mechanism (LAM). Specialized roller which reduces resistance when raising a manual shade.



Stay

Metal strip to minimize fabric curling or for fabric retention in side channels.



U Channel

2 1/2" x 1" side channel for fabric. Used to reduce light gaps.