

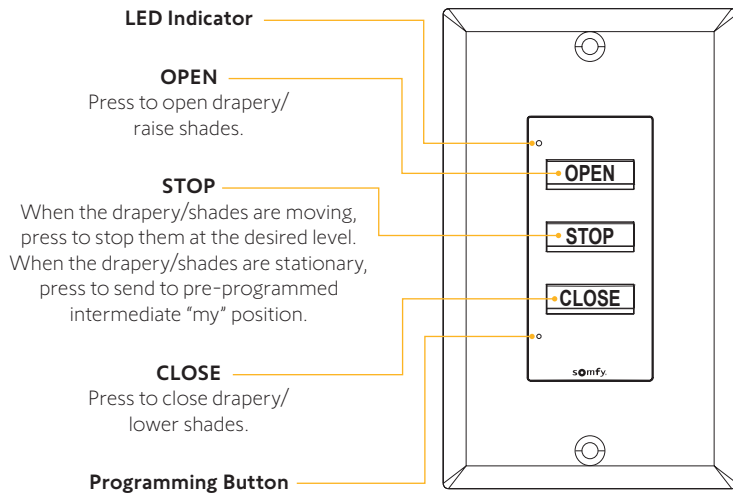
DecoFlex WireFree™ 3-Button Instructions

Item #:1870908 (White)

Product Overview

The DecoFlex WireFree™ 3-Button keypad provides a simple and elegant way to control Somfy-powered RTS interior shades. This keypad is compatible with all Somfy RTS motors and brings an intuitive single channel control experience to the DecoFlex WireFree product line.

Control Operation



What's In the Box

- DecoFlex WireFree™ 3-Button keypad
- Instructions
- CR2450 battery
- Mounting bracket
- Decora Switch Plate
- Mounting screws (x2)

Important Notes

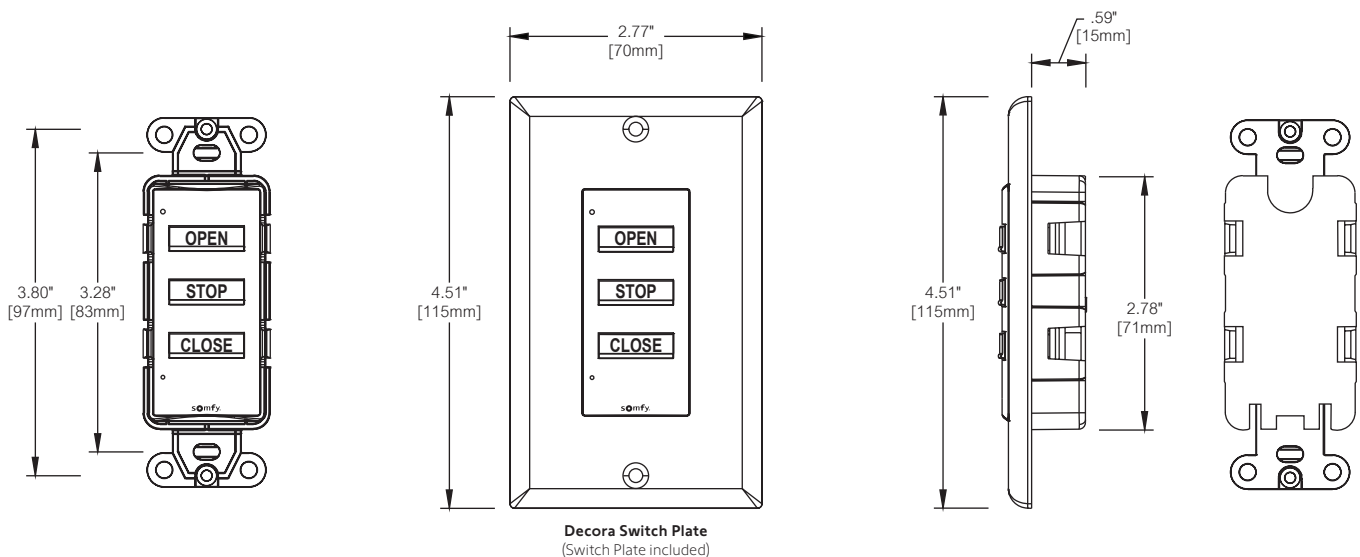
Codes: Install in accordance with all local and National Electrical Codes.

Environment: Ambient operating temperature is 41° F to 104° F (5° C to 40° C).

Mounting: Mounting bracket (included) allows for direct mounting to drywall. No junction box required.

Battery: DO NOT use rechargeable batteries. Using improper batteries could damage the DecoFlex keypad.

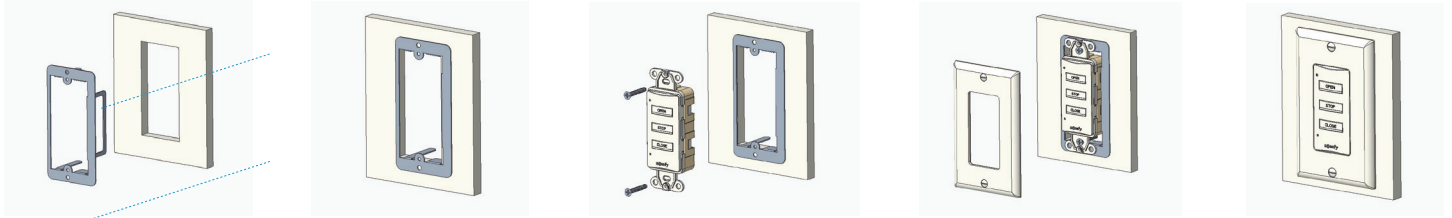
Dimensions



Installation

The keypad can be wall-mounted with the following steps:

1. Cut an opening into drywall using the mounting bracket as a guide.
2. Install the bracket securely in place.
3. Secure the keypad to the bracket using the screws provided (do not over-tighten).
4. Attach the Decora Switch Plate on to the keypad

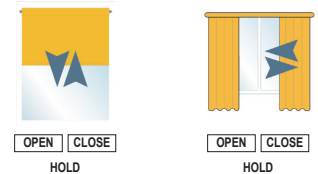


Initial Programming

For detailed steps on programming, please refer to the pocket programming guide at www.somfypro.com/pocket-programming-guide

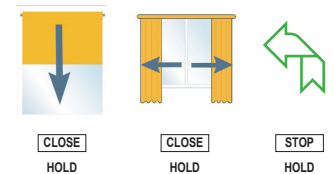
STEP 1: INITIATE PROGRAMMING

On the keypad, PRESS & HOLD both the **OPEN** and **CLOSE** buttons simultaneously until the window covering jogs. This may take up to 10 seconds.



STEP 2: CHECK THE DIRECTION OF OPERATION

On the keypad, PRESS & HOLD the **CLOSE** button and check if the window covering is closing. If the window covering does not correspond with the expected direction, PRESS & HOLD the **STOP** button until the window covering jogs to reverse the direction. Confirm before proceeding.



STEP 3: SETTING MOTOR LIMITS (The end limits can be set in any order)

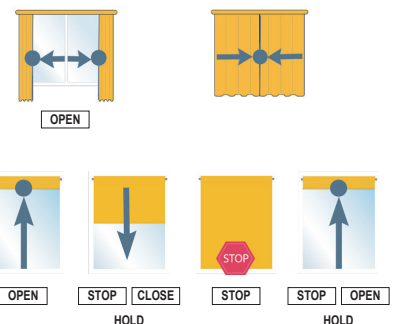
 For drapery, BRIEFLY PRESS the **OPEN** or **CLOSE** buttons. The drapery will automatically run to record both hard stop positions.

Bring the window covering to the desired upper limit position, then PRESS & HOLD both the **STOP** and **CLOSE** buttons simultaneously until the window covering starts to move.

PRESS the **STOP** button to stop the motor when the desired lower limit position is reached. PRESS the **OPEN** or **CLOSE** button to adjust to the exact position.

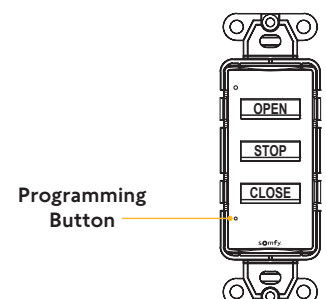
PRESS & HOLD both the **STOP** and **OPEN** buttons simultaneously until the window covering starts to move. The window covering will stop at the previously set upper position.

PRESS & HOLD the **STOP** button until the window covering jogs to confirm the limit settings.



STEP 4: COMPLETE PROGRAMMING

BRIEFLY PRESS the **PROGRAMMING** button on the front of the keypad. The window covering will jog indicating programming is complete and the keypad is now ready to be used.



Modifying Keypad Programming

For detailed steps on programming, please refer to the pocket programming guide at www.somfypro.com/pocket-programming-guide

SETTING INTERMEDIATE PREFERRED "MY" POSITION

Stop the window covering at the desired intermediate position, then PRESS & HOLD the **STOP** button until the window covering jogs.

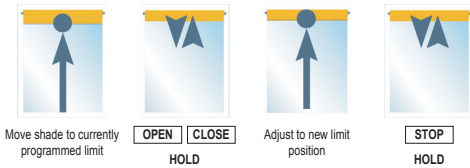
The intermediate position is now confirmed. PRESS the **STOP** button to move the window covering to this position.



MODIFYING UPPER/LOWER LIMITS

Move the window covering to its current upper or lower limit, then PRESS & HOLD both the **OPEN** and **CLOSE** buttons simultaneously until the window covering jogs. This could take up to **10** seconds.

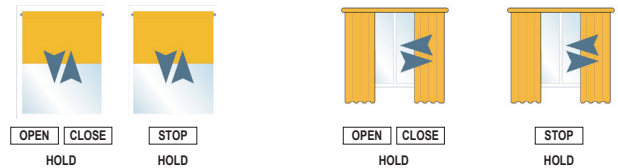
Adjust the shade to the new desired limit position with the **OPEN** and **CLOSE** buttons, then PRESS & HOLD the **STOP** button until the window covering jogs to confirm the new limit.



MODIFYING THE OPERATION DIRECTION

Move the window covering away from its current upper or lower limit, then PRESS & HOLD both the **OPEN** and **CLOSE** buttons simultaneously until the window covering jogs. This could take up to **10** seconds.

Hold the **STOP** button until the window covering jogs to confirm the change of the operation direction.



ADJUSTING THE SPEED (Supported motors only)

Move the window covering away from its upper or lower limit, then PRESS & HOLD both the **OPEN**, **STOP**, and **CLOSE** buttons simultaneously until the window covering jogs and the window covering starts moving. This could take up to **10** seconds.

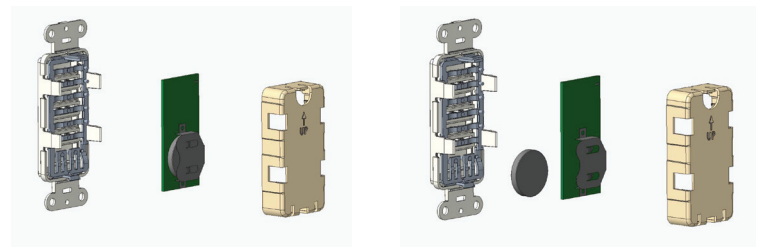
To increase the speed, PRESS & HOLD the **OPEN** button until the shade jogs. Repeat as needed. To decrease the speed, PRESS & HOLD the **CLOSE** button until the window covering jogs. Repeat as needed.

PRESS & HOLD the **STOP** button until the window covering jogs to confirm the new speed.

Battery Replacement

WARNING: Burn hazard. To avoid the risk of fire, explosion, or burns, DO NOT recharge, disassemble, crush, puncture, or incinerate the battery. Please recycle battery appropriately.

1. Remove the keypad from the wall and disassemble.
2. Slide a new CR2450 battery into the holder and reassemble the keypad.



FCC/IC Information

This device complies with part 15 of the FCC Rules and Industry Canada license-exempt RSS standard(s). Operation is subject to the following two conditions:

- (1) This device may not cause interference, and
- (2) this device must accept any interference, including interference that may cause undesired operation.

New Jersey
121 Herrod Blvd.
Dayton, NJ 08810
T: (800) 22-SOMFY
F: (609) 395-1300

Somfy Systems, Inc.
T: (800) 22-SOMFY
www.somfypro.com
Florida
1200 SW 35th Ave.
Boynton Beach, FL 33426
T: (877) 22-SOMFY
F: (561) 995-7502

California
15301 Barranca Parkway
Irvine, CA 92618-2201
T: (877) 72-SOMFY
F: (949) 727-3510

Somfy ULC
T: (800) 66-SOMFY
www.somfypro.ca
6411 Edwards Blvd
Mississauga, ON L5T 2P7
CN: (800) 66-SOMFY
F: (905) 564-6446

