

# Video Conferencing Camera Lift

Please check all appropriate selections and attach room schedule with verified dimensions.

Please provide information for each numbered item:

**1. Select Voltage:**

- 110-120v
- 220-230v

**2. Select Controls:**

**Please Note:**

This Draper motorized lift comes with Low Voltage Control built in and one LVC-S (3-Button wall switch).

**Additional Control Options:**

- Total number of wall switches (switches operate independently) \_\_\_\_\_
- 24 Volt 3-Button Switch      How many switches? \_\_\_\_\_
- Radio Frequency Remote Control (only with 24V)
- Infrared Remote Control (only with 24V)
- Optional Key Operated Switch
  - Power Supply Key Switch (On-off)
  - 3-Position Key Control (SP-KSM)

**3. Installation Information:**

Do you want the screen and lift case lengths to match?  Yes     No  
If yes, specify the case length of screen: \_\_\_\_\_

**4. Camera Information (Camera supplied by others):**

Manufacturer: \_\_\_\_\_  
Make/Model: \_\_\_\_\_  
Camera Dimensions and Weight: \_\_\_\_\_

**5. Screen Information:**

Draper Screen Model Used: \_\_\_\_\_  
Screen Image Size: \_\_\_\_\_  
Total Screen Drop (120" maximum—including any extra top drop): \_\_\_\_\_

**6. Factory Installed Cables:**  No     Yes

If Yes, select type of cables to be installed at factory (limit of two cables total)  
 HMDI: 1 or 2       CAT6: 1 or 2

**Please Note:** The Video Conferencing Camera Lift should be specified in conjunction with a Draper motorized screen.

## Specifications

Video Conferencing Camera lifts, for cameras weighing up to 15 lbs and up to 14" w. x 9" d. x 8" h. Recessed ceiling mounting. Electrically operated by two (2) 110-120V AC, 60 Hz 3-wire motors, instantly reversible, lifetime lubricated, with internal thermal overload protector and electric brake. Draws 1.2 amps. Preset, accessible limit switches to adjust down stopping position. Camera to be mounted on shelf and lowered by a textile panel with stabilizing scissor arm. Case of steel. Endcaps are stamped steel. Case to include bottom flange for trim around edges of ceiling opening. Four (4) Mounting brackets on top of case. White baked powder coat finish.

## Dimensions & Data

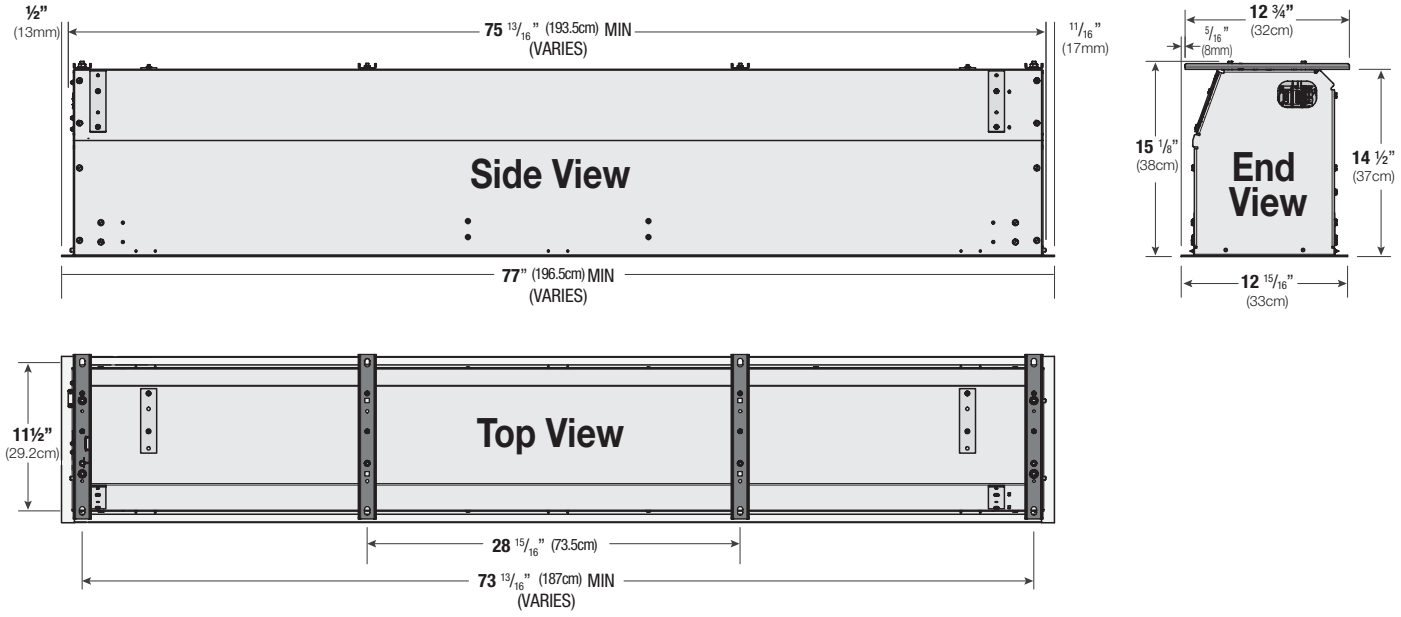
Height in closed position	15 1/2"
Max. Camera size	14"w. x 9"d. x 8"h.
Approx. travel speed	51 sec. Max. time 120"
Total Capacity	15 lbs.
Amperes	1.2



PROJECT: \_\_\_\_\_  
ARCHITECT: \_\_\_\_\_  
CONTRACTOR: \_\_\_\_\_  
SUPPLIER: \_\_\_\_\_  
DATE: \_\_\_\_\_ REVISED: \_\_\_\_\_

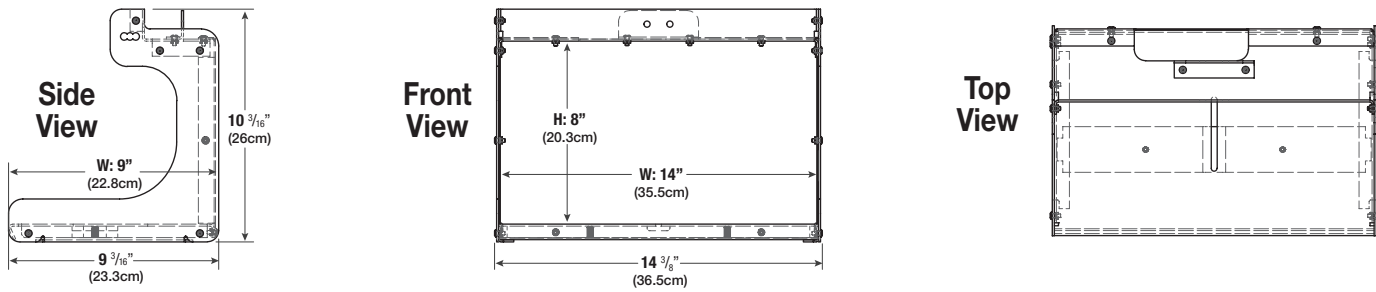
## Case Dimensions

Case to be recessed in ceiling, hung from threaded rod attached to four (4) mounting brackets.

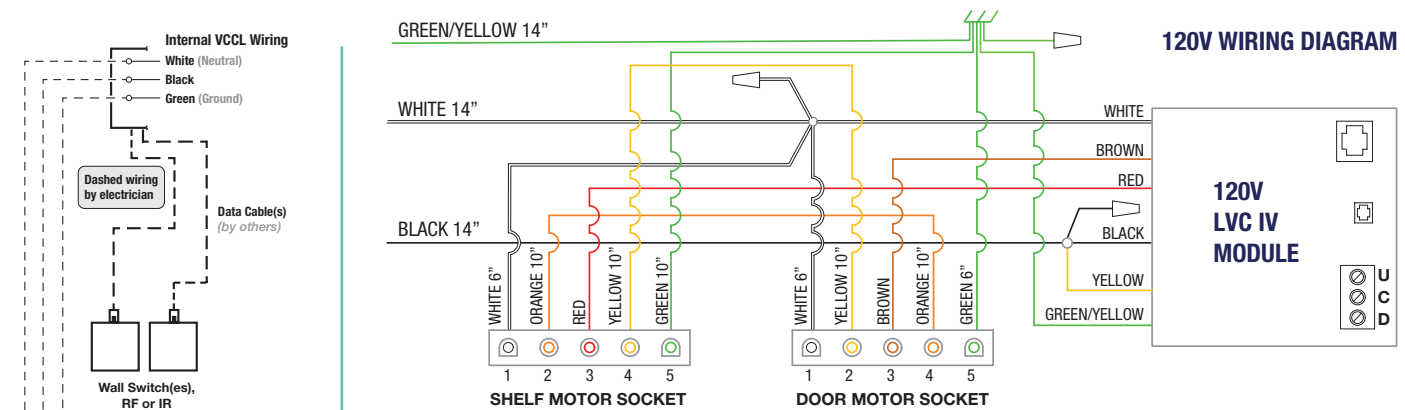


## Camera Shelf Dimensions

Shelf accommodates cameras weighing up to 25 lbs and up to 14" w. x 9" d. x 8" h.



## Wiring Diagrams



**Please Note:**  
 Wire nuts shown in the diagram above are to be used with supplied Test Power Cord.