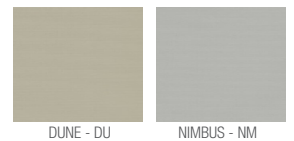
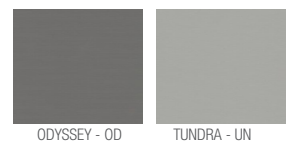
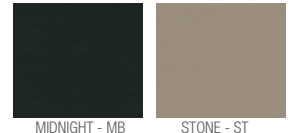
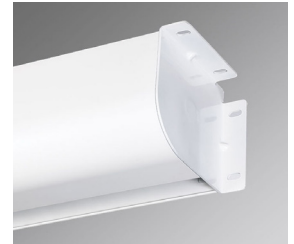


VIDEO CONFERENCING VCB TARGA XL

UNIQUE SOLUTIONS HELP PROJECT YOUR IMAGE AND AVOID VIEWER DISTRACTIONS

ELECTRIC



Digital sample of actual colors may vary slightly.

■ The **VCB Targa XL** accommodates larger sizes and is a cost-effective, convenient way to provide the ultimate customized message when videoconferencing. Housed in an attractive white, scratch-resistant steel case with matching endcaps that form universal mounting brackets, the electric VCB Targa XL video conferencing background features easy installation. The motor is mounted inside the roller, providing a clean, low-profile appearance. This free-hanging background maintains flatness thanks to the weight of the screen and bottom dowel.

FEATURES

- Floating mounting brackets for mounting screen to wall or ceiling.
- Pentagonal steel case includes scratch-resistant finish with matching endcaps.
- Wall switch standard.
- Motor mounted inside roller, for a trim, balanced appearance.



OPTIONS

- Background options available: neutral colors, chroma key, and custom printed graphics.
- Optional extension brackets available.
- Optional IR or RF remote control, or integrate into your current control system.

WARRANTY

draperinc.com/warranty.aspx

SUPPORTING DOCUMENTS

All instructions, technical drawings and other supporting documents are located at: draperinc.com/documents.aspx

SIZES

Case dimensions:

6 3/4" H x 6 3/4" D (17.1 cm x 17.1 cm) including endcaps with universal mounting brackets.

Background sizes available:

Maximum image width up 16' (488 cm) wide, depending on surface selection.

For more information on this product visit: draperinc.com/videoconferencing/