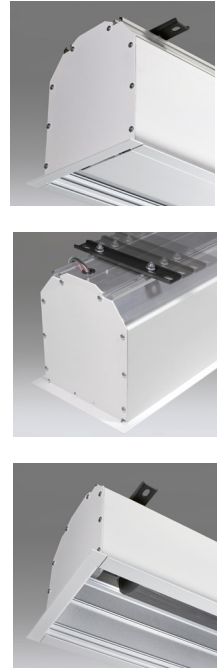


ELECTRIC Ultimate Access XL V

CEILING-RECESSED, TAB-TENSIONED



■ Ideal for major venues, conference centers, ballrooms, or university classrooms, the Ultimate Access XL V accommodates larger screen sizes. Retracted, the projection screen completely conceals behind a smooth, lower panel in the ceiling. During use, a second motor opens the lower panel upward into the case to allow the screen to descend into the room. Case installation during the initial phase of construction, eliminates job site damage, allowing for installation of the screen at a later time.

RF welded tabs eliminate stickiness and tab separation. Tabs warranted against separation for five years. Tab-tensioned screens provide a perfectly flat viewing surface with better image quality.

FEATURES

- Image area fully framed with black. Standard 12" black drop at top of viewing area.
- Adjustable or removable hoisting brackets included for easy lifting during installation.
- Sliding brackets on top of case allow unlimited adjustment for mounting.
- Sliding brackets inside case accommodate different size screens.
- Fully automatic ceiling closure panel provides complete screen concealment. Can be finished by contractor to match ceiling.
- Independently motorized ceiling closure opens into the case.
- Quick-connect wiring allows for early installation of the case with the addition of the screen later.



- Junction box and 110V three-position wall switch included for recessed wall mounting.
- **WARRANTY:** One year against defects in materials and workmanship.

OPTIONS

- **Control options:** Low voltage, video interface or other controls can be built into housing for below ceiling access.
- **Viewing Surfaces:** TecVision® and OptiFlex™ (tensioned) families.

SUPPORTING DOCUMENTS

All instructions, technical drawings and other supporting documents are located at: draperinc.com/Documents.aspx

SIZES

- **Case dimensions** 14- $\frac{1}{16}$ " high x 10- $\frac{3}{8}$ " deep (36 cm x 26 cm) includes trim flange. Built-in controls may increase case length. Mounting brackets may add to case dimensions.
- **Maximum image width** 22' (671 cm) wide, depending on surface selection.
- **16:10 FORMAT:** from 189" (480 cm) to 307" (780 cm) diagonal.
- **16:9 HDTV FORMAT:** 184" (467 cm) to 300" (762 cm) diagonal.
- **4:3 NTSC/PAL FORMAT:** 200" (508 cm) to 330" (838 cm) diagonal.
- **AV FORMAT:** from 10' 6" x 14' (320 cm x 427 cm) to 16' 6" x 22' (503 cm x 671 cm).
- Custom sizes available.

For more information on this product visit: draperinc.com/projectionscreens/electricscreens.aspx