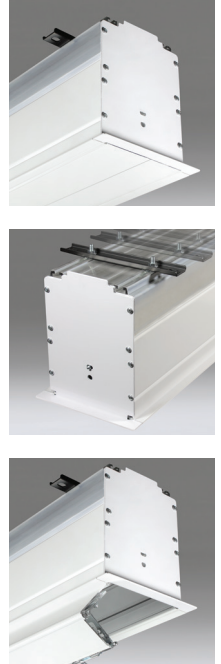


ELECTRIC Ultimate Access V

TAB-TENSIONED, CEILING-RECESSED



Product(s): Ultimate Access V, UT Southwestern Medical Center Dallas, TX
Photography by: Matt Oberer of MattO Photo, Albuquerque, NM

Complete concealment and smooth clean design makes the Ultimate Access V ideal for boardrooms, mid-sized training rooms, universities, or home theaters. During use, a second motor opens the lower panel upward into the case to allow the screen to descend into the room. Retracted, the projection screen completely conceals behind a smooth, lower panel in the ceiling with no exposed screw heads or fasteners. Installation of the case during the initial phase of construction eliminates job site damage allowing for installation of the screen at a later time.

THIS SCREEN IS TAB-TENSIONED
RF welded tabs eliminate stickiness and tab separation. Tabs warranted against separation for five years. Tab-tensioned screens provide a perfectly flat viewing surface with better image quality.

FEATURES

- Image area fully framed with black. Standard 12" (30 cm) black drop at top of viewing area.
- Adjustable or removable hoisting brackets included for easy lifting during installation.
- Sliding brackets on top of the case allow for adjustments for mounting.
- Sliding brackets inside case accommodate different size screens.
- Bottom closure panel detachable or hangs in place with "T" bracket to provide accessibility for service or maintenance.
- Fully automatic ceiling closure panel provides complete screen concealment. Can be finished by contractor to match ceiling.
- Independently motorized ceiling closure opens into the case.



- Quick-connect wiring allows for early installation of the case with the addition of the screen later.
- Includes a 110V three-position switch (standard). Quiet, low voltage motors and 220V options are available. Low voltage, video interface or other controls can be built into housing for below ceiling access.
- White case standard, black available upon request.
- WARRANTY: One year against defects in materials and workmanship.

OPTIONS

- Viewing Surfaces:** TecVision®, OptiFlex™ (tensioned), CineFlex™ (rear projection) families.

SUPPORTING DOCUMENTS

All instructions, technical drawings and other supporting documents are located at: draperinc.com/Documents.aspx

SIZES

- Case dimensions** 9-7/8" high x 8" deep (25 cm x 20 cm), including trim flange. Built-in controls may increase case length. Mounting brackets may add to case dimensions.
- Maximum image width** up to 12' (366 cm) wide, depending on surface.
- 16:10 FORMAT: from 94" to 165" (238 to 419 cm) dia.
- 16:9 FORMAT: from 92" to 161" (234 to 408 cm) dia.
- 4:3 NTSC/PAL Format: from 6' to 15' (183 to 457 cm) dia.
- AV Format: from 50" x 50" to 12' x 12' (127 x 127 to 366 x 366 cm) dia.
- Custom sizes available.

For more information on this product visit: draperinc.com/projectionscreens/electricscreens.aspx