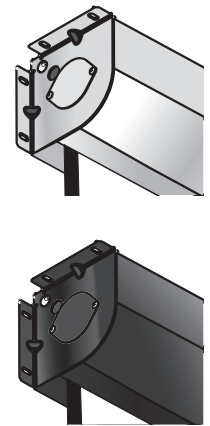


ELECTRIC Targa XL

FREE-HANGING, CEILING- OR WALL-MOUNTED



- Targa XL electric projection screen is a popular choice for auditoriums, conference and lecture halls, hospitals, hotels, boardrooms, and churches. Housed in an attractive white, scratch-resistant steel case. Matching endcaps form universal mounting brackets, making installation of the Targa XL easy. The motor is mounted inside the roller providing a clean, low-profile appearance.

THIS SCREEN IS FREE-HANGING
Free-hanging, fiberglass-backed projection screen maintains flatness thanks to the weight of the screen and bottom dowel.

FEATURES

- Housed in fabricated extruded aluminum with a curved front and L-shaped back/top cover with a scratch-resistant white polyester finish (standard), black available upon request.
- NTSC, HDTV, and 16:10 formats have image area framed with black on all four sides. Black side borders are available upon request for AV.
- Black drop standard, depending on screen size. Extra drop above image area available upon request.
- Includes one 110-120V, 3-position switch (standard).
- WARRANTY: One year against defects in materials and workmanship.



OPTIONS

- **Viewing Surfaces:** OptiView™ and ClearSound™ families.
- Other control options are available.
- Optional Plug & Play with built-in low-voltage controller (LP) or with built-in quiet, low-voltage controller (QLP).

SUPPORTING DOCUMENTS

All instructions, technical drawings and other supporting documents are located at: draperinc.com/Documents.aspx

SIZES

- **Case dimensions** 6-3/4" h x 6-3/4" d (17 cm x 17 cm) including endcaps with universal mounting brackets.
- **Maximum image width** up to 16' (488 cm) wide, depending on surface selection.
- 16:10 FORMAT: 198" and 222" (503 cm and 564 cm) dia.
- 16:9 FORMAT: 193" and 220" (490 cm and 559 cm) dia.
- 4:3 NTSC/PAL Format: 210" and 240" (533 cm and 610 cm) dia.
- AV Format: 168"x168" to 192"x192" (427 cm x 427 cm to 488 cm x 488 cm) viewing area.
- Custom sizes available.

For more information on this product visit: draperinc.com/projectionscreens/electricscreens.aspx