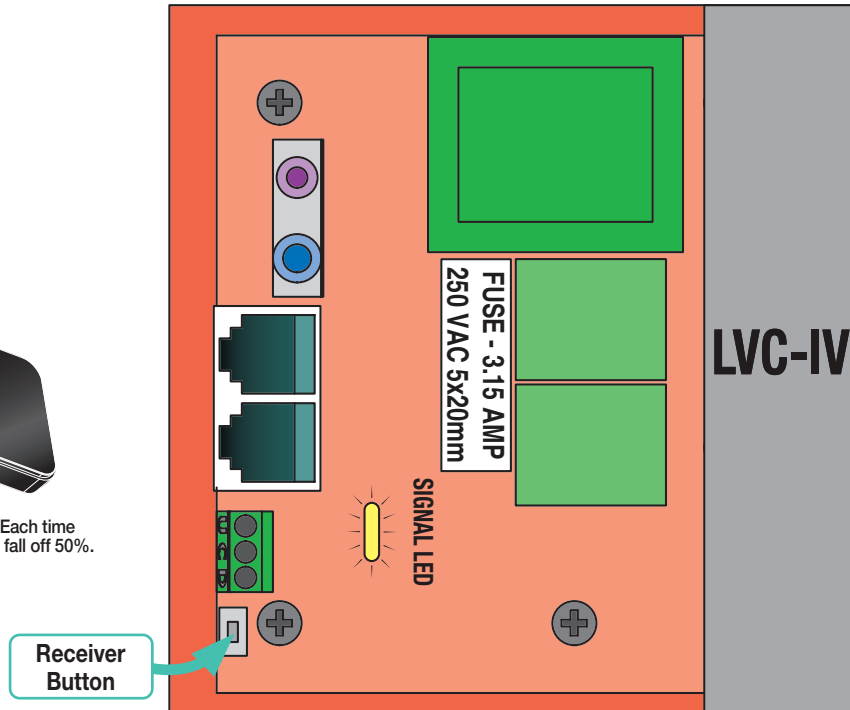
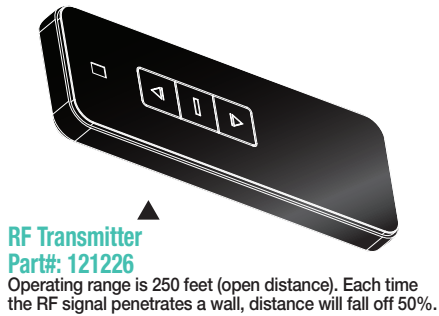


110V Radio Frequency Remote Control

For the LVC-IV Low Voltage Control Module



Section 1 - Programming Radio Frequency (RF) Remote Control

The LVC-IV comes with built-in Radio Frequency Remote control capability (optional handheld transmitter NOT included).

To "Learn" a remote

1. Press receiver button on LVC-IV (see Fig. 2A).
2. Signal light will flash slowly.
3. Press transmitter's Up button within 10 seconds (see Fig. 2B).
4. Signal light flashes three times quickly.

To "Un-Learn" a remote

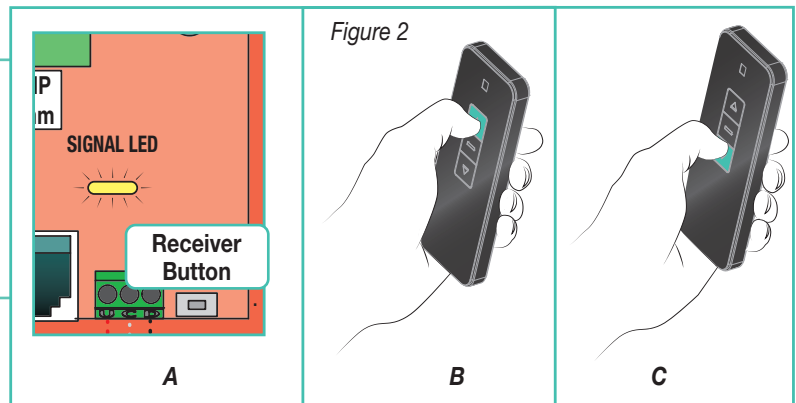
1. Press receiver button on LVC-IV (see Fig. 2A).
2. Signal light will flash slowly.
3. Press transmitter's Down button within 10 seconds (see Fig. 2C).
4. Signal light flashes three times quickly.

To "Un-Learn" all remotes

1. Press receiver button on LVC-IV until signal light flashes quickly, then release.
2. Press receiver button once while signal light is flashing.
3. Signal light will stop flashing.

Please Note: Operating range is 250ft (76 meters) open distance. RF Signal will degrade significantly with each wall it is required to penetrate.

If RF signal strength is low, thread RF antenna through one of the electrical cutouts for improved reception.



PLEASE NOTE:

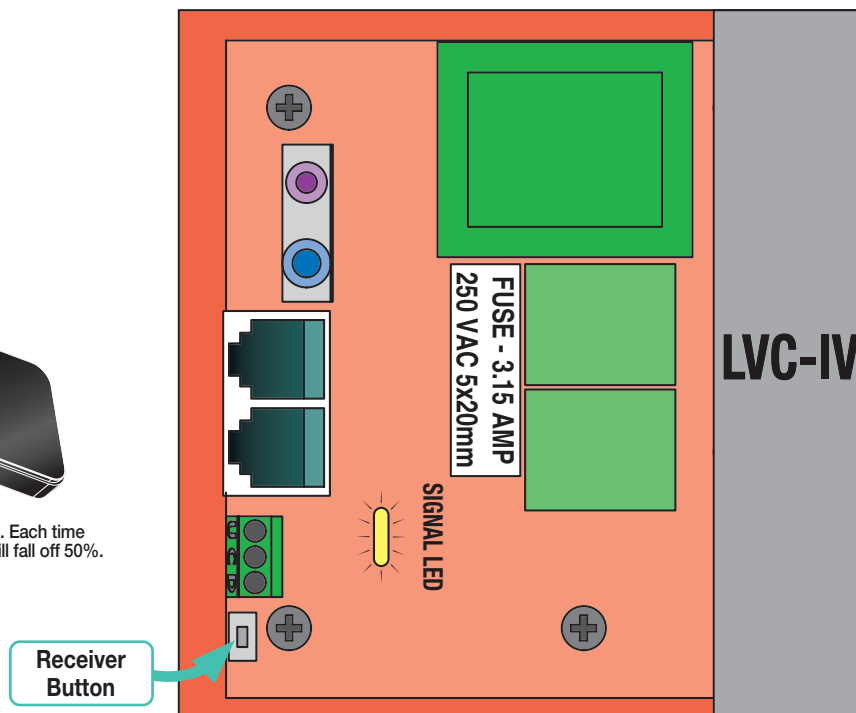
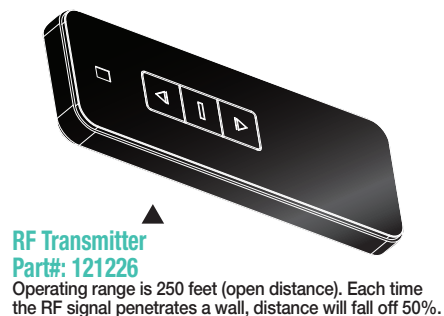
1. **RF receiver MUST NOT TOUCH METAL OBJECTS!**
Maximum Distance of Transmitter will be affected negatively.
2. **Disconnect the power supply before installing the RF receiver.**
3. **Avoid electrostatic interference:**
Static electricity will damage the electronic components.
4. **Ensure there is > 5' (1.52M) between RF receiver and ground.**
5. **Ensure there is > 1' (30.5cm) between RF receiver and ceiling.**
6. **Ensure there is > 1' (30.5cm) between RF receiver and transmitter.**
7. **Multiple receivers must be spaced > 8" (20cm) apart.**

If you encounter any difficulties installing or servicing your RF Remote, call your dealer or contact Draper, Inc.

220V Radio Frequency Remote Control

WIRING INSTRUCTIONS

For the LVC-IV Low Voltage Control Module



Section 1 - Programming Radio Frequency (RF) Remote Control

The LVC-IV comes with built-in Radio Frequency Remote control capability (optional handheld transmitter NOT included).

To "Learn" a remote

1. Press receiver button on LVC-IV (see Fig. 2A).
2. Signal light will flash slowly.
3. Press transmitter's Up button within 10 seconds (see Fig. 2B).
4. Signal light flashes three times quickly.

To "Un-Learn" a remote

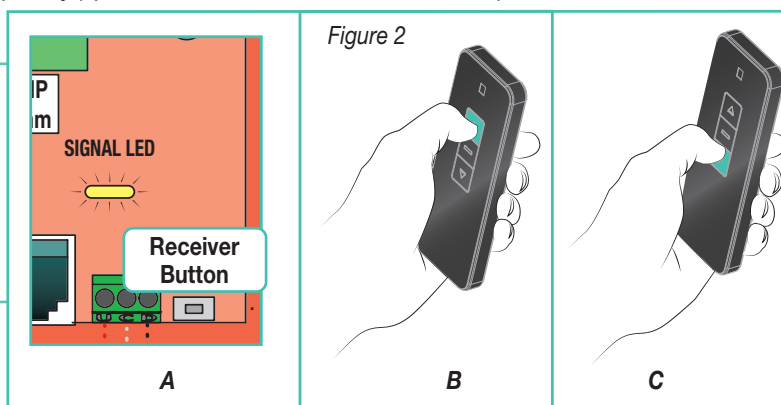
1. Press receiver button on LVC-IV (see Fig. 2A).
2. Signal light will flash slowly.
3. Press transmitter's Down button within 10 seconds (see Fig. 2C).
4. Signal light flashes three times quickly.

To "Un-Learn" all remotes

1. Press receiver button on LVC-IV until signal light flashes quickly, then release.
2. Press receiver button once while signal light is flashing.
3. Signal light will stop flashing.

Please Note: Operating range is 250ft (76 meters) open distance. RF Signal will degrade significantly with each wall it is required to penetrate.

If RF signal strength is low, thread RF antenna through one of the electrical cutouts for improved reception.



PLEASE NOTE:

1. **RF receiver MUST NOT TOUCH METAL OBJECTS!**
Maximum Distance of Transmitter will be affected negatively.
2. **Disconnect the power supply before installing the RF receiver.**
3. **Avoid electrostatic interference:**
Static electricity will damage the electronic components.
4. **Ensure there is > 5' (1.52M) between RF receiver and ground.**
5. **Ensure there is > 1' (30.5cm) between RF receiver and ceiling.**
6. **Ensure there is > 1' (30.5cm) between RF receiver and transmitter.**
7. **Multiple receivers must be spaced > 8" (20cm) apart.**

If you encounter any difficulties installing or servicing your RF Remote, call your dealer or contact Draper, Inc.