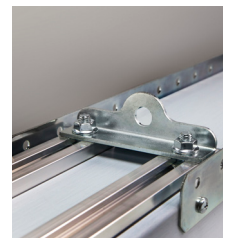
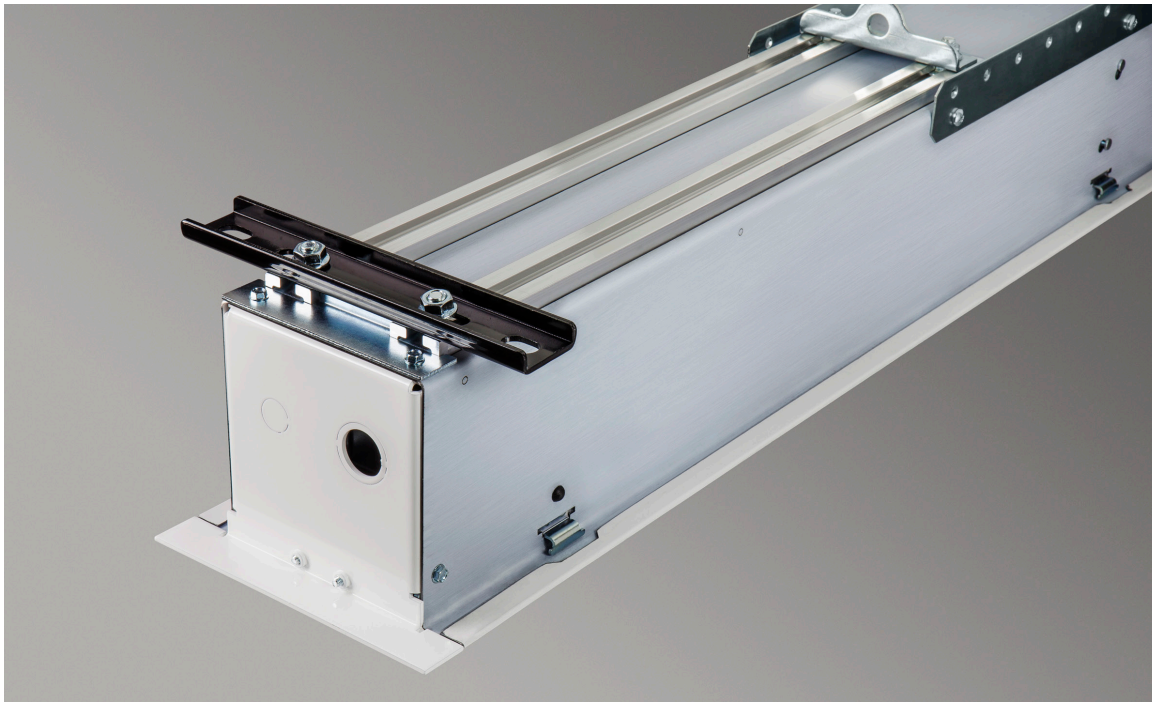


CASE

ACCESS FIT

ACCESS CASE CONCEPT: INSTALL CASE NOW, SCREEN LATER

AUTORETURN AVAILABLE



- We've made several improvements to meet your needs and make the Access Fit even easier to install. First, we have repackaged as many sizes as possible into a compact housing, less than 6" (15.24 cm) tall. Access FIT utilizes the same rugged components as larger Access screens, with a smaller footprint. It is engineered to fit into tight openings above the ceiling—places where you thought the screen would have to be exposed.

Case installation during construction keeps screen safe until construction tasks finished, then install screen with easy preset latching brackets.

FEATURES

- A Draper® innovation, the essence of the Access concept is a ceiling recessed headbox designed to be installed during construction of the facility (excluding XL models).
- You can install the case during the “dirty” phase of the construction process and keep the screen safe until you install the projector.
- The screen (motor-in-roller and attached viewing surface) is installed with latching brackets.
- Redesigned bottom closure panel with new hinge system allows the closure panel to hang in place when opened, or it can be easily removed.
- Adjustable or removable hoisting brackets are now included to allow for easy lifting during installation.
- White case standard, black available upon request.

WARRANTY

draperinc.com/warranty.aspx

SUPPORTING DOCUMENTS

All instructions, technical drawings and other supporting documents are located at: draperinc.com/documents.aspx

SIZES

Tab-tensioned screens:

Case dimensions 6 7/16" wide x 5 11/16" high (16 cm x 14 cm) including trim flange.

- **Maximum image width** up to 104" (264 cm) wide, depending on surface selection.

Free-hanging screens:

Case dimensions 6 7/16" wide x 5 11/16" high (16 cm x 14 cm) including trim flange. Extra drop may increase case size.

- **Maximum image width** up to 120" (305 cm) wide, depending on surface selection.

For more information on this product visit: draperinc.com/projectionscreens/electricscreens.aspx