

# Phantom—Tabletop

## Specifications—Phantom—Tabletop

Phantom video projector lifts for installation below a tabletop. Select from (□ Model A/□ Model B). Electrically operated by a precision linear 24V DC linear actuator, power supply included. The projector is mounted into a framework recessed below the tabletop. When activated, a trapdoor raises the projector into the room. Factory set limit switches automatically stop travel at open and closed positions. Custom closure panel to be provided by others. Universal Projector Mounting Plate suits most projectors. Suitable for projectors up to 26 lbs. Tilt, Yaw and Pan adjustments available. Projector sits flush with ceiling (up to 10° downward tilt depending on projector). Maximum projector width is 13" for Model A, 16<sup>7</sup>/<sub>8</sub>" for Model B.

### Please Mark Appropriate Selections Select Phantom Model

- Model A  
 Model B

#### Control Options:

**Please Note: This Draper motorized mount comes with one DC Motor Control and 3-Button Up-Stop-Down Switch.**

- \_\_\_ Total number of wall switches (switches operate independently)  
 Optional Radio Frequency Remote Control\* How many? \_\_\_\_\_  
 Optional Infrared Remote Control\* How many? \_\_\_\_\_  
 Optional LS-100 for Network Communication\*

**\* Please Note: The standard double pole, double throw switch provided with the ceiling-mounted version of the Phantom will not work with the Phantom Tabletop unit. You must use the three-button up-stop-down switch.**

Specifications	Model A	Model B
Overall Size (w x l x h)	17 <sup>3</sup> / <sub>8</sub> " x 25 <sup>9</sup> / <sub>16</sub> " x 14 <sup>1</sup> / <sub>4</sub> "	21 <sup>5</sup> / <sub>16</sub> " x 32 <sup>3</sup> / <sub>4</sub> " x 17 <sup>3</sup> / <sub>4</sub> "
Min. Rough Opening Size (w x l)	15 <sup>7</sup> / <sub>8</sub> " x 15 <sup>7</sup> / <sub>8</sub> " *	19 <sup>13</sup> / <sub>16</sub> " x 19 <sup>13</sup> / <sub>16</sub> " *
Net Weight of Unit	18 lbs.	27 lbs.
Lifting Capacity	26 lbs.	26 lbs.
Maximum Projector Width	13"	16 <sup>7</sup> / <sub>8</sub> "

\* A **minimum** <sup>3</sup>/<sub>16</sub>" reveal or gap should be left surrounding the closure panel (provided by others).

### A Note on Closure Panels

The Phantom comes with pieces of Velcro® pre-attached for installing a custom closure panel (provided by others).

Please note the following when installing a closure panel (provided by others):

- Use the Velcro system for attaching the closure panel to the Phantom. This provides a safety back-up in case fingers or other objects are caught between the closure and the tabletop when the closure closes: The Velcro will separate, leaving the closure panel loose and preventing pinching or injury.

**⚠ Caution: If you permanently attach the closure panel to the Phantom using screws or other means, there is a danger of pinching, injuries to fingers and damage to other objects.**

- The **total weight** of the projector, bracket and closure cannot exceed 26 lbs (11.8 kg).
- Leave enough space between the edge of the closure and the surrounding tabletop to allow the closure edge to clear the table during opening and closing of the closure.

#### Making your own closure panel to match surround cabinet or furniture:

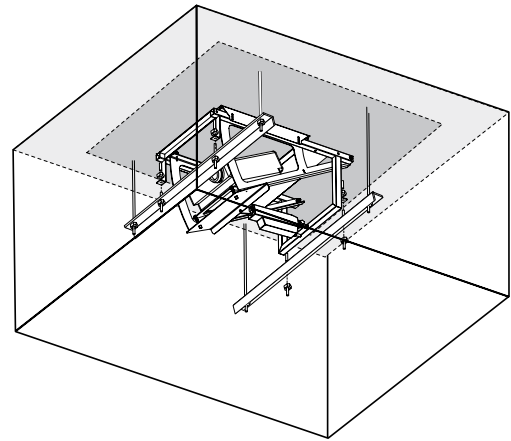
- Phantom A — ½" thick x 15<sup>11</sup>/<sub>16</sub>" x 15<sup>11</sup>/<sub>16</sub>"  
 Phantom B — ½" thick x 19<sup>5</sup>/<sub>8</sub>" x 19<sup>5</sup>/<sub>8</sub>"

Custom panel should be same size. The weight of the panel needs to be factored in for the total weight. See ② above. Velcro must also be used to attach custom closure to the Phantom (see ① above).

VELCRO® is a registered trademark of Velcro Industries B. V.

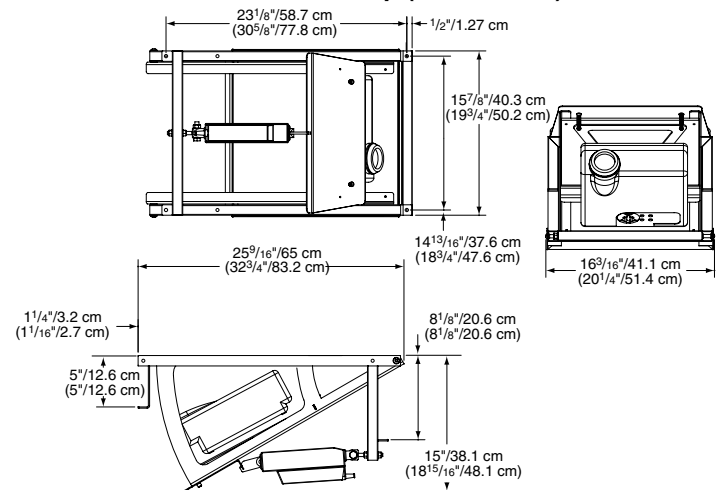
Video Projector Mount  
raises into Room

by **DRAPER**



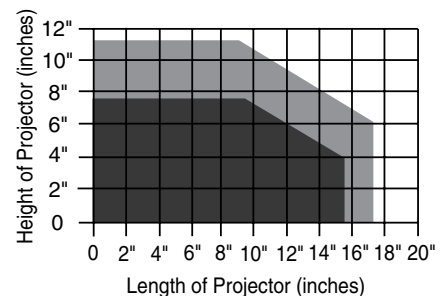
Phantom—Tabletop (View from Below)

### Phantom—Tabletop (Dimensions)



\* Room for cable inputs must be considered along with projector width or length.

Find the point on the grid where the projector length and projector height **intersect**. If intersection point falls within shaded areas then it is compatible with that size Phantom. In addition, ensure projector is within width guidelines listed in the chart at left.



- A projector will fit into the Phantom Model A if its dimensions are in the darkest area. Maximum projector width=13"
- A projector will fit into the Phantom Model B if its dimensions are in the lightest shaded area. Maximum projector width=16<sup>7</sup>/<sub>8</sub>"

PROJECT: \_\_\_\_\_  
 \_\_\_\_\_  
 ARCHITECT: \_\_\_\_\_  
 CONTRACTOR: \_\_\_\_\_  
 SUPPLIER: \_\_\_\_\_  
 DATE: \_\_\_\_\_ REVISED: \_\_\_\_\_

**DRAPER**

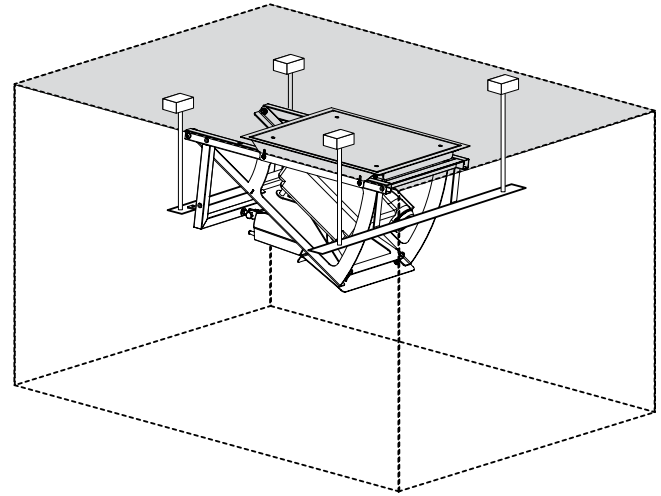
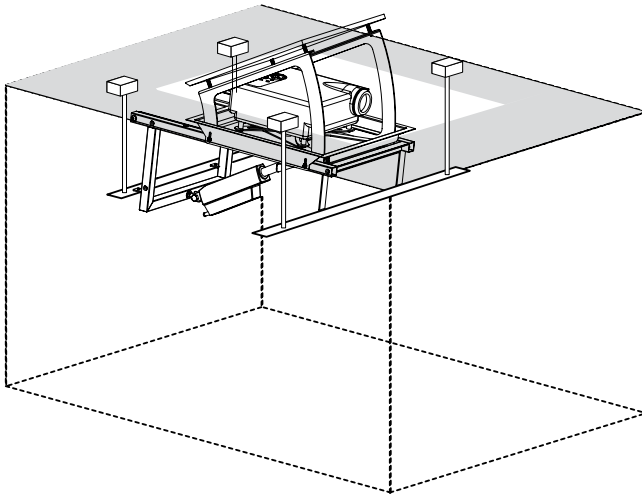
411 S. Pearl St., Spiceland, IN 47385 USA ■ 765-987-7999  
 www.draperinc.com ■ fax 765-987-7142

Copyright © 2014 Draper Inc. Form Phantom\_Sub14 Printed in U.S.A.

## Phantom—Tabletop Operation

Open

Closed



(Views from top)

## Wiring Diagram

