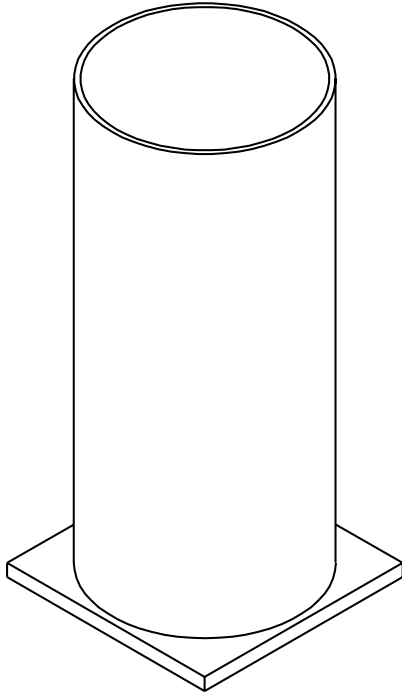


# Floor Sleeves

# DRAPER



### Specifications—501006

3½" I.D. Floor Sleeve (For use with Elite, Power, Combination, Steel Volleyball Systems and Power Tennis System)

\_\_\_\_\_ Floor Sleeves, #501006 by Draper, Inc. Floor sleeve shall be constructed of steel mechanical tubing with an inside diameter of 3½", welded to a 4" x 4" bottom plate. Sleeve shall be 8½" deep with overall length of 8¾".

### Specifications—501008

2¾" I.D. Floor Sleeve (For use with Badminton Game System and Combination Game Standard)

\_\_\_\_\_ Floor Sleeves, #501008 by Draper, Inc. Floor sleeve shall be constructed of steel mechanical tubing with an inside diameter of 2¾", welded to a 3" x 3" bottom plate. Sleeve shall be 8½" deep with overall length of 8¾".

### Specifications—501009

3" I.D. Floor Sleeve

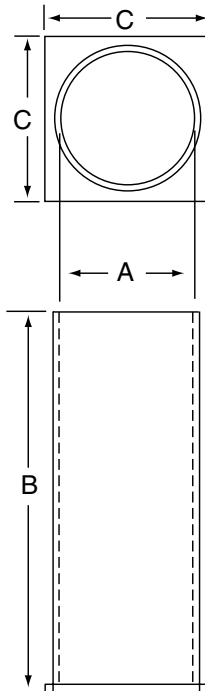
\_\_\_\_\_ Floor Sleeves, #501009 by Draper, Inc.. Floor sleeve shall be constructed of steel mechanical tubing with an inside diameter of 3", welded to a 4" x 4" bottom plate. Sleeve shall be 8½" deep with overall length of 8¾".

### Specifications—501010

4" I.D. Floor Sleeve

\_\_\_\_\_ Floor Sleeves, #501010 by Draper, Inc.. Floor sleeve shall be constructed of steel mechanical tubing with an inside diameter of 4", welded to a 6" x 6" bottom plate. Sleeve shall be 12½" deep with overall length of 12¾".

Model	A	B	C
501006	3½"	8¾"	4"
501008	2¾"	8¾"	3"
501009	3"	8¾"	4"
501010	4"	12¾"	6"



### LEED® Submittal Information

Credit	Measure	
MRc4 – Recycled Content	Post Consumer Average 25%	Post Industrial 0%
MRc5 – Regional Materials	Product Manufactured in Spiceland, IN 47385	

### Please Mark Appropriate Selections

- 501006—3½" I.D.  
Quantity: \_\_\_\_\_
- 501008—2¾" I.D.  
Quantity: \_\_\_\_\_
- 501009—3" I.D.  
Quantity: \_\_\_\_\_
- 501010—4" I.D.  
Quantity: \_\_\_\_\_

PROJECT: \_\_\_\_\_

ARCHITECT: \_\_\_\_\_

CONTRACTOR: \_\_\_\_\_

SUPPLIER: \_\_\_\_\_

DATE: \_\_\_\_\_ REVISED: \_\_\_\_\_

# DRAPER

411 S. Pearl St., Spiceland, IN 47385 USA ■ 765-987-7999  
www.draperinc.com ■ fax 765-987-7142