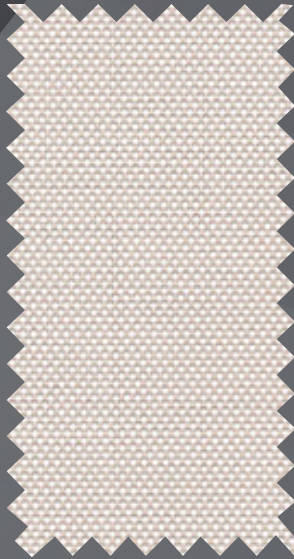


SheerWeave® Style SW2500 / 2400 / 2900 / 2600
 (2410) (2390) (2360)



Style SW2500
(1% open)



SW2520
P13 Oyster / Beige

Style SW2400 (2410)
(3% open)



SW2420
P13 Oyster / Beige

Style SW2900 (2390)
(5% open)



SW2920
P13 Oyster / Beige

Style SW2600 (2360)
(10% open)



SW2620
P13 Oyster / Beige

The above styles are also available in the colors shown below.



P84 Brite White



P12 Oyster



P14 Oyster / Pearl Gray



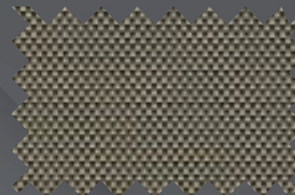
Q20 Beige



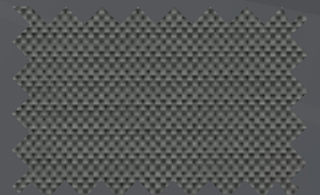
Q21 Beige / Pearl Gray



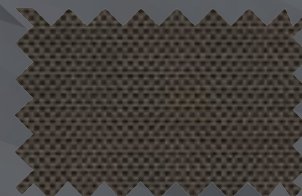
V20 Pearl Gray



V32 Charcoal / Alpaca



V22 Charcoal / Gray



V24 Charcoal / Chestnut



V21 Charcoal

Digital sample of actual colors may vary slightly.



SheerWeave® Style SW2500 / 2400 / 2900 / 2600

(2410) (2390) (2360)

SheerWeave® Styles 2500, 2400 (2410), 2900 (2390) and 2600 (2360) are lightweight, vinyl-coated fiberglass fabrics, with full basketweave to provide the broadest range of performance in a non-directional fabric. These styles can also be used in exterior roller shades.

SHEERWEAVE STYLE SW2500 / 2400 / 2900 / 2600

STANDARD WIDTH	2500, 2400 (2410), 2900 (2390) and 2600 (2360): 63", 98" and 126" (160 cm, 248.9 cm and 320 cm).	FABRIC THICKNESS	2500: 0.024 in (0.61 mm) 2400 (2410): 0.020 in (0.51 mm)	2900 (2390): 0.017 in (0.43 mm) 2600 (2360): 0.019 in (0.48 mm)	
ROLL LENGTH	30 Linear Yards (27.4 lm)	OPENNESS FACTOR	2500: Approximately 1% 2400 (2410): Approximately 3%	2900 (2390): Approximately 5% 2600 (2360): Approximately 10%	
COMPOSITION	2500: 37% Fiberglass, 63% Vinyl on Fiberglass. 2400 (2410): 36% Fiberglass, 64% Vinyl on Fiberglass. 2900 (2390) and 2600 (2360): 35% Fiberglass, 65% Vinyl on Fiberglass.	UV BLOCKAGE	2500: Approximately 99% 2400 (2410): Approximately 97%	2900 (2390): Approximately 95% 2600 (2360): Approximately 90%	
MESH WEIGHT	2500: 16.2 oz/yd ² (549 g/m ²) 2400 (2410): 14.1 oz/yd ² (478 g/m ²)	2900 (2390): 11.8 oz/yd ² (400 g/m ²) 2600 (2360): 10.4 oz/yd ² (353 g/m ²)	ACOUSTICAL VALUE	2500: NRC 0.55 / SAA 0.54 2400 (2410): NRC 0.20 / SAA 0.21	2900 (2390): NRC 0.10 / SAA 0.12 2600 (2360): NRC 0.05 / SAA 0.06
		ACOUSTICAL PERFORMANCE	NRC (Noise Reduction Coefficient) and SAA (Sound Absorption Average) tested in accordance with ASTM C423-09a.		

SPECIFICATIONS

FIRE CLASSIFICATION	NFPA 701 TM#1 (small scale), NFPA 701 TM#2 (large scale), NFPA 101 (Class A Rating), California U.S. Title 19 (small scale), BS 5867 Part 2 Type B Performance, CAN/ULC-S 109 (large and small scale), CAN/CGSB2-4.162-M80, IBC Section 803.1.1 (Class A Rating). Fire classifications are subject to change. Please visit phifer.com for the most current information.
BACTERIA AND FUNGAL RESISTANCE	ASTM E 2180, ASTM G21, ASTM G22, AATCC30 Part 3, ASTM D 3273, GREENGUARD Mold and Bacteria Standard ASTM 6329; includes Microban antimicrobial additives.
ENVIRONMENTAL CERTIFICATION	Certified to GREENGUARD and GREENGUARD Gold standards for low chemical emissions into indoor air during product usage.
SAFE USE	ANSI/WCMA A 100.1-2007 for lead content, RoHS compliant, US Consumer Product Safety Commission Section 101, REACH compliant.
STANDARD USES	Roller shades and panel tracks.
UV PROTECTION	SheerWeave sun control fabrics are an effective way to reduce harmful UV rays. Phifer Incorporated is a proud member of the Skin Cancer Foundation's Corporate Council.
WARRANTY	10-year interior, 5-year exterior.

TECHNICAL DATA

		SOLAR OPTICAL PROPERTIES																SHGC/G VALUE g-tot (glass & blind)							
		TS%				RS%				AS%				TV%				Single 1/4 CL				Insulating 1HA			
OPENNESS %	NUMBER	1%	3%	5%	10%	1%	3%	5%	10%	1%	3%	5%	10%	1%	3%	5%	10%	1%	3%	5%	10%	1%	3%	5%	10%
COLOR	NUMBER																								
Brite White	P84	16	19	22	29	72	70	67	61	12	11	11	10	14	17	20	27	0.25	0.27	0.30	0.34	0.20	0.21	0.22	0.24
Oyster	P12	16	19	24	28	72	70	66	62	12	11	10	10	15	17	22	27	0.25	0.27	0.31	0.34	0.20	0.21	0.23	0.24
Oyster / Beige	P13	13	16	22	26	65	61	58	58	22	23	20	16	11	13	19	24	0.29	0.32	0.34	0.36	0.22	0.23	0.24	0.25
Oyster / Pearl Gray	P14	8	11	17	23	56	49	49	48	36	40	34	29	7	8	14	21	0.33	0.37	0.39	0.41	0.24	0.26	0.26	0.27
Beige	Q20	12	15	19	25	55	53	51	48	33	32	30	27	9	12	15	22	0.35	0.36	0.38	0.41	0.25	0.25	0.26	0.27
Beige / Pearl Gray	Q21	8	11	15	21	46	42	42	42	46	47	43	37	6	8	12	18	0.38	0.41	0.42	0.43	0.27	0.28	0.28	0.29
Pearl Gray	V20	6	8	11	19	35	34	35	32	59	58	54	49	4	6	9	17	0.44	0.45	0.45	0.48	0.29	0.30	0.30	0.31
Charcoal	V21	2	3	6	12	4	4	4	4	94	93	90	84	2	3	6	12	0.60	0.60	0.61	0.62	0.37	0.37	0.37	0.38
Charcoal / Gray	V22	2	4	6	12	9	10	9	8	89	86	85	80	2	4	6	12	0.58	0.58	0.58	0.60	0.36	0.36	0.36	0.37
Charcoal / Chestnut	V24	2	4	6	11	6	7	6	6	92	89	88	83	2	4	6	11	0.59	0.59	0.60	0.61	0.37	0.36	0.37	0.37
Charcoal / Alpaca	V32	2	5	7	13	16	20	18	14	82	75	75	73	2	5	7	12	0.53	0.52	0.54	0.57	0.34	0.33	0.34	0.35



PRODUCT CERTIFIED FOR LOW CHEMICAL EMISSIONS
UL.COM/GG
UL 2818



*TS - Solar Transmittance, RS - Solar Reflectance, AS - Solar Absorbance, TV - Visual Transmittance *SHGC = Solar Heat Gain Coefficient *1/4 CL = 1/4" Clear Glass, 1 HA = 1" Heat Absorbing Glass *Fabrics Installed Internally, Zero-Degree Profile Angle *Solar Heat Gain Coefficient (SHGC) shown calculated according to Office of Building Technology, State and Community Programs, Energy Efficiency and Renewable Energy, U.S. Department of Energy's definition of SHGC. SHGC represents the percentage of solar heat gain that is transmitted to the interior through the glass and shading system. If you are using glass whose performance is listed in terms of SC, you may convert to SHGC by multiplying the SC by 0.87.



411 S. Pearl Street | Spiceland, IN 47385
765.987.7999 | 800.238.7999

draperinc.com

For additional information, questions, or to request fabric samples, please contact your Draper sales representative or scan to visit request.draperinc.com



© SheerWeave is a registered trademark of PHIFER INCORPORATED.
© MICROBAN is a registered trademark of Microban Products Company.
TM UL, the UL logos and the UL mark are trademarks of UL LLC.
© PHIFER INCORPORATED 0923